

Converting Colors

Android(4289684575)

Have a look what the booklet for
Android(4289684575) contains.

Android(4289684575)	3
<i>Conversions</i>	4
<i>Details</i>	6
<i>Harmonies</i>	11
<i>Previews</i>	23
<i>Color Blindness Simulation</i>	26
<i>CSS Examples</i>	29

Color

Android(4289684575)

Conversions

Conversions Part 1

Format	Color
Hex	AF645F
RGB	175, 100, 95
RGB Percent	69%, 39%, 37%
CMY	0.3137, 0.6078, 0.6275
CMYK	0.00, 0.43, 0.46, 0.31
HSL	4°, 33%, 53%
HSV	4°, 46%, 69%
XYZ	24.3019, 19.0545, 13.2235
YIQ	121.8550, 46.3050, 14.3450

Conversions

Conversions Part 2

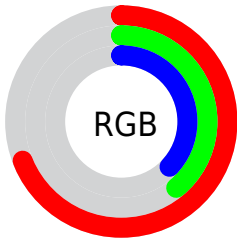
Format	Color
R_YB	175, 100, 95
Decimal	11494495
CIE Lab	50.75, 29.63, 16.04
CIE LCh	51, 33.695, 28.435
Yxy	19.0545, 0.4295, 0.3368
Android (android.graphics.Color)	4289684575 (0xFFAF645F)
YUV	121.8550, -13.2395, 46.6082
Hunter-Lab	43.6515, 22.9855, 12.5951

Details

The Android color `4289684575` is a dark color, and the websafe version is hex `CC6666`. A complement of this color would be `4284459695`, and the grayscale version is `4286216826`.

A 20% lighter version of the original color is `4293499025`, and `4286001969` is the 20% darker color. If you saturate the color by 10%, you get `4289680462`, and if you desaturate by 10%, it is `4289688689`.

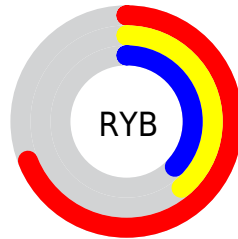
Distribution



Red (69%)

Green (39%)

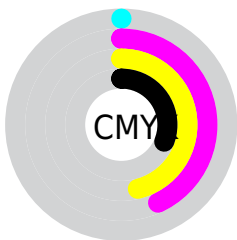
Blue (37%)



Red (69%)

Yellow (39%)

Blue (37%)

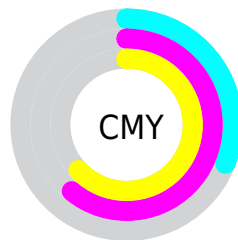


Cyan (0%)

Magenta (43%)

Yellow (46%)

Black (31%)



Cyan (31%)

Magenta (61%)

Yellow (63%)

Brightness & Saturation Gradients

These gradients show how the Android color 4289684575 changes by changing the brightness by 10 percent. The first figure shows a shift by +10% for each color and the second figure -10%.

Similar to the brightness gradients but the following saturation gradients show a change of the Android color 4289684575 by changing the saturation by 10% instead.



4289684575



4289684575

4294967295



4287843143



4293499025



4286001969



4294947756



4284226332



4294954951



4282515970



4294962147



4281073665



4278190080



4289684575



4289684575



4289680462



4289688689



4289676092



4289693058

 4289671978

 4289697172

 4289667609

 4289701541

 4289663495

 4289705655

 4289661696

 4289709768

 4289714138

 4289718251

 4289722621

Harmonies

Analogous

The Analogous color harmony consists of three colors that are next to each other on the color wheel.



4289553019



4289684575



4288900169

Triad

The Triadic color harmony groups three colors that are evenly spaced from another and form a triangle on the color wheel.



4289684575



4283204954



4282940594

Complementary

The Complementary color scheme is a pair of colors which are on the opposite of each other on the color wheel.



4289684575



4284459695

Split Complementary

Split-complementary colors differ from the complementary color scheme. The scheme consists of three colors, the original color and two neighbors of the complement color.



4278224041



4289684575



4279928950

Square

The Square scheme is like the rectangle color scheme, but the four colors are evenly spaced on the color wheel.



4289684575



4285497157



4278224787



4286149291

Rectangle

The Rectangle color scheme consists of four colors that form a rectangle on the color wheel.



4289684575



4287984448



4278224787



4281565105

Sweetspot

The Sweet Spot groups the original color and five complimentary colors.



4289684575



4293117379



4289683371



4285751391



4294111986



4285756275

Same Dimension

The Same Dimension uses a secret algorithm to generate beautiful new colors.



4289684575



4293095014



4289694559



4283912014



4288022784



4279697664

Inverse Universe

The Inverse Universe completely reimagines the original color for something new.



4284459695



4284931043



4284449711



4283323991



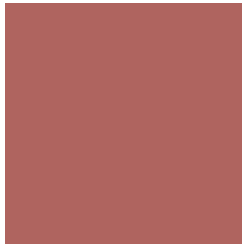
4278226326



4278195735

Previews

White Background



This preview shows how the Android color 4289684575 looks on a white background.

Color Contrast Check

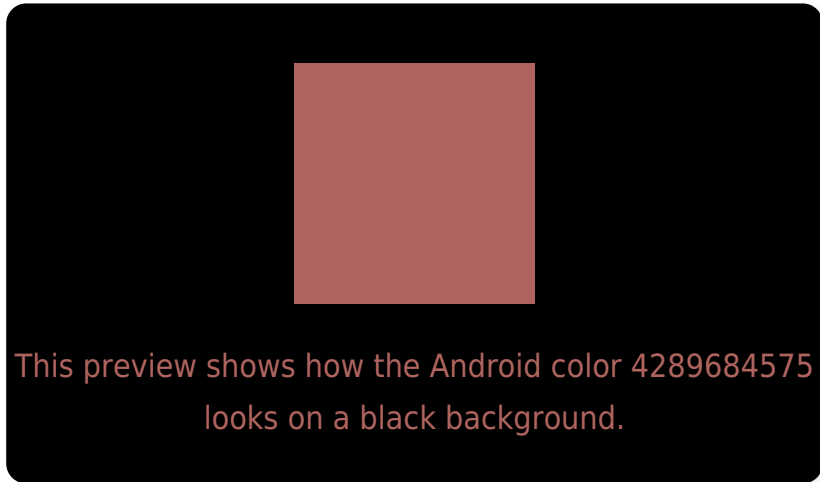
Large Text (above 18pt) WCAG AA ✓ Pass

Any Text WCAG AA ✗ Fail

Large Text (above 18pt) WCAG AAA ✗ Fail

Any Text WCAG AAA ✗ Fail

Black Background



Color Contrast Check

Large Text (above 18pt) WCAG AA ✓ Pass

Any Text WCAG AA ✓ Pass

Large Text (above 18pt) WCAG AAA ✓ Pass

Any Text WCAG AAA × Fail

If you want to check with other color combinations, try the [Color Contrast Checker](#).

Android 4289684575 Background



This preview shows how black text looks on a background with the Android color 4289684575.

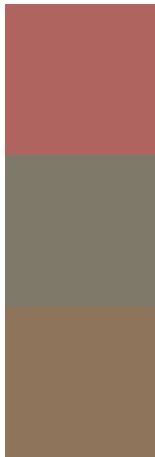


This preview shows how white text looks on a background with the Android color 4289684575.

Color Blindness Simulation

Color vision deficiency is a very complex topic, and I could not describe the different causes any better than Wikipedia does, so if you want to learn more, you should check out their [article about color blindness](#).


Dichromacy



Original Color
4289684575

Protanopia
4286544233

Deuteranopia
4287591516



Tritanopia
4289749610

Trichromacy



Original Color
4289684575

Protanomaly
4287656293

Deuteranomaly
4288376413

Tritanomaly
4289749862

Monochromacy



Original Color
4289684575

Achromatopsia
4286216826

Achromatomaly
4287459952

CSS Examples

Text

The CSS property to change the color of the text to Android 4289684575 is called "color". The color property can be set on classes, ids or directly on the HTML element.

This example shows how text in the color `rgb(175, 100, 95)` looks like.

```
.text, #text, p{  
  color:rgb(175, 100, 95)  
}
```

If you want to add a text shadow in that color use the text-shadow property, you can generate a text shadow directly with our [CSS Text Shadow Generator](#).

Here you see how black text with a 4 pixel rgb(175, 100, 95) colored shadow looks like.

```
.shadow{ text-shadow: 4px 4px 2px rgb(175, 100, 95) }
```

Border

The CSS property to change the border of an element to Android 4289684575 is called "border". The border property can be set on classes, ids or directly on the HTML element.

This example shows the color as border, it can be applied via the CSS property "border" or "border-color".

```
.border, #border, table{ border:4px solid rgb(175, 100, 95) }
```

If only the border color should be changed use the property `border-color`.

```
.border{ border-color:rgb(175, 100, 95) }
```

If you want to add a box shadow in that color use:

Here you see how a box with a 4 pixel `rgb(175, 100, 95)` colored shadow looks like.

```
.boxshadow{ -moz-box-shadow:4px 4px 4px  
4px rgb(175, 100, 95); -webkit-box-  
shadow:4px 4px 4px 4px rgb(175, 100, 95);  
box-shadow:4px 4px 4px 4px rgb(175, 100,  
95) }
```

Background

The CSS property to change the background color of an element to Android 4289684575 is called "background". The background property can be set on classes, ids or directly on the HTML element.

```
.background, #background, body{  
background: rgb(175, 100, 95) }
```

If only the background color should be changed can be used:

```
.background{ background-color: rgb(175,  
100, 95) }
```

This example shows the color as background, it is applied via the CSS property "background".

To optimize and compress your CSS code, you can use our [online CSS compressor and optimizer](#) based on csstidy. If you want to create a linear or radial gradient as background or border, check our [CSS Gradient Generator](#).

Hey! You found this booklet interesting? Support Converting Colors with the new Membership Option!

The pro membership hides all ads, plus gives you double the colors in the color bucket, and more awesome pro features!

[Learn more, Memberships starting at \\$2.50/m!](#)

**Follow me
on Twitter!**

@ConvertingColor