

Converting Colors

Android(4289685610)

Have a look what the booklet for
Android(4289685610) contains.

Android(4289685610)	3
<i>Conversions</i>	4
<i>Details</i>	6
<i>Harmonies</i>	11
<i>Previews</i>	23
<i>Color Blindness Simulation</i>	26
<i>CSS Examples</i>	29

Color

Android(4289685610)

Conversions

Conversions Part 1

Format	Color
Hex	AF686A
RGB	175, 104, 106
RGB Percent	69%, 41%, 42%
CMY	0.3137, 0.5922, 0.5843
CMYK	0.00, 0.41, 0.39, 0.31
HSL	358°, 31%, 55%
HSV	358°, 41%, 69%
XYZ	25.2310, 20.0552, 16.1769
YIQ	125.4570, 41.6740, 15.6740

Conversions

Conversions Part 2

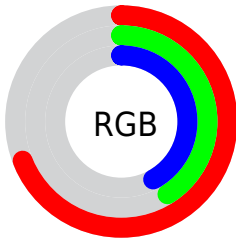
Format	Color
R_{YB}	175, 104, 106
Decimal	11495530
CIE _{Lab}	51.90, 28.67, 11.14
CIE _{LCh}	52, 30.761, 21.234
Yxy	20.0552, 0.4105, 0.3263
Android (android.graphics.Color)	4289685610 (0xFFAF686A)
YUV	125.4570, -9.5923, 43.4492
Hunter-Lab	44.7830, 22.1977, 9.9309

Details

The Android color **4289685610** is a dark color, and the websafe version is hex **996666**. A complement of this color would be **4285050797**, and the grayscale version is **4286479998**.

A 20% lighter version of the original color is **4293500061**, and **4286068539** is the 20% darker color. If you saturate the color by 10%, you get **4289680985**, and if you desaturate by 10%, it is **4289689979**.

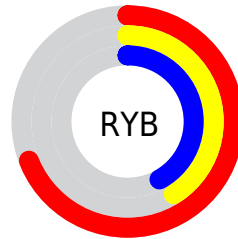
Distribution



Red (69%)

Green (41%)

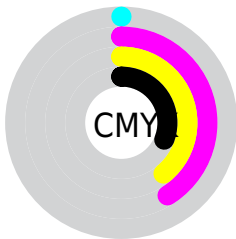
Blue (42%)



Red (69%)

Yellow (41%)

Blue (42%)

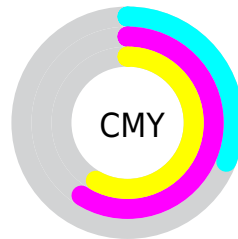


Cyan (0%)

Magenta (41%)

Yellow (39%)

Black (31%)



Cyan (31%)

Magenta (59%)

Yellow (58%)

Brightness & Saturation Gradients

These gradients show how the Android color 4289685610 changes by changing the brightness by 10 percent. The first figure shows a shift by +10% for each color and the second figure -10%.

Similar to the brightness gradients but the following saturation gradients show a change of the Android color 4289685610 by changing the saturation by 10% instead.



4289685610



4289685610

4294967295



4287844178



4293500061



4286068539



4294948792



4284293157



4294955988



4282582801



4294963440



4281139200



4278190080



4289685610



4289685610



4289680985



4289689979



4289676616



4289694604

 4289671991

 4289698973

 4289667622

 4289703598

 4289662997

 4289708223

 4289658885

 4289712592

 4289717217

 4289721586

 4289724415

Harmonies

Analogous

The Analogous color harmony consists of three colors that are next to each other on the color wheel.



4289357957



4289685610



4289162836

Triad

The Triadic color harmony groups three colors that are evenly spaced from another and form a triangle on the color wheel.



4289685610



4284253786



4282876335

Complementary

The Complementary color scheme is a pair of colors which are on the opposite of each other on the color wheel.



4289685610



4285050797

Split Complementary

Split-complementary colors differ from the complementary color scheme. The scheme consists of three colors, the original color and two neighbors of the complement color.



4279207844



4289685610



4281895283

Square

The Square scheme is like the rectangle color scheme, but the four colors are evenly spaced on the color wheel.



4289685610



4286218314



4278684302



4285757613

Rectangle

The Rectangle color scheme consists of four colors that form a rectangle on the color wheel.



4289685610



4288377930



4278684302



4281762733

Sweetspot

The Sweet Spot groups the original color and five complimentary colors.



4289685610



4293118152



4289554607



4285752163



4294111986



4285756275

Same Dimension

The Same Dimension uses a secret algorithm to generate beautiful new colors.



4289685610



4293096567



4289694056



4283911758



4288020484



4279697409

Inverse Universe

The Inverse Universe completely reimagines the original color for something new.



4289685610



4293096567



4285042351



4283911758



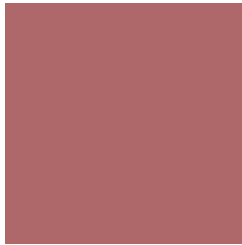
4288020484



4279697409

Previews

White Background



This preview shows how the Android color 4289685610 looks on a white background.

Color Contrast Check

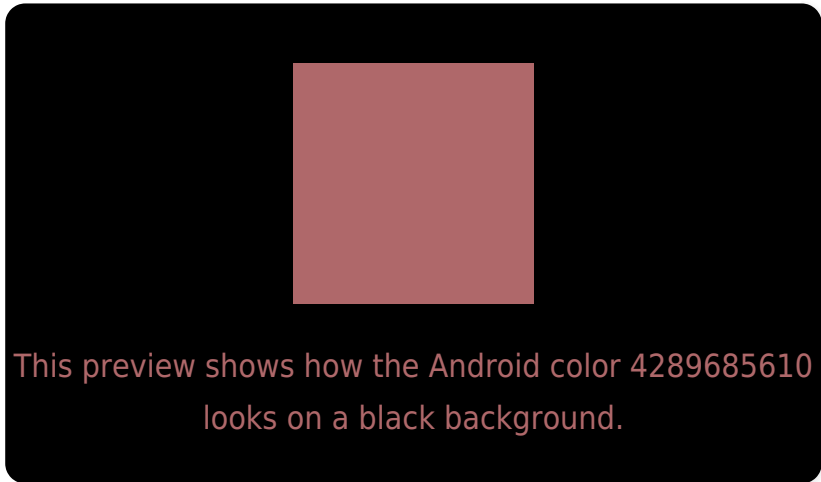
Large Text (above 18pt) WCAG AA ✓ Pass

Any Text WCAG AA ✗ Fail

Large Text (above 18pt) WCAG AAA ✗ Fail

Any Text WCAG AAA ✗ Fail

Black Background



Color Contrast Check

Large Text (above 18pt) WCAG AA ✓ Pass

Any Text WCAG AA ✓ Pass

Large Text (above 18pt) WCAG AAA ✓ Pass

Any Text WCAG AAA × Fail

If you want to check with other color combinations, try the [Color Contrast Checker](#).

Android 4289685610 Background



This preview shows how black text looks on a background with the Android color 4289685610.



This preview shows how white text looks on a background with the Android color 4289685610.

Color Blindness Simulation

Color vision deficiency is a very complex topic, and I could not describe the different causes any better than Wikipedia does, so if you want to learn more, you should check out their [article about color blindness](#).

Dichromacy



Trichromacy



Original Color
4289685610

Protanomaly
4287722864

Deuteranomaly
4288377448

Tritanomaly
4289685357

Monochromacy



Original Color
4289685610

Achromatopsia
4286414205

Achromatomaly
4287591798

CSS Examples

Text

The CSS property to change the color of the text to Android 4289685610 is called "color". The color property can be set on classes, ids or directly on the HTML element.

This example shows how text in the color `rgb(175, 104, 106)` looks like.

```
.text, #text, p{  
    color:rgb(175, 104, 106)  
}
```

If you want to add a text shadow in that color use the text-shadow property, you can generate a text shadow directly with our [CSS Text Shadow Generator](#).

Here you see how black text with a 4 pixel rgb(175, 104, 106) colored shadow looks like.

```
.shadow{ text-shadow: 4px 4px 2px rgb(175, 104, 106) }
```

Border

The CSS property to change the border of an element to Android 4289685610 is called "border". The border property can be set on classes, ids or directly on the HTML element.

This example shows the color as border, it can be applied via the CSS property "border" or "border-color".

```
.border, #border, table{ border:4px solid rgb(175, 104, 106) }
```

If only the border color should be changed use the property `border-color`.

```
.border{ border-color:rgb(175, 104, 106) }
```

If you want to add a box shadow in that color use:

Here you see how a box with a 4 pixel `rgb(175, 104, 106)` colored shadow looks like.

```
.boxshadow{ -moz-box-shadow:4px 4px 4px  
4px rgb(175, 104, 106); -webkit-box-  
shadow:4px 4px 4px 4px rgb(175, 104, 106);  
box-shadow:4px 4px 4px 4px rgb(175, 104,  
106) }
```

Background

The CSS property to change the background color of an element to Android 4289685610 is called "background". The background property can be set on classes, ids or directly on the HTML element.

```
.background, #background, body{  
background: rgb(175, 104, 106) }
```

If only the background color should be changed can be used:

```
.background{ background-color: rgb(175,  
104, 106) }
```

This example shows the color as background, it is applied via the CSS property "background".

To optimize and compress your CSS code, you can use our [online CSS compressor and optimizer](#) based on csstidy. If you want to create a linear or radial gradient as background or border, check our [CSS Gradient Generator](#).

Hey! You found this booklet interesting? Support Converting Colors with the new Membership Option!

The pro membership hides all ads, plus gives you double the colors in the color bucket, and more awesome pro features!

[Learn more, Memberships starting at \\$2.50/m!](#)

**Follow me
on Twitter!**

@ConvertingColor