

Converting Colors

Android(4289696635)

Have a look what the booklet for
Android(4289696635) contains.

Android(4289696635)	3
<i>Conversions</i>	4
<i>Details</i>	6
<i>Harmonies</i>	11
<i>Previews</i>	23
<i>Color Blindness Simulation</i>	26
<i>CSS Examples</i>	29

Color

Android(4289696635)

Conversions

Conversions Part 1

Format	Color
Hex	AF937B
RGB	175, 147, 123
RGB Percent	69%, 58%, 48%
CMY	0.3137, 0.4235, 0.5176
CMYK	0.00, 0.16, 0.30, 0.31
HSL	28°, 25%, 58%
HSV	28°, 30%, 69%
XYZ	31.6881, 31.4115, 23.1318
YIQ	152.6360, 24.3920, -1.5280

Conversions

Conversions Part 2

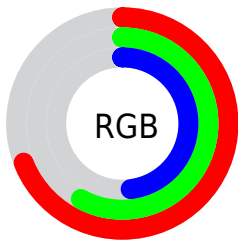
Format	Color
RYB	175, 168, 123
Decimal	11506555
CIELab	62.85, 6.82, 16.62
CIELCh	63, 17.960, 67.696
Yxy	31.4115, 0.3675, 0.3643
Android (android.graphics.Color)	4289696635 (0xFFAF937B)
YUV	152.6360, -14.6105, 19.6132
Hunter-Lab	56.0459, 2.8426, 14.7615

Details

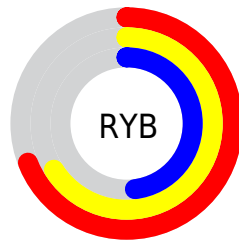
The Android color `4289696635` is a dark color, and the websafe version is hex `CC9999`. A complement of this color would be `4286289839`, and the grayscale version is `4288256409`.

A 20% lighter version of the original color is `4293380528`, and `4286210122` is the 20% darker color. If you saturate the color by 10%, you get `4289694314`, and if you desaturate by 10%, it is `4289698956`.

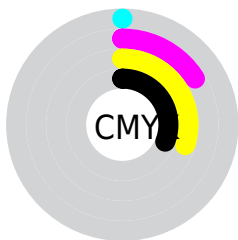
Distribution



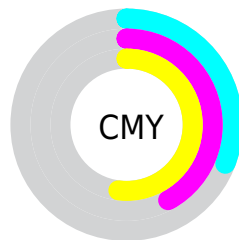
- Red (69%)
- Green (58%)
- Blue (48%)



- Red (69%)
- Yellow (66%)
- Blue (48%)



- Cyan (0%)
- Magenta (16%)
- Yellow (30%)
- Black (31%)



- Cyan (31%)
- Magenta (42%)
- Yellow (52%)

Brightness & Saturation Gradients

These gradients show how the Android color 4289696635 changes by changing the brightness by 10 percent. The first figure shows a shift by +10% for each color and the second figure -10%.

Similar to the brightness gradients but the following saturation gradients show a change of the Android color 4289696635 by changing the saturation by 10% instead.



4289696635



4289696635

4294967295



4287920482



4293380528



4286210122



4294960587



4284500275



4294967271



4282921502



4281343238



4279895296



4278190080



4289696635



4289696635



4289694314



4289698956

 4289691736

 4289701534

 4289689414

 4289703856

 4289686837

 4289706433

 4289684515

 4289708755

 4289681938

 4289711332

 4289679616

 4289713654

 4289715967

 4289718527

Harmonies

Analogous

The Analogous color harmony consists of three colors that are next to each other on the color wheel.



4290285445



4289696635



4288714873

Triad

The Triadic color harmony groups three colors that are evenly spaced from another and form a triangle on the color wheel.



4289696635



4285571484



4288713649

Complementary

The Complementary color scheme is a pair of colors which are on the opposite of each other on the color wheel.



4289696635



4286289839

Split Complementary

Split-complementary colors differ from the complementary color scheme. The scheme consists of three colors, the original color and two neighbors of the complement color.



4287338679



4289696635



4285374635

Square

The Square scheme is like the rectangle color scheme, but the four colors are evenly spaced on the color wheel.



4289696635



4286423179



4286094773



4289760933

Rectangle

The Rectangle color scheme consists of four colors that form a rectangle on the color wheel.



4289696635



4287929468



4286094773



4288255156

Sweetspot

The Sweet Spot groups the original color and five complimentary colors.



4289696635



4293122255



4289690520



4285754470



4294111986



4285756275

Same Dimension

The Same Dimension uses a secret algorithm to generate beautiful new colors.



4289696635



4293113745



4289703035



4283912782



4288038144



4279700224

Inverse Universe

The Inverse Universe completely reimagines the original color for something new.



4286289839



4287741411



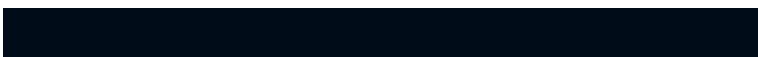
4286283439



4283323223



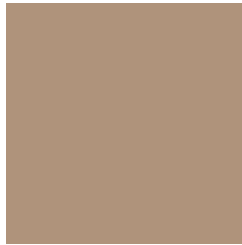
4278210966



4278193175

Previews

White Background



This preview shows how the Android color 4289696635 looks on a white background.

Color Contrast Check

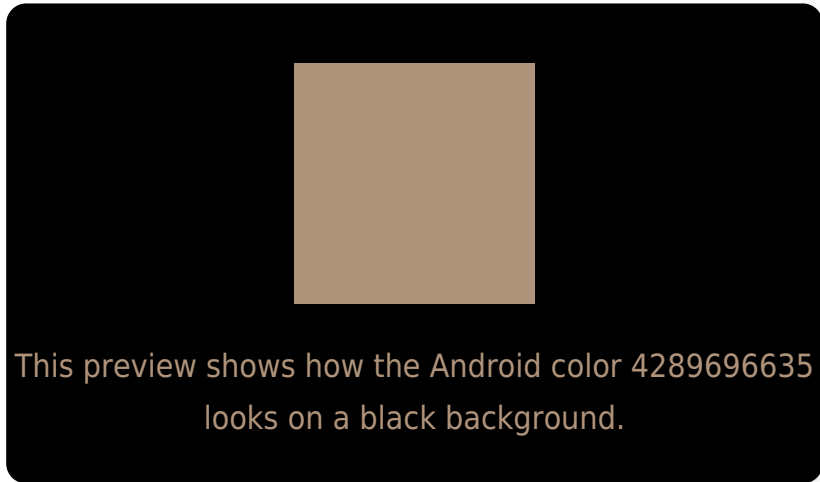
Large Text (above 18pt) WCAG AA × Fail

Any Text WCAG AA × Fail

Large Text (above 18pt) WCAG AAA × Fail

Any Text WCAG AAA × Fail

Black Background



Color Contrast Check

Large Text (above 18pt) WCAG AA ✓ Pass

Any Text WCAG AA ✓ Pass

Large Text (above 18pt) WCAG AAA ✓ Pass

Any Text WCAG AAA ✓ Pass

If you want to check with other color combinations, try the [Color Contrast Checker](#).

Android 4289696635 Background



This preview shows how black text looks on a background with the Android color 4289696635.



This preview shows how white text looks on a background with the Android color 4289696635.

Color Blindness Simulation

Color vision deficiency is a very complex topic, and I could not describe the different causes any better than Wikipedia does, so if you want to learn more, you should check out their [article about color blindness](#).


Dichromacy



Original Color
4289696635

Protanopia
4288780413

Deuteranopia
4289827451



Tritanopia
4289892250

Trichromacy



Original Color
4289696635

Protanomaly
4289107580

Deuteranomaly
4289761915

Tritanomaly
4289826959

Monochromacy



Original Color
4289696635

Achromatopsia
4288256409

Achromatomaly
4288780174

CSS Examples

Text

The CSS property to change the color of the text to Android 4289696635 is called "color". The color property can be set on classes, ids or directly on the HTML element.

This example shows how text in the color `rgb(175, 147, 123)` looks like.

```
.text, #text, p{  
    color:rgb(175, 147, 123)  
}
```

If you want to add a text shadow in that color use the text-shadow property, you can generate a text shadow directly with our [CSS Text Shadow Generator](#).

Here you see how black text with a 4 pixel rgb(175, 147, 123) colored shadow looks like.

```
.shadow{ text-shadow: 4px 4px 2px rgb(175, 147, 123) }
```

Border

The CSS property to change the border of an element to Android 4289696635 is called "border". The border property can be set on classes, ids or directly on the HTML element.

This example shows the color as border, it can be applied via the CSS property "border" or "border-color".

```
.border, #border, table{ border:4px solid rgb(175, 147, 123) }
```

If only the border color should be changed use the property `border-color`.

```
.border{ border-color:rgb(175, 147, 123) }
```

If you want to add a box shadow in that color use:

Here you see how a box with a 4 pixel `rgb(175, 147, 123)` colored shadow looks like.

```
.boxshadow{ -moz-box-shadow:4px 4px 4px 4px rgb(175, 147, 123); -webkit-box-shadow:4px 4px 4px 4px rgb(175, 147, 123); box-shadow:4px 4px 4px 4px rgb(175, 147, 123) }
```

Background

The CSS property to change the background color of an element to Android 4289696635 is called "background". The background property can be set on classes, ids or directly on the HTML element.

```
.background, #background, body{  
background: rgb(175, 147, 123) }
```

If only the background color should be changed can be used:

```
.background{ background-color: rgb(175,  
147, 123) }
```

This example shows the color as background, it is applied via the CSS property "background".

To optimize and compress your CSS code, you can use our [online CSS compressor and optimizer](#) based on csstidy. If you want to create a linear or radial gradient as background or border, check our [CSS Gradient Generator](#).

Hey! You found this booklet interesting? Support Converting Colors with the new Membership Option!

The pro membership hides all ads, plus gives you double the colors in the color bucket, and more awesome pro features!

[Learn more, Memberships starting at \\$2.50/m!](#)

**Follow me
on Twitter!**

@ConvertingColor