

# Converting Colors

Android(4289747032)

Have a look what the booklet for  
Android(4289747032) contains.

<b>Android(4289747032)</b> .....	3
<b><i>Conversions</i></b> .....	4
<b><i>Details</i></b> .....	6
<b><i>Harmonies</i></b> .....	11
<b><i>Previews</i></b> .....	23
<b><i>Color Blindness Simulation</i></b> .....	26
<b><i>CSS Examples</i></b> .....	29

# Color

**Android(4289747032)**

# Conversions

## Conversions Part 1

<b>Format</b>	<b>Color</b>
Hex	B05858
RGB	176, 88, 88
RGB Percent	69%, 35%, 35%
CMY	0.3098, 0.6549, 0.6549
CMYK	0.00, 0.50, 0.50, 0.31
HSL	0°, 36%, 52%
HSV	0°, 50%, 69%
XYZ	23.1557, 16.9141, 11.2768
YIQ	114.3120, 52.4480, 18.6560

# Conversions

## Conversions Part 2

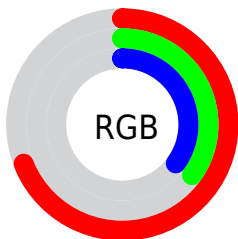
<b>Format</b>	<b>Color</b>
<b>R<sub>YB</sub></b>	176, 88, 88
Decimal	11556952
CIE Lab	48.15, 35.76, 16.68
CIE LCh	48, 39.463, 25.009
Yxy	16.9141, 0.4510, 0.3294
Android (android.graphics.Color)	4289747032 (0xFFB05858)
YUV	114.3120, -12.9718, 54.1004
Hunter-Lab	41.1268, 28.5292, 12.5316

# Details

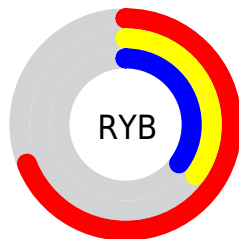
The Android color **4289747032** is a dark color, and the websafe version is hex **CC6666**. A complement of this color would be **4284002480**, and the grayscale version is **4285690482**.

A 20% lighter version of the original color is **4293627018**, and **4285998635** is the 20% darker color. If you saturate the color by 10%, you get **4289742406**, and if you desaturate by 10%, it is **4289751658**.

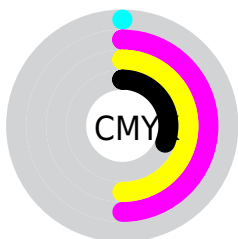
# Distribution



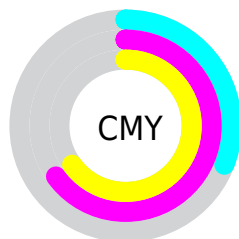
- Red (69%)
- Green (35%)
- Blue (35%)



- Red (69%)
- Yellow (35%)
- Blue (35%)



- Cyan (0%)
- Magenta (50%)
- Yellow (50%)
- Black (31%)



- Cyan (31%)
- Magenta (65%)
- Yellow (65%)

# Brightness & Saturation Gradients

These gradients show how the Android color 4289747032 changes by changing the brightness by 10 percent. The first figure shows a shift by +10% for each color and the second figure -10%.

Similar to the brightness gradients but the following saturation gradients show a change of the Android color 4289747032 by changing the saturation by 10% instead.





4289747032



4289747032

4294967295



4287840065



4293627018



4285998635



4294944676



4284221974



4294951871



4282449920



4294959067



4280877057



4294966520



4278190080



4289747032



4289747032



4289742406



4289751658



4289738037



4289756027

 4289733411

 4289760653

 4289729042

 4289765022

 4289724416

 4289769648

 4289774274

 4289778643

 4289783269

 4289787638

# Harmonies

## Analogous

The Analogous color harmony consists of three colors that are next to each other on the color wheel.



4289549945



4289747032



4288897596

# Triad

The Triadic color harmony groups three colors that are evenly spaced from another and form a triangle on the color wheel.



4289747032



4282482507



4280187060

# Complementary

The Complementary color scheme is a pair of colors which are on the opposite of each other on the color wheel.



4289747032



4284002480

# Split Complementary

Split-complementary colors differ from the complementary color scheme. The scheme consists of three colors, the original color and two neighbors of the complement color.



4278222760



4289747032



4278223723

# Square

The Square scheme is like the rectangle color scheme, but the four colors are evenly spaced on the color wheel.



4289747032



4285167923



4278223757



4285230255

# Rectangle

The Rectangle color scheme consists of four colors that form a rectangle on the color wheel.



4289747032



4287916849



4278223757



4278221746



# Sweetspot

The Sweet Spot groups the original color and five complimentary colors.



4289747032



4293313475



4289747120



4285750878



4294111986



4285756275



# Same Dimension

The Same Dimension uses a secret algorithm to generate beautiful new colors.



4289747032



4293287004



4289758296



4284043344



4288217088



4279894016



# Inverse Universe

The Inverse Universe completely reimagines the original color for something new.



4284002480



4284278502



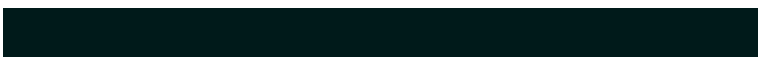
4283991216



4283455833



4278229401

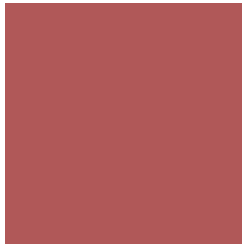


4278196762



# Previews

## White Background



This preview shows how the Android color 4289747032 looks on a white background.

## Color Contrast Check

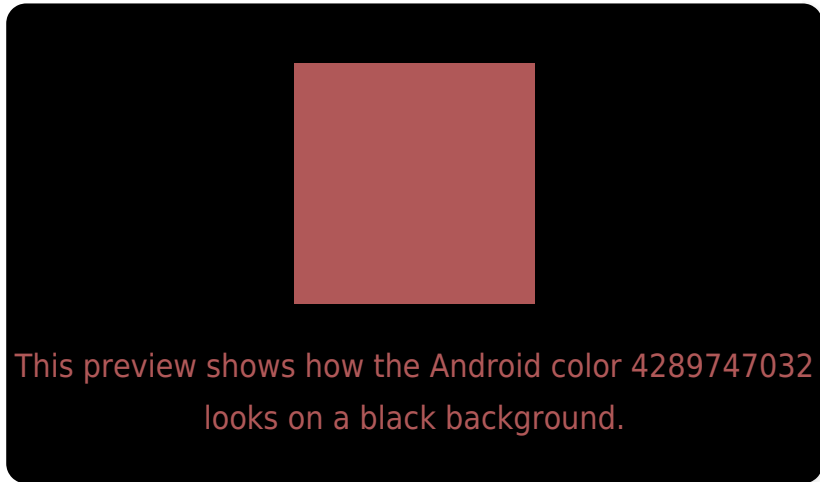
Large Text (above 18pt) WCAG AA ✓ Pass

Any Text WCAG AA ✓ Pass

Large Text (above 18pt) WCAG AAA ✓ Pass

Any Text WCAG AAA × Fail

# Black Background



## Color Contrast Check

Large Text (above 18pt) WCAG AA ✓ Pass

Any Text WCAG AA × Fail

Large Text (above 18pt) WCAG AAA × Fail

Any Text WCAG AAA × Fail

If you want to check with other color combinations, try the [Color Contrast Checker](#).



# Android 4289747032 Background



This preview shows how black text looks on a background with the Android color 4289747032.

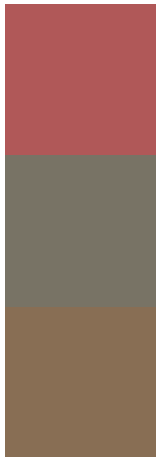


This preview shows how white text looks on a background with the Android color 4289747032.

# Color Blindness Simulation

Color vision deficiency is a very complex topic, and I could not describe the different causes any better than Wikipedia does, so if you want to learn more, you should check out their [article about color blindness](#).

## Dichromacy



**Original Color**  
4289747032

**Protanopia**  
4286083941

**Deuteranopia**  
4287131220



**Tritanopia**  
4289746781

# Trichromacy



**Original Color**

4289747032

**Protanomaly**

4287392096

**Deuteranomaly**

4288112213

**Tritanomaly**

4289746779

# Monochromacy



**Original Color**

4289747032

**Achromatopsia**

4285690482

**Achromatomaly**

4287195497

# CSS Examples

## Text

The CSS property to change the color of the text to Android 4289747032 is called "color". The color property can be set on classes, ids or directly on the HTML element.

This example shows how text in the color `rgb(176, 88, 88)` looks like.

```
.text, #text, p{  
    color:rgb(176, 88, 88)  
}
```

If you want to add a text shadow in that color use the text-shadow property, you can generate a text shadow directly with our [CSS Text Shadow Generator](#).

Here you see how black text with a 4 pixel rgb(176, 88, 88) colored shadow looks like.

```
.shadow{ text-shadow: 4px 4px 2px rgb(176, 88, 88) }
```

## Border

The CSS property to change the border of an element to Android 4289747032 is called "border". The border property can be set on classes, ids or directly on the HTML element.

This example shows the color as border, it can be applied via the CSS property "border" or "border-color".

```
.border, #border, table{ border:4px solid rgb(176, 88, 88) }
```

If only the border color should be changed use the property `border-color`.

```
.border{ border-color:rgb(176, 88, 88) }
```

If you want to add a box shadow in that color use:

Here you see how a box with a 4 pixel `rgb(176, 88, 88)` colored shadow looks like.

```
.boxshadow{ -moz-box-shadow:4px 4px 4px  
4px rgb(176, 88, 88); -webkit-box-  
shadow:4px 4px 4px 4px rgb(176, 88, 88);  
box-shadow:4px 4px 4px 4px rgb(176, 88,  
88) }
```

# Background

The CSS property to change the background color of an element to Android 4289747032 is called "background". The background property can be set on classes, ids or directly on the HTML element.

```
.background, #background, body{  
background: rgb(176, 88, 88) }
```

If only the background color should be changed can be used:

```
.background{ background-color: rgb(176, 88,  
88) }
```

This example shows the color as background, it is applied via the CSS property "background".

To optimize and compress your CSS code, you can use our [online CSS compressor and optimizer](#) based on csstidy. If you want to create a linear or radial gradient as background or border, check our [CSS Gradient Generator](#).



Hey! You found this booklet interesting? Support Converting Colors with the new Membership Option!

The pro membership hides all ads, plus gives you double the colors in the color bucket, and more awesome pro features!

**[Learn more, Memberships starting at \\$2.50/m!](#)**

**Follow me  
on Twitter!**

@ConvertingColor