

Converting Colors

Android(4289748310)

Have a look what the booklet for
Android(4289748310) contains.

Android(4289748310)	3
<i>Conversions</i>	4
<i>Details</i>	6
<i>Harmonies</i>	11
<i>Previews</i>	23
<i>Color Blindness Simulation</i>	26
<i>CSS Examples</i>	29

Color

Android(4289748310)

Conversions

Conversions Part 1

Format	Color
Hex	B05D56
RGB	176, 93, 86
RGB Percent	69%, 36%, 34%
CMY	0.3098, 0.6353, 0.6627
CMYK	0.00, 0.47, 0.51, 0.31
HSL	5°, 36%, 51%
HSV	5°, 51%, 69%
XYZ	23.4986, 17.7307, 10.9880
YIQ	117.0190, 51.7150, 15.4190

Conversions

Conversions Part 2

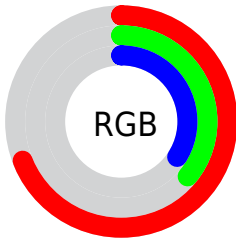
Format	Color
RYB	176, 94, 86
Decimal	11558230
CIELab	49.17, 32.92, 19.24
CIELCh	49, 38.130, 30.312
Yxy	17.7307, 0.4500, 0.3396
Android (android.graphics.Color)	4289748310 (0xFFB05D56)
YUV	117.0190, -15.2924, 51.7263
Hunter-Lab	42.1078, 25.9244, 14.0039

Details

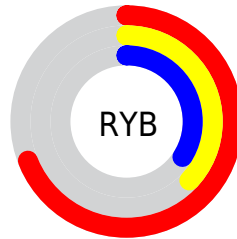
The Android color **4289748310** is a dark color, and the websafe version is hex **CC6666**. A complement of this color would be **4283869616**, and the grayscale version is **4285887861**.

A 20% lighter version of the original color is **4293628296**, and **4286000169** is the 20% darker color. If you saturate the color by 10%, you get **4289744196**, and if you desaturate by 10%, it is **4289752424**.

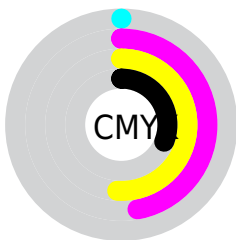
Distribution



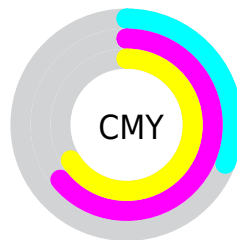
- Red (69%)
- Green (36%)
- Blue (34%)



- Red (69%)
- Yellow (37%)
- Blue (34%)



- Cyan (0%)
- Magenta (47%)
- Yellow (51%)
- Black (31%)



- Cyan (31%)
- Magenta (64%)
- Yellow (66%)

Brightness & Saturation Gradients

These gradients show how the Android color 4289748310 changes by changing the brightness by 10 percent. The first figure shows a shift by +10% for each color and the second figure -10%.

Similar to the brightness gradients but the following saturation gradients show a change of the Android color 4289748310 by changing the saturation by 10% instead.

 4289748310

 4289748310

4294967295

 4287841343

 4293628296

 4286000169

 4294945954

 4284224276

 4294953149

 4282515456

 4294960345

 4280942593

 4294967285

 4278190080

 4289748310

 4289748310

 4289744196

 4289752424

 4289740083

 4289756537

 4289735713

 4289760907

 4289731600

 4289765020

 4289728000

 4289769134

 4289773248

 4289777617

 4289781731

 4289785844

Harmonies

Analogous

The Analogous color harmony consists of three colors that are next to each other on the color wheel.



4289747574



4289748310



4288767805

Triad

The Triadic color harmony groups three colors that are evenly spaced from another and form a triangle on the color wheel.



4289748310



4282221396



4282087605

Complementary

The Complementary color scheme is a pair of colors which are on the opposite of each other on the color wheel.



4289748310



4283869616

Split Complementary

Split-complementary colors differ from the complementary color scheme. The scheme consists of three colors, the original color and two neighbors of the complement color.



4278223020



4289748310



4278224244

Square

The Square scheme is like the rectangle color scheme, but the four colors are evenly spaced on the color wheel.



4289748310



4284972347



4278224276



4286016685

Rectangle

The Rectangle color scheme consists of four colors that form a rectangle on the color wheel.



4289748310



4287721268



4278224276



4279663540

Sweetspot

The Sweet Spot groups the original color and five complimentary colors.



4289748310



4293314243



4289746602



4285751390



4294111986



4285756275

Same Dimension

The Same Dimension uses a secret algorithm to generate beautiful new colors.



4289748310



4293289050



4289759574



4284043600



4288220160



4279894528

Inverse Universe

The Inverse Universe completely reimagines the original color for something new.



4283869616



4284144614



4283858352



4283455833



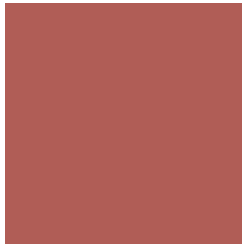
4278226329



4278196250

Previews

White Background



This preview shows how the Android color 4289748310 looks on a white background.

Color Contrast Check

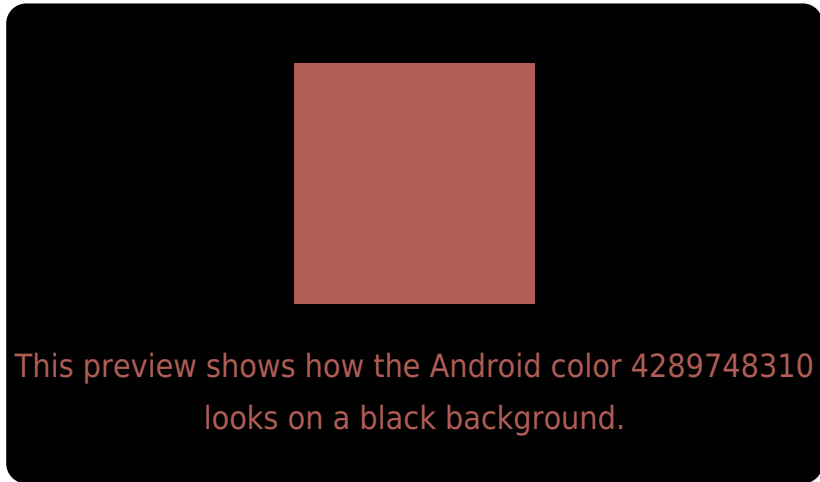
Large Text (above 18pt) WCAG AA ✓ Pass

Any Text WCAG AA ✓ Pass

Large Text (above 18pt) WCAG AAA ✓ Pass

Any Text WCAG AAA × Fail

Black Background



Color Contrast Check

Large Text (above 18pt) WCAG AA ✓ Pass

Any Text WCAG AA ✓ Pass

Large Text (above 18pt) WCAG AAA ✓ Pass

Any Text WCAG AAA × Fail

If you want to check with other color combinations, try the [Color Contrast Checker](#).

Android 4289748310 Background



This preview shows how black text looks on a background with the Android color 4289748310.



This preview shows how white text looks on a background with the Android color 4289748310.

Color Blindness Simulation

Color vision deficiency is a very complex topic, and I could not describe the different causes any better than Wikipedia does, so if you want to learn more, you should check out their [article about color blindness](#).

Dichromacy



Trichromacy



Original Color

4289748310

Protanomaly

4287589469

Deuteranomaly

4288244052

Tritanomaly

4289813598

Monochromacy



Original Color

4289748310

Achromatopsia

4285887861

Achromatomaly

4287261802

CSS Examples

Text

The CSS property to change the color of the text to Android 4289748310 is called "color". The color property can be set on classes, ids or directly on the HTML element.

This example shows how text in the color `rgb(176, 93, 86)` looks like.

```
.text, #text, p{  
    color:rgb(176, 93, 86)  
}
```

If you want to add a text shadow in that color use the text-shadow property, you can generate a text shadow directly with our [CSS Text Shadow Generator](#).

Here you see how black text with a 4 pixel rgb(176, 93, 86) colored shadow looks like.

```
.shadow{ text-shadow: 4px 4px 2px rgb(176, 93, 86) }
```

Border

The CSS property to change the border of an element to Android 4289748310 is called "border". The border property can be set on classes, ids or directly on the HTML element.

This example shows the color as border, it can be applied via the CSS property "border" or "border-color".

```
.border, #border, table{ border:4px solid rgb(176, 93, 86) }
```

If only the border color should be changed use the property `border-color`.

```
.border{ border-color:rgb(176, 93, 86) }
```

If you want to add a box shadow in that color use:

Here you see how a box with a 4 pixel `rgb(176, 93, 86)` colored shadow looks like.

```
.boxshadow{ -moz-box-shadow:4px 4px 4px  
4px rgb(176, 93, 86); -webkit-box-  
shadow:4px 4px 4px 4px rgb(176, 93, 86);  
box-shadow:4px 4px 4px 4px rgb(176, 93,  
86) }
```

Background

The CSS property to change the background color of an element to Android 4289748310 is called "background". The background property can be set on classes, ids or directly on the HTML element.

```
.background, #background, body{  
background: rgb(176, 93, 86) }
```

If only the background color should be changed can be used:

```
.background{ background-color: rgb(176, 93,  
86) }
```

This example shows the color as background, it is applied via the CSS property "background".

To optimize and compress your CSS code, you can use our [online CSS compressor and optimizer](#) based on csstidy. If you want to create a linear or radial gradient as background or border, check our [CSS Gradient Generator](#).

Hey! You found this booklet interesting? Support Converting Colors with the new Membership Option!

The pro membership hides all ads, plus gives you double the colors in the color bucket, and more awesome pro features!

[Learn more, Memberships starting at \\$2.50/m!](#)

**Follow me
on Twitter!**

@ConvertingColor