

# Converting Colors

Android(4289749854)

Have a look what the booklet for  
Android(4289749854) contains.

|  |    |
|--|----|
| <b>Android(4289749854)</b> .....               | 3  |
| <i><b>Conversions</b></i> .....                | 4  |
| <i><b>Details</b></i> .....                    | 6  |
| <i><b>Harmonies</b></i> .....                  | 11 |
| <i><b>Previews</b></i> .....                   | 23 |
| <i><b>Color Blindness Simulation</b></i> ..... | 26 |
| <i><b>CSS Examples</b></i> .....               | 29 |

# Color

**Android(4289749854)**

# Conversions

## Conversions Part 1

| Format      | Color                      |
|-------------|----------------------------|
| Hex         | B0635E                     |
| RGB         | 176, 99, 94                |
| RGB Percent | 69%, 39%, 37%              |
| CMY         | 0.3098, 0.6118, 0.6314     |
| CMYK        | 0.00, 0.44, 0.47, 0.31     |
| HSL         | 4°, 34%, 53%               |
| HSV         | 4°, 47%, 69%               |
| XYZ         | 24.3867, 18.9619, 12.9644  |
| YIQ         | 121.4530, 47.4970, 14.7690 |

# Conversions

## Conversions Part 2

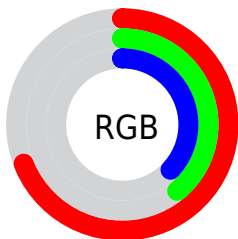
| <b>Format</b>                       | <b>Color</b>                   |
|-------------------------------------|--------------------------------|
| <b>R<sub>Y</sub>B</b>               | 176, 99, 94                    |
| Decimal                             | 11559774                       |
| CIE Lab                             | 50.64, 30.47, 16.51            |
| CIE LCh                             | 51, 34.651, 28.453             |
| Yxy                                 | 18.9619, 0.4331,<br>0.3367     |
| Android<br>(android.graphics.Color) | 4289749854<br>(0xFFB0635E)     |
| YUV                                 | 121.4530, -13.5343,<br>47.8377 |
| Hunter-Lab                          | 43.5453, 23.7612,<br>12.8298   |

# Details

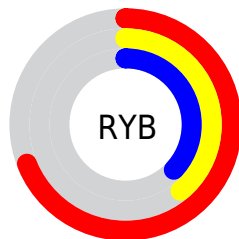
The Android color `4289749854` is a dark color, and the websafe version is hex `CC6666`. A complement of this color would be `4284394416`, and the grayscale version is `4286216826`.

A 20% lighter version of the original color is `4293564304`, and `4286067248` is the 20% darker color. If you saturate the color by 10%, you get `4289745484`, and if you desaturate by 10%, it is `4289754224`.

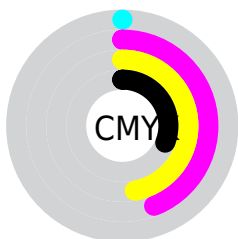
# Distribution



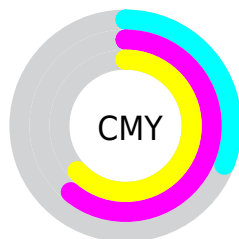
- Red (69%)
- Green (39%)
- Blue (37%)



- Red (69%)
- Yellow (39%)
- Blue (37%)



- Cyan (0%)
- Magenta (44%)
- Yellow (47%)
- Black (31%)



- Cyan (31%)
- Magenta (61%)
- Yellow (63%)

# Brightness & Saturation Gradients

These gradients show how the Android color 4289749854 changes by changing the brightness by 10 percent. The first figure shows a shift by +10% for each color and the second figure -10%.

Similar to the brightness gradients but the following saturation gradients show a change of the Android color 4289749854 by changing the saturation by 10% instead.





4289749854



4289749854

4294967295



4287908422



4293564304



4286067248



4294947499



4284291611



4294954694



4282581249



4294961890



4281073665



4278190080



4289749854



4289749854



4289745484



4289754224



4289741371



4289758337

 4289737001

 4289762707

 4289732888

 4289766820

 4289728518

 4289771190

 4289727232

 4289775304

 4289779673

 4289783787

 4289788156

# Harmonies

## Analogous

The Analogous color harmony consists of three colors that are next to each other on the color wheel.



4289618299



4289749854



4288900167

# Triad

The Triadic color harmony groups three colors that are evenly spaced from another and form a triangle on the color wheel.



4289749854



4283073881



4282743987

# Complementary

The Complementary color scheme is a pair of colors which are on the opposite of each other on the color wheel.



4289749854



4284394416

# Split Complementary

Split-complementary colors differ from the complementary color scheme. The scheme consists of three colors, the original color and two neighbors of the complement color.



4278224042



4289749854



4279273590

# Square

The Square scheme is like the rectangle color scheme, but the four colors are evenly spaced on the color wheel.



4289749854



4285431619



4278224788



4286149036

# Rectangle

The Rectangle color scheme consists of four colors that form a rectangle on the color wheel.



4289749854



4287984446



4278224788



4281237426



# Sweetspot

The Sweet Spot groups the original color and five complimentary colors.



4289749854



4293314501



4289748652



4285751391



4294111986



4285756275



# Same Dimension

The Same Dimension uses a secret algorithm to generate beautiful new colors.



4289749854



4293291365



4289760094



4284043600



4288219392



4279894528



# Inverse Universe

The Inverse Universe completely reimagines the original color for something new.



4284394416



4284866278



4284384176



4283455833



4278227097

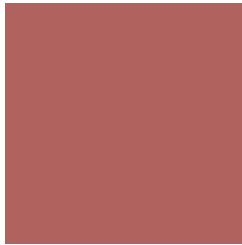


4278196250



# Previews

## White Background



This preview shows how the Android color 4289749854 looks on a white background.

## Color Contrast Check

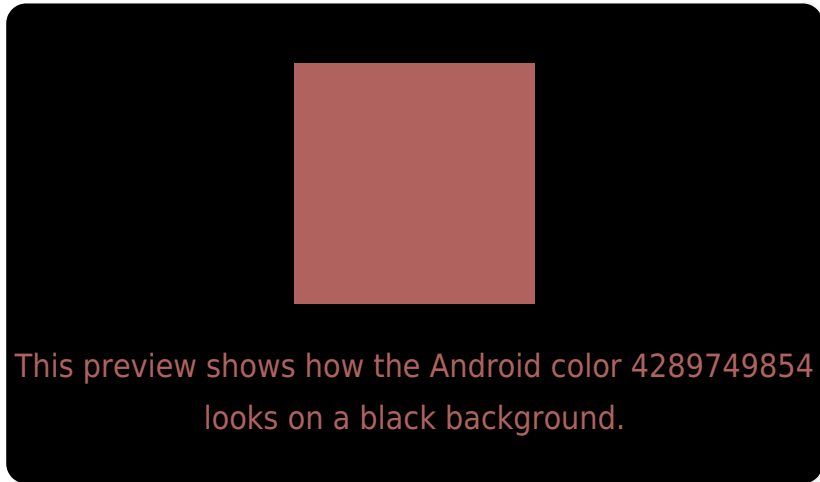
Large Text (above 18pt) WCAG AA ✓ Pass

Any Text WCAG AA ✗ Fail

Large Text (above 18pt) WCAG AAA ✗ Fail

Any Text WCAG AAA ✗ Fail

# Black Background



## Color Contrast Check

Large Text (above 18pt) WCAG AA ✓ Pass

Any Text WCAG AA ✓ Pass

Large Text (above 18pt) WCAG AAA ✓ Pass

Any Text WCAG AAA × Fail

If you want to check with other color combinations, try the [Color Contrast Checker](#).



# Android 4289749854 Background



This preview shows how black text looks on a background with the Android color 4289749854.

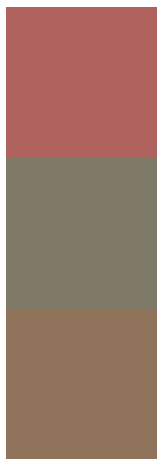


This preview shows how white text looks on a background with the Android color 4289749854.

# Color Blindness Simulation

Color vision deficiency is a very complex topic, and I could not describe the different causes any better than Wikipedia does, so if you want to learn more, you should check out their [article about color blindness](#).


## Dichromacy



**Original Color**  
4289749854

**Protanopia**  
4286544232

**Deuteranopia**  
4287591515



**Tritanopia**  
4289814889

# Trichromacy



**Original Color**  
4289749854

**Protanomaly**  
4287721828

**Deuteranomaly**  
4288376412

**Tritanomaly**  
4289815141

# Monochromacy



**Original Color**  
4289749854

**Achromatopsia**  
4286151033

**Achromatomaly**  
4287459695

# CSS Examples

## Text

The CSS property to change the color of the text to Android 4289749854 is called "color". The color property can be set on classes, ids or directly on the HTML element.

This example shows how text in the color `rgb(176, 99, 94)` looks like.

```
.text, #text, p{  
    color:rgb(176, 99, 94)  
}
```

If you want to add a text shadow in that color use the text-shadow property, you can generate a text shadow directly with our [CSS Text Shadow Generator](#).

Here you see how black text with a 4 pixel rgb(176, 99, 94) colored shadow looks like.

```
.shadow{ text-shadow: 4px 4px 2px rgb(176, 99, 94) }
```

## Border

The CSS property to change the border of an element to Android 4289749854 is called "border". The border property can be set on classes, ids or directly on the HTML element.

This example shows the color as border, it can be applied via the CSS property "border" or "border-color".

```
.border, #border, table{ border:4px solid rgb(176, 99, 94) }
```

If only the border color should be changed use the property border-color.

```
.border{ border-color:rgb(176, 99, 94) }
```

If you want to add a box shadow in that color use:

Here you see how a box with a 4 pixel rgb(176, 99, 94) colored shadow looks like.

```
.boxshadow{ -moz-box-shadow:4px 4px 4px  
4px rgb(176, 99, 94); -webkit-box-  
shadow:4px 4px 4px 4px rgb(176, 99, 94);  
box-shadow:4px 4px 4px 4px rgb(176, 99,  
94) }
```

# Background

The CSS property to change the background color of an element to Android 4289749854 is called "background". The background property can be set on classes, ids or directly on the HTML element.

```
.background, #background, body{  
background: rgb(176, 99, 94) }
```

If only the background color should be changed can be used:

```
.background{ background-color: rgb(176, 99,  
94) }
```

This example shows the color as background, it is applied via the CSS property "background".

To optimize and compress your CSS code, you can use our [online CSS compressor and optimizer](#) based on csstidy. If you want to create a linear or radial gradient as background or border, check our [CSS Gradient Generator](#).



Hey! You found this booklet interesting? Support Converting Colors with the new Membership Option!

The pro membership hides all ads, plus gives you double the colors in the color bucket, and more awesome pro features!

**[Learn more, Memberships starting at \\$2.50/m!](#)**

**Follow me  
on Twitter!**

@ConvertingColor