

Converting Colors

Android(4289755716)

Have a look what the booklet for
Android(4289755716) contains.

Android(4289755716)	3
<i>Conversions</i>	4
<i>Details</i>	6
<i>Harmonies</i>	11
<i>Previews</i>	23
<i>Color Blindness Simulation</i>	26
<i>CSS Examples</i>	29

Color

Android(4289755716)

Conversions

Conversions Part 1

Format	Color
Hex	B07A44
RGB	176, 122, 68
RGB Percent	69%, 48%, 27%
CMY	0.3098, 0.5216, 0.7333
CMYK	0.00, 0.31, 0.61, 0.31
HSL	30°, 44%, 48%
HSV	30°, 61%, 69%
XYZ	25.9074, 23.5665, 8.6522
YIQ	131.9900, 49.5180, -5.3460

Conversions

Conversions Part 2

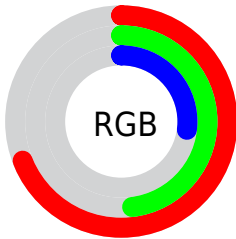
Format	Color
R_{YB}	176, 176, 68
Decimal	11565636
CIE Lab	55.65, 15.35, 37.55
CIE LCh	56, 40.568, 67.770
Yxy	23.5665, 0.4457, 0.4054
Android (android.graphics.Color)	4289755716 (0xFFB07A44)
YUV	131.9900, -31.5471, 38.5968
Hunter-Lab	48.5454, 10.3065, 23.4146

Details

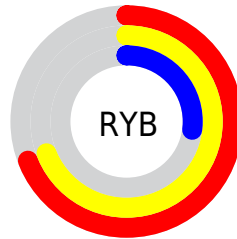
The Android color `4289755716` is a dark color, and the websafe version is hex `996633`. A complement of this color would be `4282677936`, and the grayscale version is `4286874756`.

A 20% lighter version of the original color is `4293570166`, and `4286073109` is the 20% darker color. If you saturate the color by 10%, you get `4289753394`, and if you desaturate by 10%, it is `4289758038`.

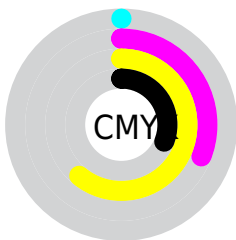
Distribution



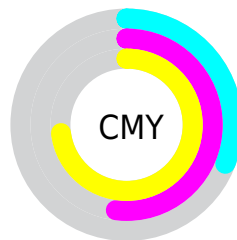
- Red (69%)
- Green (48%)
- Blue (27%)



- Red (69%)
- Yellow (69%)
- Blue (27%)



- Cyan (0%)
- Magenta (31%)
- Yellow (61%)
- Black (31%)



- Cyan (31%)
- Magenta (52%)
- Yellow (73%)

Brightness & Saturation Gradients

These gradients show how the Android color 4289755716 changes by changing the brightness by 10 percent. The first figure shows a shift by +10% for each color and the second figure -10%.

Similar to the brightness gradients but the following saturation gradients show a change of the Android color 4289755716 by changing the saturation by 10% instead.



4289755716



4289755716

4294967295



4287914284



4293570166



4286073109



4294953616



4284297984



4294960811



4282522880



4294967238



4280879104



4294967266



4278190080



4289755716



4289755716



4289753394



4289758038



4289751073



4289760359

■ 4289749007

■ 4289762425

■ 4289746944

■ 4289764746

■ 4289767068

■ 4289769390

■ 4289771711

■ 4289773777

■ 4289776098

Harmonies

Analogous

The Analogous color harmony consists of three colors that are next to each other on the color wheel.



4290997852



4289755716



4287792701

Triad

The Triadic color harmony groups three colors that are evenly spaced from another and form a triangle on the color wheel.



4289755716



4278228878



4287920573

Complementary

The Complementary color scheme is a pair of colors which are on the opposite of each other on the color wheel.



4289755716



4282677936

Split Complementary

Split-complementary colors differ from the complementary color scheme. The scheme consists of three colors, the original color and two neighbors of the complement color.



4284188363



4289755716



4278228655

Square

The Square scheme is like the rectangle color scheme, but the four colors are evenly spaced on the color wheel.



4289755716



4282094953



4278227142



4290276513

Rectangle

The Rectangle color scheme consists of four colors that form a rectangle on the color wheel.



4289755716



4286156101



4278227142



4286873028

Sweetspot

The Sweet Spot groups the original color and five complimentary colors.



4289755716



4293317052



4289741946



4285752922



4294111986



4285756275

Same Dimension

The Same Dimension uses a secret algorithm to generate beautiful new colors.



4289755716



4293300540



4289769540



4284044624



4288236800



4279897344

Inverse Universe

The Inverse Universe completely reimagines the original color for something new.



4282677936



4282159590



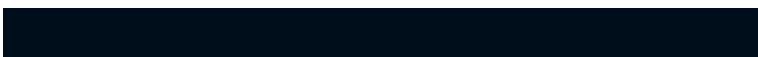
4282664112



4283454809



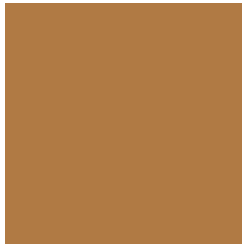
4278209945



4278193434

Previews

White Background



This preview shows how the Android color 4289755716 looks on a white background.

Color Contrast Check

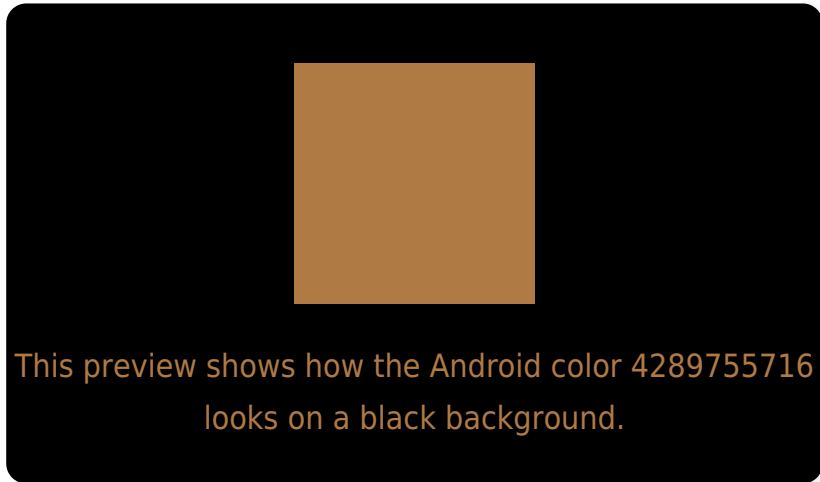
Large Text (above 18pt) WCAG AA ✓ Pass

Any Text WCAG AA ✗ Fail

Large Text (above 18pt) WCAG AAA ✗ Fail

Any Text WCAG AAA ✗ Fail

Black Background



Color Contrast Check

Large Text (above 18pt) WCAG AA ✓ Pass

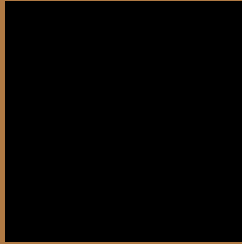
Any Text WCAG AA ✓ Pass

Large Text (above 18pt) WCAG AAA ✓ Pass

Any Text WCAG AAA × Fail

If you want to check with other color combinations, try the [Color Contrast Checker](#).

Android 4289755716 Background



This preview shows how black text looks on a background with the Android color 4289755716.



This preview shows how white text looks on a background with the Android color 4289755716.

Color Blindness Simulation

Color vision deficiency is a very complex topic, and I could not describe the different causes any better than Wikipedia does, so if you want to learn more, you should check out their [article about color blindness](#).

Dichromacy



Original Color
4289755716

Protanopia
4287858248

Deuteranopia
4288970563

Trichromacy



Original Color
4289755716

Protanomaly
4288578119

Deuteranomaly
4289232195

Tritanomaly
4289951336

Monochromacy



Original Color
4289755716

Achromatopsia
4286874756

Achromatomaly
4287922285

CSS Examples

Text

The CSS property to change the color of the text to Android 4289755716 is called "color". The color property can be set on classes, ids or directly on the HTML element.

This example shows how text in the color `rgb(176, 122, 68)` looks like.

```
.text, #text, p{  
    color:rgb(176, 122, 68)  
}
```

If you want to add a text shadow in that color use the text-shadow property, you can generate a text shadow directly with our [CSS Text Shadow Generator](#).

Here you see how black text with a 4 pixel rgb(176, 122, 68) colored shadow looks like.

```
.shadow{ text-shadow: 4px 4px 2px rgb(176, 122, 68) }
```

Border

The CSS property to change the border of an element to Android 4289755716 is called "border". The border property can be set on classes, ids or directly on the HTML element.

This example shows the color as border, it can be applied via the CSS property "border" or "border-color".

```
.border, #border, table{ border:4px solid rgb(176, 122, 68) }
```

If only the border color should be changed use the property `border-color`.

```
.border{ border-color:rgb(176, 122, 68) }
```

If you want to add a box shadow in that color use:

Here you see how a box with a 4 pixel `rgb(176, 122, 68)` colored shadow looks like.

```
.boxshadow{ -moz-box-shadow:4px 4px 4px  
4px rgb(176, 122, 68); -webkit-box-  
shadow:4px 4px 4px 4px rgb(176, 122, 68);  
box-shadow:4px 4px 4px 4px rgb(176, 122,  
68) }
```

Background

The CSS property to change the background color of an element to Android 4289755716 is called "background". The background property can be set on classes, ids or directly on the HTML element.

```
.background, #background, body{  
background: rgb(176, 122, 68) }
```

If only the background color should be changed can be used:

```
.background{ background-color: rgb(176,  
122, 68) }
```

This example shows the color as background, it is applied via the CSS property "background".

To optimize and compress your CSS code, you can use our [online CSS compressor and optimizer](#) based on csstidy. If you want to create a linear or radial gradient as background or border, check our [CSS Gradient Generator](#).

Hey! You found this booklet interesting? Support Converting Colors with the new Membership Option!

The pro membership hides all ads, plus gives you double the colors in the color bucket, and more awesome pro features!

[Learn more, Memberships starting at \\$2.50/m!](#)

**Follow me
on Twitter!**

@ConvertingColor