

Converting Colors

Android(4289758827)

Have a look what the booklet for
Android(4289758827) contains.

Android(4289758827)	3
<i>Conversions</i>	4
<i>Details</i>	6
<i>Harmonies</i>	11
<i>Previews</i>	23
<i>Color Blindness Simulation</i>	26
<i>CSS Examples</i>	29

Color

Android(4289758827)

Conversions

Conversions Part 1

Format	Color
Hex	B0866B
RGB	176, 134, 107
RGB Percent	69%, 53%, 42%
CMY	0.3098, 0.4745, 0.5804
CMYK	0.00, 0.24, 0.39, 0.31
HSL	23°, 30%, 55%
HSV	23°, 39%, 69%
XYZ	29.0834, 27.3418, 17.6546
YIQ	143.4800, 33.6990, 0.5070

Conversions

Conversions Part 2

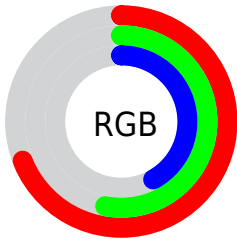
Format	Color
R_{YB}	176, 151, 107
Decimal	11568747
CIE _{Lab}	59.29, 12.41, 20.75
CIE _{LCh}	59, 24.176, 59.125
Yxy	27.3418, 0.3926, 0.3691
Android (android.graphics.Color)	4289758827 (0xFFB0866B)
YUV	143.4800, -17.9846, 28.5200
Hunter-Lab	52.2894, 7.7754, 16.5844

Details

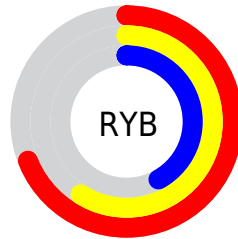
The Android color `4289758827` is a dark color, and the websafe version is hex `CC9966`. A complement of this color would be `4285240752`, and the grayscale version is `4287664272`.

A 20% lighter version of the original color is `4293507999`, and `4286207035` is the 20% darker color. If you saturate the color by 10%, you get `4289755993`, and if you desaturate by 10%, it is `4289761661`.

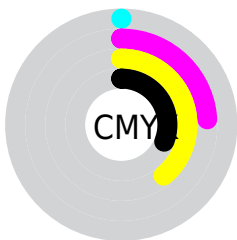
Distribution



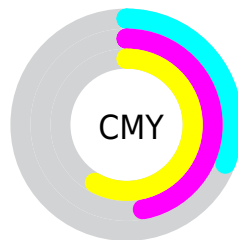
- Red (69%)
- Green (53%)
- Blue (42%)



- Red (69%)
- Yellow (59%)
- Blue (42%)



- Cyan (0%)
- Magenta (24%)
- Yellow (39%)
- Black (31%)



- Cyan (31%)
- Magenta (47%)
- Yellow (58%)

Brightness & Saturation Gradients

These gradients show how the Android color 4289758827 changes by changing the brightness by 10 percent. The first figure shows a shift by +10% for each color and the second figure -10%.

Similar to the brightness gradients but the following saturation gradients show a change of the Android color 4289758827 by changing the saturation by 10% instead.



4289758827



4289758827

4294967295



4287982931



4293507999



4286207035



4294956986



4284497189



4294964181



4282787600



4294967282



4281274880



4279566336



4278190080



4289758827



4289758827



4289755993



4289761661

 4289753416

 4289764238

 4289750582

 4289767072

 4289747749

 4289769905

 4289744915

 4289772739

 4289742337

 4289775317

 4289742080

 4289778150

 4289780984

 4289783551

Harmonies

Analogous

The Analogous color harmony consists of three colors that are next to each other on the color wheel.



4290347387



4289758827



4288646500

Triad

The Triadic color harmony groups three colors that are evenly spaced from another and form a triangle on the color wheel.



4289758827



4284062605



4287728052

Complementary

The Complementary color scheme is a pair of colors which are on the opposite of each other on the color wheel.



4289758827



4285240752

Split Complementary

Split-complementary colors differ from the complementary color scheme. The scheme consists of three colors, the original color and two neighbors of the complement color.



4285764025



4289758827



4283341475

Square

The Square scheme is like the rectangle color scheme, but the four colors are evenly spaced on the color wheel.



4289758827



4285569144



4283996083



4289299365

Rectangle

The Rectangle color scheme consists of four colors that form a rectangle on the color wheel.



4289758827



4287664742



4283996083



4287073463

Sweetspot

The Sweet Spot groups the original color and five complimentary colors.



4289758827



4293318090



4289751958



4285753699



4294111986



4285756275

Same Dimension

The Same Dimension uses a secret algorithm to generate beautiful new colors.



4289758827



4293305466



4289767531



4284044368



4288232448



4279896576

Inverse Universe

The Inverse Universe completely reimagines the original color for something new.



4285240752



4286233574



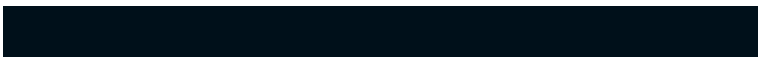
4285232048



4283455065



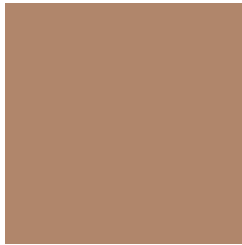
4278214041



4278194202

Previews

White Background



This preview shows how the Android color 4289758827 looks on a white background.

Color Contrast Check

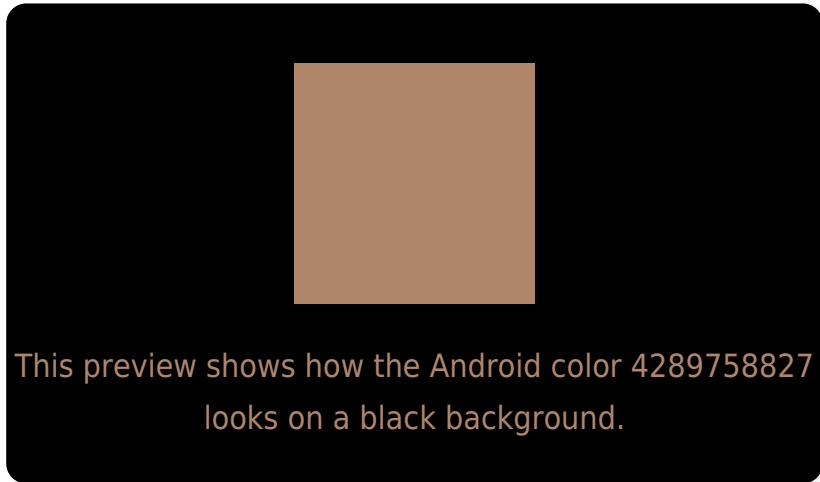
Large Text (above 18pt) WCAG AA ✓ Pass

Any Text WCAG AA ✗ Fail

Large Text (above 18pt) WCAG AAA ✗ Fail

Any Text WCAG AAA ✗ Fail

Black Background



Color Contrast Check

Large Text (above 18pt) WCAG AA ✓ Pass

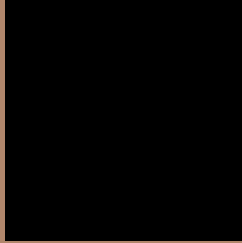
Any Text WCAG AA ✓ Pass

Large Text (above 18pt) WCAG AAA ✓ Pass

Any Text WCAG AAA × Fail

If you want to check with other color combinations, try the [Color Contrast Checker](#).

Android 4289758827 Background



This preview shows how black text looks on a background with the Android color 4289758827.



This preview shows how white text looks on a background with the Android color 4289758827.

Color Blindness Simulation

Color vision deficiency is a very complex topic, and I could not describe the different causes any better than Wikipedia does, so if you want to learn more, you should check out their [article about color blindness](#).

Dichromacy



Original Color
4289758827

Protanopia
4288188271

Deuteranopia
4289300842



Tritanopia
4289954443

Trichromacy



Original Color
4289758827

Protanomaly
4288777326

Deuteranomaly
4289497194

Tritanomaly
4289889151

Monochromacy



Original Color
4289758827

Achromatopsia
4287598479

Achromatomaly
4288384130

CSS Examples

Text

The CSS property to change the color of the text to Android 4289758827 is called "color". The color property can be set on classes, ids or directly on the HTML element.

This example shows how text in the color `rgb(176, 134, 107)` looks like.

```
.text, #text, p{  
    color:rgb(176, 134, 107)  
}
```

If you want to add a text shadow in that color use the text-shadow property, you can generate a text shadow directly with our [CSS Text Shadow Generator](#).

Here you see how black text with a 4 pixel rgb(176, 134, 107) colored shadow looks like.

```
.shadow{ text-shadow: 4px 4px 2px rgb(176, 134, 107) }
```

Border

The CSS property to change the border of an element to Android 4289758827 is called "border". The border property can be set on classes, ids or directly on the HTML element.

This example shows the color as border, it can be applied via the CSS property "border" or "border-color".

```
.border, #border, table{ border:4px solid rgb(176, 134, 107) }
```

If only the border color should be changed use the property `border-color`.

```
.border{ border-color:rgb(176, 134, 107) }
```

If you want to add a box shadow in that color use:

Here you see how a box with a 4 pixel `rgb(176, 134, 107)` colored shadow looks like.

```
.boxshadow{ -moz-box-shadow:4px 4px 4px  
4px rgb(176, 134, 107); -webkit-box-  
shadow:4px 4px 4px 4px rgb(176, 134, 107);  
box-shadow:4px 4px 4px 4px rgb(176, 134,  
107) }
```

Background

The CSS property to change the background color of an element to Android 4289758827 is called "background". The background property can be set on classes, ids or directly on the HTML element.

```
.background, #background, body{  
background: rgb(176, 134, 107) }
```

If only the background color should be changed can be used:

```
.background{ background-color: rgb(176,  
134, 107) }
```

This example shows the color as background, it is applied via the CSS property "background".

To optimize and compress your CSS code, you can use our [online CSS compressor and optimizer](#) based on csstidy. If you want to create a linear or radial gradient as background or border, check our [CSS Gradient Generator](#).

Hey! You found this booklet interesting? Support Converting Colors with the new Membership Option!

The pro membership hides all ads, plus gives you double the colors in the color bucket, and more awesome pro features!

[Learn more, Memberships starting at \\$2.50/m!](#)

**Follow me
on Twitter!**

@ConvertingColor