

Converting Colors

Android(4289759068)

Have a look what the booklet for
Android(4289759068) contains.

Android(4289759068)	3
<i>Conversions</i>	4
<i>Details</i>	6
<i>Harmonies</i>	11
<i>Previews</i>	23
<i>Color Blindness Simulation</i>	26
<i>CSS Examples</i>	29

Color

Android(4289759068)

Conversions

Conversions Part 1

Format	Color
Hex	B0875C
RGB	176, 135, 92
RGB Percent	69%, 53%, 36%
CMY	0.3098, 0.4706, 0.6392
CMYK	0.00, 0.23, 0.48, 0.31
HSL	31°, 35%, 53%
HSV	31°, 48%, 69%
XYZ	28.5002, 27.3308, 13.8985
YIQ	142.3570, 38.2390, -4.6810

Conversions

Conversions Part 2

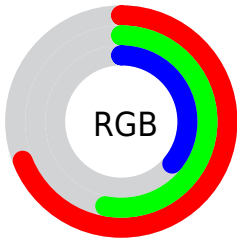
Format	Color
RYB	172, 176, 92
Decimal	11568988
CIELab	59.28, 10.18, 29.09
CIELCh	59, 30.822, 70.709
Yxy	27.3308, 0.4087, 0.3920
Android (android.graphics.Color)	4289759068 (0xFFB0875C)
YUV	142.3570, -24.8260, 29.5049
Hunter-Lab	52.2788, 5.8228, 20.8328

Details

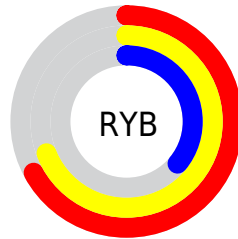
The Android color `4289759068` is a dark color, and the websafe version is hex `CC9966`. A complement of this color would be `4284253616`, and the grayscale version is `4287598479`.

A 20% lighter version of the original color is `4293508239`, and `4286141741` is the 20% darker color. If you saturate the color by 10%, you get `4289756746`, and if you desaturate by 10%, it is `4289761390`.

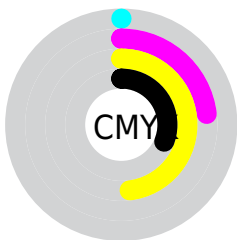
Distribution



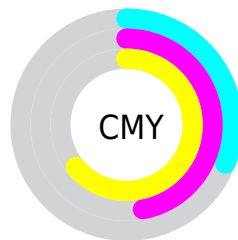
- Red (69%)
- Green (53%)
- Blue (36%)



- Red (67%)
- Yellow (69%)
- Blue (36%)



- Cyan (0%)
- Magenta (23%)
- Yellow (48%)
- Black (31%)



- Cyan (31%)
- Magenta (47%)
- Yellow (64%)

Brightness & Saturation Gradients

These gradients show how the Android color 4289759068 changes by changing the brightness by 10 percent. The first figure shows a shift by +10% for each color and the second figure -10%.

Similar to the brightness gradients but the following saturation gradients show a change of the Android color 4289759068 by changing the saturation by 10% instead.

 4289759068

 4289759068

4294967295

 4287917636

 4293508239

 4286141741


 4294957225

 4284431895

 4294964421

 4282787840

 4294967265

 4281144320

4294967294

 4279304192

 4278190080

 4289759068

 4289759068

 4289756746

 4289761390

■ 4289754681

■ 4289763455

■ 4289752359

■ 4289765777

■ 4289750294

■ 4289767842

■ 4289747972

■ 4289770164

■ 4289747456

■ 4289772486

■ 4289774551

■ 4289776873

■ 4289778938

Harmonies

Analogous

The Analogous color harmony consists of three colors that are next to each other on the color wheel.



4290805357



4289759068



4288122969

Triad

The Triadic color harmony groups three colors that are evenly spaced from another and form a triangle on the color wheel.



4289759068



4281834904



4288578744

Complementary

The Complementary color scheme is a pair of colors which are on the opposite of each other on the color wheel.



4289759068



4284253616

Split Complementary

Split-complementary colors differ from the complementary color scheme. The scheme consists of three colors, the original color and two neighbors of the complement color.



4286090948



4289759068



4281048241

Square

The Square scheme is like the rectangle color scheme, but the four colors are evenly spaced on the color wheel.



4289759068



4284062844



4283209409



4290346145

Rectangle

The Rectangle color scheme consists of four colors that form a rectangle on the color wheel.



4289759068



4286879071



4283209409



4287858621

Sweetspot

The Sweet Spot groups the original color and five complimentary colors.



4289759068



4293318341



4289748102



4285753695



4294111986



4285756275

Same Dimension

The Same Dimension uses a secret algorithm to generate beautiful new colors.



4289759068



4293305955



4289769564



4284044624



4288237056



4279897344

Inverse Universe

The Inverse Universe completely reimagines the original color for something new.



4284253616



4284720102



4284243120



4283454809



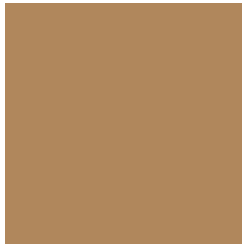
4278209433



4278193178

Previews

White Background



This preview shows how the Android color 4289759068 looks on a white background.

Color Contrast Check

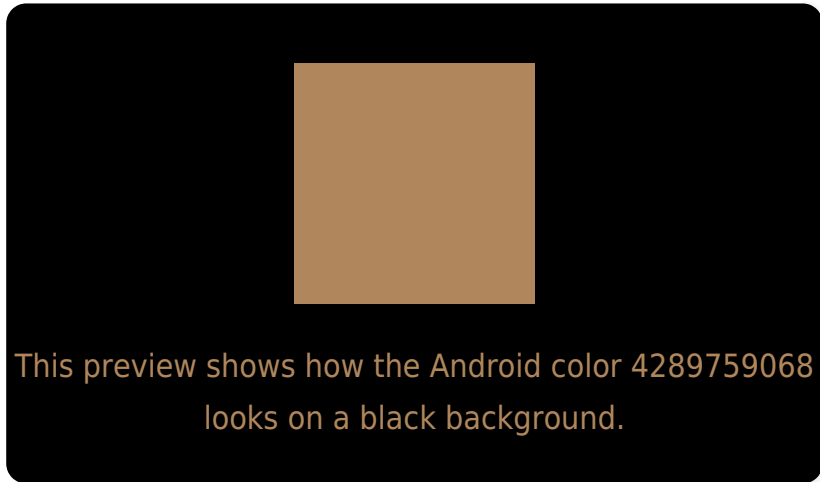
Large Text (above 18pt) WCAG AA ✓ Pass

Any Text WCAG AA ✗ Fail

Large Text (above 18pt) WCAG AAA ✗ Fail

Any Text WCAG AAA ✗ Fail

Black Background



Color Contrast Check

Large Text (above 18pt) WCAG AA ✓ Pass

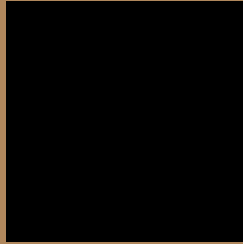
Any Text WCAG AA ✓ Pass

Large Text (above 18pt) WCAG AAA ✓ Pass

Any Text WCAG AAA × Fail

If you want to check with other color combinations, try the [Color Contrast Checker](#).

Android 4289759068 Background



This preview shows how black text looks on a background with the Android color 4289759068.



This preview shows how white text looks on a background with the Android color 4289759068.

Color Blindness Simulation

Color vision deficiency is a very complex topic, and I could not describe the different causes any better than Wikipedia does, so if you want to learn more, you should check out their [article about color blindness](#).

Dichromacy



Original Color
4289759068

Protanopia
4288384863

Deuteranopia
4289497436



Tritanopia
4290019723

Trichromacy



Original Color
4289759068

Protanomaly
4288908382

Deuteranomaly
4289562716

Tritanomaly
4289954682

Monochromacy



Original Color
4289759068

Achromatopsia
4287532686

Achromatomaly
4288318332

CSS Examples

Text

The CSS property to change the color of the text to Android 4289759068 is called "color". The color property can be set on classes, ids or directly on the HTML element.

This example shows how text in the color `rgb(176, 135, 92)` looks like.

```
.text, #text, p{  
    color:rgb(176, 135, 92)  
}
```

If you want to add a text shadow in that color use the text-shadow property, you can generate a text shadow directly with our [CSS Text Shadow Generator](#).

Here you see how black text with a 4 pixel rgb(176, 135, 92) colored shadow looks like.

```
.shadow{ text-shadow: 4px 4px 2px rgb(176, 135, 92) }
```

Border

The CSS property to change the border of an element to Android 4289759068 is called "border". The border property can be set on classes, ids or directly on the HTML element.

This example shows the color as border, it can be applied via the CSS property "border" or "border-color".

```
.border, #border, table{ border:4px solid rgb(176, 135, 92) }
```

If only the border color should be changed use the property `border-color`.

```
.border{ border-color:rgb(176, 135, 92) }
```

If you want to add a box shadow in that color use:

Here you see how a box with a 4 pixel `rgb(176, 135, 92)` colored shadow looks like.

```
.boxshadow{ -moz-box-shadow:4px 4px 4px  
4px rgb(176, 135, 92); -webkit-box-  
shadow:4px 4px 4px 4px rgb(176, 135, 92);  
box-shadow:4px 4px 4px 4px rgb(176, 135,  
92) }
```

Background

The CSS property to change the background color of an element to Android 4289759068 is called "background". The background property can be set on classes, ids or directly on the HTML element.

```
.background, #background, body{  
background: rgb(176, 135, 92) }
```

If only the background color should be changed can be used:

```
.background{ background-color: rgb(176,  
135, 92) }
```

This example shows the color as background, it is applied via the CSS property "background".

To optimize and compress your CSS code, you can use our [online CSS compressor and optimizer](#) based on csstidy. If you want to create a linear or radial gradient as background or border, check our [CSS Gradient Generator](#).

Hey! You found this booklet interesting? Support Converting Colors with the new Membership Option!

The pro membership hides all ads, plus gives you double the colors in the color bucket, and more awesome pro features!

[Learn more, Memberships starting at \\$2.50/m!](#)

**Follow me
on Twitter!**

@ConvertingColor