

# Converting Colors

Android(4289761943)

Have a look what the booklet for  
Android(4289761943) contains.

<b>Android(4289761943)</b> .....	3
<i><b>Conversions</b></i> .....	4
<i><b>Details</b></i> .....	6
<i><b>Harmonies</b></i> .....	11
<i><b>Previews</b></i> .....	23
<i><b>Color Blindness Simulation</b></i> .....	26
<i><b>CSS Examples</b></i> .....	29

# **Color**

**Android(4289761943)**

# Conversions

## Conversions Part 1

<b>Format</b>	<b>Color</b>
Hex	<a href="#">B09297</a>
RGB	<a href="#">176, 146, 151</a>
RGB Percent	<a href="#">69%, 57%, 59%</a>
CMY	<a href="#">0.3098, 0.4275, 0.4078</a>
CMYK	<a href="#">0.00, 0.17, 0.14, 0.31</a>
HSL	<a href="#">350°, 16%, 63%</a>
HSV	<a href="#">350°, 17%, 69%</a>
XYZ	<a href="#">33.7693, 32.0222, 33.6792</a>
YIQ	<a href="#">155.5400, 16.2750, 7.9150</a>

# Conversions

## Conversions Part 2

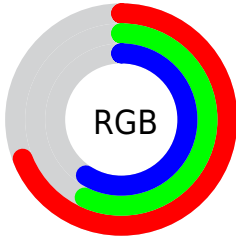
<b>Format</b>	<b>Color</b>
<b>RYB</b>	176, 146, 151
Decimal	11571863
CIELab	63.36, 12.06, 1.57
CIELCh	63, 12.159, 7.426
Yxy	32.0222, 0.3395, 0.3219
Android (android.graphics.Color)	4289761943 (0xFFB09297)
YUV	155.5400, -2.2382, 17.9434
Hunter-Lab	56.5882, 7.4914, 4.3245

# Details

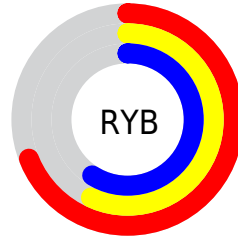
The Android color `4289761943` is a light color, and the websafe version is hex `CC9999`. A complement of this color would be `4287803563`, and the grayscale version is `4288453788`.

A 20% lighter version of the original color is `4293445837`, and `4286275428` is the 20% darker color. If you saturate the color by 10%, you get `4289757320`, and if you desaturate by 10%, it is `4289766566`.

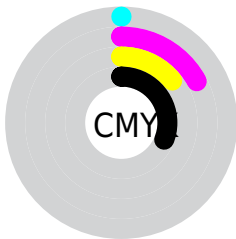
# Distribution



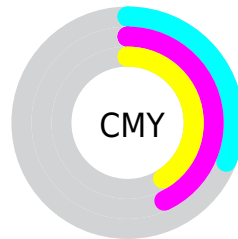
- Red (69%)
- Green (57%)
- Blue (59%)



- Red (69%)
- Yellow (57%)
- Blue (59%)



- Cyan (0%)
- Magenta (17%)
- Yellow (14%)
- Black (31%)



- Cyan (31%)
- Magenta (43%)
- Yellow (41%)

# Brightness & Saturation Gradients

These gradients show how the Android color 4289761943 changes by changing the brightness by 10 percent. The first figure shows a shift by +10% for each color and the second figure -10%.

Similar to the brightness gradients but the following saturation gradients show a change of the Android color 4289761943 by changing the saturation by 10% instead.



 4289761943

 4289761943

4294967295

 4287985789

 4293445837

 4286275428

 4294960361

 4284631116

 4283052342

 4281539616

 4280222473

 4278190080

 4289761943

 4289761943

 4289757320

 4289766566

 4289752954

 4289770932

 4289748331

 4289775555

 4289743964

 4289779922

 4289739342

 4289784544

 4289734719

 4289789167

 4289730352

 4289789950

 4289725730

 4289789951

 4289724445

# Harmonies

## Analogous

The Analogous color harmony consists of three colors that are next to each other on the color wheel.



4289368994



4289761943



4289762189

# Triad

The Triadic color harmony groups three colors that are evenly spaced from another and form a triangle on the color wheel.



4289761943



4287864200



4286946733

# Complementary

The Complementary color scheme is a pair of colors which are on the opposite of each other on the color wheel.



4289761943



4287803563

# Split Complementary

Split-complementary colors differ from the complementary color scheme. The scheme consists of three colors, the original color and two neighbors of the complement color.



4286488486



4289761943



4287078289

# Square

The Square scheme is like the rectangle color scheme, but the four colors are evenly spaced on the color wheel.



4289761943



4288649604



4286554268



4287732143

# Rectangle

The Rectangle color scheme consists of four colors that form a rectangle on the color wheel.



4289761943



4289500552



4286554268



4286750379



# Sweetspot

The Sweet Spot groups the original color and five complimentary colors.



4289761943



4293319388



4289434288



4285754477



4294111986



4285756275



# Same Dimension

The Same Dimension uses a secret algorithm to generate beautiful new colors.



4289761943



4293310655



4289764498



4284043346



4288217114



4279894020



# Inverse Universe

The Inverse Universe completely reimagines the original color for something new.



4289761943



4293310655



4287801008



4284043346



4288217113

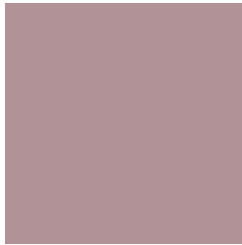


4279894020



# Previews

## White Background



This preview shows how the Android color 4289761943 looks on a white background.

## Color Contrast Check

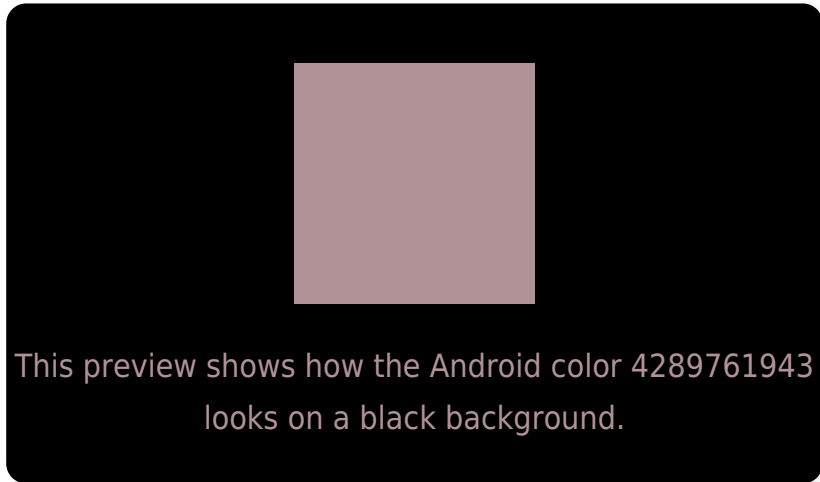
Large Text (above 18pt) WCAG AA × Fail

Any Text WCAG AA × Fail

Large Text (above 18pt) WCAG AAA × Fail

Any Text WCAG AAA × Fail

# Black Background



## Color Contrast Check

Large Text (above 18pt) WCAG AA ✓ Pass

Any Text WCAG AA ✓ Pass

Large Text (above 18pt) WCAG AAA ✓ Pass

Any Text WCAG AAA ✓ Pass

If you want to check with other color combinations, try the [Color Contrast Checker](#).



# Android 4289761943 Background



This preview shows how black text looks on a background with the Android color 4289761943.



This preview shows how white text looks on a background with the Android color 4289761943.

# Color Blindness Simulation

Color vision deficiency is a very complex topic, and I could not describe the different causes any better than Wikipedia does, so if you want to learn more, you should check out their [article about color blindness](#).


## Dichromacy



**Original Color**  
4289761943

**Protanopia**  
4288453019

**Deuteranopia**  
4289303959



**Tritanopia**  
4289827228

# Trichromacy



**Original Color**  
4289761943

**Protanomaly**  
4288911002

**Deuteranomaly**  
4289500311

**Tritanomaly**  
4289827226

# Monochromacy



**Original Color**  
4289761943

**Achromatopsia**  
4288453788

**Achromatomaly**  
4288911514

# CSS Examples

## Text

The CSS property to change the color of the text to Android 4289761943 is called "color". The color property can be set on classes, ids or directly on the HTML element.

This example shows how text in the color `rgb(176, 146, 151)` looks like.

```
.text, #text, p{  
    color:rgb(176, 146, 151)  
}
```

If you want to add a text shadow in that color use the text-shadow property, you can generate a text shadow directly with our [CSS Text Shadow Generator](#).

Here you see how black text with a 4 pixel rgb(176, 146, 151) colored shadow looks like.

```
.shadow{ text-shadow: 4px 4px 2px rgb(176, 146, 151) }
```

## Border

The CSS property to change the border of an element to Android 4289761943 is called "border". The border property can be set on classes, ids or directly on the HTML element.

This example shows the color as border, it can be applied via the CSS property "border" or "border-color".

```
.border, #border, table{ border:4px solid rgb(176, 146, 151) }
```

If only the border color should be changed use the property `border-color`.

```
.border{ border-color:rgb(176, 146, 151) }
```

If you want to add a box shadow in that color use:

Here you see how a box with a 4 pixel `rgb(176, 146, 151)` colored shadow looks like.

```
.boxshadow{ -moz-box-shadow:4px 4px 4px  
4px rgb(176, 146, 151); -webkit-box-  
shadow:4px 4px 4px 4px rgb(176, 146, 151);  
box-shadow:4px 4px 4px 4px rgb(176, 146,  
151) }
```

# Background

The CSS property to change the background color of an element to Android 4289761943 is called "background". The background property can be set on classes, ids or directly on the HTML element.

```
.background, #background, body{  
background: rgb(176, 146, 151) }
```

If only the background color should be changed can be used:

```
.background{ background-color: rgb(176,  
146, 151) }
```

This example shows the color as background, it is applied via the CSS property "background".

To optimize and compress your CSS code, you can use our [online CSS compressor and optimizer](#) based on csstidy. If you want to create a linear or radial gradient as background or border, check our [CSS Gradient Generator](#).



Hey! You found this booklet interesting? Support Converting Colors with the new Membership Option!

The pro membership hides all ads, plus gives you double the colors in the color bucket, and more awesome pro features!

**[Learn more, Memberships starting at \\$2.50/m!](#)**

**Follow me  
on Twitter!**

@ConvertingColor