

Converting Colors

Android(4289815903)

Have a look what the booklet for
Android(4289815903) contains.

Android(4289815903)	3
<i>Conversions</i>	4
<i>Details</i>	6
<i>Harmonies</i>	11
<i>Previews</i>	23
<i>Color Blindness Simulation</i>	26
<i>CSS Examples</i>	29

Color

Android(4289815903)

Conversions

Conversions Part 1

Format	Color
Hex	B1655F
RGB	177, 101, 95
RGB Percent	69%, 40%, 37%
CMY	0.3059, 0.6039, 0.6275
CMYK	0.00, 0.43, 0.46, 0.31
HSL	4°, 34%, 53%
HSV	4°, 46%, 69%
XYZ	24.8507, 19.4807, 13.2768
YIQ	123.0400, 47.2220, 14.2460

Conversions

Conversions Part 2

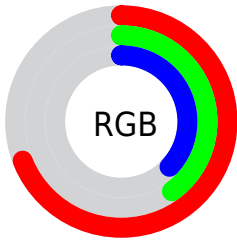
Format	Color
R_{YB}	177, 101, 95
Decimal	11625823
CIE _{Lab}	51.24, 29.87, 16.76
CIE _{LCh}	51, 34.254, 29.300
Yxy	19.4807, 0.4314, 0.3382
Android (android.graphics.Color)	4289815903 (0xFFB1655F)
YUV	123.0400, -13.8237, 47.3229
Hunter-Lab	44.1369, 23.2623, 13.0608

Details

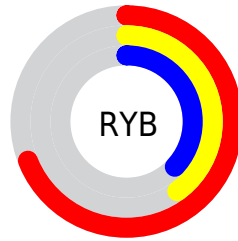
The Android color **4289815903** is a dark color, and the websafe version is hex **CC6666**. A complement of this color would be **4284459953**, and the grayscale version is **4286282619**.

A 20% lighter version of the original color is **4293630353**, and **4286133297** is the 20% darker color. If you saturate the color by 10%, you get **4289811789**, and if you desaturate by 10%, it is **4289820017**.

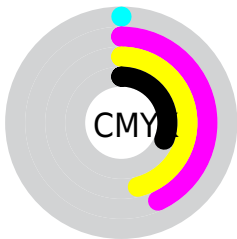
Distribution



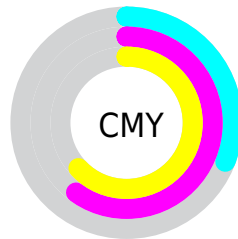
- Red (69%)
- Green (40%)
- Blue (37%)



- Red (69%)
- Yellow (40%)
- Blue (37%)



- Cyan (0%)
- Magenta (43%)
- Yellow (46%)
- Black (31%)



- Cyan (31%)
- Magenta (60%)
- Yellow (63%)

Brightness & Saturation Gradients

These gradients show how the Android color 4289815903 changes by changing the brightness by 10 percent. The first figure shows a shift by +10% for each color and the second figure -10%.

Similar to the brightness gradients but the following saturation gradients show a change of the Android color 4289815903 by changing the saturation by 10% instead.



4289815903



4289815903

4294967295



4287974471



4293630353



4286133297



4294948012



4284357660



4294955207



4282647298



4294962659



4281139201



4278190080



4289815903



4289815903



4289811789



4289820017



4289807420



4289824386

 4289803306

 4289828500

 4289798936

 4289832870

 4289794822

 4289836984

 4289793280

 4289841097

 4289845467

 4289849581

 4289853950

Harmonies

Analogous

The Analogous color harmony consists of three colors that are next to each other on the color wheel.



4289749884



4289815903



4288966216

Triad

The Triadic color harmony groups three colors that are evenly spaced from another and form a triangle on the color wheel.



4289815903



4283139931



4283071924

Complementary

The Complementary color scheme is a pair of colors which are on the opposite of each other on the color wheel.



4289815903



4284459953

Split Complementary

Split-complementary colors differ from the complementary color scheme. The scheme consists of three colors, the original color and two neighbors of the complement color.



4278224300



4289815903



4279601528

Square

The Square scheme is like the rectangle color scheme, but the four colors are evenly spaced on the color wheel.



4289815903



4285497670



4278225302



4286346157

Rectangle

The Rectangle color scheme consists of four colors that form a rectangle on the color wheel.



4289815903



4288050496



4278225302



4281630899

Sweetspot

The Sweet Spot groups the original color and five complimentary colors.



4289815903



4293314757



4289814444



4285751647



4294111986



4285756275

Same Dimension

The Same Dimension uses a secret algorithm to generate beautiful new colors.



4289815903



4293291621



4289826143



4284043600



4288219904



4279894528

Inverse Universe

The Inverse Universe completely reimagines the original color for something new.



4284459953



4284865766



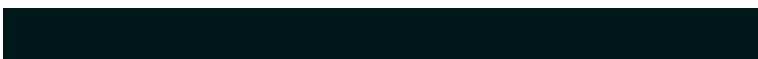
4284449713



4283455833



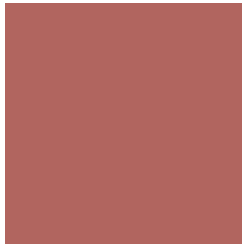
4278226585



4278196250

Previews

White Background



This preview shows how the Android color 4289815903 looks on a white background.

Color Contrast Check

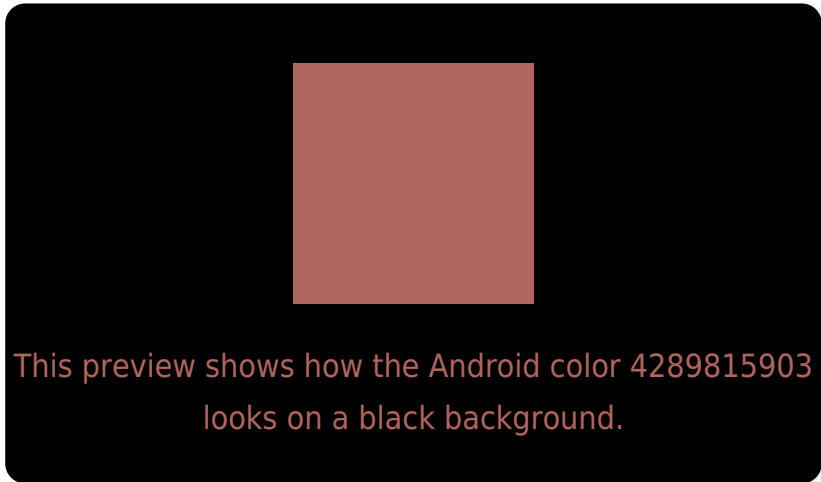
Large Text (above 18pt) WCAG AA ✓ Pass

Any Text WCAG AA ✗ Fail

Large Text (above 18pt) WCAG AAA ✗ Fail

Any Text WCAG AAA ✗ Fail

Black Background



Color Contrast Check

Large Text (above 18pt) WCAG AA ✓ Pass

Any Text WCAG AA ✓ Pass

Large Text (above 18pt) WCAG AAA ✓ Pass

Any Text WCAG AAA × Fail

If you want to check with other color combinations, try the [Color Contrast Checker](#).

Android 4289815903 Background



This preview shows how black text looks on a background with the Android color 4289815903.



This preview shows how white text looks on a background with the Android color 4289815903.

Color Blindness Simulation

Color vision deficiency is a very complex topic, and I could not describe the different causes any better than Wikipedia does, so if you want to learn more, you should check out their [article about color blindness](#).

Dichromacy



Original Color
4289815903

Protanopia
4286675561

Deuteranopia
4287657564

Trichromacy



Original Color
4289815903

Protanomaly
4287787621

Deuteranomaly
4288442461

Tritanomaly
4289881191

Monochromacy



Original Color
4289815903

Achromatopsia
4286282619

Achromatomaly
4287591281

CSS Examples

Text

The CSS property to change the color of the text to Android 4289815903 is called "color". The color property can be set on classes, ids or directly on the HTML element.

This example shows how text in the color `rgb(177, 101, 95)` looks like.

```
.text, #text, p{  
    color:rgb(177, 101, 95)  
}
```

If you want to add a text shadow in that color use the text-shadow property, you can generate a text shadow directly with our [CSS Text Shadow Generator](#).

Here you see how black text with a 4 pixel rgb(177, 101, 95) colored shadow looks like.

```
.shadow{ text-shadow: 4px 4px 2px rgb(177, 101, 95) }
```

Border

The CSS property to change the border of an element to Android 4289815903 is called "border". The border property can be set on classes, ids or directly on the HTML element.

This example shows the color as border, it can be applied via the CSS property "border" or "border-color".

```
.border, #border, table{ border:4px solid rgb(177, 101, 95) }
```

If only the border color should be changed use the property `border-color`.

```
.border{ border-color:rgb(177, 101, 95) }
```

If you want to add a box shadow in that color use:

Here you see how a box with a 4 pixel `rgb(177, 101, 95)` colored shadow looks like.

```
.boxshadow{ -moz-box-shadow:4px 4px 4px  
4px rgb(177, 101, 95); -webkit-box-  
shadow:4px 4px 4px 4px rgb(177, 101, 95);  
box-shadow:4px 4px 4px 4px rgb(177, 101,  
95) }
```

Background

The CSS property to change the background color of an element to Android 4289815903 is called "background". The background property can be set on classes, ids or directly on the HTML element.

```
.background, #background, body{  
background: rgb(177, 101, 95) }
```

If only the background color should be changed can be used:

```
.background{ background-color: rgb(177,  
101, 95) }
```

This example shows the color as background, it is applied via the CSS property "background".

To optimize and compress your CSS code, you can use our [online CSS compressor and optimizer](#) based on csstidy. If you want to create a linear or radial gradient as background or border, check our [CSS Gradient Generator](#).

Hey! You found this booklet interesting? Support Converting Colors with the new Membership Option!

The pro membership hides all ads, plus gives you double the colors in the color bucket, and more awesome pro features!

[Learn more, Memberships starting at \\$2.50/m!](#)

**Follow me
on Twitter!**

@ConvertingColor