

# Converting Colors

Android(4289818185)

Have a look what the booklet for  
Android(4289818185) contains.

<b>Android(4289818185)</b> .....	3
<i><b>Conversions</b></i> .....	4
<i><b>Details</b></i> .....	6
<i><b>Harmonies</b></i> .....	11
<i><b>Previews</b></i> .....	23
<i><b>Color Blindness Simulation</b></i> .....	26
<i><b>CSS Examples</b></i> .....	29

**Color**

**Android(4289818185)**

# Conversions

## Conversions Part 1

<b>Format</b>	<b>Color</b>
Hex	B16E49
RGB	177, 110, 73
RGB Percent	69%, 43%, 29%
CMY	0.3059, 0.5686, 0.7137
CMYK	0.00, 0.38, 0.59, 0.31
HSL	21°, 42%, 49%
HSV	21°, 59%, 69%
XYZ	24.9100, 20.9800, 9.0400
YIQ	125.8150, 51.8090, 2.6970

# Conversions

## Conversions Part 2

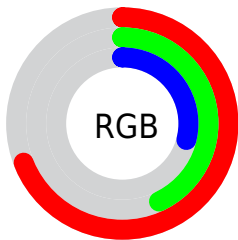
<b>Format</b>	<b>Color</b>
<b>RYB</b>	177, 130, 73
Decimal	11628105
CIELab	52.93, 22.87, 31.59
CIELCh	53, 39.002, 54.094
Yxy	20.9800, 0.4535, 0.3819
Android (android.graphics.Color)	4289818185 (0xFFB16E49)
YUV	125.8150, -26.0378, 44.8892
Hunter-Lab	45.8039, 16.9184, 20.3611

# Details

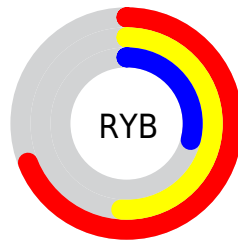
The Android color **4289818185** is a dark color, and the websafe version is hex **996633**. A complement of this color would be **4283010225**, and the grayscale version is **4286479998**.

A 20% lighter version of the original color is **4293698170**, and **4286070299** is the 20% darker color. If you saturate the color by 10%, you get **4289815351**, and if you desaturate by 10%, it is **4289821019**.

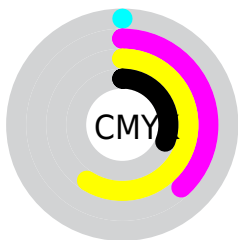
# Distribution



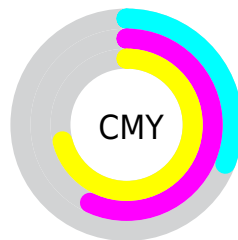
- Red (69%)
- Green (43%)
- Blue (29%)



- Red (69%)
- Yellow (51%)
- Blue (29%)



- Cyan (0%)
- Magenta (38%)
- Yellow (59%)
- Black (31%)



- Cyan (31%)
- Magenta (57%)
- Yellow (71%)

# Brightness & Saturation Gradients

These gradients show how the Android color 4289818185 changes by changing the brightness by 10 percent. The first figure shows a shift by +10% for each color and the second figure -10%.

Similar to the brightness gradients but the following saturation gradients show a change of the Android color 4289818185 by changing the saturation by 10% instead.





4289818185



4289818185

4294967295



4287911218



4293698170



4286070299



4294950292



4284294916



4294957487



4282585344



4294964939



4280942592



4294967271



4278190080



4289818185



4289818185



4289815351



4289821019



4289812262



4289824108

■ 4289809428

■ 4289826942

■ 4289806338

■ 4289830032

■ 4289806080

■ 4289832866

■ 4289835699

■ 4289838789

■ 4289841623

■ 4289844712

# Harmonies

## Analogous

The Analogous color harmony consists of three colors that are next to each other on the color wheel.



4290602085



4289818185



4288182842

# Triad

The Triadic color harmony groups three colors that are evenly spaced from another and form a triangle on the color wheel.



4289818185



4278226806



4286019772

# Complementary

The Complementary color scheme is a pair of colors which are on the opposite of each other on the color wheel.



4289818185



4283010225

# Split Complementary

Split-complementary colors differ from the complementary color scheme. The scheme consists of three colors, the original color and two neighbors of the complement color.



4281500865



4289818185



4278226841

# Square

The Square scheme is like the rectangle color scheme, but the four colors are evenly spaced on the color wheel.



4289818185



4283403350



4278226100



4288834470

# Rectangle

The Rectangle color scheme consists of four colors that form a rectangle on the color wheel.



4289818185



4286808379



4278226100



4284775615



# Sweetspot

The Sweet Spot groups the original color and five complimentary colors.



4289818185



4293315516



4289808781



4285751898



4294111986



4285756275



# Same Dimension

The Same Dimension uses a secret algorithm to generate beautiful new colors.



4289818185



4293295427



4289831241



4284044368



4288230912



4279896320



# Inverse Universe

The Inverse Universe completely reimagines the original color for something new.



4283010225



4282625254



4282997169



4283455065



4278215577

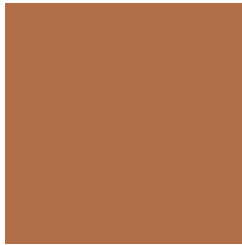


4278194202



# Previews

## White Background



This preview shows how the Android color 4289818185 looks on a white background.

## Color Contrast Check

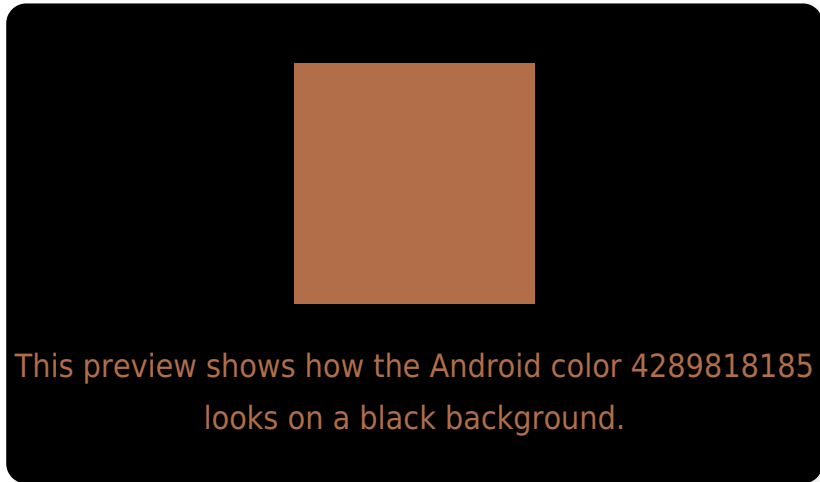
Large Text (above 18pt) WCAG AA ✓ Pass

Any Text WCAG AA ✗ Fail

Large Text (above 18pt) WCAG AAA ✗ Fail

Any Text WCAG AAA ✗ Fail

# Black Background



## Color Contrast Check

Large Text (above 18pt) WCAG AA ✓ Pass

Any Text WCAG AA ✓ Pass

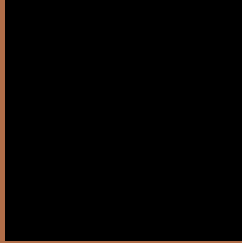
Large Text (above 18pt) WCAG AAA ✓ Pass

Any Text WCAG AAA × Fail

If you want to check with other color combinations, try the [Color Contrast Checker](#).



# Android 4289818185 Background



This preview shows how black text looks on a background with the Android color 4289818185.



This preview shows how white text looks on a background with the Android color 4289818185.

# Color Blindness Simulation

Color vision deficiency is a very complex topic, and I could not describe the different causes any better than Wikipedia does, so if you want to learn more, you should check out their [article about color blindness](#).

## Dichromacy



**Original Color**  
4289818185

**Protanopia**  
4287266639

**Deuteranopia**  
4288379207



# Trichromacy



**Original Color**  
4289818185

**Protanomaly**  
4288182605

**Deuteranomaly**  
4288902472

**Tritanomaly**  
4289948514

# Monochromacy



**Original Color**  
4289818185

**Achromatopsia**  
4286479998

**Achromatomaly**  
4287723627

# CSS Examples

## Text

The CSS property to change the color of the text to Android 4289818185 is called "color". The color property can be set on classes, ids or directly on the HTML element.

This example shows how text in the color `rgb(177, 110, 73)` looks like.

```
.text, #text, p{  
    color:rgb(177, 110, 73)  
}
```

If you want to add a text shadow in that color use the text-shadow property, you can generate a text shadow directly with our [CSS Text Shadow Generator](#).

Here you see how black text with a 4 pixel rgb(177, 110, 73) colored shadow looks like.

```
.shadow{ text-shadow: 4px 4px 2px rgb(177, 110, 73) }
```

## Border

The CSS property to change the border of an element to Android 4289818185 is called "border". The border property can be set on classes, ids or directly on the HTML element.

This example shows the color as border, it can be applied via the CSS property "border" or "border-color".

```
.border, #border, table{ border:4px solid rgb(177, 110, 73) }
```

If only the border color should be changed use the property `border-color`.

```
.border{ border-color:rgb(177, 110, 73) }
```

If you want to add a box shadow in that color use:

Here you see how a box with a 4 pixel `rgb(177, 110, 73)` colored shadow looks like.

```
.boxshadow{ -moz-box-shadow:4px 4px 4px  
4px rgb(177, 110, 73); -webkit-box-  
shadow:4px 4px 4px 4px rgb(177, 110, 73);  
box-shadow:4px 4px 4px 4px rgb(177, 110,  
73) }
```

# Background

The CSS property to change the background color of an element to Android 4289818185 is called "background". The background property can be set on classes, ids or directly on the HTML element.

```
.background, #background, body{  
background: rgb(177, 110, 73) }
```

If only the background color should be changed can be used:

```
.background{ background-color: rgb(177,  
110, 73) }
```

This example shows the color as background, it is applied via the CSS property "background".

To optimize and compress your CSS code, you can use our [online CSS compressor and optimizer](#) based on csstidy. If you want to create a linear or radial gradient as background or border, check our [CSS Gradient Generator](#).



Hey! You found this booklet interesting? Support Converting Colors with the new Membership Option!

The pro membership hides all ads, plus gives you double the colors in the color bucket, and more awesome pro features!

**[Learn more, Memberships starting at \\$2.50/m!](#)**

**Follow me  
on Twitter!**

@ConvertingColor