

# Converting Colors

Android(4289821259)

Have a look what the booklet for  
Android(4289821259) contains.

<b>Android(4289821259)</b> .....	3
<b><i>Conversions</i></b> .....	4
<b><i>Details</i></b> .....	6
<b><i>Harmonies</i></b> .....	11
<b><i>Previews</i></b> .....	23
<b><i>Color Blindness Simulation</i></b> .....	26
<b><i>CSS Examples</i></b> .....	29

# Color

**Android(4289821259)**

# Conversions

## Conversions Part 1

<b>Format</b>	<b>Color</b>
Hex	B17A4B
RGB	177, 122, 75
RGB Percent	69%, 48%, 29%
CMY	0.3059, 0.5216, 0.7059
CMYK	0.00, 0.31, 0.58, 0.31
HSL	28°, 40%, 49%
HSV	28°, 58%, 69%
XYZ	26.3610, 23.7742, 9.8561
YIQ	133.0870, 47.8670, -2.9570

# Conversions

## Conversions Part 2

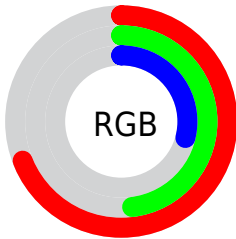
<b>Format</b>	<b>Color</b>
<b>RYB</b>	177, 162, 75
Decimal	11631179
CIELab	55.86, 16.32, 34.10
CIELCh	56, 37.804, 64.417
Yxy	23.7742, 0.4394, 0.3963
Android (android.graphics.Color)	4289821259 (0xFFB17A4B)
YUV	133.0870, -28.6369, 38.5117
Hunter-Lab	48.7588, 11.1766, 22.1462

# Details

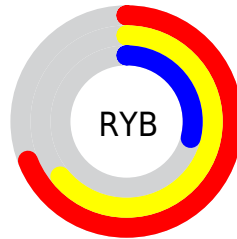
The Android color **4289821259** is a dark color, and the websafe version is hex **996633**. A complement of this color would be **4283138737**, and the grayscale version is **4286940549**.

A 20% lighter version of the original color is **4293635965**, and **4286138653** is the 20% darker color. If you saturate the color by 10%, you get **4289818681**, and if you desaturate by 10%, it is **4289823837**.

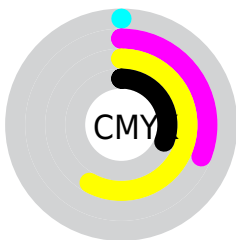
# Distribution



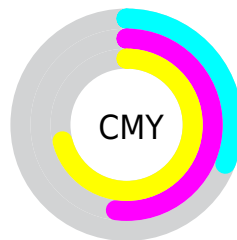
- Red (69%)
- Green (48%)
- Blue (29%)



- Red (69%)
- Yellow (64%)
- Blue (29%)



- Cyan (0%)
- Magenta (31%)
- Yellow (58%)
- Black (31%)



- Cyan (31%)
- Magenta (52%)
- Yellow (71%)

# Brightness & Saturation Gradients

These gradients show how the Android color 4289821259 changes by changing the brightness by 10 percent. The first figure shows a shift by +10% for each color and the second figure -10%.

Similar to the brightness gradients but the following saturation gradients show a change of the Android color 4289821259 by changing the saturation by 10% instead.





4289821259



4289821259

4294967295



4287979827



4293635965



4286138653



4294953623



4284363269



4294960818



4282653952



4294967246



4280944384



4294967274



4278190080



4289821259



4289821259



4289818681



4289823837



4289816360



4289826158

■ 4289813782

■ 4289828736

■ 4289811460

■ 4289831058

■ 4289810944

■ 4289833635

■ 4289835957

■ 4289838535

■ 4289840857

■ 4289843434

# Harmonies

## Analogous

The Analogous color harmony consists of three colors that are next to each other on the color wheel.



4290932578



4289821259



4288054851

# Triad

The Triadic color harmony groups three colors that are evenly spaced from another and form a triangle on the color wheel.



4289821259



4278228874



4287593404

# Complementary

The Complementary color scheme is a pair of colors which are on the opposite of each other on the color wheel.



4289821259



4283138737

# Split Complementary

Split-complementary colors differ from the complementary color scheme. The scheme consists of three colors, the original color and two neighbors of the complement color.



4284123335



4289821259



4278228650

# Square

The Square scheme is like the rectangle color scheme, but the four colors are evenly spaced on the color wheel.



4289821259



4283012456



4278227392



4289949859

# Rectangle

The Rectangle color scheme consists of four colors that form a rectangle on the color wheel.



4289821259



4286549064



4278227392



4286546114



# Sweetspot

The Sweet Spot groups the original color and five complimentary colors.



4289821259



4293316798



4289809283



4285752924



4294111986



4285756275



# Same Dimension

The Same Dimension uses a secret algorithm to generate beautiful new colors.



4289821259



4293300295



4289834059



4284044368



4288235264



4279897088



# Inverse Universe

The Inverse Universe completely reimagines the original color for something new.



4283138737



4282883558



4283125937



4283454809



4278211225

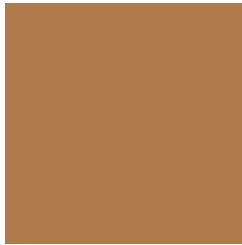


4278193690



# Previews

## White Background



This preview shows how the Android color 4289821259 looks on a white background.

## Color Contrast Check

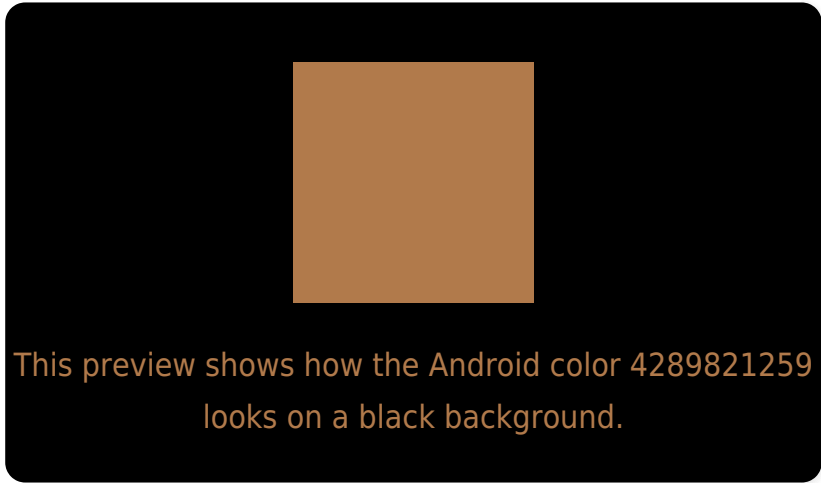
Large Text (above 18pt) WCAG AA ✓ Pass

Any Text WCAG AA ✗ Fail

Large Text (above 18pt) WCAG AAA ✗ Fail

Any Text WCAG AAA ✗ Fail

# Black Background



## Color Contrast Check

Large Text (above 18pt) WCAG AA ✓ Pass

Any Text WCAG AA ✓ Pass

Large Text (above 18pt) WCAG AAA ✓ Pass

Any Text WCAG AAA × Fail

If you want to check with other color combinations, try the [Color Contrast Checker](#).



## Android 4289821259 Background



This preview shows how black text looks on a background with the Android color 4289821259.



This preview shows how white text looks on a background with the Android color 4289821259.

# Color Blindness Simulation

Color vision deficiency is a very complex topic, and I could not describe the different causes any better than Wikipedia does, so if you want to learn more, you should check out their [article about color blindness](#).


## Dichromacy



**Original Color**  
4289821259

**Protanopia**  
4287858255

**Deuteranopia**  
4288970826



**Tritanopia**  
4290081917

# Trichromacy



**Original Color**  
4289821259

**Protanomaly**  
4288578126

**Deuteranomaly**  
4289297994

**Tritanomaly**  
4290016875

# Monochromacy



**Original Color**  
4289821259

**Achromatopsia**  
4286940549

**Achromatomaly**  
4287988080

# CSS Examples

## Text

The CSS property to change the color of the text to Android 4289821259 is called "color". The color property can be set on classes, ids or directly on the HTML element.

This example shows how text in the color `rgb(177, 122, 75)` looks like.

```
.text, #text, p{  
    color:rgb(177, 122, 75)  
}
```

If you want to add a text shadow in that color use the text-shadow property, you can generate a text shadow directly with our [CSS Text Shadow Generator](#).

Here you see how black text with a 4 pixel rgb(177, 122, 75) colored shadow looks like.

```
.shadow{ text-shadow: 4px 4px 2px rgb(177, 122, 75) }
```

## Border

The CSS property to change the border of an element to Android 4289821259 is called "border". The border property can be set on classes, ids or directly on the HTML element.

This example shows the color as border, it can be applied via the CSS property "border" or "border-color".

```
.border, #border, table{ border:4px solid rgb(177, 122, 75) }
```

If only the border color should be changed use the property `border-color`.

```
.border{ border-color:rgb(177, 122, 75) }
```

If you want to add a box shadow in that color use:

Here you see how a box with a 4 pixel `rgb(177, 122, 75)` colored shadow looks like.

```
.boxshadow{ -moz-box-shadow:4px 4px 4px  
4px rgb(177, 122, 75); -webkit-box-  
shadow:4px 4px 4px 4px rgb(177, 122, 75);  
box-shadow:4px 4px 4px 4px rgb(177, 122,  
75) }
```

# Background

The CSS property to change the background color of an element to Android 4289821259 is called "background". The background property can be set on classes, ids or directly on the HTML element.

```
.background, #background, body{  
background: rgb(177, 122, 75) }
```

If only the background color should be changed can be used:

```
.background{ background-color: rgb(177,  
122, 75) }
```

This example shows the color as background, it is applied via the CSS property "background".

To optimize and compress your CSS code, you can use our [online CSS compressor and optimizer](#) based on csstidy. If you want to create a linear or radial gradient as background or border, check our [CSS Gradient Generator](#).



Hey! You found this booklet interesting? Support Converting Colors with the new Membership Option!

The pro membership hides all ads, plus gives you double the colors in the color bucket, and more awesome pro features!

**[Learn more, Memberships starting at \\$2.50/m!](#)**

**Follow me  
on Twitter!**

@ConvertingColor