

# Converting Colors

Android(4289822347)

Have a look what the booklet for  
Android(4289822347) contains.

<b>Android(4289822347)</b> .....	3
<b><i>Conversions</i></b> .....	4
<b><i>Details</i></b> .....	6
<b><i>Harmonies</i></b> .....	11
<b><i>Previews</i></b> .....	23
<b><i>Color Blindness Simulation</i></b> .....	26
<b><i>CSS Examples</i></b> .....	29

**Color**

**Android(4289822347)**

# Conversions

## Conversions Part 1

<b>Format</b>	<b>Color</b>
Hex	<b>B17E8B</b>
RGB	<b>177, 126, 139</b>
RGB Percent	<b>69%, 49%, 55%</b>
CMY	<b>0.3059, 0.5059, 0.4549</b>
CMYK	<b>0.00, 0.29, 0.21, 0.31</b>
HSL	<b>345°, 25%, 59%</b>
HSV	<b>345°, 29%, 69%</b>
XYZ	<b>30.2525, 26.1329, 27.8758</b>
YIQ	<b>142.7310, 26.2230, 14.8550</b>

# Conversions

## Conversions Part 2

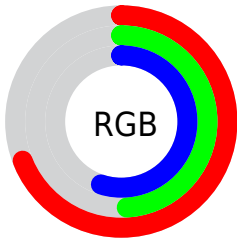
<b>Format</b>	<b>Color</b>
<b>R<sub>YB</sub></b>	177, 126, 139
Decimal	11632267
CIE <sub>Lab</sub>	58.16, 21.72, 0.87
CIE <sub>LCh</sub>	58, 21.734, 2.301
Yxy	26.1329, 0.3590, 0.3101
Android (android.graphics.Color)	4289822347 (0xFFB17E8B)
YUV	142.7310, -1.8394, 30.0539
Hunter-Lab	51.1203, 16.1739, 3.4536

# Details

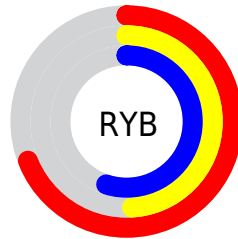
The Android color `4289822347` is a dark color, and the websafe version is hex `CC9999`. A complement of this color would be `4286493092`, and the grayscale version is `4287598479`.

A 20% lighter version of the original color is `4293505984`, and `4286270553` is the 20% darker color. If you saturate the color by 10%, you get `4289817726`, and if you desaturate by 10%, it is `4289826968`.

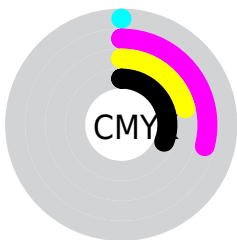
# Distribution



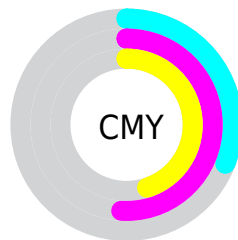
- Red (69%)
- Green (49%)
- Blue (55%)



- Red (69%)
- Yellow (49%)
- Blue (55%)



- Cyan (0%)
- Magenta (29%)
- Yellow (21%)
- Black (31%)



- Cyan (31%)
- Magenta (51%)
- Yellow (45%)

# Brightness & Saturation Gradients

These gradients show how the Android color 4289822347 changes by changing the brightness by 10 percent. The first figure shows a shift by +10% for each color and the second figure -10%.

Similar to the brightness gradients but the following saturation gradients show a change of the Android color 4289822347 by changing the saturation by 10% instead.





4289822347



4289822347

4294967295



4288046450



4293505984



4286270553



4294954972



4284626242



4294962169



4282982188



4281403671



4279959553



4278190080



4289822347



4289822347



4289817726



4289826968

 4289813361

 4289831333

 4289808739

 4289835955

 4289804118

 4289840576

 4289799497

 4289845197

 4289795132

 4289849562

 4289790511

 4289854183

 4289789997

 4289855477

 4289855487

# Harmonies

## Analogous

The Analogous color harmony consists of three colors that are next to each other on the color wheel.



4289102238



4289822347



4289888376

# Triad

The Triadic color harmony groups three colors that are evenly spaced from another and form a triangle on the color wheel.



4289822347



4286878059



4284453805

# Complementary

The Complementary color scheme is a pair of colors which are on the opposite of each other on the color wheel.



4289822347



4286493092

# Split Complementary

Split-complementary colors differ from the complementary color scheme. The scheme consists of three colors, the original color and two neighbors of the complement color.



4283733663



4289822347



4285437306

# Square

The Square scheme is like the rectangle color scheme, but the four colors are evenly spaced on the color wheel.



4289822347



4288187238



4284192653



4285959601

# Rectangle

The Rectangle color scheme consists of four colors that form a rectangle on the color wheel.



4289822347



4289561454



4284192653



4284060841



# Sweetspot

The Sweet Spot groups the original color and five complimentary colors.



4289822347



4293317078



4288904881



4285752937



4294111986



4285756275



# Same Dimension

The Same Dimension uses a secret algorithm to generate beautiful new colors.



4289822347



4293301674



4289825406



4284043347



4288217127



4279894022



# Inverse Universe

The Inverse Universe completely reimagines the original color for something new.



4289822347



4293301674



4286490033



4284043347



4288217127

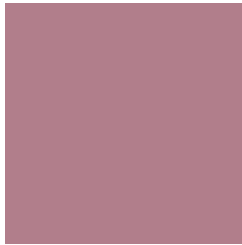


4279894022



# Previews

## White Background



This preview shows how the Android color 4289822347 looks on a white background.

## Color Contrast Check

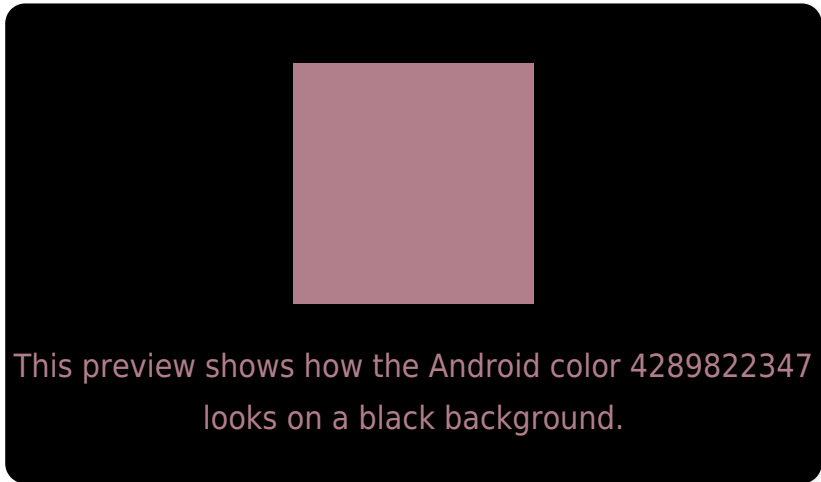
Large Text (above 18pt) WCAG AA ✓ Pass

Any Text WCAG AA ✗ Fail

Large Text (above 18pt) WCAG AAA ✗ Fail

Any Text WCAG AAA ✗ Fail

# Black Background



## Color Contrast Check

Large Text (above 18pt) WCAG AA ✓ Pass

Any Text WCAG AA ✓ Pass

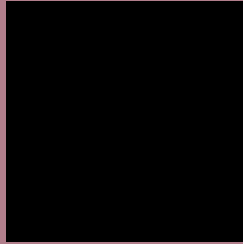
Large Text (above 18pt) WCAG AAA ✓ Pass

Any Text WCAG AAA × Fail

If you want to check with other color combinations, try the [Color Contrast Checker](#).



# Android 4289822347 Background



This preview shows how black text looks on a background with the Android color 4289822347.




This preview shows how white text looks on a background with the Android color 4289822347.

# Color Blindness Simulation

Color vision deficiency is a very complex topic, and I could not describe the different causes any better than Wikipedia does, so if you want to learn more, you should check out their [article about color blindness](#).

## Dichromacy





**Tritanopia**  
4289822344

# Trichromacy



**Original Color**  
4289822347

**Protanomaly**  
4288317072

**Deuteranomaly**  
4288906378

**Tritanomaly**  
4289822345

# Monochromacy



**Original Color**  
4289822347

**Achromatopsia**  
4287598479

**Achromatomaly**  
4288383374

# CSS Examples

## Text

The CSS property to change the color of the text to Android 4289822347 is called "color". The color property can be set on classes, ids or directly on the HTML element.

This example shows how text in the color `rgb(177, 126, 139)` looks like.

```
.text, #text, p{  
    color:rgb(177, 126, 139)  
}
```

If you want to add a text shadow in that color use the text-shadow property, you can generate a text shadow directly with our [CSS Text Shadow Generator](#).

Here you see how black text with a 4 pixel rgb(177, 126, 139) colored shadow looks like.

```
.shadow{ text-shadow: 4px 4px 2px rgb(177, 126, 139) }
```

## Border

The CSS property to change the border of an element to Android 4289822347 is called "border". The border property can be set on classes, ids or directly on the HTML element.

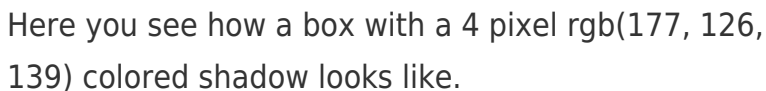
This example shows the color as border, it can be applied via the CSS property "border" or "border-color".

```
.border, #border, table{ border:4px solid rgb(177, 126, 139) }
```

If only the border color should be changed use the property `border-color`.

```
.border{ border-color:rgb(177, 126, 139) }
```

If you want to add a box shadow in that color use:



Here you see how a box with a 4 pixel `rgb(177, 126, 139)` colored shadow looks like.

```
.boxshadow{ -moz-box-shadow:4px 4px 4px 4px rgb(177, 126, 139); -webkit-box-shadow:4px 4px 4px 4px rgb(177, 126, 139); box-shadow:4px 4px 4px 4px rgb(177, 126, 139) }
```

# Background

The CSS property to change the background color of an element to Android 4289822347 is called "background". The background property can be set on classes, ids or directly on the HTML element.

```
.background, #background, body{  
background: rgb(177, 126, 139) }
```

If only the background color should be changed can be used:

```
.background{ background-color: rgb(177,  
126, 139) }
```

This example shows the color as background, it is applied via the CSS property "background".

To optimize and compress your CSS code, you can use our [online CSS compressor and optimizer](#) based on csstidy. If you want to create a linear or radial gradient as background or border, check our [CSS Gradient Generator](#).



Hey! You found this booklet interesting? Support Converting Colors with the new Membership Option!

The pro membership hides all ads, plus gives you double the colors in the color bucket, and more awesome pro features!

**[Learn more, Memberships starting at \\$2.50/m!](#)**

**Follow me  
on Twitter!**

@ConvertingColor