

Converting Colors

Android(4289822594)

Have a look what the booklet for
Android(4289822594) contains.

Android(4289822594)	3
<i>Conversions</i>	4
<i>Details</i>	6
<i>Harmonies</i>	11
<i>Previews</i>	23
<i>Color Blindness Simulation</i>	26
<i>CSS Examples</i>	29

Color

Android(4289822594)

Conversions

Conversions Part 1

Format	Color
Hex	B17F82
RGB	177, 127, 130
RGB Percent	69%, 50%, 51%
CMY	0.3059, 0.5020, 0.4902
CMYK	0.00, 0.28, 0.27, 0.31
HSL	356°, 24%, 60%
HSV	356°, 28%, 69%
XYZ	29.7501, 26.1376, 24.5961
YIQ	142.2920, 28.8370, 11.5330

Conversions

Conversions Part 2

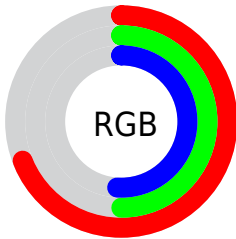
Format	Color
R_{YB}	177, 127, 130
Decimal	11632514
CIE _{Lab}	58.17, 19.80, 6.07
CIE _{LCh}	58, 20.707, 17.045
Yxy	26.1376, 0.3696, 0.3248
Android (android.graphics.Color)	4289822594 (0xFFB17F82)
YUV	142.2920, -6.0600, 30.4389
Hunter-Lab	51.1249, 14.4024, 7.2631

Details

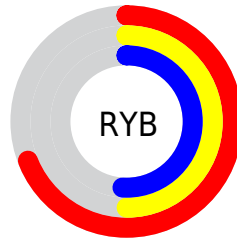
The Android color `4289822594` is a dark color, and the websafe version is hex `CC9999`. A complement of this color would be `4286558638`, and the grayscale version is `4287532686`.

A 20% lighter version of the original color is `4293571767`, and `4286270801` is the 20% darker color. If you saturate the color by 10%, you get `4289817969`, and if you desaturate by 10%, it is `4289827219`.

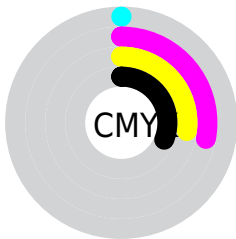
Distribution



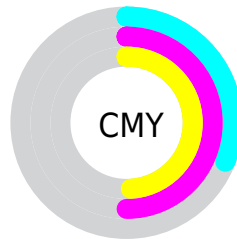
- Red (69%)
- Green (50%)
- Blue (51%)



- Red (69%)
- Yellow (50%)
- Blue (51%)



- Cyan (0%)
- Magenta (28%)
- Yellow (27%)
- Black (31%)



- Cyan (31%)
- Magenta (50%)
- Yellow (49%)

Brightness & Saturation Gradients

These gradients show how the Android color 4289822594 changes by changing the brightness by 10 percent. The first figure shows a shift by +10% for each color and the second figure -10%.

Similar to the brightness gradients but the following saturation gradients show a change of the Android color 4289822594 by changing the saturation by 10% instead.



4289822594



4289822594

4294967295



4288046697



4293571767



4286270801



4294955218



4284560954



4294962415



4282916900



4281403919



4279762945



4278190080



4289822594



4289822594



4289817969



4289827219

 4289813601

 4289831587

 4289808976

 4289836212

 4289804351

 4289840837

 4289799983

 4289845461

 4289795358

 4289849830

 4289790734

 4289854454

 4289789963

 4289855487

Harmonies

Analogous

The Analogous color harmony consists of three colors that are next to each other on the color wheel.



4289429652



4289822594



4289561202

Triad

The Triadic color harmony groups three colors that are evenly spaced from another and form a triangle on the color wheel.



4289822594



4286223219



4285239471

Complementary

The Complementary color scheme is a pair of colors which are on the opposite of each other on the color wheel.



4289822594



4286558638

Split Complementary

Split-complementary colors differ from the complementary color scheme. The scheme consists of three colors, the original color and two neighbors of the complement color.



4284126374



4289822594



4284913283

Square

The Square scheme is like the rectangle color scheme, but the four colors are evenly spaced on the color wheel.



4289822594



4287598185



4284061334



4286876334

Rectangle

The Rectangle color scheme consists of four colors that form a rectangle on the color wheel.



4289822594



4289037931



4284061334



4284781229

Sweetspot

The Sweet Spot groups the original color and five complimentary colors.



4289822594



4293317588



4289626033



4285753192



4294111986



4285756275

Same Dimension

The Same Dimension uses a secret algorithm to generate beautiful new colors.



4289822594



4293302172



4289828223



4284043345



4288217097



4279894018

Inverse Universe

The Inverse Universe completely reimagines the original color for something new.



4289822594



4293302172



4286553009



4284043345



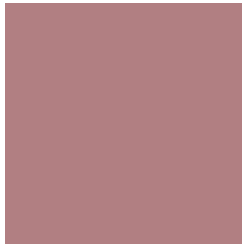
4288217097



4279894018

Previews

White Background



This preview shows how the Android color 4289822594 looks on a white background.

Color Contrast Check

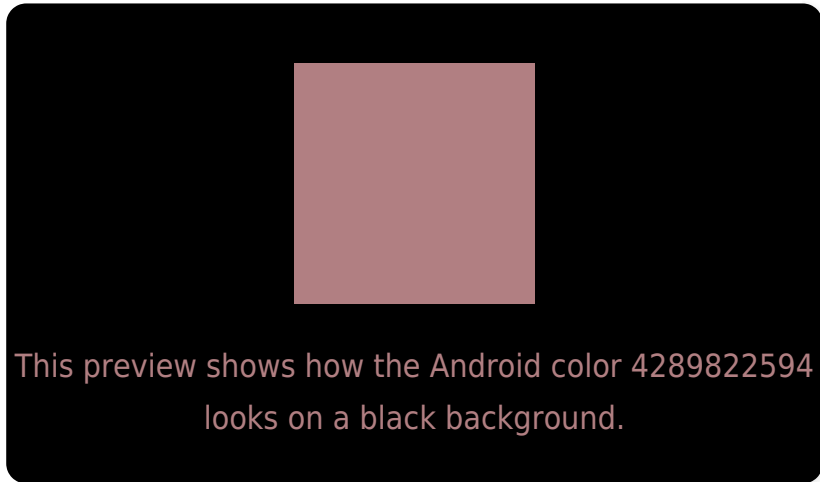
Large Text (above 18pt) WCAG AA ✓ Pass

Any Text WCAG AA ✗ Fail

Large Text (above 18pt) WCAG AAA ✗ Fail

Any Text WCAG AAA ✗ Fail

Black Background



Color Contrast Check

Large Text (above 18pt) WCAG AA ✓ Pass

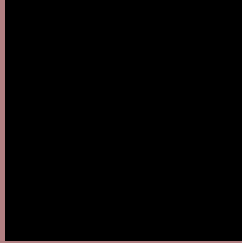
Any Text WCAG AA ✓ Pass

Large Text (above 18pt) WCAG AAA ✓ Pass

Any Text WCAG AAA × Fail

If you want to check with other color combinations, try the [Color Contrast Checker](#).

Android 4289822594 Background



This preview shows how black text looks on a background with the Android color 4289822594.



This preview shows how white text looks on a background with the Android color 4289822594.

Color Blindness Simulation

Color vision deficiency is a very complex topic, and I could not describe the different causes any better than Wikipedia does, so if you want to learn more, you should check out their [article about color blindness](#).

Dichromacy



Original Color
4289822594

Protanopia
4287597449

Deuteranopia
4288579456

Trichromacy



Original Color
4289822594

Protanomaly
4288382854

Deuteranomaly
4289037441

Tritanomaly
4289887878

Monochromacy



Original Color
4289822594

Achromatopsia
4287532686

Achromatomaly
4288383370

CSS Examples

Text

The CSS property to change the color of the text to Android 4289822594 is called "color". The color property can be set on classes, ids or directly on the HTML element.

This example shows how text in the color `rgb(177, 127, 130)` looks like.

```
.text, #text, p{  
    color:rgb(177, 127, 130)  
}
```

If you want to add a text shadow in that color use the text-shadow property, you can generate a text shadow directly with our [CSS Text Shadow Generator](#).

Here you see how black text with a 4 pixel rgb(177, 127, 130) colored shadow looks like.

```
.shadow{ text-shadow: 4px 4px 2px rgb(177, 127, 130) }
```

Border

The CSS property to change the border of an element to Android 4289822594 is called "border". The border property can be set on classes, ids or directly on the HTML element.

This example shows the color as border, it can be applied via the CSS property "border" or "border-color".

```
.border, #border, table{ border:4px solid rgb(177, 127, 130) }
```

If only the border color should be changed use the property `border-color`.

```
.border{ border-color:rgb(177, 127, 130) }
```

If you want to add a box shadow in that color use:

Here you see how a box with a 4 pixel `rgb(177, 127, 130)` colored shadow looks like.

```
.boxshadow{ -moz-box-shadow:4px 4px 4px  
4px rgb(177, 127, 130); -webkit-box-  
shadow:4px 4px 4px 4px rgb(177, 127, 130);  
box-shadow:4px 4px 4px 4px rgb(177, 127,  
130) }
```

Background

The CSS property to change the background color of an element to Android 4289822594 is called "background". The background property can be set on classes, ids or directly on the HTML element.

```
.background, #background, body{  
background: rgb(177, 127, 130) }
```

If only the background color should be changed can be used:

```
.background{ background-color: rgb(177,  
127, 130) }
```

This example shows the color as background, it is applied via the CSS property "background".

To optimize and compress your CSS code, you can use our [online CSS compressor and optimizer](#) based on csstidy. If you want to create a linear or radial gradient as background or border, check our [CSS Gradient Generator](#).

Hey! You found this booklet interesting? Support Converting Colors with the new Membership Option!

The pro membership hides all ads, plus gives you double the colors in the color bucket, and more awesome pro features!

[Learn more, Memberships starting at \\$2.50/m!](#)

**Follow me
on Twitter!**

@ConvertingColor