

Converting Colors

Android(4289826672)

Have a look what the booklet for
Android(4289826672) contains.

Android(4289826672)	3
<i>Conversions</i>	4
<i>Details</i>	6
<i>Harmonies</i>	11
<i>Previews</i>	23
<i>Color Blindness Simulation</i>	26
<i>CSS Examples</i>	29

Color

Android(4289826672)

Conversions

Conversions Part 1

Format	Color
Hex	B18F70
RGB	177, 143, 112
RGB Percent	69%, 56%, 44%
CMY	0.3059, 0.4392, 0.5608
CMYK	0.00, 0.19, 0.37, 0.31
HSL	29°, 29%, 57%
HSV	29°, 37%, 69%
XYZ	30.8786, 30.1619, 19.5236
YIQ	149.6320, 30.2150, -2.4330

Conversions

Conversions Part 2

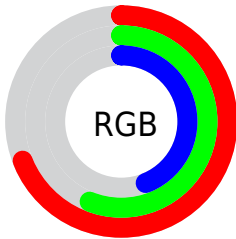
Format	Color
RYB	177, 171, 112
Decimal	11636592
CIELab	61.79, 8.41, 21.35
CIELCh	62, 22.943, 68.506
Yxy	30.1619, 0.3833, 0.3744
Android (android.graphics.Color)	4289826672 (0xFFB18F70)
YUV	149.6320, -18.5526, 24.0017
Hunter-Lab	54.9198, 4.2515, 17.3667

Details

The Android color `4289826672` is a dark color, and the websafe version is hex `CC9966`. A complement of this color would be `4285567665`, and the grayscale version is `4288059030`.

A 20% lighter version of the original color is `4293576100`, and `4286274880` is the 20% darker color. If you saturate the color by 10%, you get `4289824350`, and if you desaturate by 10%, it is `4289828994`.

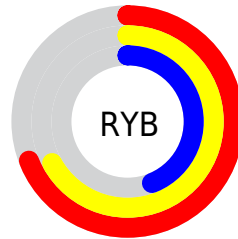
Distribution



Red (69%)

Green (56%)

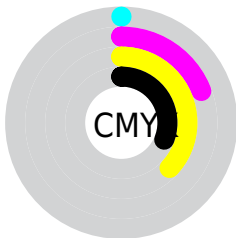
Blue (44%)



Red (69%)

Yellow (67%)

Blue (44%)

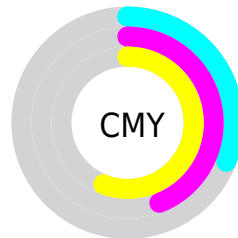


Cyan (0%)

Magenta (19%)

Yellow (37%)

Black (31%)



Cyan (31%)

Magenta (44%)

Yellow (56%)

Brightness & Saturation Gradients

These gradients show how the Android color 4289826672 changes by changing the brightness by 10 percent. The first figure shows a shift by +10% for each color and the second figure -10%.

Similar to the brightness gradients but the following saturation gradients show a change of the Android color 4289826672 by changing the saturation by 10% instead.



4289826672



4289826672

4294967295



4288050519



4293576100



4286274880



4294959551



4284564777



4294966747



4282920724



4294967288



4281408000



4279828480



4278190080



4289826672



4289826672



4289824350



4289828994

■ 4289821773

■ 4289831571

■ 4289819451

■ 4289833893

■ 4289817129

■ 4289836215

■ 4289814807

■ 4289838537

■ 4289812230

■ 4289841114

■ 4289811456

■ 4289843436

■ 4289845758

■ 4289848063

Harmonies

Analogous

The Analogous color harmony consists of three colors that are next to each other on the color wheel.



4290611581



4289826672



4288583277

Triad

The Triadic color harmony groups three colors that are evenly spaced from another and form a triangle on the color wheel.



4289826672



4284391835



4288712373

Complementary

The Complementary color scheme is a pair of colors which are on the opposite of each other on the color wheel.



4289826672



4285567665

Split Complementary

Split-complementary colors differ from the complementary color scheme. The scheme consists of three colors, the original color and two neighbors of the complement color.



4286879165



4289826672



4284129198

Square

The Square scheme is like the rectangle color scheme, but the four colors are evenly spaced on the color wheel.



4289826672



4285636486



4285111226



4290021541

Rectangle

The Rectangle color scheme consists of four colors that form a rectangle on the color wheel.



4289826672



4287666801



4285111226



4288123065

Sweetspot

The Sweet Spot groups the original color and five complimentary colors.



4289826672



4293318860



4289818771



4285754212



4294111986



4285756275

Same Dimension

The Same Dimension uses a secret algorithm to generate beautiful new colors.



4289826672



4293308801



4289834864



4284044624



4288235776



4279897088

Inverse Universe

The Inverse Universe completely reimagines the original color for something new.



4285567665



4286690790



4285559473



4283454809



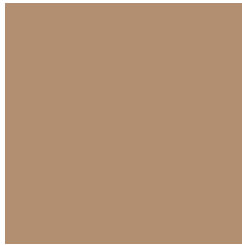
4278210713



4278193434

Previews

White Background



This preview shows how the Android color 4289826672 looks on a white background.

Color Contrast Check

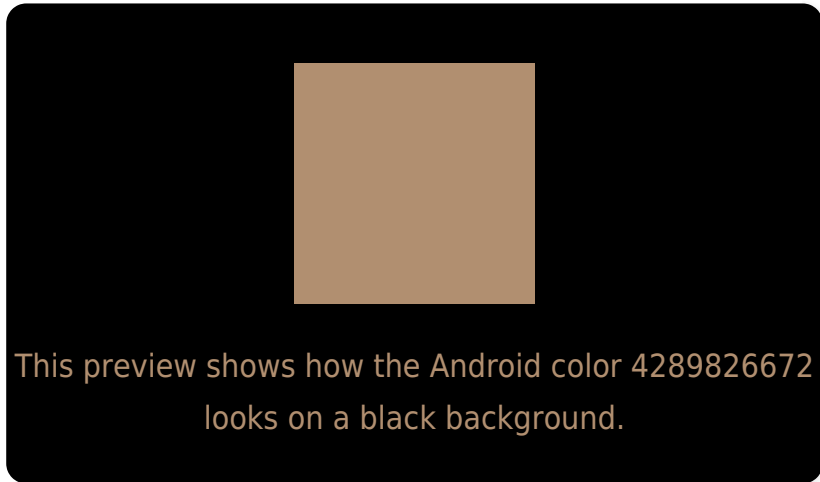
Large Text (above 18pt) WCAG AA × Fail

Any Text WCAG AA × Fail

Large Text (above 18pt) WCAG AAA × Fail

Any Text WCAG AAA × Fail

Black Background



Color Contrast Check

Large Text (above 18pt) WCAG AA ✓ Pass

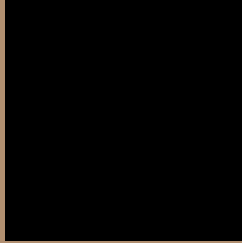
Any Text WCAG AA ✓ Pass

Large Text (above 18pt) WCAG AAA ✓ Pass

Any Text WCAG AAA ✓ Pass

If you want to check with other color combinations, try the [Color Contrast Checker](#).

Android 4289826672 Background



This preview shows how black text looks on a background with the Android color 4289826672.



This preview shows how white text looks on a background with the Android color 4289826672.

Color Blindness Simulation

Color vision deficiency is a very complex topic, and I could not describe the different causes any better than Wikipedia does, so if you want to learn more, you should check out their [article about color blindness](#).

Dichromacy



Original Color

4289826672

Protanopia

4288714099

Deuteranopia

4289761136

Trichromacy



Original Color
4289826672

Protanomaly
4289106802

Deuteranomaly
4289761136

Tritanomaly
4290022536

Monochromacy



Original Color
4289826672

Achromatopsia
4288059030

Achromatomaly
4288713608

CSS Examples

Text

The CSS property to change the color of the text to Android 4289826672 is called "color". The color property can be set on classes, ids or directly on the HTML element.

This example shows how text in the color `rgb(177, 143, 112)` looks like.

```
.text, #text, p{  
    color:rgb(177, 143, 112)  
}
```

If you want to add a text shadow in that color use the text-shadow property, you can generate a text shadow directly with our [CSS Text Shadow Generator](#).

Here you see how black text with a 4 pixel rgb(177, 143, 112) colored shadow looks like.

```
.shadow{ text-shadow: 4px 4px 2px rgb(177, 143, 112) }
```

Border

The CSS property to change the border of an element to Android 4289826672 is called "border". The border property can be set on classes, ids or directly on the HTML element.

This example shows the color as border, it can be applied via the CSS property "border" or "border-color".

```
.border, #border, table{ border:4px solid rgb(177, 143, 112) }
```

If only the border color should be changed use the property `border-color`.

```
.border{ border-color:rgb(177, 143, 112) }
```

If you want to add a box shadow in that color use:

Here you see how a box with a 4 pixel `rgb(177, 143, 112)` colored shadow looks like.

```
.boxshadow{ -moz-box-shadow:4px 4px 4px  
4px rgb(177, 143, 112); -webkit-box-  
shadow:4px 4px 4px 4px rgb(177, 143, 112);  
box-shadow:4px 4px 4px 4px rgb(177, 143,  
112) }
```

Background

The CSS property to change the background color of an element to Android 4289826672 is called "background". The background property can be set on classes, ids or directly on the HTML element.

```
.background, #background, body{  
background: rgb(177, 143, 112) }
```

If only the background color should be changed can be used:

```
.background{ background-color: rgb(177,  
143, 112) }
```

This example shows the color as background, it is applied via the CSS property "background".

To optimize and compress your CSS code, you can use our [online CSS compressor and optimizer](#) based on csstidy. If you want to create a linear or radial gradient as background or border, check our [CSS Gradient Generator](#).

Hey! You found this booklet interesting? Support Converting Colors with the new Membership Option!

The pro membership hides all ads, plus gives you double the colors in the color bucket, and more awesome pro features!

[Learn more, Memberships starting at \\$2.50/m!](#)

**Follow me
on Twitter!**

@ConvertingColor