

Converting Colors

Android(4289828502)

Have a look what the booklet for
Android(4289828502) contains.

Android(4289828502)	3
<i>Conversions</i>	4
<i>Details</i>	6
<i>Harmonies</i>	11
<i>Previews</i>	23
<i>Color Blindness Simulation</i>	26
<i>CSS Examples</i>	29

Color

Android(4289828502)

Conversions

Conversions Part 1

Format	Color
Hex	B19696
RGB	177, 150, 150
RGB Percent	69%, 59%, 59%
CMY	0.3059, 0.4118, 0.4118
CMYK	0.00, 0.15, 0.15, 0.31
HSL	0°, 15%, 64%
HSV	0°, 15%, 69%
XYZ	34.5428, 33.3618, 33.4730
YIQ	158.0730, 16.0920, 5.7240

Conversions

Conversions Part 2

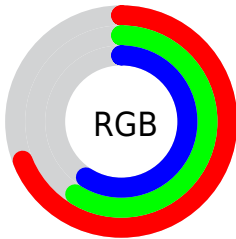
Format	Color
RYB	177, 150, 150
Decimal	11638422
CIELab	64.45, 10.04, 3.73
CIELCh	64, 10.706, 20.389
Yxy	33.3618, 0.3407, 0.3291
Android (android.graphics.Color)	4289828502 (0xFFB19696)
YUV	158.0730, -3.9800, 16.5990
Hunter-Lab	57.7597, 5.6714, 6.0719

Details

The Android color `4289828502` is a light color, and the websafe version is hex `CC9999`. A complement of this color would be `4288065969`, and the grayscale version is `4288585374`.

A 20% lighter version of the original color is `4293512396`, and `4286341987` is the 20% darker color. If you saturate the color by 10%, you get `4289823876`, and if you desaturate by 10%, it is `4289833128`.

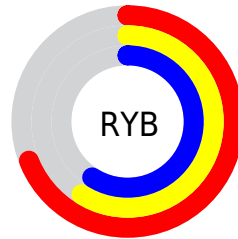
Distribution



Red (69%)

Green (59%)

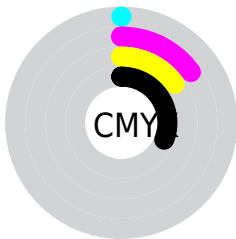
Blue (59%)



Red (69%)

Yellow (59%)

Blue (59%)

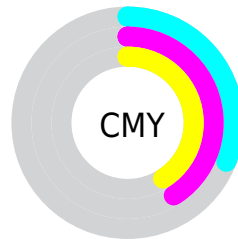


Cyan (0%)

Magenta (15%)

Yellow (15%)

Black (31%)



Cyan (31%)

Magenta (41%)

Yellow (41%)

Brightness & Saturation Gradients

These gradients show how the Android color 4289828502 changes by changing the brightness by 10 percent. The first figure shows a shift by +10% for each color and the second figure -10%.

Similar to the brightness gradients but the following saturation gradients show a change of the Android color 4289828502 by changing the saturation by 10% instead.



4289828502



4289828502

4294967295



4288052348



4293512396



4286341987



4294961384



4284697419



4283118901



4281605920



4280289288



4278190080



4289828502



4289828502



4289823876



4289833128

 4289819507

 4289837497

 4289814881

 4289842123

 4289810255

 4289846749

 4289805886

 4289851118

 4289801260

 4289855487

 4289796634

 4289792008

 4289789952

Harmonies

Analogous

The Analogous color harmony consists of three colors that are next to each other on the color wheel.



4289631904



4289828502



4289632398

Triad

The Triadic color harmony groups three colors that are evenly spaced from another and form a triangle on the color wheel.



4289828502



4287799440



4287602351

Complementary

The Complementary color scheme is a pair of colors which are on the opposite of each other on the color wheel.



4289828502



4288065969

Split Complementary

Split-complementary colors differ from the complementary color scheme. The scheme consists of three colors, the original color and two neighbors of the complement color.



4287013291



4289828502



4287210137

Square

The Square scheme is like the rectangle color scheme, but the four colors are evenly spaced on the color wheel.



4289828502



4288519818



4286882467



4288322478

Rectangle

The Rectangle color scheme consists of four colors that form a rectangle on the color wheel.



4289828502



4289370763



4286882467



4287340462

Sweetspot

The Sweet Spot groups the original color and five complimentary colors.



4289828502



4293319386



4289828529



4285754476



4294111986



4285756275

Same Dimension

The Same Dimension uses a secret algorithm to generate beautiful new colors.



4289828502



4293311676



4289831830



4284043344



4288217088



4279894016

Inverse Universe

The Inverse Universe completely reimagines the original color for something new.



4288065969



4290569958



4288062385



4283455833



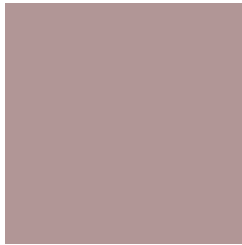
4278229401



4278196762

Previews

White Background



This preview shows how the Android color 4289828502 looks on a white background.

Color Contrast Check

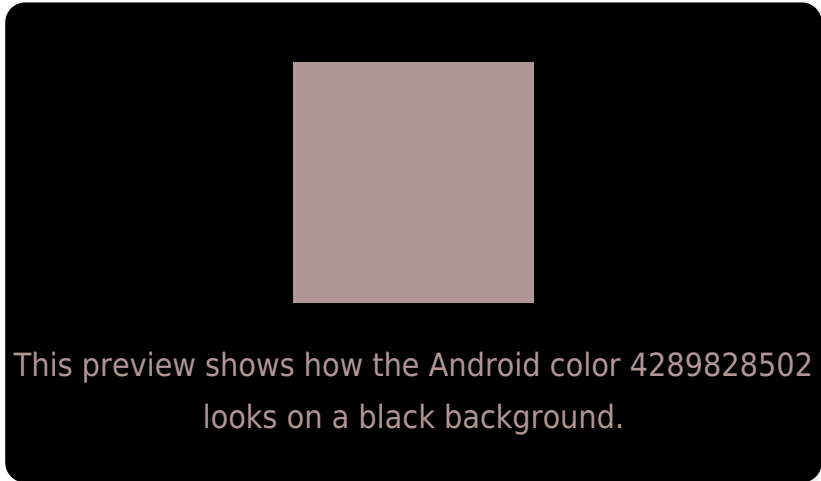
Large Text (above 18pt) WCAG AA × Fail

Any Text WCAG AA × Fail

Large Text (above 18pt) WCAG AAA × Fail

Any Text WCAG AAA × Fail

Black Background



Color Contrast Check

Large Text (above 18pt) WCAG AA ✓ Pass

Any Text WCAG AA ✓ Pass

Large Text (above 18pt) WCAG AAA ✓ Pass

Any Text WCAG AAA ✓ Pass

If you want to check with other color combinations, try the [Color Contrast Checker](#).

Android 4289828502 Background



This preview shows how black text looks on a background with the Android color 4289828502.



This preview shows how white text looks on a background with the Android color 4289828502.

Color Blindness Simulation

Color vision deficiency is a very complex topic, and I could not describe the different causes any better than Wikipedia does, so if you want to learn more, you should check out their [article about color blindness](#).

Dichromacy



Original Color
4289828502

Protanopia
4288715929

Deuteranopia
4289632150



Tritanopia
4289893536

Trichromacy



Original Color
4289828502

Protanomaly
4289108632

Deuteranomaly
4289697686

Tritanomaly
4289893788

Monochromacy



Original Color
4289828502

Achromatopsia
4288585374

Achromatomaly
4289043355

CSS Examples

Text

The CSS property to change the color of the text to Android 4289828502 is called "color". The color property can be set on classes, ids or directly on the HTML element.

This example shows how text in the color `rgb(177, 150, 150)` looks like.

```
.text, #text, p{  
    color:rgb(177, 150, 150)  
}
```

If you want to add a text shadow in that color use the text-shadow property, you can generate a text shadow directly with our [CSS Text Shadow Generator](#).

Here you see how black text with a 4 pixel rgb(177, 150, 150) colored shadow looks like.

```
.shadow{ text-shadow: 4px 4px 2px rgb(177, 150, 150) }
```

Border

The CSS property to change the border of an element to Android 4289828502 is called "border". The border property can be set on classes, ids or directly on the HTML element.

This example shows the color as border, it can be applied via the CSS property "border" or "border-color".

```
.border, #border, table{ border:4px solid rgb(177, 150, 150) }
```

If only the border color should be changed use the property `border-color`.

```
.border{ border-color:rgb(177, 150, 150) }
```

If you want to add a box shadow in that color use:

Here you see how a box with a 4 pixel `rgb(177, 150, 150)` colored shadow looks like.

```
.boxshadow{ -moz-box-shadow:4px 4px 4px  
4px rgb(177, 150, 150); -webkit-box-  
shadow:4px 4px 4px 4px rgb(177, 150, 150);  
box-shadow:4px 4px 4px 4px rgb(177, 150,  
150) }
```

Background

The CSS property to change the background color of an element to Android 4289828502 is called "background". The background property can be set on classes, ids or directly on the HTML element.

```
.background, #background, body{  
background: rgb(177, 150, 150) }
```

If only the background color should be changed can be used:

```
.background{ background-color: rgb(177,  
150, 150) }
```

This example shows the color as background, it is applied via the CSS property "background".

To optimize and compress your CSS code, you can use our [online CSS compressor and optimizer](#) based on csstidy. If you want to create a linear or radial gradient as background or border, check our [CSS Gradient Generator](#).

Hey! You found this booklet interesting? Support Converting Colors with the new Membership Option!

The pro membership hides all ads, plus gives you double the colors in the color bucket, and more awesome pro features!

[Learn more, Memberships starting at \\$2.50/m!](#)

**Follow me
on Twitter!**

@ConvertingColor