

Converting Colors

Android(4289884544)

Have a look what the booklet for
Android(4289884544) contains.

| | |
|------------------------------------------------|----|
| Android(4289884544) | 3 |
| <i>Conversions</i> | 4 |
| <i>Details</i> | 6 |
| <i>Harmonies</i> | 11 |
| <i>Previews</i> | 23 |
| <i>Color Blindness Simulation</i> | 26 |
| <i>CSS Examples</i> | 29 |

Color

Android(4289884544)

Conversions

Conversions Part 1

| Format | Color |
|---------------|-----------------------------------|
| Hex | B27180 |
| RGB | 178, 113, 128 |
| RGB Percent | 70%, 44%, 50% |
| CMY | 0.3020, 0.5569, 0.4980 |
| CMYK | 0.00, 0.37, 0.28, 0.30 |
| HSL | 346°, 30%, 57% |
| HSV | 346°, 37%, 70% |
| XYZ | 28.1615, 22.8337, 23.3452 |
| YIQ | 134.1450, 33.9250, 18.4450 |

Conversions

Conversions Part 2

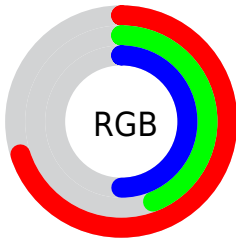
| Format | Color |
|-------------------------------------|-------------------------------|
| R_{YB} | 178, 113, 128 |
| Decimal | 11694464 |
| CIE _{Lab} | 54.90, 27.72, 2.54 |
| CIE _{LCh} | 55, 27.841, 5.231 |
| Yxy | 22.8337, 0.3788, 0.3072 |
| Android (android.graphics.Color) | 4289884544 (0xFFB27180) |
| YUV | 134.1450, -3.0295, 38.4608 |
| Hunter-Lab | 47.7847, 21.5744, 4.4832 |

Details

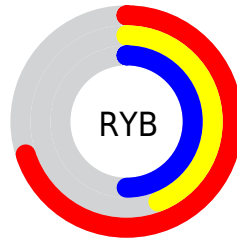
The Android color `4289884544` is a dark color, and the websafe version is hex `996666`. A complement of this color would be `4285641379`, and the grayscale version is `4287006342`.

A 20% lighter version of the original color is `4293633717`, and `4286333007` is the 20% darker color. If you saturate the color by 10%, you get `4289879922`, and if you desaturate by 10%, it is `4289889166`.

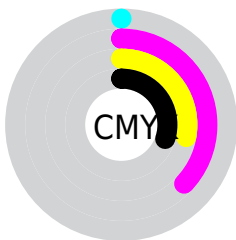
Distribution



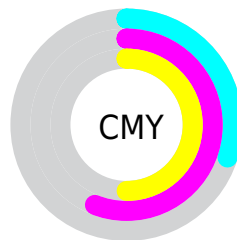
- Red (70%)
- Green (44%)
- Blue (50%)



- Red (70%)
- Yellow (44%)
- Blue (50%)



- Cyan (0%)
- Magenta (37%)
- Yellow (28%)
- Black (30%)



- Cyan (30%)
- Magenta (56%)
- Yellow (50%)

Brightness & Saturation Gradients

These gradients show how the Android color 4289884544 changes by changing the brightness by 10 percent. The first figure shows a shift by +10% for each color and the second figure -10%.

Similar to the brightness gradients but the following saturation gradients show a change of the Android color 4289884544 by changing the saturation by 10% instead.



4289884544



4289884544

4294967295



4288043111



4293633717



4286333007



4294951376



4284557368



4294958572



4282913059



4294966015



4281335821



4279107584



4278190080



4289884544



4289884544



4289879922



4289889166

 4289875301

 4289893787

 4289870935

 4289898153

 4289866313

 4289902775

 4289861692

 4289907396

 4289857070

 4289912018

 4289855529

 4289916640

 4289921006

 4289921019

Harmonies

Analogous

The Analogous color harmony consists of three colors that are next to each other on the color wheel.



4289033368



4289884544



4289819753

Triad

The Triadic color harmony groups three colors that are evenly spaced from another and form a triangle on the color wheel.



4289884544



4285958747



4282616751

Complementary

The Complementary color scheme is a pair of colors which are on the opposite of each other on the color wheel.



4289884544



4285641379

Split Complementary

Split-complementary colors differ from the complementary color scheme. The scheme consists of three colors, the original color and two neighbors of the complement color.



4281241502



4289884544



4284059502

Square

The Square scheme is like the rectangle color scheme, but the four colors are evenly spaced on the color wheel.



4289884544



4287660883



4282159495



4285105331

Rectangle

The Rectangle color scheme consists of four colors that form a rectangle on the color wheel.



4289884544



4289362013



4282159495



4281961898

Sweetspot

The Sweet Spot groups the original color and five complimentary colors.



4289884544



4293447636



4288901554



4285884010



4294309365



4285887861

Same Dimension

The Same Dimension uses a secret algorithm to generate beautiful new colors.



4289884544



4293427866



4289888881



4284043346



4288217123



4279894022

Inverse Universe

The Inverse Universe completely reimagines the original color for something new.



4289884544



4293427866



4285637042



4284043346



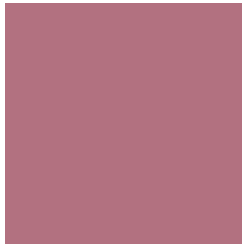
4288217123



4279894022

Previews

White Background



This preview shows how the Android color 4289884544 looks on a white background.

Color Contrast Check

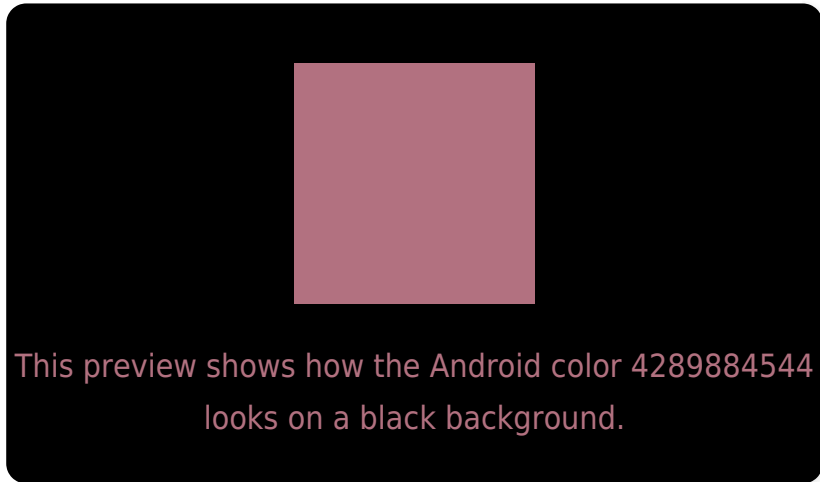
Large Text (above 18pt) WCAG AA ✓ Pass

Any Text WCAG AA ✗ Fail

Large Text (above 18pt) WCAG AAA ✗ Fail

Any Text WCAG AAA ✗ Fail

Black Background



Color Contrast Check

Large Text (above 18pt) WCAG AA ✓ Pass

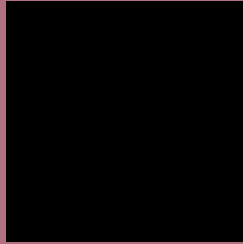
Any Text WCAG AA ✓ Pass

Large Text (above 18pt) WCAG AAA ✓ Pass

Any Text WCAG AAA × Fail

If you want to check with other color combinations, try the [Color Contrast Checker](#).

Android 4289884544 Background



This preview shows how black text looks on a background with the Android color 4289884544.



This preview shows how white text looks on a background with the Android color 4289884544.

Color Blindness Simulation

Color vision deficiency is a very complex topic, and I could not describe the different causes any better than Wikipedia does, so if you want to learn more, you should check out their [article about color blindness](#).

Dichromacy



Trichromacy



Original Color
4289884544

Protanomaly
4287986822

Deuteranomaly
4288576126

Tritanomaly
4289819260

Monochromacy



Original Color
4289884544

Achromatopsia
4287006342

Achromatomaly
4288052868

CSS Examples

Text

The CSS property to change the color of the text to Android 4289884544 is called "color". The color property can be set on classes, ids or directly on the HTML element.

This example shows how text in the color `rgb(178, 113, 128)` looks like.

```
.text, #text, p{  
    color:rgb(178, 113, 128)  
}
```

If you want to add a text shadow in that color use the text-shadow property, you can generate a text shadow directly with our [CSS Text Shadow Generator](#).

Here you see how black text with a 4 pixel rgb(178, 113, 128) colored shadow looks like.

```
.shadow{ text-shadow: 4px 4px 2px rgb(178, 113, 128) }
```

Border

The CSS property to change the border of an element to Android 4289884544 is called "border". The border property can be set on classes, ids or directly on the HTML element.

This example shows the color as border, it can be applied via the CSS property "border" or "border-color".

```
.border, #border, table{ border:4px solid rgb(178, 113, 128) }
```

If only the border color should be changed use the property `border-color`.

```
.border{ border-color:rgb(178, 113, 128) }
```

If you want to add a box shadow in that color use:

Here you see how a box with a 4 pixel `rgb(178, 113, 128)` colored shadow looks like.

```
.boxshadow{ -moz-box-shadow:4px 4px 4px  
4px rgb(178, 113, 128); -webkit-box-  
shadow:4px 4px 4px 4px rgb(178, 113, 128);  
box-shadow:4px 4px 4px 4px rgb(178, 113,  
128) }
```

Background

The CSS property to change the background color of an element to Android 4289884544 is called "background". The background property can be set on classes, ids or directly on the HTML element.

```
.background, #background, body{  
background: rgb(178, 113, 128) }
```

If only the background color should be changed can be used:

```
.background{ background-color: rgb(178,  
113, 128) }
```

This example shows the color as background, it is applied via the CSS property "background".

To optimize and compress your CSS code, you can use our [online CSS compressor and optimizer](#) based on csstidy. If you want to create a linear or radial gradient as background or border, check our [CSS Gradient Generator](#).

Hey! You found this booklet interesting? Support Converting Colors with the new Membership Option!

The pro membership hides all ads, plus gives you double the colors in the color bucket, and more awesome pro features!

[Learn more, Memberships starting at \\$2.50/m!](#)

**Follow me
on Twitter!**

@ConvertingColor