

Converting Colors

Android(4289888897)

Have a look what the booklet for
Android(4289888897) contains.

Android(4289888897)	3
<i>Conversions</i>	4
<i>Details</i>	6
<i>Harmonies</i>	11
<i>Previews</i>	23
<i>Color Blindness Simulation</i>	26
<i>CSS Examples</i>	29

Color

Android(4289888897)

Conversions

Conversions Part 1

Format	Color
Hex	B28281
RGB	178, 130, 129
RGB Percent	70%, 51%, 51%
CMY	0.3020, 0.4902, 0.4941
CMYK	0.00, 0.27, 0.28, 0.30
HSL	1°, 24%, 60%
HSV	1°, 28%, 70%
XYZ	30.3052, 27.0152, 24.3861
YIQ	144.2380, 28.9290, 9.8650

Conversions

Conversions Part 2

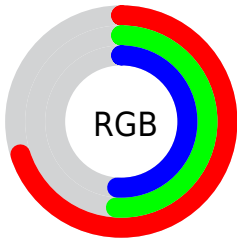
Format	Color
RYB	178, 130, 129
Decimal	11698817
CIELab	58.99, 18.36, 7.83
CIELCh	59, 19.958, 23.108
Yxy	27.0152, 0.3709, 0.3306
Android (android.graphics.Color)	4289888897 (0xFFB28281)
YUV	144.2380, -7.5123, 29.6093
Hunter-Lab	51.9762, 13.1178, 8.5657

Details

The Android color `4289888897` is a light color, and the websafe version is hex `CC9999`. A complement of this color would be `4286689714`, and the grayscale version is `4287664272`.

A 20% lighter version of the original color is `4293638070`, and `4286337104` is the 20% darker color. If you saturate the color by 10%, you get `4289884527`, and if you desaturate by 10%, it is `4289893267`.

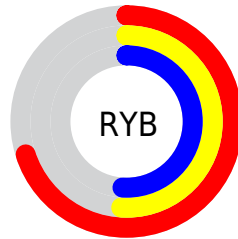
Distribution



Red (70%)

Green (51%)

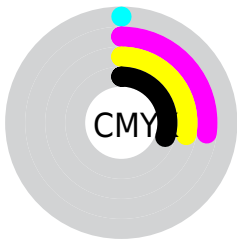
Blue (51%)



Red (70%)

Yellow (51%)

Blue (51%)

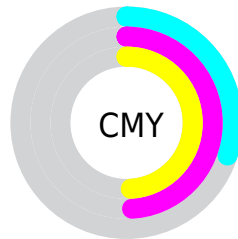


Cyan (0%)

Magenta (27%)

Yellow (28%)

Black (30%)



Cyan (30%)

Magenta (49%)

Yellow (49%)

Brightness & Saturation Gradients

These gradients show how the Android color #4289888897 changes by changing the brightness by 10 percent. The first figure shows a shift by +10% for each color and the second figure -10%.

Similar to the brightness gradients but the following saturation gradients show a change of the Android color #4289888897 by changing the saturation by 10% instead.



4289888897



4289888897

4294967295



4288113000



4293638070



4286337104



4294955985



4284627257



4294963182



4282983204



4281470478



4279959553



4278190080



4289888897



4289888897



4289884527



4289893267

 4289879901

 4289897893

 4289875532

 4289902262

 4289870906

 4289906888

 4289866536

 4289911258

 4289861910

 4289915884

 4289857540

 4289920254

 4289856512

 4289921023

Harmonies

Analogous

The Analogous color harmony consists of three colors that are next to each other on the color wheel.



4289626771



4289888897



4289496691

Triad

The Triadic color harmony groups three colors that are evenly spaced from another and form a triangle on the color wheel.



4289888897



4286158200



4285829552

Complementary

The Complementary color scheme is a pair of colors which are on the opposite of each other on the color wheel.



428988897



4286689714

Split Complementary

Split-complementary colors differ from the complementary color scheme. The scheme consists of three colors, the original color and two neighbors of the complement color.



4284585385



4289888897



4284979337

Square

The Square scheme is like the rectangle color scheme, but the four colors are evenly spaced on the color wheel.



4289888897



4287467886



4284258459



4287400878

Rectangle

The Rectangle color scheme consists of four colors that form a rectangle on the color wheel.



4289888897



4288973165



4284258459



4285305519

Sweetspot

The Sweet Spot groups the original color and five complimentary colors.



4289888897



4293449429



4289888689



4285885034



4294309365



4285887861

Same Dimension

The Same Dimension uses a secret algorithm to generate beautiful new colors.



4289888897



4293434779



4289895041



4284043600



4288217856



4279894272

Inverse Universe

The Inverse Universe completely reimagines the original color for something new.



4286689714



4288407272



4286683570



4283455833



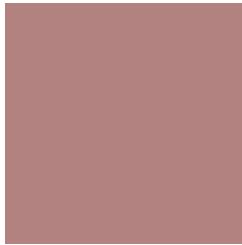
4278228633



4278196506

Previews

White Background



This preview shows how the Android color 4289888897 looks on a white background.

Color Contrast Check

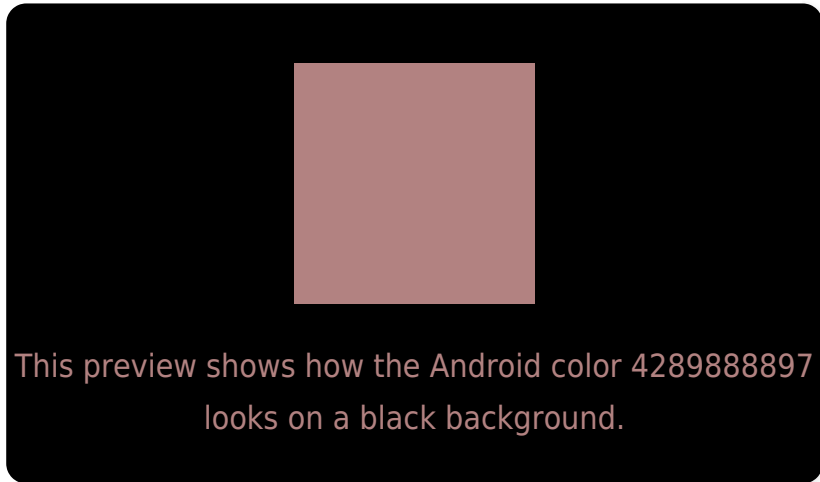
Large Text (above 18pt) WCAG AA ✓ Pass

Any Text WCAG AA ✗ Fail

Large Text (above 18pt) WCAG AAA ✗ Fail

Any Text WCAG AAA ✗ Fail

Black Background



Color Contrast Check

Large Text (above 18pt) WCAG AA ✓ Pass

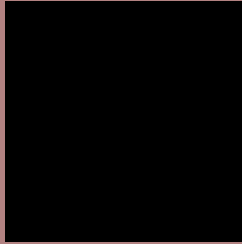
Any Text WCAG AA ✓ Pass

Large Text (above 18pt) WCAG AAA ✓ Pass

Any Text WCAG AAA × Fail

If you want to check with other color combinations, try the [Color Contrast Checker](#).

Android 4289888897 Background



This preview shows how black text looks on a background with the Android color 4289888897.



This preview shows how white text looks on a background with the Android color 4289888897.

Color Blindness Simulation

Color vision deficiency is a very complex topic, and I could not describe the different causes any better than Wikipedia does, so if you want to learn more, you should check out their [article about color blindness](#).

Dichromacy



Original Color


4289888897

Protanopia

4287794823

Deuteranopia

4288776576



Tritanopia
4289954186

Trichromacy



Original Color
4289888897

Protanomaly
4288580229

Deuteranomaly
4289169024

Tritanomaly
4289954183

Monochromacy



Original Color
4289888897

Achromatopsia
4287664272

Achromatomaly
4288449419

CSS Examples

Text

The CSS property to change the color of the text to Android 4289888897 is called "color". The color property can be set on classes, ids or directly on the HTML element.

This example shows how text in the color `rgb(178, 130, 129)` looks like.

```
.text, #text, p{  
    color:rgb(178, 130, 129)  
}
```

If you want to add a text shadow in that color use the text-shadow property, you can generate a text shadow directly with our [CSS Text Shadow Generator](#).

Here you see how black text with a 4 pixel rgb(178, 130, 129) colored shadow looks like.

```
.shadow{ text-shadow: 4px 4px 2px rgb(178, 130, 129) }
```

Border

The CSS property to change the border of an element to Android 4289888897 is called "border". The border property can be set on classes, ids or directly on the HTML element.

This example shows the color as border, it can be applied via the CSS property "border" or "border-color".

```
.border, #border, table{ border:4px solid rgb(178, 130, 129) }
```

If only the border color should be changed use the property `border-color`.

```
.border{ border-color:rgb(178, 130, 129) }
```

If you want to add a box shadow in that color use:

Here you see how a box with a 4 pixel `rgb(178, 130, 129)` colored shadow looks like.

```
.boxshadow{ -moz-box-shadow:4px 4px 4px 4px rgb(178, 130, 129); -webkit-box-shadow:4px 4px 4px 4px rgb(178, 130, 129); box-shadow:4px 4px 4px 4px rgb(178, 130, 129) }
```

Background

The CSS property to change the background color of an element to Android 4289888897 is called "background". The background property can be set on classes, ids or directly on the HTML element.

```
.background, #background, body{  
background: rgb(178, 130, 129) }
```

If only the background color should be changed can be used:

```
.background{ background-color: rgb(178,  
130, 129) }
```

This example shows the color as background, it is applied via the CSS property "background".

To optimize and compress your CSS code, you can use our [online CSS compressor and optimizer](#) based on csstidy. If you want to create a linear or radial gradient as background or border, check our [CSS Gradient Generator](#).

Hey! You found this booklet interesting? Support Converting Colors with the new Membership Option!

The pro membership hides all ads, plus gives you double the colors in the color bucket, and more awesome pro features!

[Learn more, Memberships starting at \\$2.50/m!](#)

**Follow me
on Twitter!**

@ConvertingColor