

# Converting Colors

Android(4289889111)

Have a look what the booklet for  
Android(4289889111) contains.

<b>Android(4289889111)</b> .....	3
<b><i>Conversions</i></b> .....	4
<b><i>Details</i></b> .....	6
<b><i>Harmonies</i></b> .....	11
<b><i>Previews</i></b> .....	23
<b><i>Color Blindness Simulation</i></b> .....	26
<b><i>CSS Examples</i></b> .....	29

# Color

**Android(4289889111)**

# Conversions

## Conversions Part 1

<b>Format</b>	<b>Color</b>
Hex	B28357
RGB	178, 131, 87
RGB Percent	70%, 51%, 34%
CMY	0.3020, 0.4863, 0.6588
CMYK	0.00, 0.26, 0.51, 0.30
HSL	29°, 37%, 52%
HSV	29°, 51%, 70%
XYZ	28.1967, 26.3857, 12.6236
YIQ	140.0370, 42.1360, -3.7200

# Conversions

## Conversions Part 2

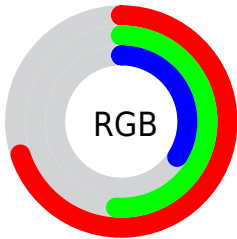
<b>Format</b>	<b>Color</b>
<b>RYB</b>	178, 172, 87
Decimal	11699031
CIELab	58.40, 12.77, 30.76
CIELCh	58, 33.303, 67.444
Yxy	26.3857, 0.4196, 0.3926
Android (android.graphics.Color)	4289889111 (0xFFB28357)
YUV	140.0370, -26.1472, 33.2936
Hunter-Lab	51.3670, 8.0911, 21.3862

# Details

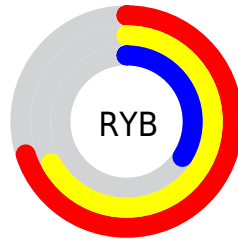
The Android color **4289889111** is a dark color, and the websafe version is hex **CC9966**. A complement of this color would be **4283926194**, and the grayscale version is **4287401100**.

A 20% lighter version of the original color is **4293703818**, and **4286272040** is the 20% darker color. If you saturate the color by 10%, you get **4289886789**, and if you desaturate by 10%, it is **4289891433**.

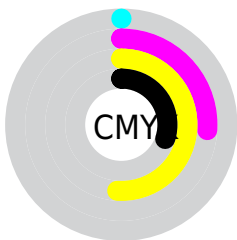
# Distribution



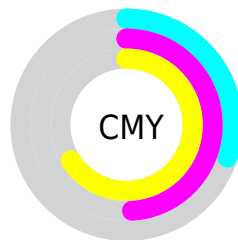
- Red (70%)
- Green (51%)
- Blue (34%)



- Red (70%)
- Yellow (67%)
- Blue (34%)



- Cyan (0%)
- Magenta (26%)
- Yellow (51%)
- Black (30%)



- Cyan (30%)
- Magenta (49%)
- Yellow (66%)

# Brightness & Saturation Gradients

These gradients show how the Android color 4289889111 changes by changing the brightness by 10 percent. The first figure shows a shift by +10% for each color and the second figure -10%.

Similar to the brightness gradients but the following saturation gradients show a change of the Android color 4289889111 by changing the saturation by 10% instead.





4289889111



4289889111

4294967295



4288047679



4293703818



4286272040



4294956196



4284496658



4294963391



4282852608



4294967259



4281143296



4294967288



4279173120



4278190080



4289889111



4289889111



4289886789



4289891433

4289884467

4289893755

4289881890

4289896332

4289879568

4289898654

4289877504

4289900976

4289903298

4289905620

4289908197

4289910519

# Harmonies

## Analogous

The Analogous color harmony consists of three colors that are next to each other on the color wheel.



4290935402



4289889111



4288187730

# Triad

The Triadic color harmony groups three colors that are evenly spaced from another and form a triangle on the color wheel.



4289889111



4280982675



4288250555

# Complementary

The Complementary color scheme is a pair of colors which are on the opposite of each other on the color wheel.



4289889111



4283926194

# Split Complementary

Split-complementary colors differ from the complementary color scheme. The scheme consists of three colors, the original color and two neighbors of the complement color.



4285435334



4289889111



4278229935

# Square

The Square scheme is like the rectangle color scheme, but the four colors are evenly spaced on the color wheel.



4289889111



4283800181



4281963970



4290214307

# Rectangle

The Rectangle color scheme consists of four colors that form a rectangle on the color wheel.



4289889111



4286878552



4281963970



4287399616



# Sweetspot

The Sweet Spot groups the original color and five complimentary colors.



4289889111



4293449413



4289877894



4285885024



4294309365



4285887861



# Same Dimension

The Same Dimension uses a secret algorithm to generate beautiful new colors.



4289889111



4293435226



4289900631



4284044624



4288236032



4279897088



# Inverse Universe

The Inverse Universe completely reimagines the original color for something new.



4283926194



4284130536



4283914674



4283454809



4278210457

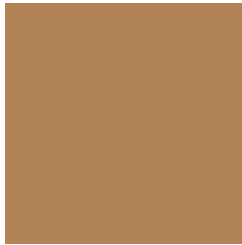


4278193434



# Previews

## White Background



This preview shows how the Android color 4289889111 looks on a white background.

## Color Contrast Check

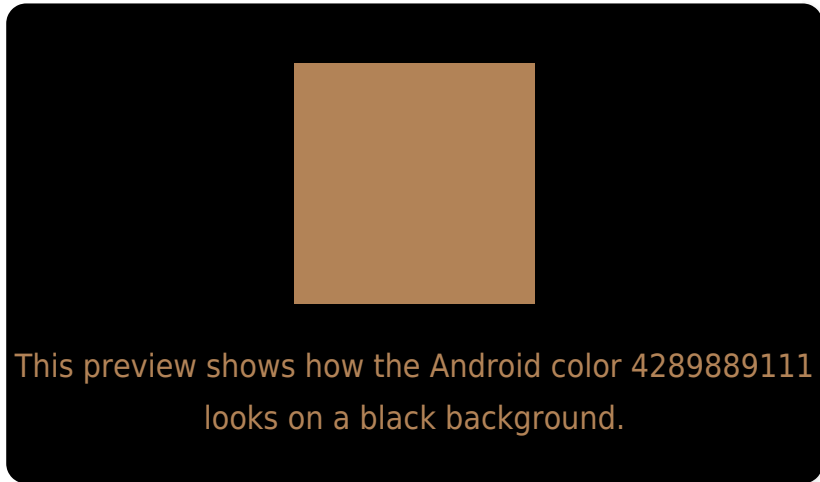
Large Text (above 18pt) WCAG AA ✓ Pass

Any Text WCAG AA ✗ Fail

Large Text (above 18pt) WCAG AAA ✗ Fail

Any Text WCAG AAA ✗ Fail

# Black Background



## Color Contrast Check

Large Text (above 18pt) WCAG AA ✓ Pass

Any Text WCAG AA ✓ Pass

Large Text (above 18pt) WCAG AAA ✓ Pass

Any Text WCAG AAA × Fail

If you want to check with other color combinations, try the [Color Contrast Checker](#).



# Android 4289889111 Background



This preview shows how black text looks on a background with the Android color 4289889111.



This preview shows how white text looks on a background with the Android color 4289889111.

# Color Blindness Simulation

Color vision deficiency is a very complex topic, and I could not describe the different causes any better than Wikipedia does, so if you want to learn more, you should check out their [article about color blindness](#).


## Dichromacy



**Original Color**  
4289889111

**Protanopia**  
4288253275

**Deuteranopia**  
4289365590



**Tritanopia**  
4290149767

# Trichromacy



**Original Color**  
4289889111

**Protanomaly**  
4288842074

**Deuteranomaly**  
4289561942

**Tritanomaly**  
4290084726

# Monochromacy



**Original Color**  
4289889111

**Achromatopsia**  
4287401100

**Achromatomaly**  
4288317817

# CSS Examples

## Text

The CSS property to change the color of the text to Android 4289889111 is called "color". The color property can be set on classes, ids or directly on the HTML element.

This example shows how text in the color `rgb(178, 131, 87)` looks like.

```
.text, #text, p{  
    color:rgb(178, 131, 87)  
}
```

If you want to add a text shadow in that color use the text-shadow property, you can generate a text shadow directly with our [CSS Text Shadow Generator](#).

Here you see how black text with a 4 pixel rgb(178, 131, 87) colored shadow looks like.

```
.shadow{ text-shadow: 4px 4px 2px rgb(178, 131, 87) }
```

## Border

The CSS property to change the border of an element to Android 4289889111 is called "border". The border property can be set on classes, ids or directly on the HTML element.

This example shows the color as border, it can be applied via the CSS property "border" or "border-color".

```
.border, #border, table{ border:4px solid rgb(178, 131, 87) }
```

If only the border color should be changed use the property border-color.

```
.border{ border-color:rgb(178, 131, 87) }
```

If you want to add a box shadow in that color use:

Here you see how a box with a 4 pixel rgb(178, 131, 87) colored shadow looks like.

```
.boxshadow{ -moz-box-shadow:4px 4px 4px  
4px rgb(178, 131, 87); -webkit-box-  
shadow:4px 4px 4px 4px rgb(178, 131, 87);  
box-shadow:4px 4px 4px 4px rgb(178, 131,  
87) }
```

# Background

The CSS property to change the background color of an element to Android 4289889111 is called "background". The background property can be set on classes, ids or directly on the HTML element.

```
.background, #background, body{  
background: rgb(178, 131, 87) }
```

If only the background color should be changed can be used:

```
.background{ background-color: rgb(178,  
131, 87) }
```

This example shows the color as background, it is applied via the CSS property "background".

To optimize and compress your CSS code, you can use our [online CSS compressor and optimizer](#) based on csstidy. If you want to create a linear or radial gradient as background or border, check our [CSS Gradient Generator](#).



Hey! You found this booklet interesting? Support Converting Colors with the new Membership Option!

The pro membership hides all ads, plus gives you double the colors in the color bucket, and more awesome pro features!

**[Learn more, Memberships starting at \\$2.50/m!](#)**

**Follow me  
on Twitter!**

@ConvertingColor