

Converting Colors

Android(4289889421)

Have a look what the booklet for
Android(4289889421) contains.

Android(4289889421)	3
<i>Conversions</i>	4
<i>Details</i>	6
<i>Harmonies</i>	11
<i>Previews</i>	23
<i>Color Blindness Simulation</i>	26
<i>CSS Examples</i>	29

Color

Android(4289889421)

Conversions

Conversions Part 1

Format	Color
Hex	B2848D
RGB	178, 132, 141
RGB Percent	70%, 52%, 55%
CMY	0.3020, 0.4824, 0.4471
CMYK	0.00, 0.26, 0.21, 0.30
HSL	348°, 23%, 61%
HSV	348°, 26%, 70%
XYZ	31.4191, 27.8906, 28.9268
YIQ	146.7800, 24.5270, 12.5510

Conversions

Conversions Part 2

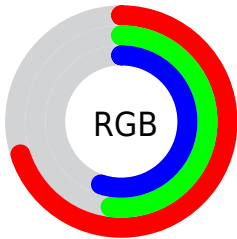
Format	Color
RYB	178, 132, 141
Decimal	11699341
CIELab	59.79, 19.04, 2.10
CIElCh	60, 19.153, 6.298
Yxy	27.8906, 0.3561, 0.3161
Android (android.graphics.Color)	4289889421 (0xFFB2848D)
YUV	146.7800, -2.8495, 27.3799
Hunter-Lab	52.8115, 13.7745, 4.4928

Details

The Android color `4289889421` is a light color, and the websafe version is hex `CC9999`. A complement of this color would be `4286886569`, and the grayscale version is `4287861651`.

A 20% lighter version of the original color is `4293573059`, and `4286337627` is the 20% darker color. If you saturate the color by 10%, you get `4289884799`, and if you desaturate by 10%, it is `4289894043`.

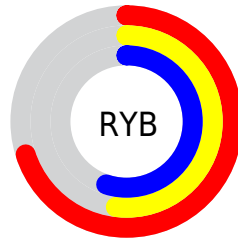
Distribution



Red (70%)

Green (52%)

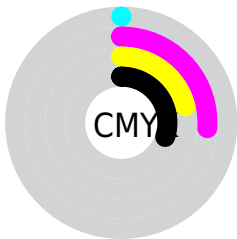
Blue (55%)



Red (70%)

Yellow (52%)

Blue (55%)

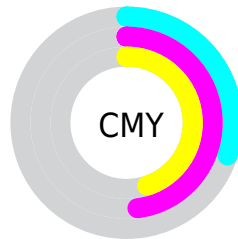


Cyan (0%)

Magenta (26%)

Yellow (21%)

Black (30%)



Cyan (30%)

Magenta (48%)

Yellow (45%)

Brightness & Saturation Gradients

These gradients show how the Android color 4289889421 changes by changing the brightness by 10 percent. The first figure shows a shift by +10% for each color and the second figure -10%.

Similar to the brightness gradients but the following saturation gradients show a change of the Android color 4289889421 by changing the saturation by 10% instead.



4289889421



4289889421

4294967295



4288113523



4293573059



4286337627



4294956510



4284693316



4294963963



4283049005



4281470745



4280287233



4278190080



4289889421



4289889421



4289884799



4289894043

 4289880176

 4289898666

 4289875810

 4289903032

 4289871188

 4289907654

 4289866565

 4289912277

 4289861943

 4289916899

 4289857321

 4289921009

 4289855523

 4289921023

Harmonies

Analogous

The Analogous color harmony consists of three colors that are next to each other on the color wheel.



4289300126



4289889421



4289889917

Triad

The Triadic color harmony groups three colors that are evenly spaced from another and form a triangle on the color wheel.



4289889421



4287010165



4285306286

Complementary

The Complementary color scheme is a pair of colors which are on the opposite of each other on the color wheel.



4289889421



4286886569

Split Complementary

Split-complementary colors differ from the complementary color scheme. The scheme consists of three colors, the original color and two neighbors of the complement color.



4284586403



4289889421



4285831298

Square

The Square scheme is like the rectangle color scheme, but the four colors are evenly spaced on the color wheel.



4289889421



4288254063



4284848787



4286681265

Rectangle

The Rectangle color scheme consists of four colors that form a rectangle on the color wheel.



4289889421



4289497461



4284848787



4284979115

Sweetspot

The Sweet Spot groups the original color and five complimentary colors.



4289889421



4293449177



4289299634



4285885036



4294309365



4285887861

Same Dimension

The Same Dimension uses a secret algorithm to generate beautiful new colors.



4289889421



4293435566



4289892996



4284043346



4288217118



4279894021

Inverse Universe

The Inverse Universe completely reimagines the original color for something new.



4289889421



4293435566



4286882994



4284043346



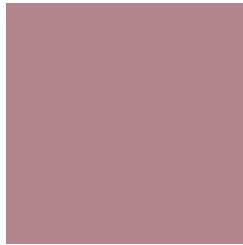
4288217118



4279894021

Previews

White Background



This preview shows how the Android color 4289889421 looks on a white background.

Color Contrast Check

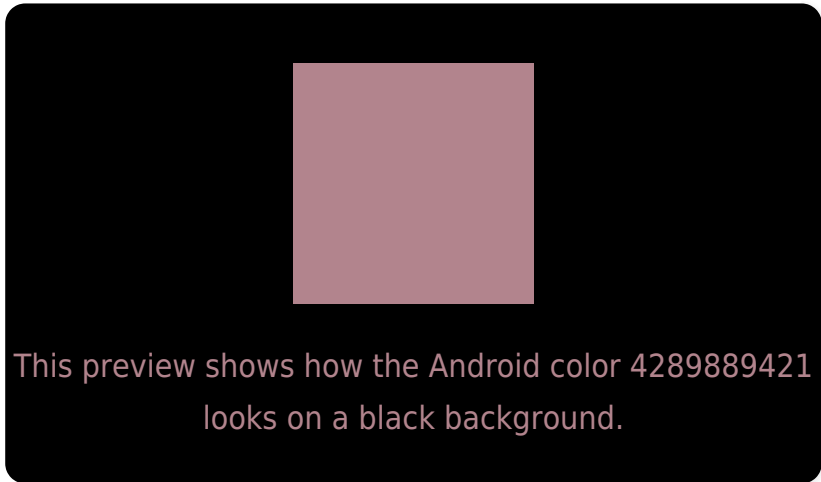
Large Text (above 18pt) WCAG AA ✓ Pass

Any Text WCAG AA ✗ Fail

Large Text (above 18pt) WCAG AAA ✗ Fail

Any Text WCAG AAA ✗ Fail

Black Background



Color Contrast Check

Large Text (above 18pt) WCAG AA ✓ Pass

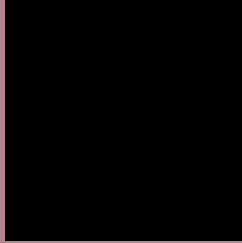
Any Text WCAG AA ✓ Pass

Large Text (above 18pt) WCAG AAA ✓ Pass

Any Text WCAG AAA × Fail

If you want to check with other color combinations, try the [Color Contrast Checker](#).

Android 4289889421 Background



This preview shows how black text looks on a background with the Android color 4289889421.




This preview shows how white text looks on a background with the Android color 4289889421.

Color Blindness Simulation

Color vision deficiency is a very complex topic, and I could not describe the different causes any better than Wikipedia does, so if you want to learn more, you should check out their [article about color blindness](#).

Dichromacy





Tritanopia
4289889422

Trichromacy



Original Color
4289889421

Protanomaly
4288580753

Deuteranomaly
4289169804

Tritanomaly
4289889422

Monochromacy



Original Color
4289889421

Achromatopsia
4287861651

Achromatomaly
4288581265

CSS Examples

Text

The CSS property to change the color of the text to Android 4289889421 is called "color". The color property can be set on classes, ids or directly on the HTML element.

This example shows how text in the color `rgb(178, 132, 141)` looks like.

```
.text, #text, p{  
    color:rgb(178, 132, 141)  
}
```

If you want to add a text shadow in that color use the text-shadow property, you can generate a text shadow directly with our [CSS Text Shadow Generator](#).

Here you see how black text with a 4 pixel rgb(178, 132, 141) colored shadow looks like.

```
.shadow{ text-shadow: 4px 4px 2px rgb(178, 132, 141) }
```

Border

The CSS property to change the border of an element to Android 4289889421 is called "border". The border property can be set on classes, ids or directly on the HTML element.

This example shows the color as border, it can be applied via the CSS property "border" or "border-color".

```
.border, #border, table{ border:4px solid rgb(178, 132, 141) }
```

If only the border color should be changed use the property `border-color`.

```
.border{ border-color:rgb(178, 132, 141) }
```

If you want to add a box shadow in that color use:

Here you see how a box with a 4 pixel `rgb(178, 132, 141)` colored shadow looks like.

```
.boxshadow{ -moz-box-shadow:4px 4px 4px  
4px rgb(178, 132, 141); -webkit-box-  
shadow:4px 4px 4px 4px rgb(178, 132, 141);  
box-shadow:4px 4px 4px 4px rgb(178, 132,  
141) }
```

Background

The CSS property to change the background color of an element to Android 4289889421 is called "background". The background property can be set on classes, ids or directly on the HTML element.

```
.background, #background, body{  
background: rgb(178, 132, 141) }
```

If only the background color should be changed can be used:

```
.background{ background-color: rgb(178,  
132, 141) }
```

This example shows the color as background, it is applied via the CSS property "background".

To optimize and compress your CSS code, you can use our [online CSS compressor and optimizer](#) based on csstidy. If you want to create a linear or radial gradient as background or border, check our [CSS Gradient Generator](#).

Hey! You found this booklet interesting? Support Converting Colors with the new Membership Option!

The pro membership hides all ads, plus gives you double the colors in the color bucket, and more awesome pro features!

[Learn more, Memberships starting at \\$2.50/m!](#)

**Follow me
on Twitter!**

@ConvertingColor