

Converting Colors

Android(4289890956)

Have a look what the booklet for
Android(4289890956) contains.

Android(4289890956)	3
<i>Conversions</i>	4
<i>Details</i>	6
<i>Harmonies</i>	11
<i>Previews</i>	23
<i>Color Blindness Simulation</i>	26
<i>CSS Examples</i>	29

Color

Android(4289890956)

Conversions

Conversions Part 1

Format	Color
Hex	B28A8C
RGB	178, 138, 140
RGB Percent	70%, 54%, 55%
CMY	0.3020, 0.4588, 0.4510
CMYK	0.00, 0.22, 0.21, 0.30
HSL	357°, 21%, 62%
HSV	357°, 22%, 70%
XYZ	32.1822, 29.5354, 28.8157
YIQ	150.1880, 23.1980, 9.1020

Conversions

Conversions Part 2

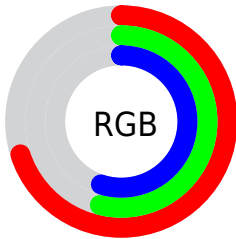
Format	Color
RYB	178, 138, 140
Decimal	11700876
CIELab	61.25, 15.51, 4.79
CIElCh	61, 16.236, 17.142
Yxy	29.5354, 0.3555, 0.3262
Android (android.graphics.Color)	4289890956 (0xFFB28A8C)
YUV	150.1880, -5.0227, 24.3911
Hunter-Lab	54.3465, 10.5955, 6.6057

Details

The Android color **4289890956** is a light color, and the websafe version is hex **CC9999**. A complement of this color would be **4287279792**, and the grayscale version is **4288059030**.

A 20% lighter version of the original color is **4293574849**, and **4286404698** is the 20% darker color. If you saturate the color by 10%, you get **4289886331**, and if you desaturate by 10%, it is **4289895581**.

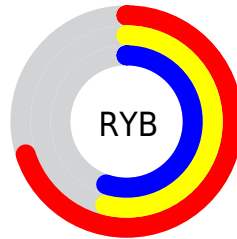
Distribution



Red (70%)

Green (54%)

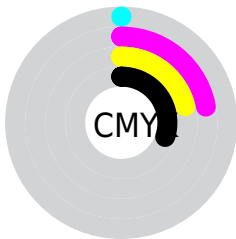
Blue (55%)



Red (70%)

Yellow (54%)

Blue (55%)

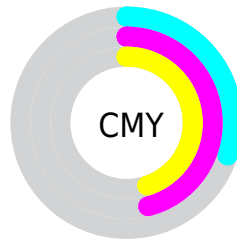


Cyan (0%)

Magenta (22%)

Yellow (21%)

Black (30%)



Cyan (30%)

Magenta (46%)

Yellow (45%)

Brightness & Saturation Gradients

These gradients show how the Android color 4289890956 changes by changing the brightness by 10 percent. The first figure shows a shift by +10% for each color and the second figure -10%.

Similar to the brightness gradients but the following saturation gradients show a change of the Android color 4289890956 by changing the saturation by 10% instead.



4289890956



4289890956

4294967295



4288114803



4293574849



4286404698



4294958045



4284694595



4294965498



4283050541



4281537816



4280287232



4278190080



4289890956



4289890956



4289886331



4289895581

 4289881706

 4289900206

 4289877337

 4289904575

 4289872712

 4289909200

 4289868087

 4289913825

 4289863463

 4289918449

 4289858838

 4289921023

 4289855497

Harmonies

Analogous

The Analogous color harmony consists of three colors that are next to each other on the color wheel.



4289563291



4289890956



4289694847

Triad

The Triadic color harmony groups three colors that are evenly spaced from another and form a triangle on the color wheel.



4289890956



4287011200



4286355375

Complementary

The Complementary color scheme is a pair of colors which are on the opposite of each other on the color wheel.



4289890956



4287279792

Split Complementary

Split-complementary colors differ from the complementary color scheme. The scheme consists of three colors, the original color and two neighbors of the complement color.



4285569960



4289890956



4286028941

Square

The Square scheme is like the rectangle color scheme, but the four colors are evenly spaced on the color wheel.



4289890956



4288059000



4285439132



4287533743

Rectangle

The Rectangle color scheme consists of four colors that form a rectangle on the color wheel.



4289890956



4289302394



4285439132



4286027950

Sweetspot

The Sweet Spot groups the original color and five complimentary colors.



4289890956



4293449945



4289759922



4285885548



4294309365



4285887861

Same Dimension

The Same Dimension uses a secret algorithm to generate beautiful new colors.



4289890956



4293437869



4289895306



4284043345



4288217096



4279894017

Inverse Universe

The Inverse Universe completely reimagines the original color for something new.



4289890956



4293437869



4287275186



4284043345



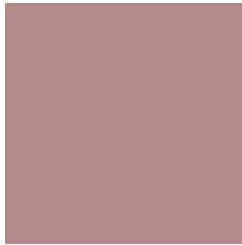
4288217096



4279894017

Previews

White Background



This preview shows how the Android color 4289890956 looks on a white background.

Color Contrast Check

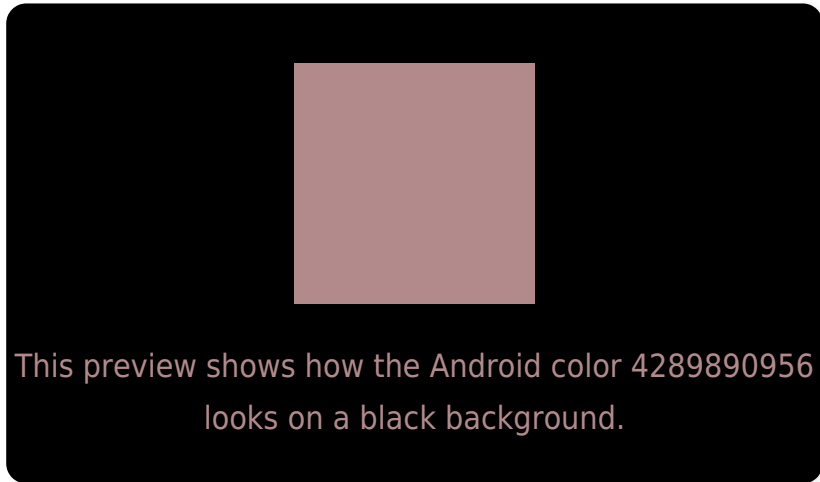
Large Text (above 18pt) WCAG AA ✓ Pass

Any Text WCAG AA ✗ Fail

Large Text (above 18pt) WCAG AAA ✗ Fail

Any Text WCAG AAA ✗ Fail

Black Background



Color Contrast Check

Large Text (above 18pt) WCAG AA ✓ Pass

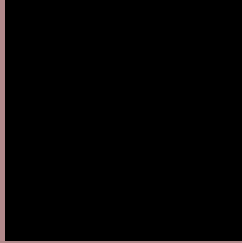
Any Text WCAG AA ✓ Pass

Large Text (above 18pt) WCAG AAA ✓ Pass

Any Text WCAG AAA × Fail

If you want to check with other color combinations, try the [Color Contrast Checker](#).

Android 4289890956 Background



This preview shows how black text looks on a background with the Android color 4289890956.



This preview shows how white text looks on a background with the Android color 4289890956.

Color Blindness Simulation

Color vision deficiency is a very complex topic, and I could not describe the different causes any better than Wikipedia does, so if you want to learn more, you should check out their [article about color blindness](#).

Dichromacy



Original Color
4289890956

Protanopia
4288123793

Deuteranopia
4289105803

Trichromacy



Original Color

4289890956

Protanomaly

4288778383

Deuteranomaly

4289367435

Tritanomaly

4289956240

Monochromacy



Original Color

4289890956

Achromatopsia

4288059030

Achromatomaly

4288713362

CSS Examples

Text

The CSS property to change the color of the text to Android 4289890956 is called "color". The color property can be set on classes, ids or directly on the HTML element.

This example shows how text in the color `rgb(178, 138, 140)` looks like.

```
.text, #text, p{  
    color:rgb(178, 138, 140)  
}
```

If you want to add a text shadow in that color use the text-shadow property, you can generate a text shadow directly with our [CSS Text Shadow Generator](#).

Here you see how black text with a 4 pixel rgb(178, 138, 140) colored shadow looks like.

```
.shadow{ text-shadow: 4px 4px 2px rgb(178, 138, 140) }
```

Border

The CSS property to change the border of an element to Android 4289890956 is called "border". The border property can be set on classes, ids or directly on the HTML element.

This example shows the color as border, it can be applied via the CSS property "border" or "border-color".

```
.border, #border, table{ border:4px solid rgb(178, 138, 140) }
```

If only the border color should be changed use the property `border-color`.

```
.border{ border-color:rgb(178, 138, 140) }
```

If you want to add a box shadow in that color use:

Here you see how a box with a 4 pixel `rgb(178, 138, 140)` colored shadow looks like.

```
.boxshadow{ -moz-box-shadow:4px 4px 4px  
4px rgb(178, 138, 140); -webkit-box-  
shadow:4px 4px 4px 4px rgb(178, 138, 140);  
box-shadow:4px 4px 4px 4px rgb(178, 138,  
140) }
```

Background

The CSS property to change the background color of an element to Android 4289890956 is called "background". The background property can be set on classes, ids or directly on the HTML element.

```
.background, #background, body{  
background: rgb(178, 138, 140) }
```

If only the background color should be changed can be used:

```
.background{ background-color: rgb(178,  
138, 140) }
```

This example shows the color as background, it is applied via the CSS property "background".

To optimize and compress your CSS code, you can use our [online CSS compressor and optimizer](#) based on csstidy. If you want to create a linear or radial gradient as background or border, check our [CSS Gradient Generator](#).

Hey! You found this booklet interesting? Support Converting Colors with the new Membership Option!

The pro membership hides all ads, plus gives you double the colors in the color bucket, and more awesome pro features!

[Learn more, Memberships starting at \\$2.50/m!](#)

**Follow me
on Twitter!**

@ConvertingColor