

# Converting Colors

Android(4289892754)

Have a look what the booklet for  
Android(4289892754) contains.

<b>Android(4289892754)</b> .....	3
<b><i>Conversions</i></b> .....	4
<b><i>Details</i></b> .....	6
<b><i>Harmonies</i></b> .....	11
<b><i>Previews</i></b> .....	23
<b><i>Color Blindness Simulation</i></b> .....	26
<b><i>CSS Examples</i></b> .....	29

# **Color**

**Android(4289892754)**

# Conversions

## Conversions Part 1

Format	Color
Hex	<a href="#">B29192</a>
RGB	<a href="#">178, 145, 146</a>
RGB Percent	<a href="#">70%, 57%, 57%</a>
CMY	<a href="#">0.3020, 0.4314, 0.4275</a>
CMYK	<a href="#">0.00, 0.19, 0.18, 0.30</a>
HSL	<a href="#">358°, 18%, 63%</a>
HSV	<a href="#">358°, 19%, 70%</a>
XYZ	<a href="#">33.6738, 31.7911, 31.5556</a>
YIQ	<a href="#">154.9810, 19.3470, 7.3070</a>

# Conversions

## Conversions Part 2

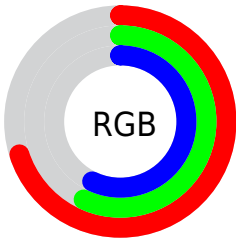
<b>Format</b>	<b>Color</b>
<a href="#">RYB</a>	<a href="#">178, 145, 146</a>
Decimal	<a href="#">11702674</a>
CIELab	<a href="#">63.17, 12.55, 4.15</a>
CIELCh	<a href="#">63, 13.215, 18.285</a>
Yxy	<a href="#">31.7911, 0.3471, 0.3277</a>
Android (android.graphics.Color)	<a href="#">4289892754</a> ( <a href="#">0xFFB29192</a> )
YUV	<a href="#">154.9810, -4.4276, 20.1877</a>
Hunter-Lab	<a href="#">56.3836, 7.9337, 6.2863</a>

# Details

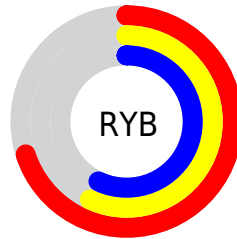
The Android color `4289892754` is a light color, and the websafe version is hex `CC9999`. A complement of this color would be `4287738545`, and the grayscale version is `4288387995`.

A 20% lighter version of the original color is `4293576648`, and `4286406240` is the 20% darker color. If you saturate the color by 10%, you get `4289888129`, and if you desaturate by 10%, it is `4289897379`.

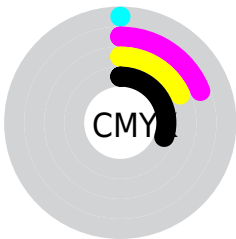
# Distribution



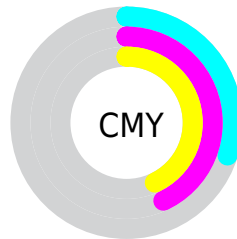
- Red (70%)
- Green (57%)
- Blue (57%)



- Red (70%)
- Yellow (57%)
- Blue (57%)



- Cyan (0%)
- Magenta (19%)
- Yellow (18%)
- Black (30%)



- Cyan (30%)
- Magenta (43%)
- Yellow (43%)

# Brightness & Saturation Gradients

These gradients show how the Android color 4289892754 changes by changing the brightness by 10 percent. The first figure shows a shift by +10% for each color and the second figure -10%.

Similar to the brightness gradients but the following saturation gradients show a change of the Android color 4289892754 by changing the saturation by 10% instead.



 4289892754

 4289892754

4294967295

 4288116600

 4293576648

 4286406240

 4294960100

 4284761928

 4283117618

 4281604893

 4280353026

 4278190080

 4289892754

 4289892754

 4289888129

 4289897379

 4289883503

 4289902005

 4289879134

 4289906374

 4289874509

 4289910999

 4289869884

 4289915624

 4289865258

 4289920250

 4289860633

 4289921023

 4289856264

 4289855493

# Harmonies

## Analogous

The Analogous color harmony consists of three colors that are next to each other on the color wheel.



4289630622



4289892754



4289696648

# Triad

The Triadic color harmony groups three colors that are evenly spaced from another and form a triangle on the color wheel.



4289892754



4287471241



4287077296

# Complementary

The Complementary color scheme is a pair of colors which are on the opposite of each other on the color wheel.



4289892754



4287738545

# Split Complementary

Split-complementary colors differ from the complementary color scheme. The scheme consists of three colors, the original color and two neighbors of the complement color.



4286422698



4289892754



4286685332

# Square

The Square scheme is like the rectangle color scheme, but the four colors are evenly spaced on the color wheel.



4289892754



4288387715



4286292128



4287993775

# Rectangle

The Rectangle color scheme consists of four colors that form a rectangle on the color wheel.



4289892754



4289369475



4286292128



4286815406



# Sweetspot

The Sweet Spot groups the original color and five complimentary colors.



4289892754



4293450459



4289827250



4285885805



4294309365



4285887861



# Same Dimension

The Same Dimension uses a secret algorithm to generate beautiful new colors.



4289892754



4293440951



4289896593



4284043345



4288217093



4279894017



# Inverse Universe

The Inverse Universe completely reimagines the original color for something new.



4289892754



4293440951



4287734706



4284043345



4288217093

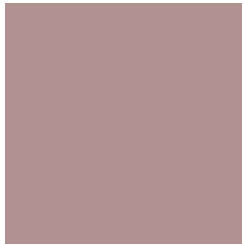


4279894017



# Previews

## White Background



This preview shows how the Android color 4289892754 looks on a white background.

## Color Contrast Check

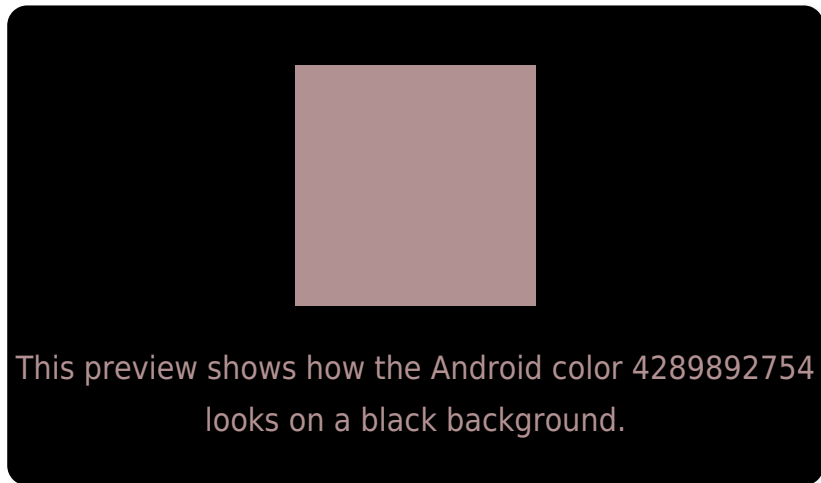
Large Text (above 18pt) WCAG AA × Fail

Any Text WCAG AA × Fail

Large Text (above 18pt) WCAG AAA × Fail

Any Text WCAG AAA × Fail

# Black Background



## Color Contrast Check

Large Text (above 18pt) WCAG AA ✓ Pass

Any Text WCAG AA ✓ Pass

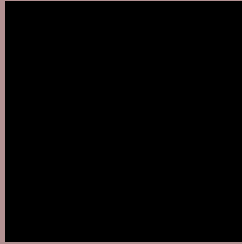
Large Text (above 18pt) WCAG AAA ✓ Pass

Any Text WCAG AAA ✓ Pass

If you want to check with other color combinations, try the [Color Contrast Checker](#).



# Android 4289892754 Background



This preview shows how black text looks on a background with the Android color 4289892754.



This preview shows how white text looks on a background with the Android color 4289892754.

# Color Blindness Simulation

Color vision deficiency is a very complex topic, and I could not describe the different causes any better than Wikipedia does, so if you want to learn more, you should check out their [article about color blindness](#).

## Dichromacy



**Original Color**  
4289892754

**Protanopia**  
4288452758

**Deuteranopia**  
4289434769



**Tritanopia**  
4289958043

# Trichromacy



**Original Color**  
4289892754

**Protanomaly**  
4288976277

**Deuteranomaly**  
4289631121

**Tritanomaly**  
4289958040

# Monochromacy



**Original Color**  
4289892754

**Achromatopsia**  
4288387995

**Achromatomaly**  
4288911256

# CSS Examples

## Text

The CSS property to change the color of the text to Android 4289892754 is called "color". The color property can be set on classes, ids or directly on the HTML element.

This example shows how text in the color `rgb(178, 145, 146)` looks like.

```
.text, #text, p{  
    color:rgb(178, 145, 146)  
}
```

If you want to add a text shadow in that color use the text-shadow property, you can generate a text shadow directly with our [CSS Text Shadow Generator](#).

Here you see how black text with a 4 pixel rgb(178, 145, 146) colored shadow looks like.

```
.shadow{ text-shadow: 4px 4px 2px rgb(178, 145, 146) }
```

## Border

The CSS property to change the border of an element to Android 4289892754 is called "border". The border property can be set on classes, ids or directly on the HTML element.

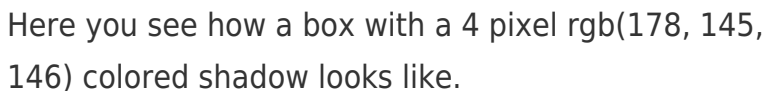
This example shows the color as border, it can be applied via the CSS property "border" or "border-color".

```
.border, #border, table{ border:4px solid rgb(178, 145, 146) }
```

If only the border color should be changed use the property `border-color`.

```
.border{ border-color:rgb(178, 145, 146) }
```

If you want to add a box shadow in that color use:



Here you see how a box with a 4 pixel `rgb(178, 145, 146)` colored shadow looks like.

```
.boxshadow{ -moz-box-shadow:4px 4px 4px 4px rgb(178, 145, 146); -webkit-box-shadow:4px 4px 4px 4px rgb(178, 145, 146); box-shadow:4px 4px 4px 4px rgb(178, 145, 146) }
```

# Background

The CSS property to change the background color of an element to Android 4289892754 is called "background". The background property can be set on classes, ids or directly on the HTML element.

```
.background, #background, body{  
background: rgb(178, 145, 146) }
```

If only the background color should be changed can be used:

```
.background{ background-color: rgb(178,  
145, 146) }
```

This example shows the color as background, it is applied via the CSS property "background".

To optimize and compress your CSS code, you can use our [online CSS compressor and optimizer](#) based on csstidy. If you want to create a linear or radial gradient as background or border, check our [CSS Gradient Generator](#).



Hey! You found this booklet interesting? Support Converting Colors with the new Membership Option!

The pro membership hides all ads, plus gives you double the colors in the color bucket, and more awesome pro features!

**[Learn more, Memberships starting at \\$2.50/m!](#)**

**Follow me  
on Twitter!**

@ConvertingColor