

Converting Colors

Android(4289893517)

Have a look what the booklet for
Android(4289893517) contains.

Android(4289893517)	3
<i>Conversions</i>	4
<i>Details</i>	6
<i>Harmonies</i>	11
<i>Previews</i>	23
<i>Color Blindness Simulation</i>	26
<i>CSS Examples</i>	29

Color

Android(4289893517)

Conversions

Conversions Part 1

Format	Color
Hex	B2948D
RGB	178, 148, 141
RGB Percent	70%, 58%, 55%
CMY	0.3020, 0.4196, 0.4471
CMYK	0.00, 0.17, 0.21, 0.30
HSL	11°, 19%, 63%
HSV	11°, 21%, 70%
XYZ	33.7577, 32.5679, 29.7063
YIQ	156.1720, 20.1270, 4.1830

Conversions

Conversions Part 2

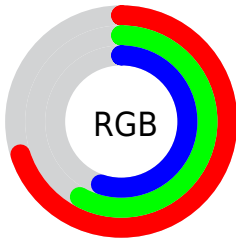
Format	Color
RYB	178, 150, 141
Decimal	11703437
CIELab	63.81, 10.08, 7.89
CIElCh	64, 12.802, 38.027
Yxy	32.5679, 0.3515, 0.3391
Android (android.graphics.Color)	4289893517 (0xFFB2948D)
YUV	156.1720, -7.4798, 19.1432
Hunter-Lab	57.0683, 5.7190, 9.0850

Details

The Android color `4289893517` is a light color, and the websafe version is hex `CC9999`. A complement of this color would be `4287474610`, and the grayscale version is `4288453788`.

A 20% lighter version of the original color is `4293577411`, and `4286407003` is the 20% darker color. If you saturate the color by 10%, you get `4289889915`, and if you desaturate by 10%, it is `4289897119`.

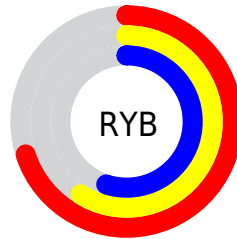
Distribution



Red (70%)

Green (58%)

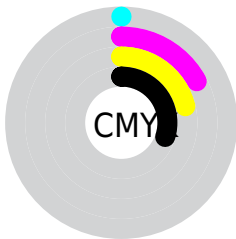
Blue (55%)



Red (70%)

Yellow (59%)

Blue (55%)

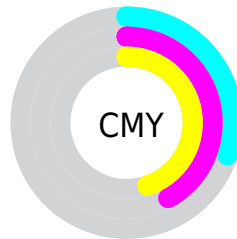


Cyan (0%)

Magenta (17%)

Yellow (21%)

Black (30%)



Cyan (30%)

Magenta (42%)

Yellow (45%)

Brightness & Saturation Gradients

These gradients show how the Android color 4289893517 changes by changing the brightness by 10 percent. The first figure shows a shift by +10% for each color and the second figure -10%.

Similar to the brightness gradients but the following saturation gradients show a change of the Android color 4289893517 by changing the saturation by 10% instead.



4289893517



4289893517

4294967295



4288117363



4293577411



4286407003



4294960862



4284696899



4294967291



4283118381



4281605657



4280288512



4278190080



4289893517



4289893517



4289889915



4289897119

4289886057

4289900977

4289882456

4289904578

4289878598

4289908436

4289874996

4289912038

4289871138

4289915896

4289867536

4289919487

4289864192

4289921023

Harmonies

Analogous

The Analogous color harmony consists of three colors that are next to each other on the color wheel.



4289893272



4289893517



4289501062

Triad

The Triadic color harmony groups three colors that are evenly spaced from another and form a triangle on the color wheel.



4289893517



4287078802



4287798193

Complementary

The Complementary color scheme is a pair of colors which are on the opposite of each other on the color wheel.



4289893517



4287474610

Split Complementary

Split-complementary colors differ from the complementary color scheme. The scheme consists of three colors, the original color and two neighbors of the complement color.



4286946991



4289893517



4286554525

Square

The Square scheme is like the rectangle color scheme, but the four colors are evenly spaced on the color wheel.



4289893517



4287929992



4286489000



4288780205

Rectangle

The Rectangle color scheme consists of four colors that form a rectangle on the color wheel.



4289893517



4289042820



4286489000



4287470769

Sweetspot

The Sweet Spot groups the original color and five complimentary colors.



4289893517



4293451226



4289891755



4285886317



4294309365



4285887861

Same Dimension

The Same Dimension uses a secret algorithm to generate beautiful new colors.



4289893517



4293441966



4289898125



4284043856



4288224512



4279895296

Inverse Universe

The Inverse Universe completely reimagines the original color for something new.



4287474610



4289650152



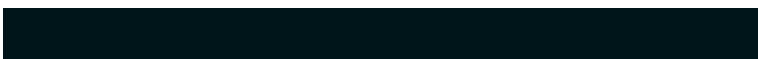
4287470002



4283455577



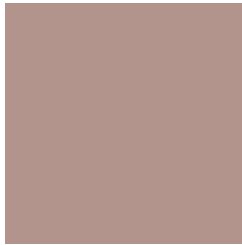
4278221977



4278195482

Previews

White Background



This preview shows how the Android color 4289893517 looks on a white background.

Color Contrast Check

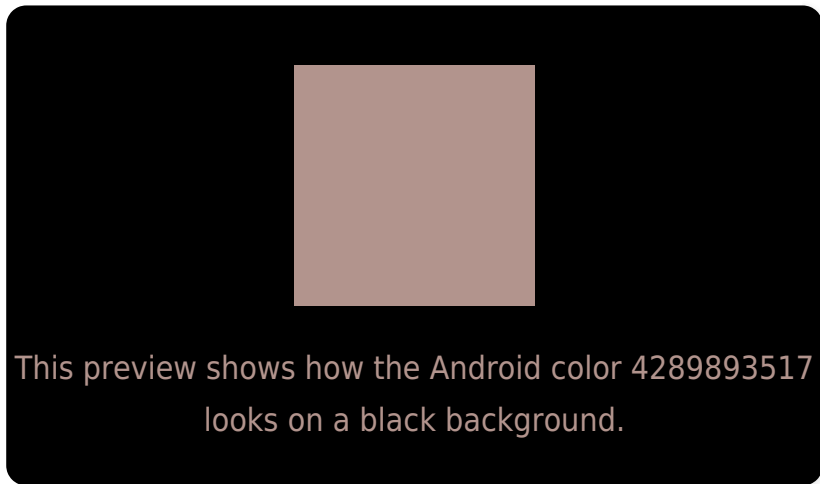
Large Text (above 18pt) WCAG AA × Fail

Any Text WCAG AA × Fail

Large Text (above 18pt) WCAG AAA × Fail

Any Text WCAG AAA × Fail

Black Background



Color Contrast Check

Large Text (above 18pt) WCAG AA ✓ Pass

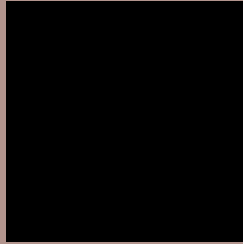
Any Text WCAG AA ✓ Pass

Large Text (above 18pt) WCAG AAA ✓ Pass

Any Text WCAG AAA ✓ Pass

If you want to check with other color combinations, try the [Color Contrast Checker](#).

Android 4289893517 Background



This preview shows how black text looks on a background with the Android color 4289893517.



This preview shows how white text looks on a background with the Android color 4289893517.

Color Blindness Simulation

Color vision deficiency is a very complex topic, and I could not describe the different causes any better than Wikipedia does, so if you want to learn more, you should check out their [article about color blindness](#).

Dichromacy



Original Color
4289893517

Protanopia
4288715408

Deuteranopia
4289697165



Tritanopia
4290024093

Trichromacy



Original Color
4289893517

Protanomaly
4289173647

Deuteranomaly
4289762701

Tritanomaly
4289958807

Monochromacy



Original Color
4289893517

Achromatopsia
4288453788

Achromatomaly
4288977303

CSS Examples

Text

The CSS property to change the color of the text to Android 4289893517 is called "color". The color property can be set on classes, ids or directly on the HTML element.

This example shows how text in the color `rgb(178, 148, 141)` looks like.

```
.text, #text, p{  
    color:rgb(178, 148, 141)  
}
```

If you want to add a text shadow in that color use the text-shadow property, you can generate a text shadow directly with our [CSS Text Shadow Generator](#).

Here you see how black text with a 4 pixel rgb(178, 148, 141) colored shadow looks like.

```
.shadow{ text-shadow: 4px 4px 2px rgb(178, 148, 141) }
```

Border

The CSS property to change the border of an element to Android 4289893517 is called "border". The border property can be set on classes, ids or directly on the HTML element.

This example shows the color as border, it can be applied via the CSS property "border" or "border-color".

```
.border, #border, table{ border:4px solid rgb(178, 148, 141) }
```

If only the border color should be changed use the property `border-color`.

```
.border{ border-color:rgb(178, 148, 141) }
```

If you want to add a box shadow in that color use:

Here you see how a box with a 4 pixel `rgb(178, 148, 141)` colored shadow looks like.

```
.boxshadow{ -moz-box-shadow:4px 4px 4px  
4px rgb(178, 148, 141); -webkit-box-  
shadow:4px 4px 4px 4px rgb(178, 148, 141);  
box-shadow:4px 4px 4px 4px rgb(178, 148,  
141) }
```

Background

The CSS property to change the background color of an element to Android 4289893517 is called "background". The background property can be set on classes, ids or directly on the HTML element.

```
.background, #background, body{  
background: rgb(178, 148, 141) }
```

If only the background color should be changed can be used:

```
.background{ background-color: rgb(178,  
148, 141) }
```

This example shows the color as background, it is applied via the CSS property "background".

To optimize and compress your CSS code, you can use our [online CSS compressor and optimizer](#) based on csstidy. If you want to create a linear or radial gradient as background or border, check our [CSS Gradient Generator](#).

Hey! You found this booklet interesting? Support Converting Colors with the new Membership Option!

The pro membership hides all ads, plus gives you double the colors in the color bucket, and more awesome pro features!

[Learn more, Memberships starting at \\$2.50/m!](#)

**Follow me
on Twitter!**

@ConvertingColor