

Converting Colors

Android(4289897140)

Have a look what the booklet for
Android(4289897140) contains.

Android(4289897140)	3
<i>Conversions</i>	4
<i>Details</i>	6
<i>Harmonies</i>	11
<i>Previews</i>	23
<i>Color Blindness Simulation</i>	26
<i>CSS Examples</i>	29

Color

Android(4289897140)

Conversions

Conversions Part 1

Format	Color
Hex	B2A2B4
RGB	178, 162, 180
RGB Percent	70%, 64%, 71%
CMY	0.3020, 0.3647, 0.2941
CMYK	0.01, 0.10, 0.00, 0.29
HSL	293°, 11%, 67%
HSV	293°, 10%, 71%
XYZ	39.5186, 38.6009, 48.5479
YIQ	168.8360, 3.7580, 8.9900

Conversions

Conversions Part 2

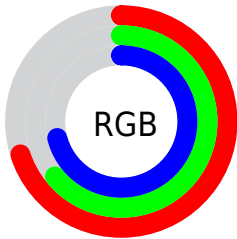
Format	Color
RYB	178, 162, 180
Decimal	11707060
CIELab	68.46, 9.13, -7.17
CIElCh	68, 11.607, 321.856
Yxy	38.6009, 0.3120, 0.3047
Android (android.graphics.Color)	4289897140 (0xFFB2A2B4)
YUV	168.8360, 5.5039, 8.0368
Hunter-Lab	62.1296, 4.8112, -2.8382

Details

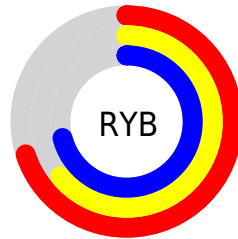
The Android color `4289897140` is a light color, and the websafe version is hex `999999`. A complement of this color would be `4288984226`, and the grayscale version is `4289309097`.

A 20% lighter version of the original color is `4293581292`, and `4286410367` is the 20% darker color. If you saturate the color by 10%, you get `4289761460`, and if you desaturate by 10%, it is `4290032820`.

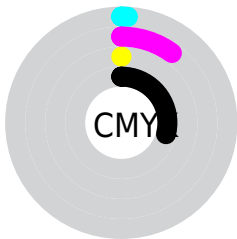
Distribution



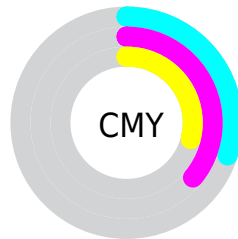
- Red (70%)
- Green (64%)
- Blue (71%)



- Red (70%)
- Yellow (64%)
- Blue (71%)



- Cyan (1%)
- Magenta (10%)
- Yellow (0%)
- Black (29%)



- Cyan (30%)
- Magenta (36%)
- Yellow (29%)

Brightness & Saturation Gradients

These gradients show how the Android color 4289897140 changes by changing the brightness by 10 percent. The first figure shows a shift by +10% for each color and the second figure -10%.

Similar to the brightness gradients but the following saturation gradients show a change of the Android color 4289897140 by changing the saturation by 10% instead.

 4289897140

 4289897140

4294967295

 4288120985

 4293581292

 4286410367

 4294964735

 4284765798

 4283187022

 4281739575

 4280292386

 4278255627

 4278190080

 4289897140

 4289897140

4289761460

4290032820

4289625780

4290168500

4289490100

4290304180

4289354420

4290439860

4289218740

4290575540

4289083060

4290707380

4288947380

4290838452

4288811700

4290969524

4288676020

4291100596

Harmonies

Analogous

The Analogous color harmony consists of three colors that are next to each other on the color wheel.



4289111482



4289897140



4290486442

Triad

The Triadic color harmony groups three colors that are evenly spaced from another and form a triangle on the color wheel.



4289897140



4289897874



4287475118

Complementary

The Complementary color scheme is a pair of colors which are on the opposite of each other on the color wheel.



4289897140



4288984226

Split Complementary

Split-complementary colors differ from the complementary color scheme. The scheme consists of three colors, the original color and two neighbors of the complement color.



4287737252



4289897140



4289178003

Square

The Square scheme is like the rectangle color scheme, but the four colors are evenly spaced on the color wheel.



4289897140



4290486935



4288392090



4287605943

Rectangle

The Rectangle color scheme consists of four colors that form a rectangle on the color wheel.



4289897140



4290617507



4288392090



4287475115

Sweetspot

The Sweet Spot groups the original color and five complimentary colors.



4289897140



4293584107



4288849076



4285886837



4294309365



4285887861

Same Dimension

The Same Dimension uses a secret algorithm to generate beautiful new colors.



4289897140



4293381867



4290028205



4283977817



4287103129



4279697434

Inverse Universe

The Inverse Universe completely reimagines the original color for something new.



4290028196



4293643986



4288853161



4284043345



4288217105



4279894019

Previews

White Background



This preview shows how the Android color 4289897140 looks on a white background.

Color Contrast Check

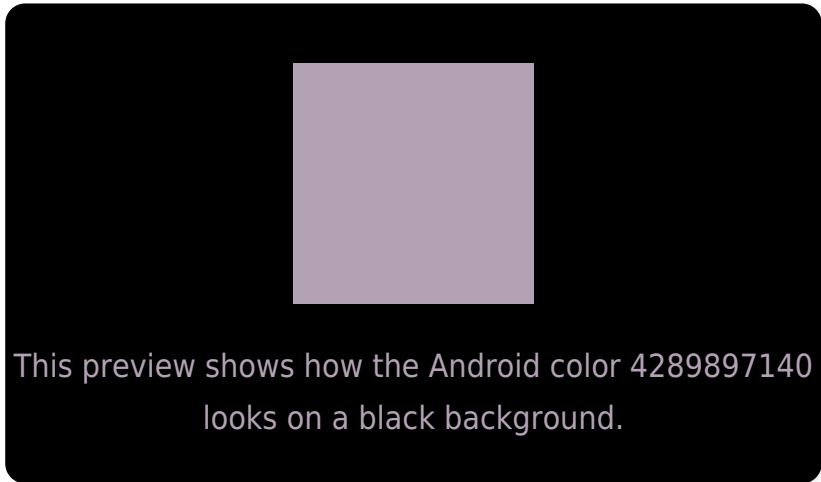
Large Text (above 18pt) WCAG AA × Fail

Any Text WCAG AA × Fail

Large Text (above 18pt) WCAG AAA × Fail

Any Text WCAG AAA × Fail

Black Background



Color Contrast Check

Large Text (above 18pt) WCAG AA ✓ Pass

Any Text WCAG AA ✓ Pass

Large Text (above 18pt) WCAG AAA ✓ Pass

Any Text WCAG AAA ✓ Pass

If you want to check with other color combinations, try the [Color Contrast Checker](#).

Android 4289897140 Background



This preview shows how black text looks on a background with the Android color 4289897140.



This preview shows how white text looks on a background with the Android color 4289897140.

Color Blindness Simulation

Color vision deficiency is a very complex topic, and I could not describe the different causes any better than Wikipedia does, so if you want to learn more, you should check out their [article about color blindness](#).

Dichromacy



Original Color


4289897140

Protanopia

4289046198

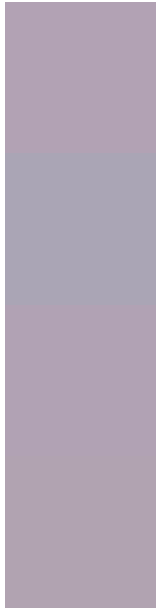
Deuteranopia

4289831604



Tritanopia
4289831856

Trichromacy



Original Color
4289897140

Protanomaly
4289373621

Deuteranomaly
4289831604

Tritanomaly
4289831857

Monochromacy



Original Color
4289897140

Achromatopsia
4289309097

Achromatomaly
4289504941

CSS Examples

Text

The CSS property to change the color of the text to Android 4289897140 is called "color". The color property can be set on classes, ids or directly on the HTML element.

This example shows how text in the color `rgb(178, 162, 180)` looks like.

```
.text, #text, p{  
    color:rgb(178, 162, 180)  
}
```

If you want to add a text shadow in that color use the text-shadow property, you can generate a text shadow directly with our [CSS Text Shadow Generator](#).

Here you see how black text with a 4 pixel rgb(178, 162, 180) colored shadow looks like.

```
.shadow{ text-shadow: 4px 4px 2px rgb(178, 162, 180) }
```

Border

The CSS property to change the border of an element to Android 4289897140 is called "border". The border property can be set on classes, ids or directly on the HTML element.

This example shows the color as border, it can be applied via the CSS property "border" or "border-color".

```
.border, #border, table{ border:4px solid rgb(178, 162, 180) }
```

If only the border color should be changed use the property border-color.

```
.border{ border-color:rgb(178, 162, 180) }
```

If you want to add a box shadow in that color use:

Here you see how a box with a 4 pixel rgb(178, 162, 180) colored shadow looks like.

```
.boxshadow{ -moz-box-shadow:4px 4px 4px  
4px rgb(178, 162, 180); -webkit-box-  
shadow:4px 4px 4px 4px rgb(178, 162, 180);  
box-shadow:4px 4px 4px 4px rgb(178, 162,  
180) }
```

Background

The CSS property to change the background color of an element to Android 4289897140 is called "background". The background property can be set on classes, ids or directly on the HTML element.

```
.background, #background, body{  
background: rgb(178, 162, 180) }
```

If only the background color should be changed can be used:

```
.background{ background-color: rgb(178,  
162, 180) }
```

This example shows the color as background, it is applied via the CSS property "background".

To optimize and compress your CSS code, you can use our [online CSS compressor and optimizer](#) based on csstidy. If you want to create a linear or radial gradient as background or border, check our [CSS Gradient Generator](#).

Hey! You found this booklet interesting? Support Converting Colors with the new Membership Option!

The pro membership hides all ads, plus gives you double the colors in the color bucket, and more awesome pro features!

[Learn more, Memberships starting at \\$2.50/m!](#)

**Follow me
on Twitter!**

@ConvertingColor