

Converting Colors

Android(4289952126)

Have a look what the booklet for
Android(4289952126) contains.

Android(4289952126)	3
<i>Conversions</i>	4
<i>Details</i>	6
<i>Harmonies</i>	11
<i>Previews</i>	23
<i>Color Blindness Simulation</i>	26
<i>CSS Examples</i>	29

Color

Android(4289952126)

Conversions

Conversions Part 1

Format	Color
Hex	B3797E
RGB	179, 121, 126
RGB Percent	70%, 47%, 49%
CMY	0.2980, 0.5255, 0.5059
CMYK	0.00, 0.32, 0.30, 0.30
HSL	355°, 28%, 59%
HSV	355°, 32%, 70%
XYZ	29.1937, 24.7648, 22.9801
YIQ	138.9120, 32.9630, 13.8510

Conversions

Conversions Part 2

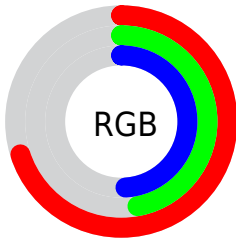
Format	Color
R_{YB}	179, 121, 126
Decimal	11762046
CIE Lab	56.85, 23.37, 6.52
CIE LCh	57, 24.258, 15.589
Yxy	24.7648, 0.3794, 0.3219
Android (android.graphics.Color)	4289952126 (0xFFB3797E)
YUV	138.9120, -6.3656, 35.1572
Hunter-Lab	49.7643, 17.6277, 7.4561

Details

The Android color `4289952126` is a dark color, and the websafe version is hex `996666`. A complement of this color would be `4286165934`, and the grayscale version is `4287335307`.

A 20% lighter version of the original color is `4293701299`, and `4286400589` is the 20% darker color. If you saturate the color by 10%, you get `4289947502`, and if you desaturate by 10%, it is `4289956750`.

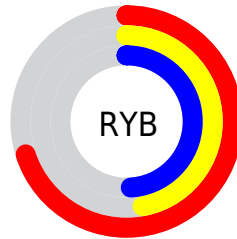
Distribution



Red (70%)

Green (47%)

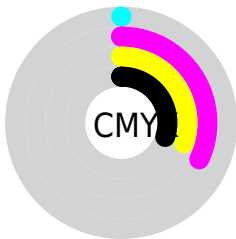
Blue (49%)



Red (70%)

Yellow (47%)

Blue (49%)

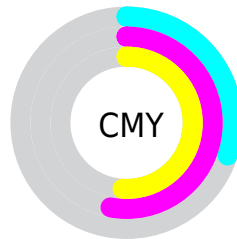


Cyan (0%)

Magenta (32%)

Yellow (30%)

Black (30%)



Cyan (30%)

Magenta (53%)

Yellow (51%)

Brightness & Saturation Gradients

These gradients show how the Android color 4289952126 changes by changing the brightness by 10 percent. The first figure shows a shift by +10% for each color and the second figure -10%.

Similar to the brightness gradients but the following saturation gradients show a change of the Android color 4289952126 by changing the saturation by 10% instead.



4289952126



4289952126

4294967295



4288110693



4293701299



4286400589



4294953422



4284690486



4294960874



4282980897



4281402122



4279566336



4278190080



4289952126



4289952126



4289947502



4289956750

 4289942877

 4289961375

 4289938253

 4289965999

 4289933629

 4289970623

 4289929260

 4289975248

 4289924636

 4289979616

 4289921039

 4289984240

 4289986559

Harmonies

Analogous

The Analogous color harmony consists of three colors that are next to each other on the color wheel.



4289493651



4289952126



4289690987

Triad

The Triadic color harmony groups three colors that are evenly spaced from another and form a triangle on the color wheel.



4289952126



4285829226



4284452273

Complementary

The Complementary color scheme is a pair of colors which are on the opposite of each other on the color wheel.



4289952126



4286165934

Split Complementary

Split-complementary colors differ from the complementary color scheme. The scheme consists of three colors, the original color and two neighbors of the complement color.



4283011750



4289952126



4284257149

Square

The Square scheme is like the rectangle color scheme, but the four colors are evenly spaced on the color wheel.



4289952126



4287400799



4283077779



4286416817

Rectangle

The Rectangle color scheme consists of four colors that form a rectangle on the color wheel.



4289952126



4289102178



4283077779



4283862958

Sweetspot

The Sweet Spot groups the original color and five complimentary colors.



4289952126



4293448147



4289558963



4285884264



4294309365



4285887861

Same Dimension

The Same Dimension uses a secret algorithm to generate beautiful new colors.



4289952126



4293430933



4289958009



4284043345



4288217101



4279894018

Inverse Universe

The Inverse Universe completely reimagines the original color for something new.



4289952126



4293430933



4286160051



4284043345



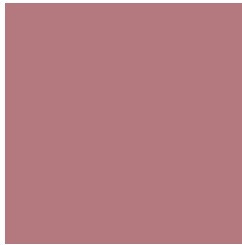
4288217101



4279894018

Previews

White Background



This preview shows how the Android color 4289952126 looks on a white background.

Color Contrast Check

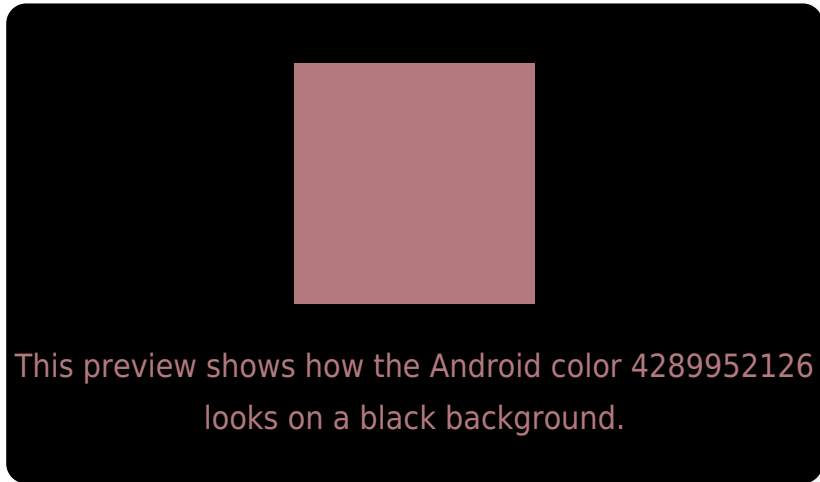
Large Text (above 18pt) WCAG AA ✓ Pass

Any Text WCAG AA ✗ Fail

Large Text (above 18pt) WCAG AAA ✗ Fail

Any Text WCAG AAA ✗ Fail

Black Background



Color Contrast Check

Large Text (above 18pt) WCAG AA ✓ Pass

Any Text WCAG AA ✓ Pass

Large Text (above 18pt) WCAG AAA ✓ Pass

Any Text WCAG AAA × Fail

If you want to check with other color combinations, try the [Color Contrast Checker](#).

Android 4289952126 Background



This preview shows how black text looks on a background with the Android color 4289952126.




This preview shows how white text looks on a background with the Android color 4289952126.

Color Blindness Simulation

Color vision deficiency is a very complex topic, and I could not describe the different causes any better than Wikipedia does, so if you want to learn more, you should check out their [article about color blindness](#).

Dichromacy





Tritanopia
4289951874

Trichromacy



Original Color
4289952126

Protanomaly
4288316291

Deuteranomaly
4288970877

Tritanomaly
4289951873

Monochromacy



Original Color
4289952126

Achromatopsia
4287335307

Achromatomaly
4288316550

CSS Examples

Text

The CSS property to change the color of the text to Android 4289952126 is called "color". The color property can be set on classes, ids or directly on the HTML element.

This example shows how text in the color `rgb(179, 121, 126)` looks like.

```
.text, #text, p{  
    color:rgb(179, 121, 126)  
}
```

If you want to add a text shadow in that color use the text-shadow property, you can generate a text shadow directly with our [CSS Text Shadow Generator](#).

Here you see how black text with a 4 pixel rgb(179, 121, 126) colored shadow looks like.

```
.shadow{ text-shadow: 4px 4px 2px rgb(179, 121, 126) }
```

Border

The CSS property to change the border of an element to Android 4289952126 is called "border". The border property can be set on classes, ids or directly on the HTML element.

This example shows the color as border, it can be applied via the CSS property "border" or "border-color".

```
.border, #border, table{ border:4px solid rgb(179, 121, 126) }
```

If only the border color should be changed use the property `border-color`.

```
.border{ border-color:rgb(179, 121, 126) }
```

If you want to add a box shadow in that color use:

Here you see how a box with a 4 pixel `rgb(179, 121, 126)` colored shadow looks like.

```
.boxshadow{ -moz-box-shadow:4px 4px 4px  
4px rgb(179, 121, 126); -webkit-box-  
shadow:4px 4px 4px 4px rgb(179, 121, 126);  
box-shadow:4px 4px 4px 4px rgb(179, 121,  
126) }
```

Background

The CSS property to change the background color of an element to Android 4289952126 is called "background". The background property can be set on classes, ids or directly on the HTML element.

```
.background, #background, body{  
background: rgb(179, 121, 126) }
```

If only the background color should be changed can be used:

```
.background{ background-color: rgb(179,  
121, 126) }
```

This example shows the color as background, it is applied via the CSS property "background".

To optimize and compress your CSS code, you can use our [online CSS compressor and optimizer](#) based on csstidy. If you want to create a linear or radial gradient as background or border, check our [CSS Gradient Generator](#).

Hey! You found this booklet interesting? Support Converting Colors with the new Membership Option!

The pro membership hides all ads, plus gives you double the colors in the color bucket, and more awesome pro features!

[Learn more, Memberships starting at \\$2.50/m!](#)

**Follow me
on Twitter!**

@ConvertingColor