

# Converting Colors

Android(4289954443)

Have a look what the booklet for  
Android(4289954443) contains.

<b>Android(4289954443)</b> .....	3
<b><i>Conversions</i></b> .....	4
<b><i>Details</i></b> .....	6
<b><i>Harmonies</i></b> .....	11
<b><i>Previews</i></b> .....	23
<b><i>Color Blindness Simulation</i></b> .....	26
<b><i>CSS Examples</i></b> .....	29

# **Color**

**Android(4289954443)**

# Conversions

## Conversions Part 1

Format	Color
Hex	B3828B
RGB	179, 130, 139
RGB Percent	70%, 51%, 55%
CMY	0.2980, 0.4902, 0.4549
CMYK	0.00, 0.27, 0.22, 0.30
HSL	349°, 24%, 61%
HSV	349°, 27%, 70%
XYZ	31.2332, 27.4130, 28.0712
YIQ	145.6770, 26.3150, 13.1870

# Conversions

## Conversions Part 2

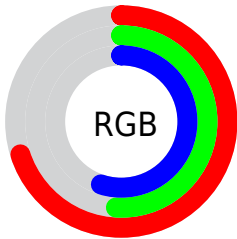
<b>Format</b>	<b>Color</b>
<b>RYB</b>	179, 130, 139
Decimal	11764363
CIELab	59.35, 20.23, 2.63
CIElCh	59, 20.400, 7.410
Yxy	27.4130, 0.3602, 0.3161
Android (android.graphics.Color)	4289954443 (0xFFB3828B)
YUV	145.6770, -3.2918, 29.2243
Hunter-Lab	52.3575, 14.8565, 4.8622

# Details

The Android color `4289954443` is a light color, and the websafe version is hex `CC9999`. A complement of this color would be `4286755754`, and the grayscale version is `4287795858`.

A 20% lighter version of the original color is `4293703616`, and `4286402649` is the 20% darker color. If you saturate the color by 10%, you get `4289949820`, and if you desaturate by 10%, it is `4289959066`.

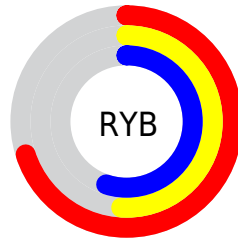
# Distribution



Red (70%)

Green (51%)

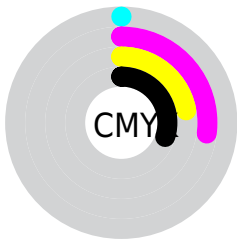
Blue (55%)



Red (70%)

Yellow (51%)

Blue (55%)

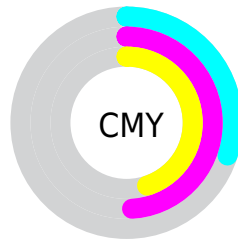


Cyan (0%)

Magenta (27%)

Yellow (22%)

Black (30%)



Cyan (30%)

Magenta (49%)

Yellow (45%)

# Brightness & Saturation Gradients

These gradients show how the Android color 4289954443 changes by changing the brightness by 10 percent. The first figure shows a shift by +10% for each color and the second figure -10%.

Similar to the brightness gradients but the following saturation gradients show a change of the Android color 4289954443 by changing the saturation by 10% instead.



 4289954443

 4289954443

4294967295

 4288178546

 4293703616

 4286402649

 4294955996

 4284758338

 4294963193

 4283114028

 4281535767

 4280221697

 4278190080

 4289954443

 4289954443

 4289949820

 4289959066

 4289945198

 4289963688

 4289940575

 4289968311

 4289935953

 4289972933

 4289931586

 4289977300

 4289926963

 4289981923

 4289922341

 4289986545

 4289921057

 4289986559

# Harmonies

## Analogous

The Analogous color harmony consists of three colors that are next to each other on the color wheel.



4289365149



4289954443



4289889402

# Triad

The Triadic color harmony groups three colors that are evenly spaced from another and form a triangle on the color wheel.



4289954443



4286878834



4285109423

# Complementary

The Complementary color scheme is a pair of colors which are on the opposite of each other on the color wheel.



4289954443



4286755754

# Split Complementary

Split-complementary colors differ from the complementary color scheme. The scheme consists of three colors, the original color and two neighbors of the complement color.



4284258468



4289954443



4285569153

# Square

The Square scheme is like the rectangle color scheme, but the four colors are evenly spaced on the color wheel.



4289954443



4288188267



4284520851



4286549938

# Rectangle

The Rectangle color scheme consists of four colors that form a rectangle on the color wheel.



4289954443



4289496945



4284520851



4284716716



# Sweetspot

The Sweet Spot groups the original color and five complimentary colors.



4289954443



4293449177



4289299123



4285885036



4294309365



4285887861



# Same Dimension

The Same Dimension uses a secret algorithm to generate beautiful new colors.



4289954443



4293434282



4289958274



4284043346



4288217116



4279894021



# Inverse Universe

The Inverse Universe completely reimagines the original color for something new.



4289954443



4293434282



4286751923



4284043346



4288217116

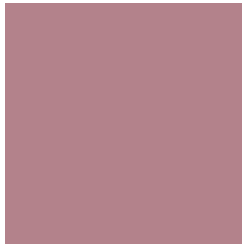


4279894021



# Previews

## White Background



This preview shows how the Android color 4289954443 looks on a white background.

## Color Contrast Check

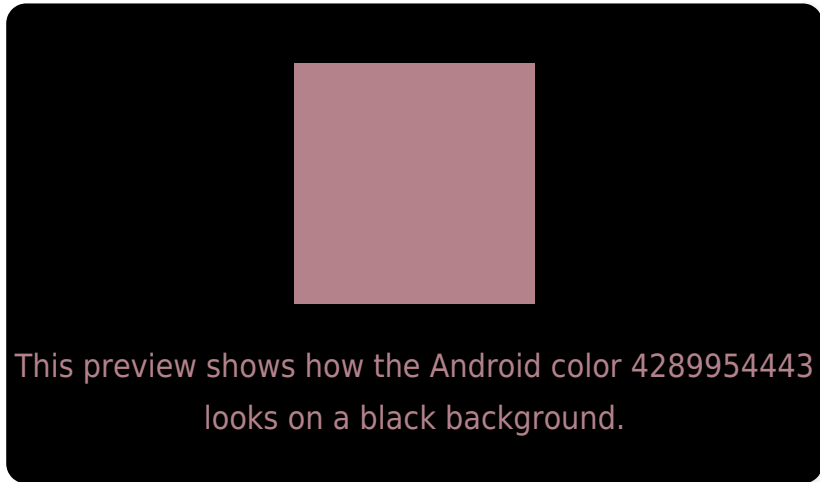
Large Text (above 18pt) WCAG AA ✓ Pass

Any Text WCAG AA ✗ Fail

Large Text (above 18pt) WCAG AAA ✗ Fail

Any Text WCAG AAA ✗ Fail

# Black Background



## Color Contrast Check

Large Text (above 18pt) WCAG AA ✓ Pass

Any Text WCAG AA ✓ Pass

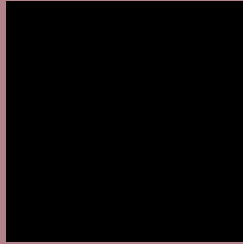
Large Text (above 18pt) WCAG AAA ✓ Pass

Any Text WCAG AAA × Fail

If you want to check with other color combinations, try the [Color Contrast Checker](#).



# Android 4289954443 Background



This preview shows how black text looks on a background with the Android color 4289954443.



This preview shows how white text looks on a background with the Android color 4289954443.

# Color Blindness Simulation

Color vision deficiency is a very complex topic, and I could not describe the different causes any better than Wikipedia does, so if you want to learn more, you should check out their [article about color blindness](#).

## Dichromacy



**Original Color**  
4289954443

**Protanopia**  
4287729298

**Deuteranopia**  
4288645769



**Tritanopia**  
4289954444

# Trichromacy



**Original Color**

4289954443

**Protanomaly**

4288514703

**Deuteranomaly**

4289103754

**Tritanomaly**

4289954444

# Monochromacy



**Original Color**

4289954443

**Achromatopsia**

4287795858

**Achromatomaly**

4288580751

# CSS Examples

## Text

The CSS property to change the color of the text to Android 4289954443 is called "color". The color property can be set on classes, ids or directly on the HTML element.

This example shows how text in the color `rgb(179, 130, 139)` looks like.

```
.text, #text, p{  
    color:rgb(179, 130, 139)  
}
```

If you want to add a text shadow in that color use the text-shadow property, you can generate a text shadow directly with our [CSS Text Shadow Generator](#).

Here you see how black text with a 4 pixel rgb(179, 130, 139) colored shadow looks like.

```
.shadow{ text-shadow: 4px 4px 2px rgb(179, 130, 139) }
```

## Border

The CSS property to change the border of an element to Android 4289954443 is called "border". The border property can be set on classes, ids or directly on the HTML element.

This example shows the color as border, it can be applied via the CSS property "border" or "border-color".

```
.border, #border, table{ border:4px solid rgb(179, 130, 139) }
```

If only the border color should be changed use the property `border-color`.

```
.border{ border-color:rgb(179, 130, 139) }
```

If you want to add a box shadow in that color use:

Here you see how a box with a 4 pixel `rgb(179, 130, 139)` colored shadow looks like.

```
.boxshadow{ -moz-box-shadow:4px 4px 4px  
4px rgb(179, 130, 139); -webkit-box-  
shadow:4px 4px 4px 4px rgb(179, 130, 139);  
box-shadow:4px 4px 4px 4px rgb(179, 130,  
139) }
```

# Background

The CSS property to change the background color of an element to Android 4289954443 is called "background". The background property can be set on classes, ids or directly on the HTML element.

```
.background, #background, body{  
background: rgb(179, 130, 139) }
```

If only the background color should be changed can be used:

```
.background{ background-color: rgb(179,  
130, 139) }
```

This example shows the color as background, it is applied via the CSS property "background".

To optimize and compress your CSS code, you can use our [online CSS compressor and optimizer](#) based on csstidy. If you want to create a linear or radial gradient as background or border, check our [CSS Gradient Generator](#).



Hey! You found this booklet interesting? Support Converting Colors with the new Membership Option!

The pro membership hides all ads, plus gives you double the colors in the color bucket, and more awesome pro features!

**[Learn more, Memberships starting at \\$2.50/m!](#)**

**Follow me  
on Twitter!**

@ConvertingColor