

# Converting Colors

Android(4289955419)

Have a look what the booklet for  
Android(4289955419) contains.

<b>Android(4289955419)</b> .....	3
<b><i>Conversions</i></b> .....	4
<b><i>Details</i></b> .....	6
<b><i>Harmonies</i></b> .....	11
<b><i>Previews</i></b> .....	23
<b><i>Color Blindness Simulation</i></b> .....	26
<b><i>CSS Examples</i></b> .....	29

# Color

**Android(4289955419)**

# Conversions

## Conversions Part 1

<b>Format</b>	<b>Color</b>
Hex	B3865B
RGB	179, 134, 91
RGB Percent	70%, 53%, 36%
CMY	0.2980, 0.4745, 0.6431
CMYK	0.00, 0.25, 0.49, 0.30
HSL	29°, 37%, 53%
HSV	29°, 49%, 70%
XYZ	29.0038, 27.3892, 13.6555
YIQ	142.5530, 40.6230, -3.8330

# Conversions

## Conversions Part 2

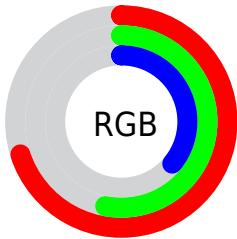
<b>Format</b>	<b>Color</b>
<b>RYB</b>	179, 175, 91
Decimal	11765339
CIELab	59.33, 11.91, 29.77
CIELCh	59, 32.068, 68.196
Yxy	27.3892, 0.4141, 0.3910
Android (android.graphics.Color)	4289955419 (0xFFB3865B)
YUV	142.5530, -25.4156, 31.9640
Hunter-Lab	52.3347, 7.3387, 21.1640

# Details

The Android color `4289955419` is a dark color, and the websafe version is hex `CC9966`. A complement of this color would be `4284188851`, and the grayscale version is `4287598479`.

A 20% lighter version of the original color is `4293770126`, and `4286338092` is the 20% darker color. If you saturate the color by 10%, you get `4289953097`, and if you desaturate by 10%, it is `4289957741`.

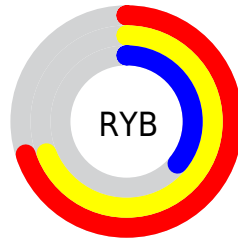
# Distribution



Red (70%)

Green (53%)

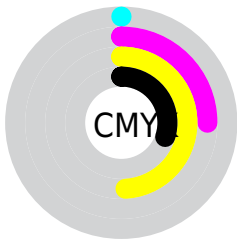
Blue (36%)



Red (70%)

Yellow (69%)

Blue (36%)

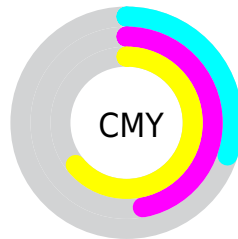


Cyan (0%)

Magenta (25%)

Yellow (49%)

Black (30%)



Cyan (30%)

Magenta (47%)

Yellow (64%)

# Brightness & Saturation Gradients

These gradients show how the Android color 4289955419 changes by changing the brightness by 10 percent. The first figure shows a shift by +10% for each color and the second figure -10%.

Similar to the brightness gradients but the following saturation gradients show a change of the Android color 4289955419 by changing the saturation by 10% instead.





4289955419



4289955419

4294967295



4288113987



4293770126



4286338092



4294956968



4284562710



4294964164



4282918656



4294967264



4281209600

4294967293



4279500800



4278190080



4289955419



4289955419



4289953097



4289957741

■ 4289950775

■ 4289960063

■ 4289948453

■ 4289962385

■ 4289945875

■ 4289964963

■ 4289943554

■ 4289967285

■ 4289943296

■ 4289969606

■ 4289971928

■ 4289974250

■ 4289976572

# Harmonies

## Analogous

The Analogous color harmony consists of three colors that are next to each other on the color wheel.



4291001709



4289955419



4288319574

# Triad

The Triadic color harmony groups three colors that are evenly spaced from another and form a triangle on the color wheel.



4289955419



4281573014



4288447931

# Complementary

The Complementary color scheme is a pair of colors which are on the opposite of each other on the color wheel.



4289955419



4284188851

# Split Complementary

Split-complementary colors differ from the complementary color scheme. The scheme consists of three colors, the original color and two neighbors of the complement color.



4285763526



4289955419



4280196273

# Square

The Square scheme is like the rectangle color scheme, but the four colors are evenly spaced on the color wheel.



4289955419



4284062841



4282619842



4290346148

# Rectangle

The Rectangle color scheme consists of four colors that form a rectangle on the color wheel.



4289955419



4287010140



4282619842



4287662272



# Sweetspot

The Sweet Spot groups the original color and five complimentary colors.



4289955419



4293449413



4289944456



4285885280



4294309365



4285887861



# Same Dimension

The Same Dimension uses a secret algorithm to generate beautiful new colors.



4289955419



4293435999



4289966683



4284044624



4288236288



4279897088



# Inverse Universe

The Inverse Universe completely reimagines the original color for something new.



4284188851



4284458472



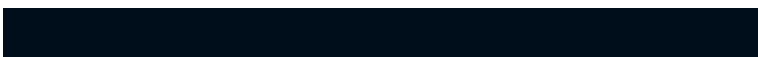
4284177587



4283454809



4278210201

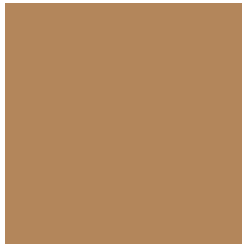


4278193434



# Previews

## White Background



This preview shows how the Android color 4289955419 looks on a white background.

## Color Contrast Check

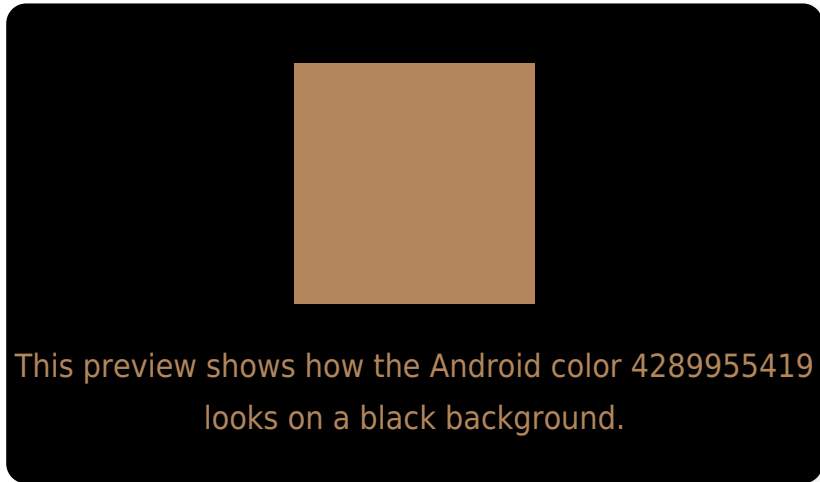
Large Text (above 18pt) WCAG AA ✓ Pass

Any Text WCAG AA ✗ Fail

Large Text (above 18pt) WCAG AAA ✗ Fail

Any Text WCAG AAA ✗ Fail

# Black Background



## Color Contrast Check

Large Text (above 18pt) WCAG AA ✓ Pass

Any Text WCAG AA ✓ Pass

Large Text (above 18pt) WCAG AAA ✓ Pass

Any Text WCAG AAA × Fail

If you want to check with other color combinations, try the [Color Contrast Checker](#).



# Android 4289955419 Background



This preview shows how black text looks on a background with the Android color 4289955419.



This preview shows how white text looks on a background with the Android color 4289955419.

# Color Blindness Simulation

Color vision deficiency is a very complex topic, and I could not describe the different causes any better than Wikipedia does, so if you want to learn more, you should check out their [article about color blindness](#).

## Dichromacy



**Original Color**  
4289955419

**Protanopia**  
4288384863

**Deuteranopia**  
4289562970



# Trichromacy



**Original Color**  
4289955419

**Protanomaly**  
4288973918

**Deuteranomaly**  
4289693786

**Tritanomaly**  
4290151033

# Monochromacy



**Original Color**  
4289955419

**Achromatopsia**  
4287598479

**Achromatomaly**  
4288449660

# CSS Examples

## Text

The CSS property to change the color of the text to Android 4289955419 is called "color". The color property can be set on classes, ids or directly on the HTML element.

This example shows how text in the color `rgb(179, 134, 91)` looks like.

```
.text, #text, p{  
    color:rgb(179, 134, 91)  
}
```

If you want to add a text shadow in that color use the text-shadow property, you can generate a text shadow directly with our [CSS Text Shadow Generator](#).

Here you see how black text with a 4 pixel rgb(179, 134, 91) colored shadow looks like.

```
.shadow{ text-shadow: 4px 4px 2px rgb(179, 134, 91) }
```

## Border

The CSS property to change the border of an element to Android 4289955419 is called "border". The border property can be set on classes, ids or directly on the HTML element.

This example shows the color as border, it can be applied via the CSS property "border" or "border-color".

```
.border, #border, table{ border:4px solid rgb(179, 134, 91) }
```

If only the border color should be changed use the property `border-color`.

```
.border{ border-color:rgb(179, 134, 91) }
```

If you want to add a box shadow in that color use:

Here you see how a box with a 4 pixel `rgb(179, 134, 91)` colored shadow looks like.

```
.boxshadow{ -moz-box-shadow:4px 4px 4px  
4px rgb(179, 134, 91); -webkit-box-  
shadow:4px 4px 4px 4px rgb(179, 134, 91);  
box-shadow:4px 4px 4px 4px rgb(179, 134,  
91) }
```

# Background

The CSS property to change the background color of an element to Android 4289955419 is called "background". The background property can be set on classes, ids or directly on the HTML element.

```
.background, #background, body{  
background: rgb(179, 134, 91) }
```

If only the background color should be changed can be used:

```
.background{ background-color: rgb(179,  
134, 91) }
```

This example shows the color as background, it is applied via the CSS property "background".

To optimize and compress your CSS code, you can use our [online CSS compressor and optimizer](#) based on csstidy. If you want to create a linear or radial gradient as background or border, check our [CSS Gradient Generator](#).



Hey! You found this booklet interesting? Support Converting Colors with the new Membership Option!

The pro membership hides all ads, plus gives you double the colors in the color bucket, and more awesome pro features!

**[Learn more, Memberships starting at \\$2.50/m!](#)**

**Follow me  
on Twitter!**

@ConvertingColor