

# Converting Colors

Android(4289955456)

Have a look what the booklet for  
Android(4289955456) contains.

<b>Android(4289955456)</b> .....	3
<b><i>Conversions</i></b> .....	4
<b><i>Details</i></b> .....	6
<b><i>Harmonies</i></b> .....	11
<b><i>Previews</i></b> .....	23
<b><i>Color Blindness Simulation</i></b> .....	26
<b><i>CSS Examples</i></b> .....	29

# **Color**

**Android(4289955456)**

# Conversions

## Conversions Part 1

<b>Format</b>	<b>Color</b>
Hex	B38680
RGB	179, 134, 128
RGB Percent	70%, 53%, 50%
CMY	0.2980, 0.4745, 0.4980
CMYK	0.00, 0.25, 0.28, 0.30
HSL	7°, 25%, 60%
HSV	7°, 28%, 70%
XYZ	31.0118, 28.1924, 24.2293
YIQ	146.7710, 28.7460, 7.6740

# Conversions

## Conversions Part 2

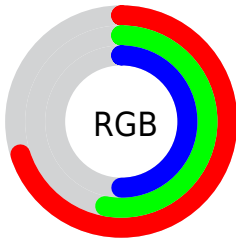
<b>Format</b>	<b>Color</b>
<b>RYB</b>	179, 135, 128
Decimal	11765376
CIELab	60.06, 16.36, 9.95
CIELCh	60, 19.148, 31.290
Yxy	28.1924, 0.3717, 0.3379
Android (android.graphics.Color)	4289955456 (0xFFB38680)
YUV	146.7710, -9.2541, 28.2648
Hunter-Lab	53.0965, 11.3365, 10.1121

# Details

The Android color `4289955456` is a light color, and the websafe version is hex `CC9999`. A complement of this color would be `4286623155`, and the grayscale version is `4287861651`.

A 20% lighter version of the original color is `4293704629`, and `4286403663` is the 20% darker color. If you saturate the color by 10%, you get `4289951342`, and if you desaturate by 10%, it is `4289959570`.

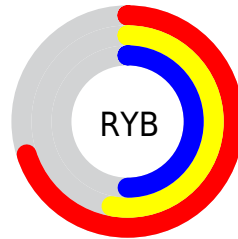
# Distribution



Red (70%)

Green (53%)

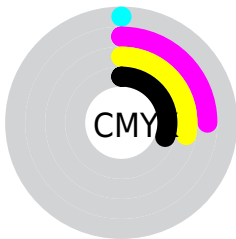
Blue (50%)



Red (70%)

Yellow (53%)

Blue (50%)

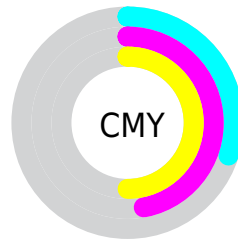


Cyan (0%)

Magenta (25%)

Yellow (28%)

Black (30%)



Cyan (30%)

Magenta (47%)

Yellow (50%)

# Brightness & Saturation Gradients

These gradients show how the Android color 4289955456 changes by changing the brightness by 10 percent. The first figure shows a shift by +10% for each color and the second figure -10%.

Similar to the brightness gradients but the following saturation gradients show a change of the Android color 4289955456 by changing the saturation by 10% instead.



 4289955456

 4289955456

4294967295

 4288179559

 4293704629

 4286403663

 4294957008

 4284693816

 4294964461

 4283049507

 4281536781

 4280156161

 4278190080

 4289955456

 4289955456

 4289951342

 4289959570

 4289947228

 4289963684

 4289943370

 4289967542

 4289939256

 4289971656

 4289935143

 4289975770

 4289931029

 4289979883

 4289926915

 4289983997

 4289926400

 4289986559

# Harmonies

## Analogous

The Analogous color harmony consists of three colors that are next to each other on the color wheel.



4289889681



4289955456



4289432180

# Triad

The Triadic color harmony groups three colors that are evenly spaced from another and form a triangle on the color wheel.



4289955456



4286028160



4286485170

# Complementary

The Complementary color scheme is a pair of colors which are on the opposite of each other on the color wheel.



4289955456



4286623155

# Split Complementary

Split-complementary colors differ from the complementary color scheme. The scheme consists of three colors, the original color and two neighbors of the complement color.



4285175726



4289955456



4284979857

# Square

The Square scheme is like the rectangle color scheme, but the four colors are evenly spaced on the color wheel.



4289955456



4287272308



4284586658



4287990957

# Rectangle

The Rectangle color scheme consists of four colors that form a rectangle on the color wheel.



4289955456



4288843376



4284586658



4285961394



# Sweetspot

The Sweet Spot groups the original color and five complimentary colors.



4289955456



4293449427



4289953965



4285885032



4294309365



4285887861



# Same Dimension

The Same Dimension uses a secret algorithm to generate beautiful new colors.



4289955456



4293436057



4289961856



4284043600



4288221696



4279894784



# Inverse Universe

The Inverse Universe completely reimagines the original color for something new.



4286623155



4288274408



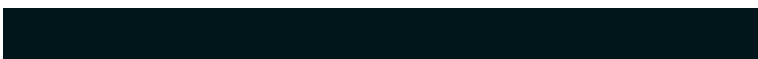
4286616755



4283455577



4278224793

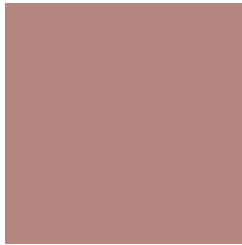


4278195738



# Previews

## White Background



This preview shows how the Android color 4289955456 looks on a white background.

## Color Contrast Check

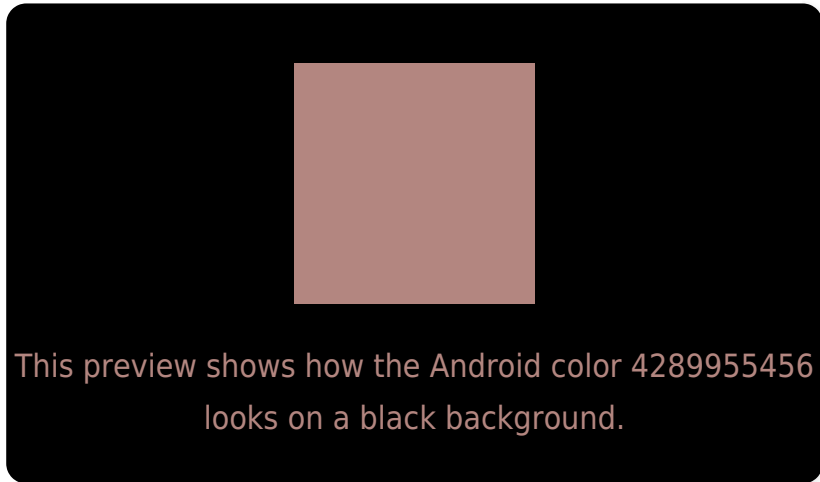
Large Text (above 18pt) WCAG AA ✓ Pass

Any Text WCAG AA ✗ Fail

Large Text (above 18pt) WCAG AAA ✗ Fail

Any Text WCAG AAA ✗ Fail

# Black Background



## Color Contrast Check

Large Text (above 18pt) WCAG AA ✓ Pass

Any Text WCAG AA ✓ Pass

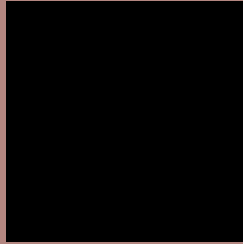
Large Text (above 18pt) WCAG AAA ✓ Pass

Any Text WCAG AAA × Fail

If you want to check with other color combinations, try the [Color Contrast Checker](#).



# Android 4289955456 Background



This preview shows how black text looks on a background with the Android color 4289955456.



This preview shows how white text looks on a background with the Android color 4289955456.

# Color Blindness Simulation

Color vision deficiency is a very complex topic, and I could not describe the different causes any better than Wikipedia does, so if you want to learn more, you should check out their [article about color blindness](#).

## Dichromacy





# Trichromacy



**Original Color**  
4289955456

**Protanomaly**  
4288777603

**Deuteranomaly**  
4289432191

**Tritanomaly**  
4290020745

# Monochromacy



**Original Color**  
4289955456

**Achromatopsia**  
4287861651

**Achromatomaly**  
4288646796

# CSS Examples

## Text

The CSS property to change the color of the text to Android 4289955456 is called "color". The color property can be set on classes, ids or directly on the HTML element.

This example shows how text in the color `rgb(179, 134, 128)` looks like.

```
.text, #text, p{  
    color:rgb(179, 134, 128)  
}
```

If you want to add a text shadow in that color use the text-shadow property, you can generate a text shadow directly with our [CSS Text Shadow Generator](#).

Here you see how black text with a 4 pixel rgb(179, 134, 128) colored shadow looks like.

```
.shadow{ text-shadow: 4px 4px 2px rgb(179, 134, 128) }
```

## Border

The CSS property to change the border of an element to Android 4289955456 is called "border". The border property can be set on classes, ids or directly on the HTML element.

This example shows the color as border, it can be applied via the CSS property "border" or "border-color".

```
.border, #border, table{ border:4px solid rgb(179, 134, 128) }
```

If only the border color should be changed use the property `border-color`.

```
.border{ border-color:rgb(179, 134, 128) }
```

If you want to add a box shadow in that color use:

Here you see how a box with a 4 pixel `rgb(179, 134, 128)` colored shadow looks like.

```
.boxshadow{ -moz-box-shadow:4px 4px 4px  
4px rgb(179, 134, 128); -webkit-box-  
shadow:4px 4px 4px 4px rgb(179, 134, 128);  
box-shadow:4px 4px 4px 4px rgb(179, 134,  
128) }
```

# Background

The CSS property to change the background color of an element to Android 4289955456 is called "background". The background property can be set on classes, ids or directly on the HTML element.

```
.background, #background, body{  
background: rgb(179, 134, 128) }
```

If only the background color should be changed can be used:

```
.background{ background-color: rgb(179,  
134, 128) }
```

This example shows the color as background, it is applied via the CSS property "background".

To optimize and compress your CSS code, you can use our [online CSS compressor and optimizer](#) based on csstidy. If you want to create a linear or radial gradient as background or border, check our [CSS Gradient Generator](#).



Hey! You found this booklet interesting? Support Converting Colors with the new Membership Option!

The pro membership hides all ads, plus gives you double the colors in the color bucket, and more awesome pro features!

**[Learn more, Memberships starting at \\$2.50/m!](#)**

**Follow me  
on Twitter!**

@ConvertingColor