

Converting Colors

Android(4289955940)

Have a look what the booklet for
Android(4289955940) contains.

Android(4289955940)	3
<i>Conversions</i>	4
<i>Details</i>	6
<i>Harmonies</i>	11
<i>Previews</i>	23
<i>Color Blindness Simulation</i>	26
<i>CSS Examples</i>	29

Color

Android(4289955940)

Conversions

Conversions Part 1

Format	Color
Hex	B38864
RGB	179, 136, 100
RGB Percent	70%, 53%, 39%
CMY	0.2980, 0.4667, 0.6078
CMYK	0.00, 0.24, 0.44, 0.30
HSL	27°, 34%, 55%
HSV	27°, 44%, 70%
XYZ	29.6948, 28.1121, 15.9177
YIQ	144.7530, 37.1840, -2.0800

Conversions

Conversions Part 2

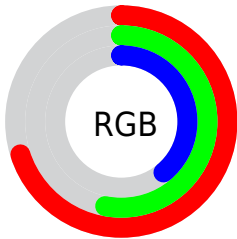
Format	Color
R_{YB}	179, 166, 100
Decimal	11765860
CIE _{Lab}	59.99, 11.73, 25.66
CIE _{LCh}	60, 28.213, 65.429
Yxy	28.1121, 0.4028, 0.3813
Android (android.graphics.Color)	4289955940 (0xFFB38864)
YUV	144.7530, -22.0632, 30.0346
Hunter-Lab	53.0209, 7.1840, 19.3148

Details

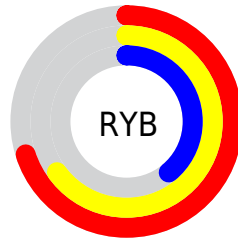
The Android color `4289955940` is a dark color, and the websafe version is hex `CC9966`. A complement of this color would be `4284780467`, and the grayscale version is `4287730065`.

A 20% lighter version of the original color is `4293705111`, and `4286338613` is the 20% darker color. If you saturate the color by 10%, you get `4289953362`, and if you desaturate by 10%, it is `4289958518`.

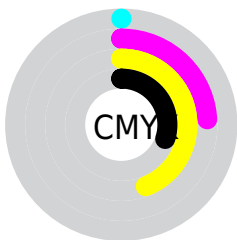
Distribution



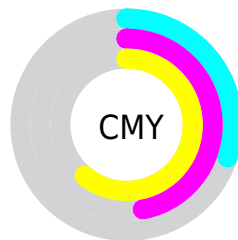
- Red (70%)
- Green (53%)
- Blue (39%)



- Red (70%)
- Yellow (65%)
- Blue (39%)



- Cyan (0%)
- Magenta (24%)
- Yellow (44%)
- Black (30%)



- Cyan (30%)
- Magenta (47%)
- Yellow (61%)

Brightness & Saturation Gradients

These gradients show how the Android color 4289955940 changes by changing the brightness by 10 percent. The first figure shows a shift by +10% for each color and the second figure -10%.

Similar to the brightness gradients but the following saturation gradients show a change of the Android color 4289955940 by changing the saturation by 10% instead.



4289955940



4289955940

4294967295



4288114508



4293705111



4286338613



4294957490



4284628767



4294964942



4282919176



4294967274



4281340928



4279762945



4278190080



4289955940



4289955940



4289953362



4289958518

 4289951040

 4289960840

 4289948462

 4289963418

 4289945884

 4289965996

 4289943306

 4289968574

 4289942016

 4289970895

 4289973473

 4289976051

 4289978623

Harmonies

Analogous

The Analogous color harmony consists of three colors that are next to each other on the color wheel.



4290806133



4289955940



4288516191

Triad

The Triadic color harmony groups three colors that are evenly spaced from another and form a triangle on the color wheel.



4289955940



4283014804



4288317881

Complementary

The Complementary color scheme is a pair of colors which are on the opposite of each other on the color wheel.



4289955940



4284780467

Split Complementary

Split-complementary colors differ from the complementary color scheme. The scheme consists of three colors, the original color and two neighbors of the complement color.



4285960642



4289955940



4282228140

Square

The Square scheme is like the rectangle color scheme, but the four colors are evenly spaced on the color wheel.



4289955940



4284849275



4283537853



4290019750

Rectangle

The Rectangle color scheme consists of four colors that form a rectangle on the color wheel.



4289955940



4287403363



4283537853



4287597757

Sweetspot

The Sweet Spot groups the original color and five complimentary colors.



4289955940



4293449930



4289946767



4285885283



4294309365



4285887861

Same Dimension

The Same Dimension uses a secret algorithm to generate beautiful new colors.



4289955940



4293436781



4289965924



4284044368



4288235008



4279897088

Inverse Universe

The Inverse Universe completely reimagines the original color for something new.



4284780467



4285378792



4284770483



4283454809



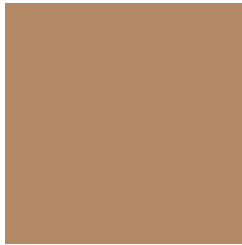
4278211481



4278193690

Previews

White Background



This preview shows how the Android color 4289955940 looks on a white background.

Color Contrast Check

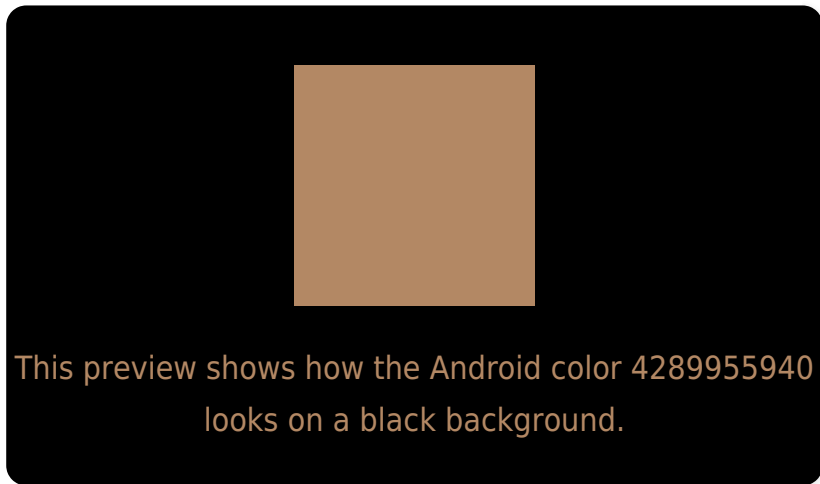
Large Text (above 18pt) WCAG AA ✓ Pass

Any Text WCAG AA ✗ Fail

Large Text (above 18pt) WCAG AAA ✗ Fail

Any Text WCAG AAA ✗ Fail

Black Background



Color Contrast Check

Large Text (above 18pt) WCAG AA ✓ Pass

Any Text WCAG AA ✓ Pass

Large Text (above 18pt) WCAG AAA ✓ Pass

Any Text WCAG AAA × Fail

If you want to check with other color combinations, try the [Color Contrast Checker](#).

Android 4289955940 Background



This preview shows how black text looks on a background with the Android color 4289955940.



This preview shows how white text looks on a background with the Android color 4289955940.

Color Blindness Simulation

Color vision deficiency is a very complex topic, and I could not describe the different causes any better than Wikipedia does, so if you want to learn more, you should check out their [article about color blindness](#).


Dichromacy



Original Color
4289955940

Protanopia
4288450920

Deuteranopia
4289563491



Tritanopia
4290216845

Trichromacy



Original Color
4289955940

Protanomaly
4288974439

Deuteranomaly
4289694307

Tritanomaly
4290151806

Monochromacy



Original Color
4289955940

Achromatopsia
4287730065

Achromatomaly
4288515713

CSS Examples

Text

The CSS property to change the color of the text to Android 4289955940 is called "color". The color property can be set on classes, ids or directly on the HTML element.

This example shows how text in the color `rgb(179, 136, 100)` looks like.

```
.text, #text, p{  
    color:rgb(179, 136, 100)  
}
```

If you want to add a text shadow in that color use the text-shadow property, you can generate a text shadow directly with our [CSS Text Shadow Generator](#).

Here you see how black text with a 4 pixel rgb(179, 136, 100) colored shadow looks like.

```
.shadow{ text-shadow: 4px 4px 2px rgb(179, 136, 100) }
```

Border

The CSS property to change the border of an element to Android 4289955940 is called "border". The border property can be set on classes, ids or directly on the HTML element.

This example shows the color as border, it can be applied via the CSS property "border" or "border-color".

```
.border, #border, table{ border:4px solid rgb(179, 136, 100) }
```

If only the border color should be changed use the property `border-color`.

```
.border{ border-color:rgb(179, 136, 100) }
```

If you want to add a box shadow in that color use:

Here you see how a box with a 4 pixel `rgb(179, 136, 100)` colored shadow looks like.

```
.boxshadow{ -moz-box-shadow:4px 4px 4px  
4px rgb(179, 136, 100); -webkit-box-  
shadow:4px 4px 4px 4px rgb(179, 136, 100);  
box-shadow:4px 4px 4px 4px rgb(179, 136,  
100) }
```

Background

The CSS property to change the background color of an element to Android 4289955940 is called "background". The background property can be set on classes, ids or directly on the HTML element.

```
.background, #background, body{  
background: rgb(179, 136, 100) }
```

If only the background color should be changed can be used:

```
.background{ background-color: rgb(179,  
136, 100) }
```

This example shows the color as background, it is applied via the CSS property "background".

To optimize and compress your CSS code, you can use our [online CSS compressor and optimizer](#) based on csstidy. If you want to create a linear or radial gradient as background or border, check our [CSS Gradient Generator](#).

Hey! You found this booklet interesting? Support Converting Colors with the new Membership Option!

The pro membership hides all ads, plus gives you double the colors in the color bucket, and more awesome pro features!

[Learn more, Memberships starting at \\$2.50/m!](#)

**Follow me
on Twitter!**

@ConvertingColor