

Converting Colors

Android(4289956229)

Have a look what the booklet for
Android(4289956229) contains.

Android(4289956229)	3
<i>Conversions</i>	4
<i>Details</i>	6
<i>Harmonies</i>	11
<i>Previews</i>	23
<i>Color Blindness Simulation</i>	26
<i>CSS Examples</i>	29

Color

Android(4289956229)

Conversions

Conversions Part 1

Format	Color
Hex	B38985
RGB	179, 137, 133
RGB Percent	70%, 54%, 52%
CMY	0.2980, 0.4627, 0.4784
CMYK	0.00, 0.23, 0.26, 0.30
HSL	5°, 23%, 61%
HSV	5°, 26%, 70%
XYZ	31.7697, 29.1685, 26.1459
YIQ	149.1020, 26.3160, 7.6600

Conversions

Conversions Part 2

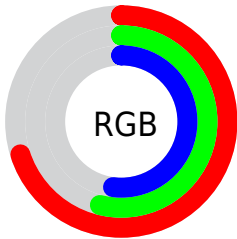
Format	Color
RYB	179, 137, 133
Decimal	11766149
CIELab	60.93, 15.40, 8.33
CIELCh	61, 17.510, 28.393
Yxy	29.1685, 0.3648, 0.3349
Android (android.graphics.Color)	4289956229 (0xFFB38985)
YUV	149.1020, -7.9383, 26.2205
Hunter-Lab	54.0079, 10.4875, 9.1024

Details

The Android color `4289956229` is a light color, and the websafe version is hex `CC9999`. A complement of this color would be `4286951347`, and the grayscale version is `4287993237`.

A 20% lighter version of the original color is `4293640122`, and `4286404436` is the 20% darker color. If you saturate the color by 10%, you get `4289952115`, and if you desaturate by 10%, it is `4289960343`.

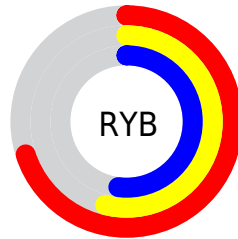
Distribution



Red (70%)

Green (54%)

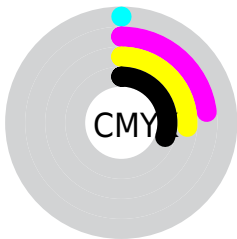
Blue (52%)



Red (70%)

Yellow (54%)

Blue (52%)

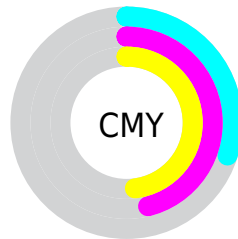


Cyan (0%)

Magenta (23%)

Yellow (26%)

Black (30%)



Cyan (30%)

Magenta (46%)

Yellow (48%)

Brightness & Saturation Gradients

These gradients show how the Android color 4289956229 changes by changing the brightness by 10 percent. The first figure shows a shift by +10% for each color and the second figure -10%.

Similar to the brightness gradients but the following saturation gradients show a change of the Android color 4289956229 by changing the saturation by 10% instead.



4289956229



4289956229

4294967295



4288180076



4293640122



4286404436



4294957782



4284759868



4294965234



4283115815



4281537554



4280221696



4278190080



4289956229



4289956229



4289952115



4289960343

 4289947745

 4289964713

 4289943631

 4289968827

 4289939517

 4289972941

 4289935148

 4289977311

 4289931034

 4289981424

 4289926920

 4289985535

 4289925120

 4289986559

Harmonies

Analogous

The Analogous color harmony consists of three colors that are next to each other on the color wheel.



4289824916



4289956229



4289564025

Triad

The Triadic color harmony groups three colors that are evenly spaced from another and form a triangle on the color wheel.



4289956229



4286421634



4286617010

Complementary

The Complementary color scheme is a pair of colors which are on the opposite of each other on the color wheel.



4289956229



4286951347

Split Complementary

Split-complementary colors differ from the complementary color scheme. The scheme consists of three colors, the original color and two neighbors of the complement color.



4285503917



4289956229



4285504658

Square

The Square scheme is like the rectangle color scheme, but the four colors are evenly spaced on the color wheel.



4289956229



4287600504



4285111201



4287991726

Rectangle

The Rectangle color scheme consists of four colors that form a rectangle on the color wheel.



4289956229



4289040501



4285111201



4286224049

Sweetspot

The Sweet Spot groups the original color and five complimentary colors.



4289956229



4293449685



4289955247



4285885290



4294309365



4285887861

Same Dimension

The Same Dimension uses a secret algorithm to generate beautiful new colors.



4289956229



4293437088



4289962117



4284043600



4288220416



4279894528

Inverse Universe

The Inverse Universe completely reimagines the original color for something new.



4286951347



4288733928



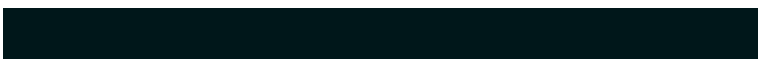
4286945459



4283455577



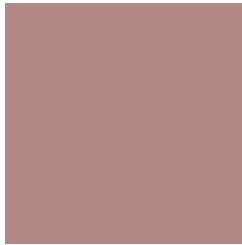
4278226073



4278195994

Previews

White Background



This preview shows how the Android color 4289956229 looks on a white background.

Color Contrast Check

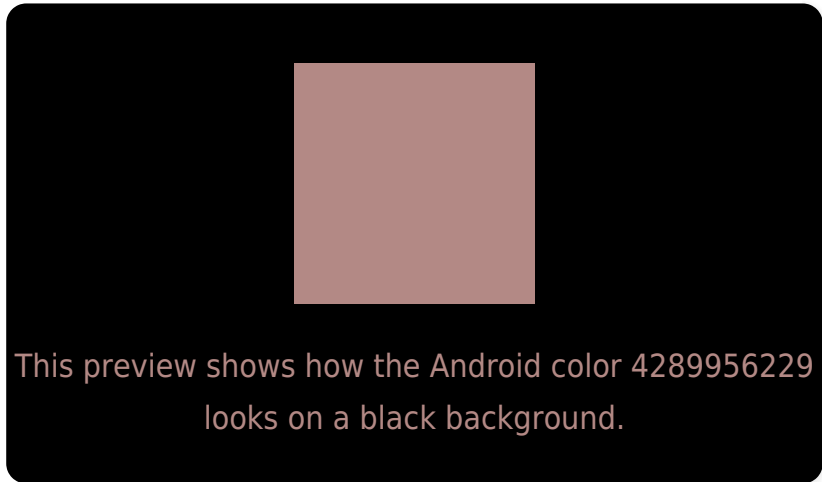
Large Text (above 18pt) WCAG AA ✓ Pass

Any Text WCAG AA ✗ Fail

Large Text (above 18pt) WCAG AAA ✗ Fail

Any Text WCAG AAA ✗ Fail

Black Background



Color Contrast Check

Large Text (above 18pt) WCAG AA ✓ Pass

Any Text WCAG AA ✓ Pass

Large Text (above 18pt) WCAG AAA ✓ Pass

Any Text WCAG AAA × Fail

If you want to check with other color combinations, try the [Color Contrast Checker](#).

Android 4289956229 Background



This preview shows how black text looks on a background with the Android color 4289956229.



This preview shows how white text looks on a background with the Android color 4289956229.

Color Blindness Simulation

Color vision deficiency is a very complex topic, and I could not describe the different causes any better than Wikipedia does, so if you want to learn more, you should check out their [article about color blindness](#).

Dichromacy



Original Color
4289956229

Protanopia
4288189322

Deuteranopia
4289171076



Tritanopia
4290021265

Trichromacy



Original Color
4289956229

Protanomaly
4288843656

Deuteranomaly
4289432708

Tritanomaly
4290021517

Monochromacy



Original Color
4289956229

Achromatopsia
4287993237

Achromatomaly
4288713103

CSS Examples

Text

The CSS property to change the color of the text to Android 4289956229 is called "color". The color property can be set on classes, ids or directly on the HTML element.

This example shows how text in the color `rgb(179, 137, 133)` looks like.

```
.text, #text, p{  
    color:rgb(179, 137, 133)  
}
```

If you want to add a text shadow in that color use the text-shadow property, you can generate a text shadow directly with our [CSS Text Shadow Generator](#).

Here you see how black text with a 4 pixel rgb(179, 137, 133) colored shadow looks like.

```
.shadow{ text-shadow: 4px 4px 2px rgb(179, 137, 133) }
```

Border

The CSS property to change the border of an element to Android 4289956229 is called "border". The border property can be set on classes, ids or directly on the HTML element.

This example shows the color as border, it can be applied via the CSS property "border" or "border-color".

```
.border, #border, table{ border:4px solid rgb(179, 137, 133) }
```

If only the border color should be changed use the property `border-color`.

```
.border{ border-color:rgb(179, 137, 133) }
```

If you want to add a box shadow in that color use:

Here you see how a box with a 4 pixel `rgb(179, 137, 133)` colored shadow looks like.

```
.boxshadow{ -moz-box-shadow:4px 4px 4px  
4px rgb(179, 137, 133); -webkit-box-  
shadow:4px 4px 4px 4px rgb(179, 137, 133);  
box-shadow:4px 4px 4px 4px rgb(179, 137,  
133) }
```

Background

The CSS property to change the background color of an element to Android 4289956229 is called "background". The background property can be set on classes, ids or directly on the HTML element.

```
.background, #background, body{  
background: rgb(179, 137, 133) }
```

If only the background color should be changed can be used:

```
.background{ background-color: rgb(179,  
137, 133) }
```

This example shows the color as background, it is applied via the CSS property "background".

To optimize and compress your CSS code, you can use our [online CSS compressor and optimizer](#) based on csstidy. If you want to create a linear or radial gradient as background or border, check our [CSS Gradient Generator](#).

Hey! You found this booklet interesting? Support Converting Colors with the new Membership Option!

The pro membership hides all ads, plus gives you double the colors in the color bucket, and more awesome pro features!

[Learn more, Memberships starting at \\$2.50/m!](#)

**Follow me
on Twitter!**

@ConvertingColor