

Converting Colors

Android(4289956717)

Have a look what the booklet for
Android(4289956717) contains.

Android(4289956717)	3
<i>Conversions</i>	4
<i>Details</i>	6
<i>Harmonies</i>	11
<i>Previews</i>	23
<i>Color Blindness Simulation</i>	26
<i>CSS Examples</i>	29

Color

Android(4289956717)

Conversions

Conversions Part 1

Format	Color
Hex	B38B6D
RGB	179, 139, 109
RGB Percent	70%, 55%, 43%
CMY	0.2980, 0.4549, 0.5725
CMYK	0.00, 0.22, 0.39, 0.30
HSL	26°, 32%, 56%
HSV	26°, 39%, 70%
XYZ	30.5833, 29.1531, 18.4832
YIQ	147.5400, 33.4700, -0.8500

Conversions

Conversions Part 2

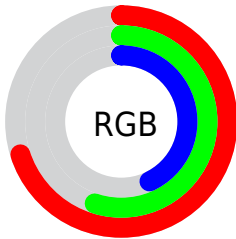
Format	Color
RYB	179, 162, 109
Decimal	11766637
CIELab	60.92, 11.09, 21.88
CIElCh	61, 24.525, 63.120
Yxy	29.1531, 0.3910, 0.3727
Android (android.graphics.Color)	4289956717 (0xFFB38B6D)
YUV	147.5400, -19.0002, 27.5904
Hunter-Lab	53.9936, 6.6182, 17.4992

Details

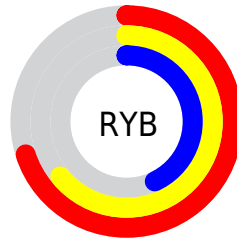
The Android color `4289956717` is a dark color, and the websafe version is hex `CC9966`, and the color name is `light taupe`. A complement of this color would be `4285371827`, and the grayscale version is `4287927444`.

A 20% lighter version of the original color is `4293706145`, and `4286404925` is the 20% darker color. If you saturate the color by 10%, you get `4289954139`, and if you desaturate by 10%, it is `4289959295`.

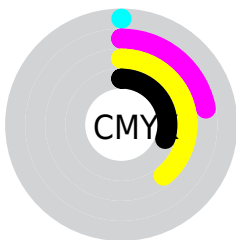
Distribution



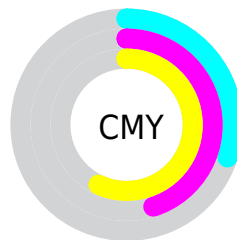
- Red (70%)
- Green (55%)
- Blue (43%)



- Red (70%)
- Yellow (64%)
- Blue (43%)



- Cyan (0%)
- Magenta (22%)
- Yellow (39%)
- Black (30%)



- Cyan (30%)
- Magenta (45%)
- Yellow (57%)

Brightness & Saturation Gradients

These gradients show how the Android color 4289956717 changes by changing the brightness by 10 percent. The first figure shows a shift by +10% for each color and the second figure -10%.

Similar to the brightness gradients but the following saturation gradients show a change of the Android color 4289956717 by changing the saturation by 10% instead.



4289956717



4289956717

4294967295



4288115285



4293706145



4286404925



4294958268



4284695079



4294965720



4282985234



4294967284



4281472768



4279894016



4278190080



4289956717



4289956717



4289954139



4289959295

 4289951561

 4289961873

 4289948727

 4289964707

 4289946149

 4289967285

 4289943572

 4289969863

 4289940994

 4289972440

 4289940736

 4289975274

 4289977852

 4289980415

Harmonies

Analogous

The Analogous color harmony consists of three colors that are next to each other on the color wheel.



4290676092



4289956717



4288713320

Triad

The Triadic color harmony groups three colors that are evenly spaced from another and form a triangle on the color wheel.



4289956717



4284129173



4288253367

Complementary

The Complementary color scheme is a pair of colors which are on the opposite of each other on the color wheel.



4289956717



4285371827

Split Complementary

Split-complementary colors differ from the complementary color scheme. The scheme consists of three colors, the original color and two neighbors of the complement color.



4286289086



4289956717



4283539114

Square

The Square scheme is like the rectangle color scheme, but the four colors are evenly spaced on the color wheel.



4289956717



4285570431



4284390073



4289824423

Rectangle

The Rectangle color scheme consists of four colors that form a rectangle on the color wheel.



4289956717



4287731563



4284390073



4287664059

Sweetspot

The Sweet Spot groups the original color and five complimentary colors.



4289956717



4293449932



4289949078



4285885541



4294309365



4285887861

Same Dimension

The Same Dimension uses a secret algorithm to generate beautiful new colors.



4289956717



4293438075



4289965421



4284044368



4288233984



4279896832

Inverse Universe

The Inverse Universe completely reimagines the original color for something new.



4285371827



4286298600



4285363123



4283454809



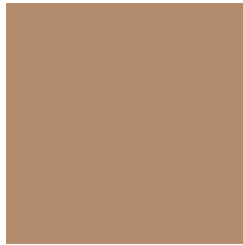
4278212505



4278193946

Previews

White Background



This preview shows how the Android color 4289956717 looks on a white background.

Color Contrast Check

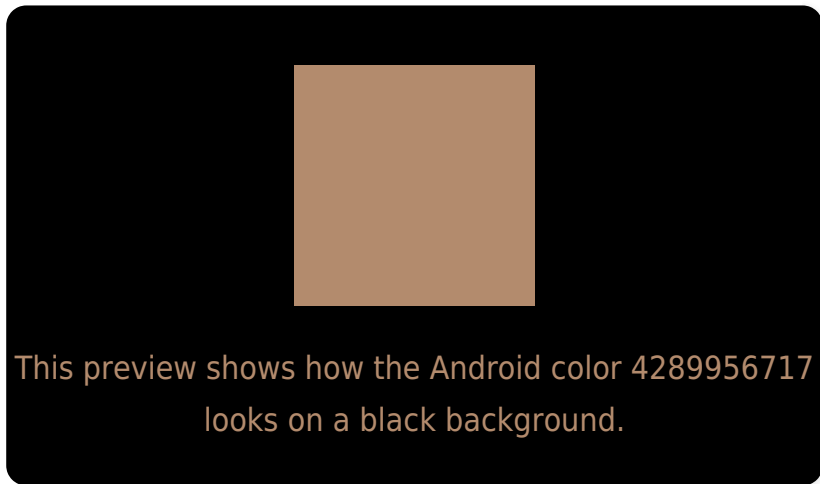
Large Text (above 18pt) WCAG AA ✓ Pass

Any Text WCAG AA ✗ Fail

Large Text (above 18pt) WCAG AAA ✗ Fail

Any Text WCAG AAA ✗ Fail

Black Background



Color Contrast Check

Large Text (above 18pt) WCAG AA ✓ Pass

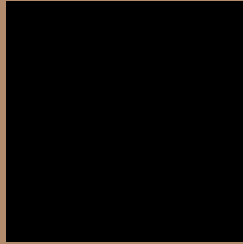
Any Text WCAG AA ✓ Pass

Large Text (above 18pt) WCAG AAA ✓ Pass

Any Text WCAG AAA × Fail

If you want to check with other color combinations, try the [Color Contrast Checker](#).

Android 4289956717 Background



This preview shows how black text looks on a background with the Android color 4289956717.



This preview shows how white text looks on a background with the Android color 4289956717.

Color Blindness Simulation

Color vision deficiency is a very complex topic, and I could not describe the different causes any better than Wikipedia does, so if you want to learn more, you should check out their [article about color blindness](#).


Dichromacy



Original Color
4289956717

Protanopia
4288516977

Deuteranopia
4289629549



Tritanopia
4290217616

Trichromacy



Original Color
4289956717

Protanomaly
4289040496

Deuteranomaly
4289760365

Tritanomaly
4290152579

Monochromacy



Original Color
4289956717

Achromatopsia
4287927444

Achromatomaly
4288647558

CSS Examples

Text

The CSS property to change the color of the text to Android 4289956717 is called "color". The color property can be set on classes, ids or directly on the HTML element.

This example shows how text in the color `rgb(179, 139, 109)` looks like.

```
.text, #text, p{  
    color:rgb(179, 139, 109)  
}
```

If you want to add a text shadow in that color use the text-shadow property, you can generate a text shadow directly with our [CSS Text Shadow Generator](#).

Here you see how black text with a 4 pixel rgb(179, 139, 109) colored shadow looks like.

```
.shadow{ text-shadow: 4px 4px 2px rgb(179, 139, 109) }
```

Border

The CSS property to change the border of an element to Android 4289956717 is called "border". The border property can be set on classes, ids or directly on the HTML element.

This example shows the color as border, it can be applied via the CSS property "border" or "border-color".

```
.border, #border, table{ border:4px solid rgb(179, 139, 109) }
```

If only the border color should be changed use the property `border-color`.

```
.border{ border-color:rgb(179, 139, 109) }
```

If you want to add a box shadow in that color use:

Here you see how a box with a 4 pixel `rgb(179, 139, 109)` colored shadow looks like.

```
.boxshadow{ -moz-box-shadow:4px 4px 4px 4px rgb(179, 139, 109); -webkit-box-shadow:4px 4px 4px 4px rgb(179, 139, 109); box-shadow:4px 4px 4px 4px rgb(179, 139, 109) }
```

Background

The CSS property to change the background color of an element to Android 4289956717 is called "background". The background property can be set on classes, ids or directly on the HTML element.

```
.background, #background, body{  
background: rgb(179, 139, 109) }
```

If only the background color should be changed can be used:

```
.background{ background-color: rgb(179,  
139, 109) }
```

This example shows the color as background, it is applied via the CSS property "background".

To optimize and compress your CSS code, you can use our [online CSS compressor and optimizer](#) based on csstidy. If you want to create a linear or radial gradient as background or border, check our [CSS Gradient Generator](#).

Hey! You found this booklet interesting? Support Converting Colors with the new Membership Option!

The pro membership hides all ads, plus gives you double the colors in the color bucket, and more awesome pro features!

[Learn more, Memberships starting at \\$2.50/m!](#)

**Follow me
on Twitter!**

@ConvertingColor