

Converting Colors

Android(4289958798)

Have a look what the booklet for
Android(4289958798) contains.

Android(4289958798)	3
<i>Conversions</i>	4
<i>Details</i>	6
<i>Harmonies</i>	11
<i>Previews</i>	23
<i>Color Blindness Simulation</i>	26
<i>CSS Examples</i>	29

Color

Android(4289958798)

Conversions

Conversions Part 1

Format	Color
Hex	B3938E
RGB	179, 147, 142
RGB Percent	70%, 58%, 56%
CMY	0.2980, 0.4235, 0.4431
CMYK	0.00, 0.18, 0.21, 0.30
HSL	8°, 20%, 63%
HSV	8°, 21%, 70%
XYZ	33.9066, 32.4041, 30.0587
YIQ	155.9980, 20.6770, 5.2290

Conversions

Conversions Part 2

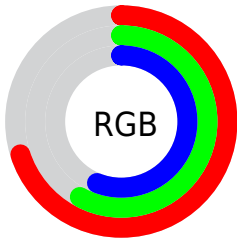
Format	Color
R _Y B	179, 148, 142
Decimal	11768718
CIE Lab	63.68, 11.18, 7.14
CIE LCh	64, 13.270, 32.577
Yxy	32.4041, 0.3518, 0.3362
Android (android.graphics.Color)	4289958798 (0xFFB3938E)
YUV	155.9980, -6.9010, 20.1728
Hunter-Lab	56.9246, 6.7037, 8.5395

Details

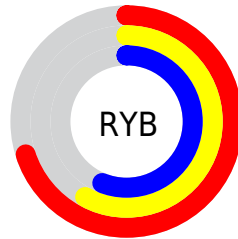
The Android color `4289958798` is a light color, and the websafe version is hex `CC9999`. A complement of this color would be `4287540915`, and the grayscale version is `4288453788`.

A 20% lighter version of the original color is `4293642692`, and `4286472284` is the 20% darker color. If you saturate the color by 10%, you get `4289954940`, and if you desaturate by 10%, it is `4289962656`.

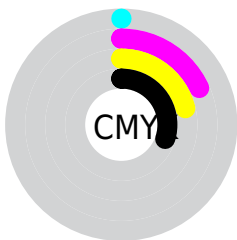
Distribution



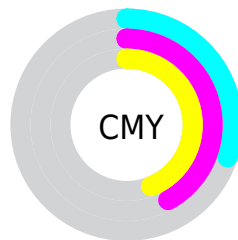
- Red (70%)
- Green (58%)
- Blue (56%)



- Red (70%)
- Yellow (58%)
- Blue (56%)



- Cyan (0%)
- Magenta (18%)
- Yellow (21%)
- Black (30%)



- Cyan (30%)
- Magenta (42%)
- Yellow (44%)

Brightness & Saturation Gradients

These gradients show how the Android color 4289958798 changes by changing the brightness by 10 percent. The first figure shows a shift by +10% for each color and the second figure -10%.

Similar to the brightness gradients but the following saturation gradients show a change of the Android color 4289958798 by changing the saturation by 10% instead.



4289958798



4289958798

4294967295



4288182644



4293642692



4286472284



4294960608



4284762436

4294967292



4283183662



4281605401



4280353792



4278190080



4289958798



4289958798



4289954940



4289962656

 4289950826

 4289966770

 4289946968

 4289970628

 4289942854

 4289974742

 4289938997

 4289978600

 4289934883

 4289982713

 4289931025

 4289986559

 4289927168

Harmonies

Analogous

The Analogous color harmony consists of three colors that are next to each other on the color wheel.



4289893018



4289958798



4289566342

Triad

The Triadic color harmony groups three colors that are evenly spaced from another and form a triangle on the color wheel.



4289958798



4287144079



4287601586

Complementary

The Complementary color scheme is a pair of colors which are on the opposite of each other on the color wheel.



4289958798



4287540915

Split Complementary

Split-complementary colors differ from the complementary color scheme. The scheme consists of three colors, the original color and two neighbors of the complement color.



4286750383



4289958798



4286554523

Square

The Square scheme is like the rectangle color scheme, but the four colors are evenly spaced on the color wheel.



4289958798



4287995270



4286357926



4288583598

Rectangle

The Rectangle color scheme consists of four colors that form a rectangle on the color wheel.



4289958798



4289173635



4286357926



4287274161

Sweetspot

The Sweet Spot groups the original color and five complimentary colors.



4289958798



4293450970



4289957550



4285886061



4294309365



4285887861

Same Dimension

The Same Dimension uses a secret algorithm to generate beautiful new colors.



4289958798



4293441198



4289963406



4284043856



4288222464



4279894784

Inverse Universe

The Inverse Universe completely reimagines the original color for something new.



4287540915



4289650920



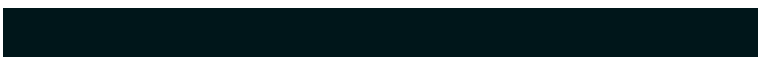
4287536307



4283455577



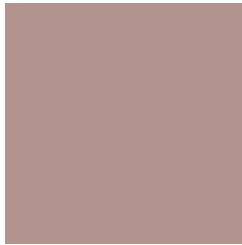
4278224025



4278195738

Previews

White Background



This preview shows how the Android color 4289958798 looks on a white background.

Color Contrast Check

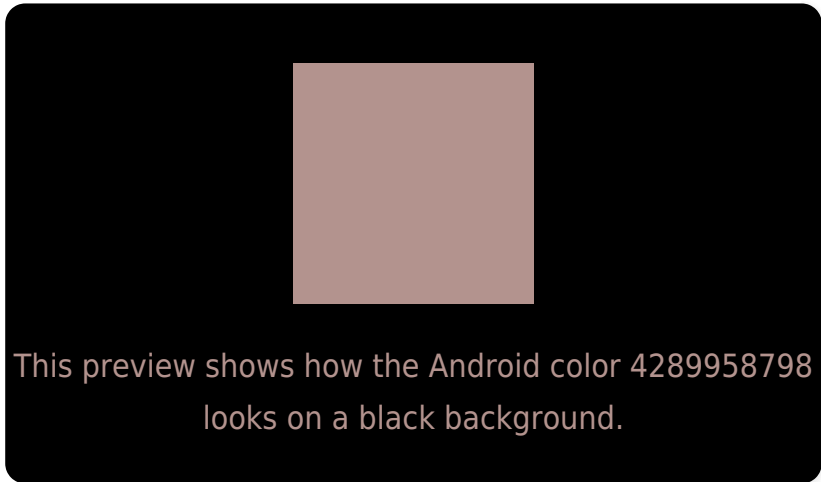
Large Text (above 18pt) WCAG AA × Fail

Any Text WCAG AA × Fail

Large Text (above 18pt) WCAG AAA × Fail

Any Text WCAG AAA × Fail

Black Background



Color Contrast Check

Large Text (above 18pt) WCAG AA ✓ Pass

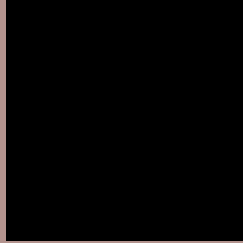
Any Text WCAG AA ✓ Pass

Large Text (above 18pt) WCAG AAA ✓ Pass

Any Text WCAG AAA ✓ Pass

If you want to check with other color combinations, try the [Color Contrast Checker](#).

Android 4289958798 Background



This preview shows how black text looks on a background with the Android color 4289958798.



This preview shows how white text looks on a background with the Android color 4289958798.

Color Blindness Simulation

Color vision deficiency is a very complex topic, and I could not describe the different causes any better than Wikipedia does, so if you want to learn more, you should check out their [article about color blindness](#).

Dichromacy



Original Color
4289958798

Protanopia
4288649874

Deuteranopia
4289631630



Tritanopia
4290089372

Trichromacy



Original Color
4289958798

Protanomaly
4289107857

Deuteranomaly
4289762446

Tritanomaly
4290024087

Monochromacy



Original Color
4289958798

Achromatopsia
4288453788

Achromatomaly
4288977303

CSS Examples

Text

The CSS property to change the color of the text to Android 4289958798 is called "color". The color property can be set on classes, ids or directly on the HTML element.

This example shows how text in the color `rgb(179, 147, 142)` looks like.

```
.text, #text, p{  
    color:rgb(179, 147, 142)  
}
```

If you want to add a text shadow in that color use the text-shadow property, you can generate a text shadow directly with our [CSS Text Shadow Generator](#).

Here you see how black text with a 4 pixel rgb(179, 147, 142) colored shadow looks like.

```
.shadow{ text-shadow: 4px 4px 2px rgb(179, 147, 142) }
```

Border

The CSS property to change the border of an element to Android 4289958798 is called "border". The border property can be set on classes, ids or directly on the HTML element.

This example shows the color as border, it can be applied via the CSS property "border" or "border-color".

```
.border, #border, table{ border:4px solid rgb(179, 147, 142) }
```

If only the border color should be changed use the property `border-color`.

```
.border{ border-color:rgb(179, 147, 142) }
```

If you want to add a box shadow in that color use:

Here you see how a box with a 4 pixel `rgb(179, 147, 142)` colored shadow looks like.

```
.boxshadow{ -moz-box-shadow:4px 4px 4px  
4px rgb(179, 147, 142); -webkit-box-  
shadow:4px 4px 4px 4px rgb(179, 147, 142);  
box-shadow:4px 4px 4px 4px rgb(179, 147,  
142) }
```

Background

The CSS property to change the background color of an element to Android 4289958798 is called "background". The background property can be set on classes, ids or directly on the HTML element.

```
.background, #background, body{  
background: rgb(179, 147, 142) }
```

If only the background color should be changed can be used:

```
.background{ background-color: rgb(179,  
147, 142) }
```

This example shows the color as background, it is applied via the CSS property "background".

To optimize and compress your CSS code, you can use our [online CSS compressor and optimizer](#) based on csstidy. If you want to create a linear or radial gradient as background or border, check our [CSS Gradient Generator](#).

Hey! You found this booklet interesting? Support Converting Colors with the new Membership Option!

The pro membership hides all ads, plus gives you double the colors in the color bucket, and more awesome pro features!

[Learn more, Memberships starting at \\$2.50/m!](#)

**Follow me
on Twitter!**

@ConvertingColor