

Converting Colors

Android(4289959551)

Have a look what the booklet for
Android(4289959551) contains.

Android(4289959551)	3
<i>Conversions</i>	4
<i>Details</i>	6
<i>Harmonies</i>	11
<i>Previews</i>	23
<i>Color Blindness Simulation</i>	26
<i>CSS Examples</i>	29

Color

Android(4289959551)

Conversions

Conversions Part 1

Format	Color
Hex	B3967F
RGB	179, 150, 127
RGB Percent	70%, 59%, 50%
CMY	0.2980, 0.4118, 0.5020
CMYK	0.00, 0.16, 0.29, 0.30
HSL	27°, 25%, 60%
HSV	27°, 29%, 70%
XYZ	33.3275, 32.9287, 24.6780
YIQ	156.0490, 24.6670, -1.0050

Conversions

Conversions Part 2

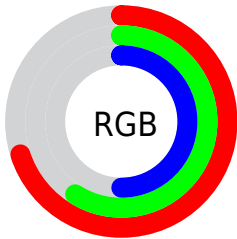
Format	Color
RYB	179, 168, 127
Decimal	11769471
CIELab	64.10, 7.31, 16.17
CIELCh	64, 17.744, 65.677
Yxy	32.9287, 0.3665, 0.3621
Android (android.graphics.Color)	4289959551 (0xFFB3967F)
YUV	156.0490, -14.3212, 20.1280
Hunter-Lab	57.3835, 3.2490, 14.6706

Details

The Android color `4289959551` is a light color, and the websafe version is hex `CC9999`. A complement of this color would be `4286553267`, and the grayscale version is `4288453788`.

A 20% lighter version of the original color is `4293643444`, and `4286407502` is the 20% darker color. If you saturate the color by 10%, you get `4289956973`, and if you desaturate by 10%, it is `4289962129`.

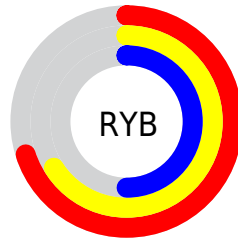
Distribution



Red (70%)

Green (59%)

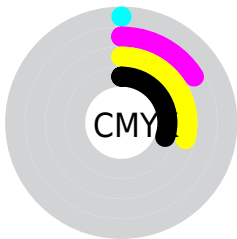
Blue (50%)



Red (70%)

Yellow (66%)

Blue (50%)

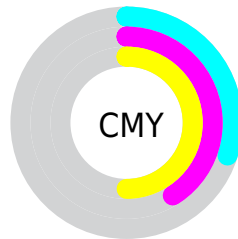


Cyan (0%)

Magenta (16%)

Yellow (29%)

Black (30%)



Cyan (30%)

Magenta (41%)

Yellow (50%)

Brightness & Saturation Gradients

These gradients show how the Android color 4289959551 changes by changing the brightness by 10 percent. The first figure shows a shift by +10% for each color and the second figure -10%.

Similar to the brightness gradients but the following saturation gradients show a change of the Android color 4289959551 by changing the saturation by 10% instead.



4289959551



4289959551

4294967295



4288183398



4293643444



4286407502



4294961359



4284762935



4294967276



4283118881



4281605900



4280158464



4278190080



4289959551



4289959551



4289956973



4289962129

 4289954395

 4289964707

 4289951817

 4289967285

 4289949239

 4289969863

 4289946662

 4289972441

 4289944084

 4289975018

 4289941506

 4289977596

 4289941248

 4289980159

 4289982719

Harmonies

Analogous

The Analogous color harmony consists of three colors that are next to each other on the color wheel.



4290482826



4289959551



4289043324

Triad

The Triadic color harmony groups three colors that are evenly spaced from another and form a triangle on the color wheel.



4289959551



4285834654



4288845493

Complementary

The Complementary color scheme is a pair of colors which are on the opposite of each other on the color wheel.



4289959551



4286553267

Split Complementary

Split-complementary colors differ from the complementary color scheme. The scheme consists of three colors, the original color and two neighbors of the complement color.



4287470779



4289959551



4285637805

Square

The Square scheme is like the rectangle color scheme, but the four colors are evenly spaced on the color wheel.



4289959551



4286686094



4286226872



4289958569

Rectangle

The Rectangle color scheme consists of four colors that form a rectangle on the color wheel.



4289959551



4288257919



4286226872



4288387256

Sweetspot

The Sweet Spot groups the original color and five complimentary colors.



4289959551



4293450963



4289953692



4285886056



4294309365



4285887861

Same Dimension

The Same Dimension uses a secret algorithm to generate beautiful new colors.



4289959551



4293442455



4289966207



4284044368



4288234496



4279896832

Inverse Universe

The Inverse Universe completely reimagines the original color for something new.



4286553267



4288136424



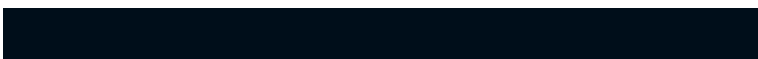
4286546611



4283454809



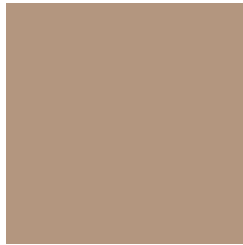
4278211993



4278193690

Previews

White Background



This preview shows how the Android color 4289959551 looks on a white background.

Color Contrast Check

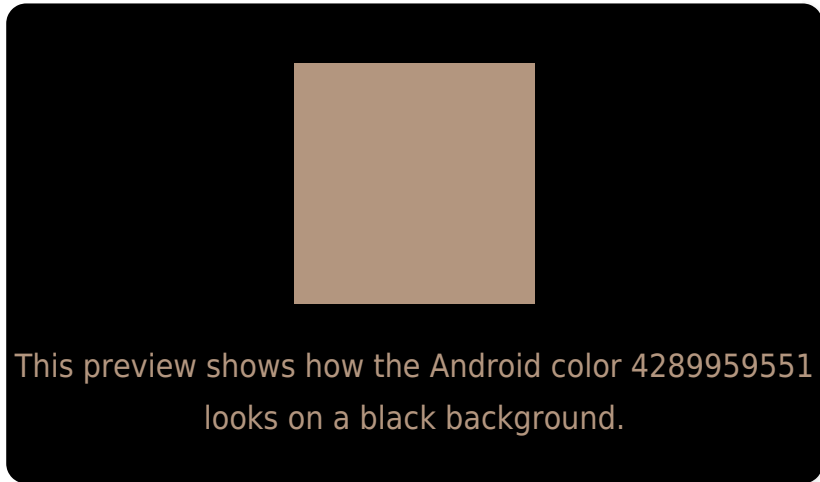
Large Text (above 18pt) WCAG AA × Fail

Any Text WCAG AA × Fail

Large Text (above 18pt) WCAG AAA × Fail

Any Text WCAG AAA × Fail

Black Background



Color Contrast Check

Large Text (above 18pt) WCAG AA ✓ Pass

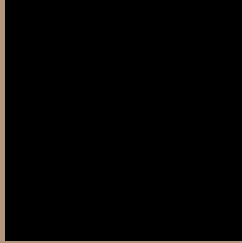
Any Text WCAG AA ✓ Pass

Large Text (above 18pt) WCAG AAA ✓ Pass

Any Text WCAG AAA ✓ Pass

If you want to check with other color combinations, try the [Color Contrast Checker](#).

Android 4289959551 Background



This preview shows how black text looks on a background with the Android color 4289959551.



This preview shows how white text looks on a background with the Android color 4289959551.

Color Blindness Simulation

Color vision deficiency is a very complex topic, and I could not describe the different causes any better than Wikipedia does, so if you want to learn more, you should check out their [article about color blindness](#).


Dichromacy



Original Color
4289959551

Protanopia
4288977793

Deuteranopia
4290024831



Tritanopia
4290155165

Trichromacy



Original Color
4289959551

Protanomaly
4289304960

Deuteranomaly
4290024831

Tritanomaly
4290089874

Monochromacy



Original Color
4289959551

Achromatopsia
4288453788

Achromatomaly
4288977553

CSS Examples

Text

The CSS property to change the color of the text to Android 4289959551 is called "color". The color property can be set on classes, ids or directly on the HTML element.

This example shows how text in the color `rgb(179, 150, 127)` looks like.

```
.text, #text, p{  
    color:rgb(179, 150, 127)  
}
```

If you want to add a text shadow in that color use the text-shadow property, you can generate a text shadow directly with our [CSS Text Shadow Generator](#).

Here you see how black text with a 4 pixel rgb(179, 150, 127) colored shadow looks like.

```
.shadow{ text-shadow: 4px 4px 2px rgb(179, 150, 127) }
```

Border

The CSS property to change the border of an element to Android 4289959551 is called "border". The border property can be set on classes, ids or directly on the HTML element.

This example shows the color as border, it can be applied via the CSS property "border" or "border-color".

```
.border, #border, table{ border:4px solid rgb(179, 150, 127) }
```

If only the border color should be changed use the property `border-color`.

```
.border{ border-color:rgb(179, 150, 127) }
```

If you want to add a box shadow in that color use:

Here you see how a box with a 4 pixel `rgb(179, 150, 127)` colored shadow looks like.

```
.boxshadow{ -moz-box-shadow:4px 4px 4px  
4px rgb(179, 150, 127); -webkit-box-  
shadow:4px 4px 4px 4px rgb(179, 150, 127);  
box-shadow:4px 4px 4px 4px rgb(179, 150,  
127) }
```

Background

The CSS property to change the background color of an element to Android 4289959551 is called "background". The background property can be set on classes, ids or directly on the HTML element.

```
.background, #background, body{  
background: rgb(179, 150, 127) }
```

If only the background color should be changed can be used:

```
.background{ background-color: rgb(179,  
150, 127) }
```

This example shows the color as background, it is applied via the CSS property "background".

To optimize and compress your CSS code, you can use our [online CSS compressor and optimizer](#) based on csstidy. If you want to create a linear or radial gradient as background or border, check our [CSS Gradient Generator](#).

Hey! You found this booklet interesting? Support Converting Colors with the new Membership Option!

The pro membership hides all ads, plus gives you double the colors in the color bucket, and more awesome pro features!

[Learn more, Memberships starting at \\$2.50/m!](#)

**Follow me
on Twitter!**

@ConvertingColor