

Converting Colors

Android(4290009946)

Have a look what the booklet for
Android(4290009946) contains.

Android(4290009946)	3
<i>Conversions</i>	4
<i>Details</i>	6
<i>Harmonies</i>	11
<i>Previews</i>	23
<i>Color Blindness Simulation</i>	26
<i>CSS Examples</i>	29

Color

Android(4290009946)

Conversions

Conversions Part 1

Format	Color
Hex	B45B5A
RGB	180, 91, 90
RGB Percent	71%, 36%, 35%
CMY	0.2941, 0.6431, 0.6471
CMYK	0.00, 0.49, 0.50, 0.29
HSL	1°, 38%, 53%
HSV	1°, 50%, 71%
XYZ	24.4089, 17.9237, 11.8460
YIQ	117.4970, 53.3650, 18.5570

Conversions

Conversions Part 2

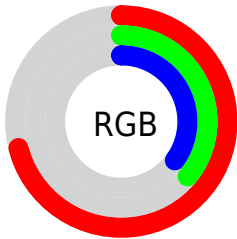
Format	Color
RYB	180, 91, 90
Decimal	11819866
CIELab	49.40, 35.90, 17.29
CIELCh	49, 39.848, 25.710
Yxy	17.9237, 0.4505, 0.3308
Android (android.graphics.Color)	4290009946 (0xFFB45B5A)
YUV	117.4970, -13.5560, 54.8151
Hunter-Lab	42.3363, 28.8253, 13.0457

Details

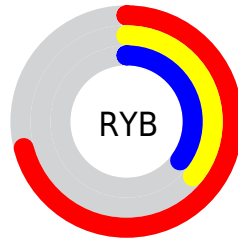
The Android color **4290009946** is a dark color, and the websafe version is hex **CC6666**. A complement of this color would be **4284134324**, and the grayscale version is **4285953654**.

A 20% lighter version of the original color is **4293889932**, and **4286261548** is the 20% darker color. If you saturate the color by 10%, you get **4290005320**, and if you desaturate by 10%, it is **4290014572**.

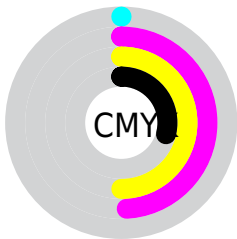
Distribution



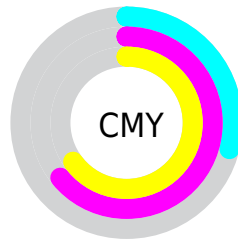
- Red (71%)
- Green (36%)
- Blue (35%)



- Red (71%)
- Yellow (36%)
- Blue (35%)



- Cyan (0%)
- Magenta (49%)
- Yellow (50%)
- Black (29%)



- Cyan (29%)
- Magenta (64%)
- Yellow (65%)

Brightness & Saturation Gradients

These gradients show how the Android color 4290009946 changes by changing the brightness by 10 percent. The first figure shows a shift by +10% for each color and the second figure -10%.

Similar to the brightness gradients but the following saturation gradients show a change of the Android color 4290009946 by changing the saturation by 10% instead.

 4290009946

 4290009946

4294967295

 4288102979

 4293889932

 4286261548


 4294945446

 4284419608

 4294952642

 4282712064

 4294959837

 4281139201

 4294967290

 4278190080

 4290009946

 4290009946

 4290005320

 4290014572

 4290000694

 4290019198

 4289996324

 4290023568

 4289991698

 4290028194

 4289987072

 4290032820

 4290037446

 4290042072

 4290046442

 4290051068

Harmonies

Analogous

The Analogous color harmony consists of three colors that are next to each other on the color wheel.



4289812860



4290009946



4289160510

Triad

The Triadic color harmony groups three colors that are evenly spaced from another and form a triangle on the color wheel.



4290009946



4282549070



4280646585

Complementary

The Complementary color scheme is a pair of colors which are on the opposite of each other on the color wheel.



4290009946



4284134324

Split Complementary

Split-complementary colors differ from the complementary color scheme. The scheme consists of three colors, the original color and two neighbors of the complement color.



4278223533



4290009946



4278224495

Square

The Square scheme is like the rectangle color scheme, but the four colors are evenly spaced on the color wheel.



4290009946



4285299766



4278224530



4285558706

Rectangle

The Rectangle color scheme consists of four colors that form a rectangle on the color wheel.



4290009946



4288114227



4278224530



4278222519

Sweetspot

The Sweet Spot groups the original color and five complimentary colors.



4290009946



4293642439



4290009780



4285882464



4294309365



4285887861

Same Dimension

The Same Dimension uses a secret algorithm to generate beautiful new colors.



4290009946



4293615454



4290021210



4284043344



4288217600



4279894016

Inverse Universe

The Inverse Universe completely reimagines the original color for something new.



4284134324



4284410347



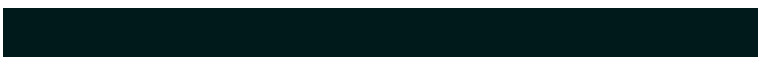
4284123060



4283455833



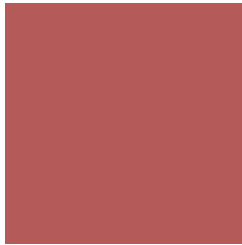
4278228889



4278196506

Previews

White Background



This preview shows how the Android color 4290009946 looks on a white background.

Color Contrast Check

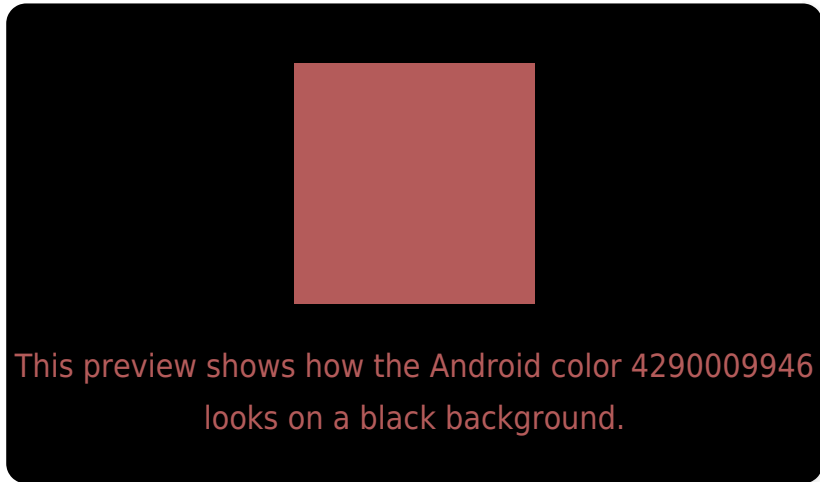
Large Text (above 18pt) WCAG AA ✓ Pass

Any Text WCAG AA ✓ Pass

Large Text (above 18pt) WCAG AAA ✓ Pass

Any Text WCAG AAA × Fail

Black Background



Color Contrast Check

Large Text (above 18pt) WCAG AA ✓ Pass

Any Text WCAG AA ✓ Pass

Large Text (above 18pt) WCAG AAA ✓ Pass

Any Text WCAG AAA × Fail

If you want to check with other color combinations, try the [Color Contrast Checker](#).

Android 4290009946 Background



This preview shows how black text looks on a background with the Android color 4290009946.

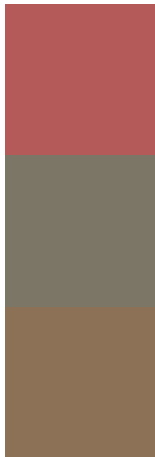


This preview shows how white text looks on a background with the Android color 4290009946.

Color Blindness Simulation

Color vision deficiency is a very complex topic, and I could not describe the different causes any better than Wikipedia does, so if you want to learn more, you should check out their [article about color blindness](#).

Dichromacy



Original Color
4290009946

Protanopia
4286346855

Deuteranopia
4287394134

Trichromacy



Original Color
4290009946

Protanomaly
4287655010

Deuteranomaly
4288375127

Tritanomaly
4290009694

Monochromacy



Original Color
4290009946

Achromatopsia
4285887861

Achromatomaly
4287392875

CSS Examples

Text

The CSS property to change the color of the text to Android 4290009946 is called "color". The color property can be set on classes, ids or directly on the HTML element.

This example shows how text in the color `rgb(180, 91, 90)` looks like.

```
.text, #text, p{  
    color:rgb(180, 91, 90)  
}
```

If you want to add a text shadow in that color use the text-shadow property, you can generate a text shadow directly with our [CSS Text Shadow Generator](#).

Here you see how black text with a 4 pixel rgb(180, 91, 90) colored shadow looks like.

```
.shadow{ text-shadow: 4px 4px 2px rgb(180, 91, 90) }
```

Border

The CSS property to change the border of an element to Android 4290009946 is called "border". The border property can be set on classes, ids or directly on the HTML element.

This example shows the color as border, it can be applied via the CSS property "border" or "border-color".

```
.border, #border, table{ border:4px solid rgb(180, 91, 90) }
```

If only the border color should be changed use the property `border-color`.

```
.border{ border-color:rgb(180, 91, 90) }
```

If you want to add a box shadow in that color use:

Here you see how a box with a 4 pixel `rgb(180, 91, 90)` colored shadow looks like.

```
.boxshadow{ -moz-box-shadow:4px 4px 4px  
4px rgb(180, 91, 90); -webkit-box-  
shadow:4px 4px 4px 4px rgb(180, 91, 90);  
box-shadow:4px 4px 4px 4px rgb(180, 91,  
90) }
```

Background

The CSS property to change the background color of an element to Android 4290009946 is called "background". The background property can be set on classes, ids or directly on the HTML element.

```
.background, #background, body{  
background: rgb(180, 91, 90) }
```

If only the background color should be changed can be used:

```
.background{ background-color: rgb(180, 91,  
90) }
```

This example shows the color as background, it is applied via the CSS property "background".

To optimize and compress your CSS code, you can use our [online CSS compressor and optimizer](#) based on csstidy. If you want to create a linear or radial gradient as background or border, check our [CSS Gradient Generator](#).

Hey! You found this booklet interesting? Support Converting Colors with the new Membership Option!

The pro membership hides all ads, plus gives you double the colors in the color bucket, and more awesome pro features!

[Learn more, Memberships starting at \\$2.50/m!](#)

**Follow me
on Twitter!**

@ConvertingColor