

Converting Colors

Android(4290017611)

Have a look what the booklet for
Android(4290017611) contains.

Android(4290017611)	3
<i>Conversions</i>	4
<i>Details</i>	6
<i>Harmonies</i>	11
<i>Previews</i>	23
<i>Color Blindness Simulation</i>	26
<i>CSS Examples</i>	29

Color

Android(4290017611)

Conversions

Conversions Part 1

Format	Color
Hex	B4794B
RGB	180, 121, 75
RGB Percent	71%, 47%, 29%
CMY	0.2941, 0.5255, 0.7059
CMYK	0.00, 0.33, 0.58, 0.29
HSL	26°, 41%, 50%
HSV	26°, 58%, 71%
XYZ	26.9298, 23.8860, 9.8477
YIQ	133.3970, 49.9300, -1.7980

Conversions

Conversions Part 2

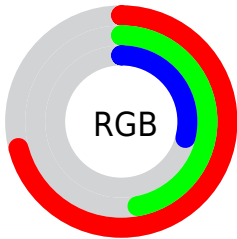
Format	Color
R_{YB}	180, 157, 75
Decimal	11827531
CIE Lab	55.97, 18.17, 34.32
CIE LCh	56, 38.830, 62.103
Yxy	23.8860, 0.4439, 0.3937
Android (android.graphics.Color)	4290017611 (0xFFB4794B)
YUV	133.3970, -28.7897, 40.8708
Hunter-Lab	48.8733, 12.8271, 22.2647

Details

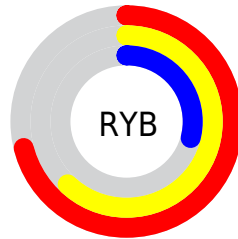
The Android color `4290017611` is a dark color, and the websafe version is hex `996633`. A complement of this color would be `4283139764`, and the grayscale version is `4287006342`.

A 20% lighter version of the original color is `4293897853`, and `4286335005` is the 20% darker color. If you saturate the color by 10%, you get `4290015033`, and if you desaturate by 10%, it is `4290020189`.

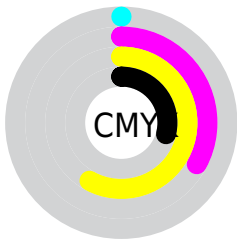
Distribution



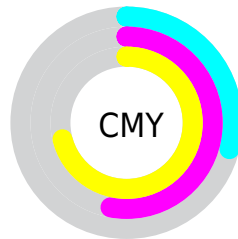
- Red (71%)
- Green (47%)
- Blue (29%)



- Red (71%)
- Yellow (62%)
- Blue (29%)



- Cyan (0%)
- Magenta (33%)
- Yellow (58%)
- Black (29%)



- Cyan (29%)
- Magenta (53%)
- Yellow (71%)

Brightness & Saturation Gradients

These gradients show how the Android color 4290017611 changes by changing the brightness by 10 percent. The first figure shows a shift by +10% for each color and the second figure -10%.

Similar to the brightness gradients but the following saturation gradients show a change of the Android color 4290017611 by changing the saturation by 10% instead.

 4290017611

 4290017611

4294967295

 4288176179

 4293897853

 4286335005

 4294953367

 4284494085

 4294960562

 4282784768

 4294967246

 4281075200

 4294967274

 4278321152

 4278190080

 4290017611

 4290017611

 4290015033

 4290020189

■ 4290012455

■ 4290022767

■ 4290009877

■ 4290025345

■ 4290007299

■ 4290027923

■ 4290006784

■ 4290030757

■ 4290033335

■ 4290035913

■ 4290038491

■ 4290041069

Harmonies

Analogous

The Analogous color harmony consists of three colors that are next to each other on the color wheel.



4291063396



4290017611



4288251201

Triad

The Triadic color harmony groups three colors that are evenly spaced from another and form a triangle on the color wheel.



4290017611



4278229127



4287397055

Complementary

The Complementary color scheme is a pair of colors which are on the opposite of each other on the color wheel.



4290017611



4283139764

Split Complementary

Split-complementary colors differ from the complementary color scheme. The scheme consists of three colors, the original color and two neighbors of the complement color.



4283599305



4290017611



4278228905

Square

The Square scheme is like the rectangle color scheme, but the four colors are evenly spaced on the color wheel.



4290017611



4283143525



4278227649



4289884326

Rectangle

The Rectangle color scheme consists of four colors that form a rectangle on the color wheel.



4290017611



4286745670



4278227649



4286284229

Sweetspot

The Sweet Spot groups the original color and five complimentary colors.



4290017611



4293645248



4290005894



4285884251



4294309365



4285887861

Same Dimension

The Same Dimension uses a secret algorithm to generate beautiful new colors.



4290017611



4293627462



4290030923



4284044368



4288234240



4279896832

Inverse Universe

The Inverse Universe completely reimagines the original color for something new.



4283139764



4282819563



4283126452



4283454809



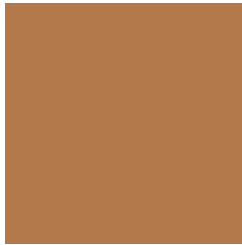
4278212249



4278193690

Previews

White Background



This preview shows how the Android color 4290017611 looks on a white background.

Color Contrast Check

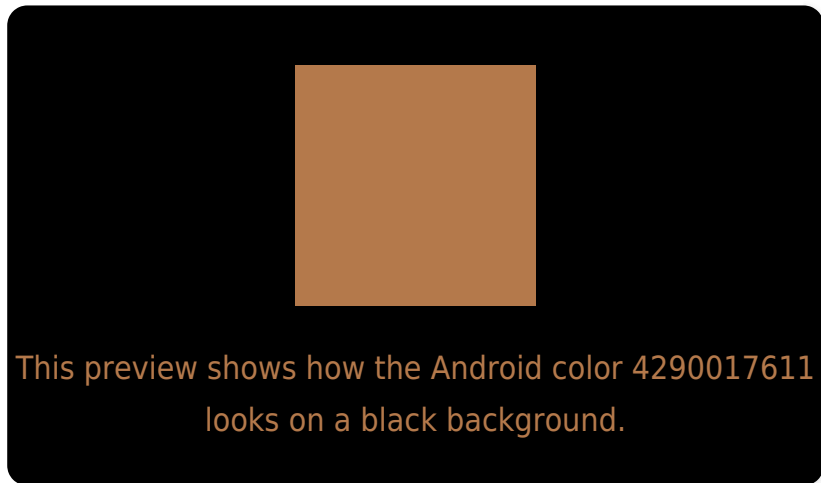
Large Text (above 18pt) WCAG AA ✓ Pass

Any Text WCAG AA ✗ Fail

Large Text (above 18pt) WCAG AAA ✗ Fail

Any Text WCAG AAA ✗ Fail

Black Background



Color Contrast Check

Large Text (above 18pt) WCAG AA ✓ Pass

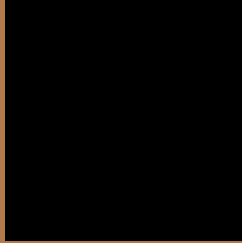
Any Text WCAG AA ✓ Pass

Large Text (above 18pt) WCAG AAA ✓ Pass

Any Text WCAG AAA × Fail

If you want to check with other color combinations, try the [Color Contrast Checker](#).

Android 4290017611 Background



This preview shows how black text looks on a background with the Android color 4290017611.



This preview shows how white text looks on a background with the Android color 4290017611.

Color Blindness Simulation

Color vision deficiency is a very complex topic, and I could not describe the different causes any better than Wikipedia does, so if you want to learn more, you should check out their [article about color blindness](#).

Dichromacy



Original Color
4290017611

Protanopia
4287858512

Deuteranopia
4289036361

Trichromacy



Original Color
4290017611

Protanomaly
4288643662

Deuteranomaly
4289363274

Tritanomaly
4290213226

Monochromacy



Original Color
4290017611

Achromatopsia
4286940549

Achromatomaly
4288053616

CSS Examples

Text

The CSS property to change the color of the text to Android 4290017611 is called "color". The color property can be set on classes, ids or directly on the HTML element.

This example shows how text in the color `rgb(180, 121, 75)` looks like.

```
.text, #text, p{  
    color:rgb(180, 121, 75)  
}
```

If you want to add a text shadow in that color use the text-shadow property, you can generate a text shadow directly with our [CSS Text Shadow Generator](#).

Here you see how black text with a 4 pixel rgb(180, 121, 75) colored shadow looks like.

```
.shadow{ text-shadow: 4px 4px 2px rgb(180, 121, 75) }
```

Border

The CSS property to change the border of an element to Android 4290017611 is called "border". The border property can be set on classes, ids or directly on the HTML element.

This example shows the color as border, it can be applied via the CSS property "border" or "border-color".

```
.border, #border, table{ border:4px solid rgb(180, 121, 75) }
```

If only the border color should be changed use the property border-color.

```
.border{ border-color:rgb(180, 121, 75) }
```

If you want to add a box shadow in that color use:

Here you see how a box with a 4 pixel rgb(180, 121, 75) colored shadow looks like.

```
.boxshadow{ -moz-box-shadow:4px 4px 4px  
4px rgb(180, 121, 75); -webkit-box-  
shadow:4px 4px 4px 4px rgb(180, 121, 75);  
box-shadow:4px 4px 4px 4px rgb(180, 121,  
75) }
```

Background

The CSS property to change the background color of an element to Android 4290017611 is called "background". The background property can be set on classes, ids or directly on the HTML element.

```
.background, #background, body{  
background: rgb(180, 121, 75) }
```

If only the background color should be changed can be used:

```
.background{ background-color: rgb(180,  
121, 75) }
```

This example shows the color as background, it is applied via the CSS property "background".

To optimize and compress your CSS code, you can use our [online CSS compressor and optimizer](#) based on csstidy. If you want to create a linear or radial gradient as background or border, check our [CSS Gradient Generator](#).

Hey! You found this booklet interesting? Support Converting Colors with the new Membership Option!

The pro membership hides all ads, plus gives you double the colors in the color bucket, and more awesome pro features!

[Learn more, Memberships starting at \\$2.50/m!](#)

**Follow me
on Twitter!**

@ConvertingColor