

# Converting Colors

Android(4290022278)

Have a look what the booklet for  
Android(4290022278) contains.

|  |    |
|--|----|
| <b>Android(4290022278)</b> .....               | 3  |
| <b><i>Conversions</i></b> .....                | 4  |
| <b><i>Details</i></b> .....                    | 6  |
| <b><i>Harmonies</i></b> .....                  | 11 |
| <b><i>Previews</i></b> .....                   | 23 |
| <b><i>Color Blindness Simulation</i></b> ..... | 26 |
| <b><i>CSS Examples</i></b> .....               | 29 |

# **Color**

**Android(4290022278)**

# Conversions

## Conversions Part 1

| Format      | Color                     |
|-------------|---------------------------|
| Hex         | B48B86                    |
| RGB         | 180, 139, 134             |
| RGB Percent | 71%, 55%, 53%             |
| CMY         | 0.2941, 0.4549, 0.4745    |
| CMYK        | 0.00, 0.23, 0.26, 0.29    |
| HSL         | 7°, 23%, 62%              |
| HSV         | 7°, 26%, 71%              |
| XYZ         | 32.3581, 29.8898, 26.6181 |
| YIQ         | 150.6890, 26.0410, 7.1370 |

# Conversions

## Conversions Part 2

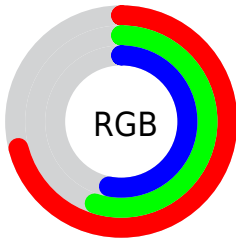
| <b>Format</b>                       | <b>Color</b>   |
|-------------------------------------|--|
| <a href="#">RYB</a>                 | <a href="#">180, 140, 134</a>                                |
| Decimal                             | <a href="#">11832198</a>                                     |
| CIELab                              | <a href="#">61.56, 14.82, 8.67</a>                           |
| CIELCh                              | <a href="#">62, 17.170, 30.316</a>                           |
| Yxy                                 | <a href="#">29.8898, 0.3641, 0.3363</a>                      |
| Android<br>(android.graphics.Color) | <a href="#">4290022278</a><br>( <a href="#">0xFFB48B86</a> ) |
| YUV                                 | <a href="#">150.6890, -8.2277, 25.7057</a>                   |
| Hunter-Lab                          | <a href="#">54.6715, 9.9725, 9.4034</a>                      |

# Details

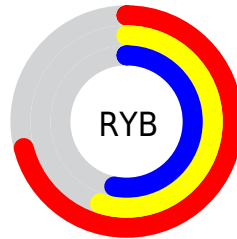
The Android color `4290022278` is a light color, and the websafe version is hex `CC9999`. A complement of this color would be `4287016884`, and the grayscale version is `4288124823`.

A 20% lighter version of the original color is `4293771707`, and `4286470484` is the 20% darker color. If you saturate the color by 10%, you get `4290018164`, and if you desaturate by 10%, it is `4290026392`.

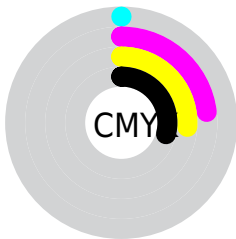
# Distribution



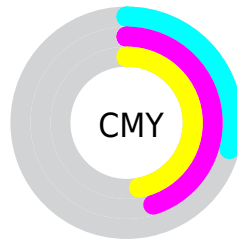
- Red (71%)
- Green (55%)
- Blue (53%)



- Red (71%)
- Yellow (55%)
- Blue (53%)



- Cyan (0%)
- Magenta (23%)
- Yellow (26%)
- Black (29%)



- Cyan (29%)
- Magenta (45%)
- Yellow (47%)

# Brightness & Saturation Gradients

These gradients show how the Android color 4290022278 changes by changing the brightness by 10 percent. The first figure shows a shift by +10% for each color and the second figure -10%.

Similar to the brightness gradients but the following saturation gradients show a change of the Android color 4290022278 by changing the saturation by 10% instead.



 4290022278

 4290022278

4294967295

 4288246125

 4293771707

 4286470484

 4294958551

 4284825917

 4294965747

 4283181864

 4281603603

 4280287232

 4278190080

 4290022278

 4290022278

 4290018164

 4290026392

 4290014050

 4290030506

 4290009936

 4290034620

 4290005822

 4290038734

 4290001708

 4290042848

 4289997594

 4290046962

 4289993480

 4290051071

 4289991680

 4290052095

# Harmonies

## Analogous

The Analogous color harmony consists of three colors that are next to each other on the color wheel.



4289956501



4290022278



4289564539

# Triad

The Triadic color harmony groups three colors that are evenly spaced from another and form a triangle on the color wheel.



4290022278



4286487685



4286813875

# Complementary

The Complementary color scheme is a pair of colors which are on the opposite of each other on the color wheel.



4290022278



4287016884

# Split Complementary

Split-complementary colors differ from the complementary color scheme. The scheme consists of three colors, the original color and two neighbors of the complement color.



4285700783



4290022278



4285635988

# Square

The Square scheme is like the rectangle color scheme, but the four colors are evenly spaced on the color wheel.



4290022278



4287666298



4285242787



4288188847

# Rectangle

The Rectangle color scheme consists of four colors that form a rectangle on the color wheel.



4290022278



4289041015



4285242787



4286421170



# Sweetspot

The Sweet Spot groups the original color and five complimentary colors.



4290022278



4293647064



4290021039



4285885290



4294309365



4285887861



# Same Dimension

The Same Dimension uses a secret algorithm to generate beautiful new colors.



4290022278



4293634722



4290028166



4284043600



4288221440



4279894784



# Inverse Universe

The Inverse Universe completely reimagines the original color for something new.



4287016884



4288865259



4287010996



4283455577



4278225049

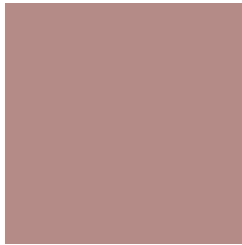


4278195994



# Previews

## White Background



This preview shows how the Android color 4290022278 looks on a white background.

## Color Contrast Check

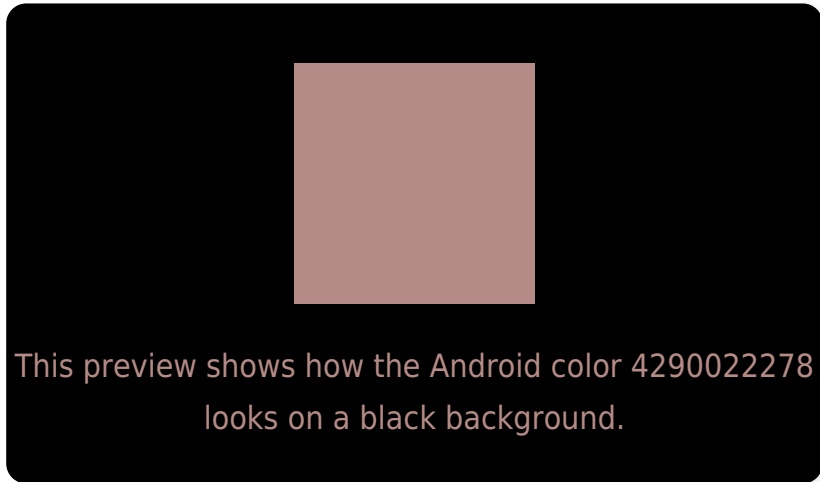
Large Text (above 18pt) WCAG AA ✓ Pass

Any Text WCAG AA ✗ Fail

Large Text (above 18pt) WCAG AAA ✗ Fail

Any Text WCAG AAA ✗ Fail

# Black Background



## Color Contrast Check

Large Text (above 18pt) WCAG AA ✓ Pass

Any Text WCAG AA ✓ Pass

Large Text (above 18pt) WCAG AAA ✓ Pass

Any Text WCAG AAA × Fail

If you want to check with other color combinations, try the [Color Contrast Checker](#).



# Android 4290022278 Background



This preview shows how black text looks on a background with the Android color 4290022278.



This preview shows how white text looks on a background with the Android color 4290022278.

# Color Blindness Simulation

Color vision deficiency is a very complex topic, and I could not describe the different causes any better than Wikipedia does, so if you want to learn more, you should check out their [article about color blindness](#).


## Dichromacy



**Original Color**  
4290022278

**Protanopia**  
4288320651

**Deuteranopia**  
4289302661



**Tritanopia**  
4290152852

# Trichromacy



**Original Color**  
4290022278

**Protanomaly**  
4288909705

**Deuteranomaly**  
4289564293

**Tritanomaly**  
4290087567

# Monochromacy



**Original Color**  
4290022278

**Achromatopsia**  
4288124823

**Achromatomaly**  
4288844689

# CSS Examples

## Text

The CSS property to change the color of the text to Android 4290022278 is called "color". The color property can be set on classes, ids or directly on the HTML element.

This example shows how text in the color `rgb(180, 139, 134)` looks like.

```
.text, #text, p{  
    color:rgb(180, 139, 134)  
}
```

If you want to add a text shadow in that color use the text-shadow property, you can generate a text shadow directly with our [CSS Text Shadow Generator](#).

Here you see how black text with a 4 pixel rgb(180, 139, 134) colored shadow looks like.

```
.shadow{ text-shadow: 4px 4px 2px rgb(180, 139, 134) }
```

## Border

The CSS property to change the border of an element to Android 4290022278 is called "border". The border property can be set on classes, ids or directly on the HTML element.

This example shows the color as border, it can be applied via the CSS property "border" or "border-color".

```
.border, #border, table{ border:4px solid rgb(180, 139, 134) }
```

If only the border color should be changed use the property `border-color`.

```
.border{ border-color:rgb(180, 139, 134) }
```

If you want to add a box shadow in that color use:

Here you see how a box with a 4 pixel `rgb(180, 139, 134)` colored shadow looks like.

```
.boxshadow{ -moz-box-shadow:4px 4px 4px 4px rgb(180, 139, 134); -webkit-box-shadow:4px 4px 4px 4px rgb(180, 139, 134); box-shadow:4px 4px 4px 4px rgb(180, 139, 134) }
```

# Background

The CSS property to change the background color of an element to Android 4290022278 is called "background". The background property can be set on classes, ids or directly on the HTML element.

```
.background, #background, body{  
background: rgb(180, 139, 134) }
```

If only the background color should be changed can be used:

```
.background{ background-color: rgb(180,  
139, 134) }
```

This example shows the color as background, it is applied via the CSS property "background".

To optimize and compress your CSS code, you can use our [online CSS compressor and optimizer](#) based on csstidy. If you want to create a linear or radial gradient as background or border, check our [CSS Gradient Generator](#).



Hey! You found this booklet interesting? Support Converting Colors with the new Membership Option!

The pro membership hides all ads, plus gives you double the colors in the color bucket, and more awesome pro features!

**[Learn more, Memberships starting at \\$2.50/m!](#)**

**Follow me  
on Twitter!**

@ConvertingColor