

Converting Colors

Android(4290022296)

Have a look what the booklet for
Android(4290022296) contains.

Android(4290022296)	3
<i>Conversions</i>	4
<i>Details</i>	6
<i>Harmonies</i>	11
<i>Previews</i>	23
<i>Color Blindness Simulation</i>	26
<i>CSS Examples</i>	29

Color

Android(4290022296)

Conversions

Conversions Part 1

Format	Color
Hex	B48B98
RGB	180, 139, 152
RGB Percent	71%, 55%, 60%
CMY	0.2941, 0.4549, 0.4039
CMYK	0.00, 0.23, 0.16, 0.29
HSL	341°, 21%, 63%
HSV	341°, 23%, 71%
XYZ	33.7225, 30.4355, 33.8030
YIQ	152.7410, 20.2630, 12.7350

Conversions

Conversions Part 2

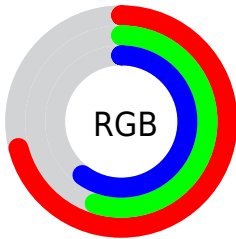
Format	Color
RYB	180, 139, 152
Decimal	11832216
CIELab	62.03, 17.64, -0.89
CIELCh	62, 17.662, 357.104
Yxy	30.4355, 0.3442, 0.3107
Android (android.graphics.Color)	4290022296 (0xFFB48B98)
YUV	152.7410, -0.3653, 23.9061
Hunter-Lab	55.1684, 12.5660, 2.2894

Details

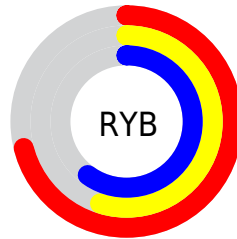
The Android color `4290022296` is a light color, and the websafe version is hex `CC9999`. A complement of this color would be `4287345831`, and the grayscale version is `4288256409`.

A 20% lighter version of the original color is `4293706190`, and `4286536037` is the 20% darker color. If you saturate the color by 10%, you get `4290017676`, and if you desaturate by 10%, it is `4290026916`.

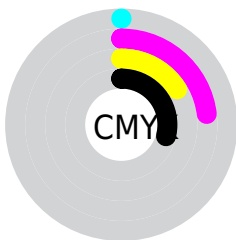
Distribution



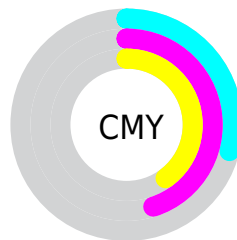
- Red (71%)
- Green (55%)
- Blue (60%)



- Red (71%)
- Yellow (55%)
- Blue (60%)



- Cyan (0%)
- Magenta (23%)
- Yellow (16%)
- Black (29%)



- Cyan (29%)
- Magenta (45%)
- Yellow (40%)

Brightness & Saturation Gradients

These gradients show how the Android color 4290022296 changes by changing the brightness by 10 percent. The first figure shows a shift by +10% for each color and the second figure -10%.

Similar to the brightness gradients but the following saturation gradients show a change of the Android color 4290022296 by changing the saturation by 10% instead.



4290022296



4290022296

4294967295



4288246142



4293706190



4286536037



4294958570



4284825933



4294965759



4283247415



4281668897



4280418314



4278190080



4290022296



4290022296



4290017676



4290026916

 4290013055

 4290031537

 4290008435

 4290036157

 4290003815

 4290040777

 4289999195

 4290045397

 4289994574

 4290050018

 4289989954

 4290052078

 4289986617

 4290052090

 4290052095

Harmonies

Analogous

The Analogous color harmony consists of three colors that are next to each other on the color wheel.



4289302183



4290022296



4290153608

Triad

The Triadic color harmony groups three colors that are evenly spaced from another and form a triangle on the color wheel.



4290022296



4287863162



4285635760

Complementary

The Complementary color scheme is a pair of colors which are on the opposite of each other on the color wheel.



4290022296



4287345831

Split Complementary

Split-complementary colors differ from the complementary color scheme. The scheme consists of three colors, the original color and two neighbors of the complement color.



4285243300



4290022296



4286684548

Square

The Square scheme is like the rectangle color scheme, but the four colors are evenly spaced on the color wheel.



4290022296



4288910455



4285702036



4286748853

Rectangle

The Rectangle color scheme consists of four colors that form a rectangle on the color wheel.



4290022296



4289957504



4285702036



4285439404

Sweetspot

The Sweet Spot groups the original color and five complimentary colors.



4290022296



4293647071



4289104820



4285885551



4294309365



4285887861

Same Dimension

The Same Dimension uses a secret algorithm to generate beautiful new colors.



4290022296



4293635007



4290024075



4284043347



4288217137



4279894024

Inverse Universe

The Inverse Universe completely reimagines the original color for something new.



4290022296



4293635007



4287344052



4284043347



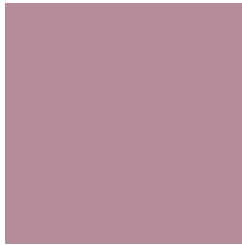
4288217137



4279894024

Previews

White Background



This preview shows how the Android color 4290022296 looks on a white background.

Color Contrast Check

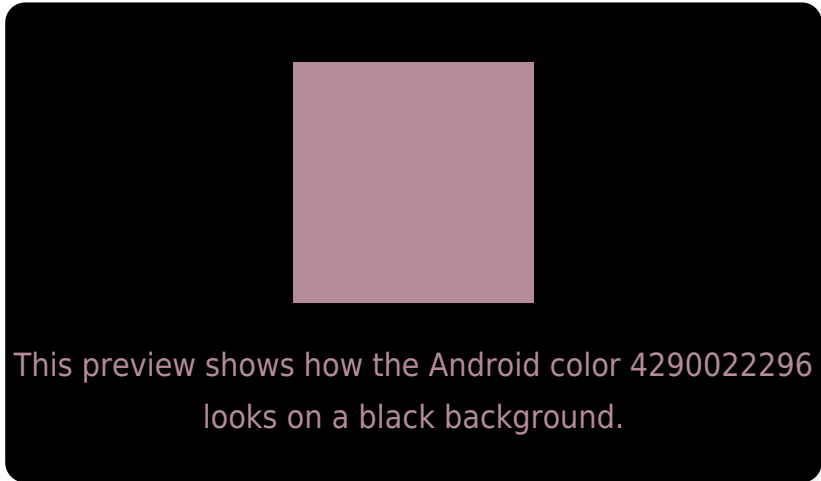
Large Text (above 18pt) WCAG AA × Fail

Any Text WCAG AA × Fail

Large Text (above 18pt) WCAG AAA × Fail

Any Text WCAG AAA × Fail

Black Background



Color Contrast Check

Large Text (above 18pt) WCAG AA ✓ Pass

Any Text WCAG AA ✓ Pass

Large Text (above 18pt) WCAG AAA ✓ Pass

Any Text WCAG AAA ✓ Pass

If you want to check with other color combinations, try the [Color Contrast Checker](#).

Android 4290022296 Background



This preview shows how black text looks on a background with the Android color 4290022296.



This preview shows how white text looks on a background with the Android color 4290022296.

Color Blindness Simulation

Color vision deficiency is a very complex topic, and I could not describe the different causes any better than Wikipedia does, so if you want to learn more, you should check out their [article about color blindness](#).

Dichromacy





Tritanopia
4290022294

Trichromacy



Original Color

4290022296

Protanomaly

4288844188

Deuteranomaly

4289367959

Tritanomaly

4290022295

Monochromacy



Original Color

4290022296

Achromatopsia

4288256409

Achromatomaly

4288910489

CSS Examples

Text

The CSS property to change the color of the text to Android 4290022296 is called "color". The color property can be set on classes, ids or directly on the HTML element.

This example shows how text in the color `rgb(180, 139, 152)` looks like.

```
.text, #text, p{  
    color:rgb(180, 139, 152)  
}
```

If you want to add a text shadow in that color use the text-shadow property, you can generate a text shadow directly with our [CSS Text Shadow Generator](#).

Here you see how black text with a 4 pixel rgb(180, 139, 152) colored shadow looks like.

```
.shadow{ text-shadow: 4px 4px 2px rgb(180, 139, 152) }
```

Border

The CSS property to change the border of an element to Android 4290022296 is called "border". The border property can be set on classes, ids or directly on the HTML element.

This example shows the color as border, it can be applied via the CSS property "border" or "border-color".

```
.border, #border, table{ border:4px solid rgb(180, 139, 152) }
```

If only the border color should be changed use the property `border-color`.

```
.border{ border-color:rgb(180, 139, 152) }
```

If you want to add a box shadow in that color use:

Here you see how a box with a 4 pixel `rgb(180, 139, 152)` colored shadow looks like.

```
.boxshadow{ -moz-box-shadow:4px 4px 4px 4px rgb(180, 139, 152); -webkit-box-shadow:4px 4px 4px 4px rgb(180, 139, 152); box-shadow:4px 4px 4px 4px rgb(180, 139, 152) }
```

Background

The CSS property to change the background color of an element to Android 4290022296 is called "background". The background property can be set on classes, ids or directly on the HTML element.

```
.background, #background, body{  
background: rgb(180, 139, 152) }
```

If only the background color should be changed can be used:

```
.background{ background-color: rgb(180,  
139, 152) }
```

This example shows the color as background, it is applied via the CSS property "background".

To optimize and compress your CSS code, you can use our [online CSS compressor and optimizer](#) based on csstidy. If you want to create a linear or radial gradient as background or border, check our [CSS Gradient Generator](#).

Hey! You found this booklet interesting? Support Converting Colors with the new Membership Option!

The pro membership hides all ads, plus gives you double the colors in the color bucket, and more awesome pro features!

[Learn more, Memberships starting at \\$2.50/m!](#)

**Follow me
on Twitter!**

@ConvertingColor