

Converting Colors

Android(4290022743)

Have a look what the booklet for
Android(4290022743) contains.

Android(4290022743)	3
<i>Conversions</i>	4
<i>Details</i>	6
<i>Harmonies</i>	11
<i>Previews</i>	23
<i>Color Blindness Simulation</i>	26
<i>CSS Examples</i>	29

Color

Android(4290022743)

Conversions

Conversions Part 1

Format	Color
Hex	B48D57
RGB	180, 141, 87
RGB Percent	71%, 55%, 34%
CMY	0.2941, 0.4471, 0.6588
CMYK	0.00, 0.22, 0.52, 0.29
HSL	35°, 38%, 52%
HSV	35°, 52%, 71%
XYZ	30.0676, 29.4412, 13.1148
YIQ	146.5050, 40.5780, -8.5260

Conversions

Conversions Part 2

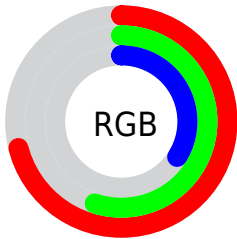
Format	Color
RYB	154, 180, 87
Decimal	11832663
CIELab	61.17, 8.06, 34.28
CIELCh	61, 35.214, 76.764
Yxy	29.4412, 0.4140, 0.4054
Android (android.graphics.Color)	4290022743 (0xFFB48D57)
YUV	146.5050, -29.3360, 29.3751
Hunter-Lab	54.2597, 3.9598, 23.6512

Details

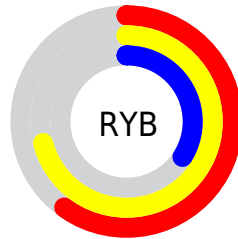
The Android color `4290022743` is a dark color, and the websafe version is hex `CC9966`. A complement of this color would be `4283924148`, and the grayscale version is `4287861651`.

A 20% lighter version of the original color is `4293837706`, and `4286405416` is the 20% darker color. If you saturate the color by 10%, you get `4290020677`, and if you desaturate by 10%, it is `4290024809`.

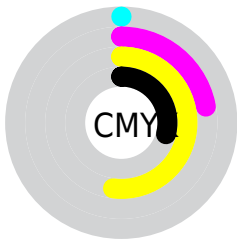
Distribution



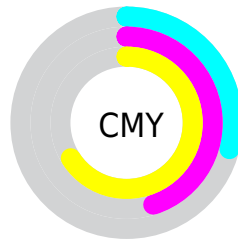
- Red (71%)
- Green (55%)
- Blue (34%)



- Red (60%)
- Yellow (71%)
- Blue (34%)



- Cyan (0%)
- Magenta (22%)
- Yellow (52%)
- Black (29%)



- Cyan (29%)
- Magenta (45%)
- Yellow (66%)

Brightness & Saturation Gradients

These gradients show how the Android color 4290022743 changes by changing the brightness by 10 percent. The first figure shows a shift by +10% for each color and the second figure -10%.

Similar to the brightness gradients but the following saturation gradients show a change of the Android color 4290022743 by changing the saturation by 10% instead.



4290022743



4290022743

4294967295



4288181311



4293837706



4286405416



4294958756



4284630032



4294966208



4282985728



4294967260



4281276672



4294967289



4279697408



4278190080



4290022743



4290022743



4290020677



4290024809

■ 4290018867

■ 4290026619

■ 4290016801

■ 4290028685

■ 4290014991

■ 4290030495

■ 4290013440

■ 4290032561

■ 4290034371

■ 4290036437

■ 4290038247

■ 4290040313

Harmonies

Analogous

The Analogous color harmony consists of three colors that are next to each other on the color wheel.



4291396200



4290022743



4288059223

Triad

The Triadic color harmony groups three colors that are evenly spaced from another and form a triangle on the color wheel.



4290022743



4279411877



4289562047

Complementary

The Complementary color scheme is a pair of colors which are on the opposite of each other on the color wheel.



4290022743



4283924148

Split Complementary

Split-complementary colors differ from the complementary color scheme. The scheme consists of three colors, the original color and two neighbors of the complement color.



4286812623



4290022743



4278231488

Square

The Square scheme is like the rectangle color scheme, but the four colors are evenly spaced on the color wheel.



4290022743



4283081604



4283210704



4291263907

Rectangle

The Rectangle color scheme consists of four colors that form a rectangle on the color wheel.



4290022743



4286618977



4283210704



4288711110

Sweetspot

The Sweet Spot groups the original color and five complimentary colors.



4290022743



4293647301



4290008959



4285885535



4294309365



4285887861

Same Dimension

The Same Dimension uses a secret algorithm to generate beautiful new colors.



4290022743



4293635673



4289639511



4284044880



4288239872



4279897856

Inverse Universe

The Inverse Universe completely reimagines the original color for something new.



4283924148



4284061419



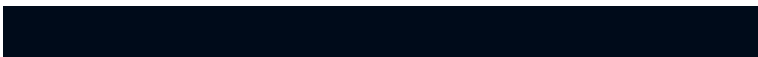
4284307380



4283454553



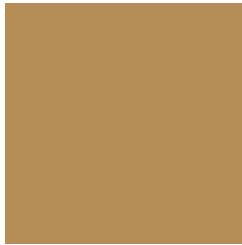
4278206617



4278192922

Previews

White Background



This preview shows how the Android color 4290022743 looks on a white background.

Color Contrast Check

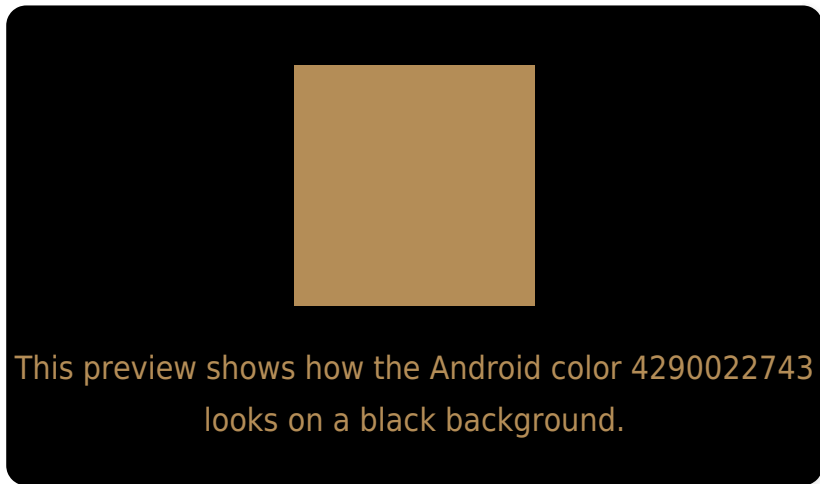
Large Text (above 18pt) WCAG AA ✓ Pass

Any Text WCAG AA ✗ Fail

Large Text (above 18pt) WCAG AAA ✗ Fail

Any Text WCAG AAA ✗ Fail

Black Background



Color Contrast Check

Large Text (above 18pt) WCAG AA ✓ Pass

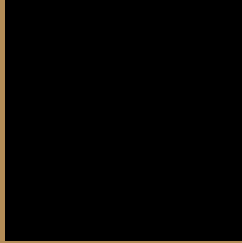
Any Text WCAG AA ✓ Pass

Large Text (above 18pt) WCAG AAA ✓ Pass

Any Text WCAG AAA × Fail

If you want to check with other color combinations, try the [Color Contrast Checker](#).

Android 4290022743 Background



This preview shows how black text looks on a background with the Android color 4290022743.



This preview shows how white text looks on a background with the Android color 4290022743.

Color Blindness Simulation

Color vision deficiency is a very complex topic, and I could not describe the different causes any better than Wikipedia does, so if you want to learn more, you should check out their [article about color blindness](#).


Dichromacy



Original Color
4290022743

Protanopia
4288844890

Deuteranopia
4290022743



Tritanopia
4290348688

Trichromacy



Original Color
4290022743

Protanomaly
4289302873

Deuteranomaly
4290022743

Tritanomaly
4290218363

Monochromacy



Original Color
4290022743

Achromatopsia
4287861651

Achromatomaly
4288647549

CSS Examples

Text

The CSS property to change the color of the text to Android 4290022743 is called "color". The color property can be set on classes, ids or directly on the HTML element.

This example shows how text in the color `rgb(180, 141, 87)` looks like.

```
.text, #text, p{  
    color:rgb(180, 141, 87)  
}
```

If you want to add a text shadow in that color use the text-shadow property, you can generate a text shadow directly with our [CSS Text Shadow Generator](#).

Here you see how black text with a 4 pixel rgb(180, 141, 87) colored shadow looks like.

```
.shadow{ text-shadow: 4px 4px 2px rgb(180, 141, 87) }
```

Border

The CSS property to change the border of an element to Android 4290022743 is called "border". The border property can be set on classes, ids or directly on the HTML element.

This example shows the color as border, it can be applied via the CSS property "border" or "border-color".

```
.border, #border, table{ border:4px solid rgb(180, 141, 87) }
```

If only the border color should be changed use the property `border-color`.

```
.border{ border-color:rgb(180, 141, 87) }
```

If you want to add a box shadow in that color use:

Here you see how a box with a 4 pixel `rgb(180, 141, 87)` colored shadow looks like.

```
.boxshadow{ -moz-box-shadow:4px 4px 4px  
4px rgb(180, 141, 87); -webkit-box-  
shadow:4px 4px 4px 4px rgb(180, 141, 87);  
box-shadow:4px 4px 4px 4px rgb(180, 141,  
87) }
```

Background

The CSS property to change the background color of an element to Android 4290022743 is called "background". The background property can be set on classes, ids or directly on the HTML element.

```
.background, #background, body{  
background: rgb(180, 141, 87) }
```

If only the background color should be changed can be used:

```
.background{ background-color: rgb(180,  
141, 87) }
```

This example shows the color as background, it is applied via the CSS property "background".

To optimize and compress your CSS code, you can use our [online CSS compressor and optimizer](#) based on csstidy. If you want to create a linear or radial gradient as background or border, check our [CSS Gradient Generator](#).

Hey! You found this booklet interesting? Support Converting Colors with the new Membership Option!

The pro membership hides all ads, plus gives you double the colors in the color bucket, and more awesome pro features!

[Learn more, Memberships starting at \\$2.50/m!](#)

**Follow me
on Twitter!**

@ConvertingColor