

Converting Colors

Android(4290022752)

Have a look what the booklet for
Android(4290022752) contains.

Android(4290022752)	3
<i>Conversions</i>	4
<i>Details</i>	6
<i>Harmonies</i>	11
<i>Previews</i>	23
<i>Color Blindness Simulation</i>	26
<i>CSS Examples</i>	29

Color

Android(4290022752)

Conversions

Conversions Part 1

Format	Color
Hex	B48D60
RGB	180, 141, 96
RGB Percent	71%, 55%, 38%
CMY	0.2941, 0.4471, 0.6235
CMYK	0.00, 0.22, 0.47, 0.29
HSL	32°, 36%, 54%
HSV	32°, 47%, 71%
XYZ	30.4586, 29.5976, 15.1739
YIQ	147.5310, 37.6890, -5.7270

Conversions

Conversions Part 2

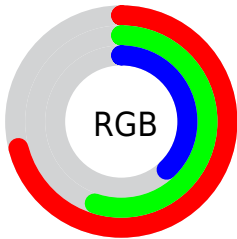
Format	Color
R_{YB}	169, 180, 96
Decimal	11832672
CIE _{Lab}	61.31, 8.95, 29.59
CIE _{LCh}	61, 30.916, 73.182
Yxy	29.5976, 0.4049, 0.3934
Android (android.graphics.Color)	4290022752 (0xFFB48D60)
YUV	147.5310, -25.4048, 28.4753
Hunter-Lab	54.4037, 4.7291, 21.5458

Details

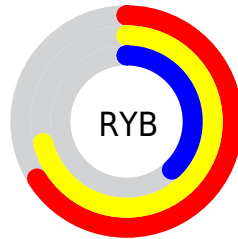
The Android color `4290022752` is a dark color, and the websafe version is hex `CC9966`. A complement of this color would be `4284516276`, and the grayscale version is `4287927444`.

A 20% lighter version of the original color is `4293772179`, and `4286405425` is the 20% darker color. If you saturate the color by 10%, you get `4290020686`, and if you desaturate by 10%, it is `4290024818`.

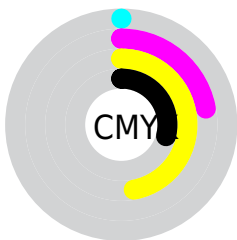
Distribution



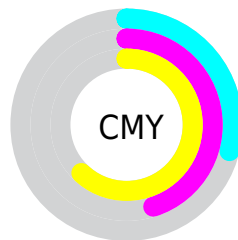
- Red (71%)
- Green (55%)
- Blue (38%)



- Red (66%)
- Yellow (71%)
- Blue (38%)



- Cyan (0%)
- Magenta (22%)
- Yellow (47%)
- Black (29%)



- Cyan (29%)
- Magenta (45%)
- Yellow (62%)

Brightness & Saturation Gradients

These gradients show how the Android color 4290022752 changes by changing the brightness by 10 percent. The first figure shows a shift by +10% for each color and the second figure -10%.

Similar to the brightness gradients but the following saturation gradients show a change of the Android color 4290022752 by changing the saturation by 10% instead.



4290022752



4290022752

4294967295



4288181064



4293772179



4286405425



4294958766



4284695578



4294966217



4282985730



4294967270



4281342208



4279762944



4278190080



4290022752



4290022752



4290020686



4290024818

■ 4290018364

■ 4290027140

■ 4290016298

■ 4290029206

■ 4290014232

■ 4290031272

■ 4290011910

■ 4290033594

■ 4290011136

■ 4290035660

■ 4290037982

■ 4290040048

■ 4290042111

Harmonies

Analogous

The Analogous color harmony consists of three colors that are next to each other on the color wheel.



4291134576



4290022752



4288386654

Triad

The Triadic color harmony groups three colors that are evenly spaced from another and form a triangle on the color wheel.



4290022752



4282098591



4289169852

Complementary

The Complementary color scheme is a pair of colors which are on the opposite of each other on the color wheel.



4290022752



4284516276

Split Complementary

Split-complementary colors differ from the complementary color scheme. The scheme consists of three colors, the original color and two neighbors of the complement color.



4286681801



4290022752



4281639353

Square

The Square scheme is like the rectangle color scheme, but the four colors are evenly spaced on the color wheel.



4290022752



4284195459



4283866056



4290806181

Rectangle

The Rectangle color scheme consists of four colors that form a rectangle on the color wheel.



4290022752



4287077221



4283866056



4288384194

Sweetspot

The Sweet Spot groups the original color and five complimentary colors.



4290022752



4293647306



4290011271



4285885537



4294309365



4285887861

Same Dimension

The Same Dimension uses a secret algorithm to generate beautiful new colors.



4290022752



4293635687



4289836128



4284044624



4288238080



4279897600

Inverse Universe

The Inverse Universe completely reimagines the original color for something new.



4284516276



4284982507



4284702900



4283454553



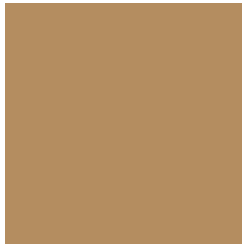
4278208409



4278193178

Previews

White Background



This preview shows how the Android color 4290022752 looks on a white background.

Color Contrast Check

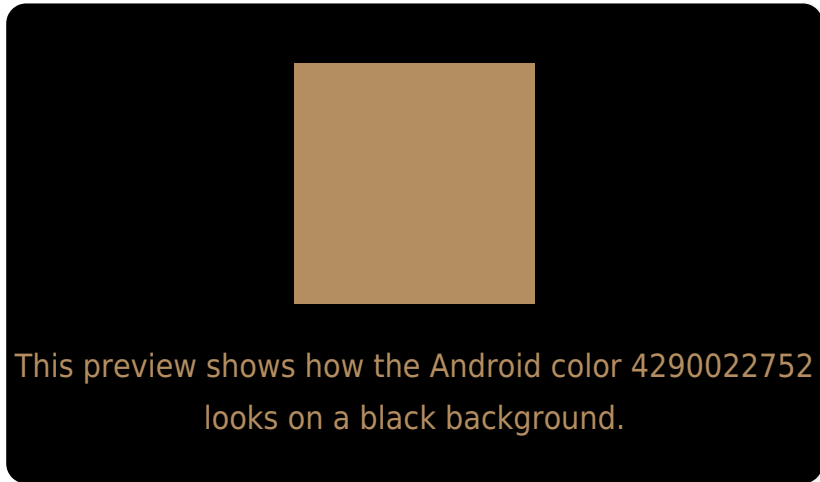
Large Text (above 18pt) WCAG AA ✓ Pass

Any Text WCAG AA ✗ Fail

Large Text (above 18pt) WCAG AAA ✗ Fail

Any Text WCAG AAA ✗ Fail

Black Background



Color Contrast Check

Large Text (above 18pt) WCAG AA ✓ Pass

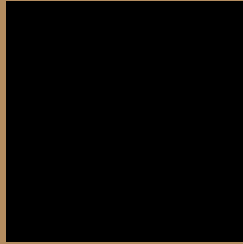
Any Text WCAG AA ✓ Pass

Large Text (above 18pt) WCAG AAA ✓ Pass

Any Text WCAG AAA × Fail

If you want to check with other color combinations, try the [Color Contrast Checker](#).

Android 4290022752 Background



This preview shows how black text looks on a background with the Android color 4290022752.



This preview shows how white text looks on a background with the Android color 4290022752.

Color Blindness Simulation

Color vision deficiency is a very complex topic, and I could not describe the different causes any better than Wikipedia does, so if you want to learn more, you should check out their [article about color blindness](#).


Dichromacy



Original Color
4290022752

Protanopia
4288779363

Deuteranopia
4289891936



Tritanopia
4290348945

Trichromacy



Original Color
4290022752

Protanomaly
4289237346

Deuteranomaly
4289957472

Tritanomaly
4290218367

Monochromacy



Original Color
4290022752

Achromatopsia
4287927444

Achromatomaly
4288713089

CSS Examples

Text

The CSS property to change the color of the text to Android 4290022752 is called "color". The color property can be set on classes, ids or directly on the HTML element.

This example shows how text in the color `rgb(180, 141, 96)` looks like.

```
.text, #text, p{  
    color:rgb(180, 141, 96)  
}
```

If you want to add a text shadow in that color use the text-shadow property, you can generate a text shadow directly with our [CSS Text Shadow Generator](#).

Here you see how black text with a 4 pixel rgb(180, 141, 96) colored shadow looks like.

```
.shadow{ text-shadow: 4px 4px 2px rgb(180, 141, 96) }
```

Border

The CSS property to change the border of an element to Android 4290022752 is called "border". The border property can be set on classes, ids or directly on the HTML element.

This example shows the color as border, it can be applied via the CSS property "border" or "border-color".

```
.border, #border, table{ border:4px solid rgb(180, 141, 96) }
```

If only the border color should be changed use the property `border-color`.

```
.border{ border-color:rgb(180, 141, 96) }
```

If you want to add a box shadow in that color use:

Here you see how a box with a 4 pixel `rgb(180, 141, 96)` colored shadow looks like.

```
.boxshadow{ -moz-box-shadow:4px 4px 4px  
4px rgb(180, 141, 96); -webkit-box-  
shadow:4px 4px 4px 4px rgb(180, 141, 96);  
box-shadow:4px 4px 4px 4px rgb(180, 141,  
96) }
```

Background

The CSS property to change the background color of an element to Android 4290022752 is called "background". The background property can be set on classes, ids or directly on the HTML element.

```
.background, #background, body{  
background: rgb(180, 141, 96) }
```

If only the background color should be changed can be used:

```
.background{ background-color: rgb(180,  
141, 96) }
```

This example shows the color as background, it is applied via the CSS property "background".

To optimize and compress your CSS code, you can use our [online CSS compressor and optimizer](#) based on csstidy. If you want to create a linear or radial gradient as background or border, check our [CSS Gradient Generator](#).

Hey! You found this booklet interesting? Support Converting Colors with the new Membership Option!

The pro membership hides all ads, plus gives you double the colors in the color bucket, and more awesome pro features!

[Learn more, Memberships starting at \\$2.50/m!](#)

**Follow me
on Twitter!**

@ConvertingColor