

Converting Colors

Android(4290022803)

Have a look what the booklet for
Android(4290022803) contains.

Android(4290022803)	3
<i>Conversions</i>	4
<i>Details</i>	6
<i>Harmonies</i>	11
<i>Previews</i>	23
<i>Color Blindness Simulation</i>	26
<i>CSS Examples</i>	29

Color

Android(4290022803)

Conversions

Conversions Part 1

Format	Color
Hex	B48D93
RGB	180, 141, 147
RGB Percent	71%, 55%, 58%
CMY	0.2941, 0.4471, 0.4235
CMYK	0.00, 0.22, 0.18, 0.29
HSL	351°, 21%, 63%
HSV	351°, 22%, 71%
XYZ	33.6137, 30.8596, 31.7886
YIQ	153.3450, 21.3180, 10.1340

Conversions

Conversions Part 2

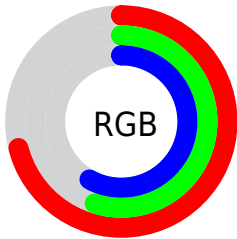
Format	Color
RYB	180, 141, 147
Decimal	11832723
CIELab	62.39, 15.70, 2.47
CIELCh	62, 15.897, 8.956
Yxy	30.8596, 0.3492, 0.3206
Android (android.graphics.Color)	4290022803 (0xFFB48D93)
YUV	153.3450, -3.1281, 23.3764
Hunter-Lab	55.5514, 10.7939, 4.9580

Details

The Android color `4290022803` is a light color, and the websafe version is hex `CC9999`. A complement of this color would be `4287476910`, and the grayscale version is `4288256409`.

A 20% lighter version of the original color is `4293706697`, and `4286536545` is the 20% darker color. If you saturate the color by 10%, you get `4290018180`, and if you desaturate by 10%, it is `4290027426`.

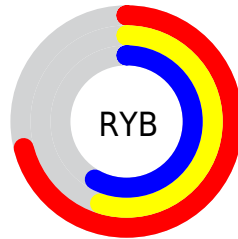
Distribution



Red (71%)

Green (55%)

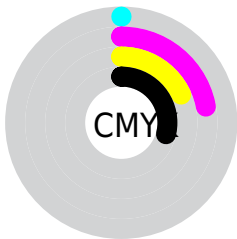
Blue (58%)



Red (71%)

Yellow (55%)

Blue (58%)

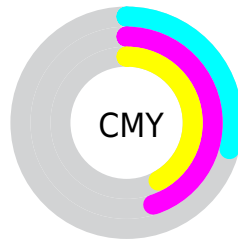


Cyan (0%)

Magenta (22%)

Yellow (18%)

Black (29%)



Cyan (29%)

Magenta (45%)

Yellow (42%)

Brightness & Saturation Gradients

These gradients show how the Android color 4290022803 changes by changing the brightness by 10 percent. The first figure shows a shift by +10% for each color and the second figure -10%.

Similar to the brightness gradients but the following saturation gradients show a change of the Android color 4290022803 by changing the saturation by 10% instead.



4290022803



4290022803

4294967295



4288246649



4293706697



4286536545



4294959077



4284826441



4294966271



4283247666



4281669405



4280418307



4278190080



4290022803



4290022803



4290018180



4290027426

 4290013557

 4290032049

 4290008933

 4290036673

 4290004310

 4290041296

 4289999687

 4290045919

 4289995064

 4290050542

 4289990440

 4290052094

 4289986588

 4290052095

Harmonies

Analogous

The Analogous color harmony consists of three colors that are next to each other on the color wheel.



4289564321



4290022803



4289957766

Triad

The Triadic color harmony groups three colors that are evenly spaced from another and form a triangle on the color wheel.



4290022803



4287536001



4286290865

Complementary

The Complementary color scheme is a pair of colors which are on the opposite of each other on the color wheel.



4290022803



4287476910

Split Complementary

Split-complementary colors differ from the complementary color scheme. The scheme consists of three colors, the original color and two neighbors of the complement color.



4285701800



4290022803



4286488204

Square

The Square scheme is like the rectangle color scheme, but the four colors are evenly spaced on the color wheel.



4290022803



4288583547



4285767579



4287403954

Rectangle

The Rectangle color scheme consists of four colors that form a rectangle on the color wheel.



4290022803



4289630591



4285767579



4286028974

Sweetspot

The Sweet Spot groups the original color and five complimentary colors.



4290022803



4293647069



4289629620



4285885549



4294309365



4285887861

Same Dimension

The Same Dimension uses a secret algorithm to generate beautiful new colors.



4290022803



4293635767



4290026125



4284043346



4288217112



4279894020

Inverse Universe

The Inverse Universe completely reimagines the original color for something new.



4290022803



4293635767



4287473588



4284043346



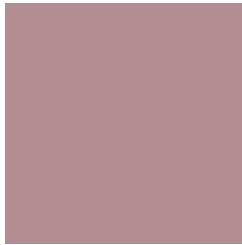
4288217112



4279894020

Previews

White Background



This preview shows how the Android color 4290022803 looks on a white background.

Color Contrast Check

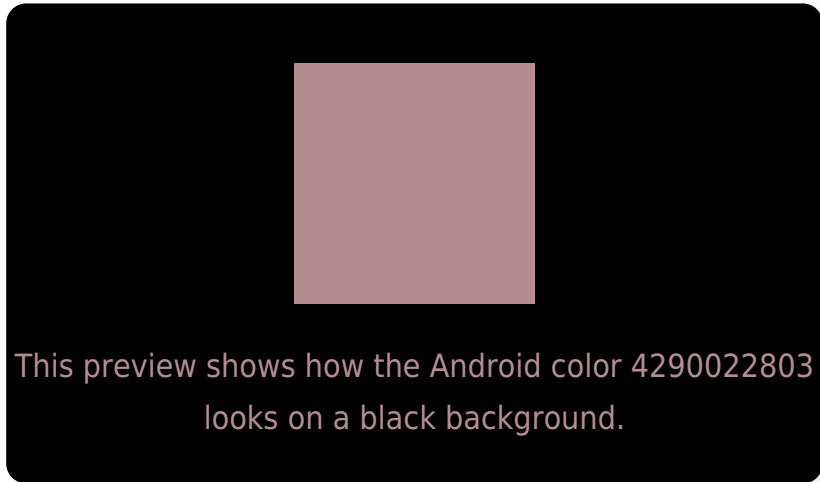
Large Text (above 18pt) WCAG AA × Fail

Any Text WCAG AA × Fail

Large Text (above 18pt) WCAG AAA × Fail

Any Text WCAG AAA × Fail

Black Background



Color Contrast Check

Large Text (above 18pt) WCAG AA ✓ Pass

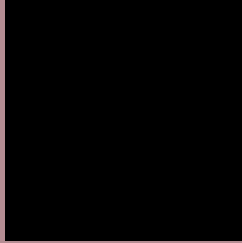
Any Text WCAG AA ✓ Pass

Large Text (above 18pt) WCAG AAA ✓ Pass

Any Text WCAG AAA ✓ Pass

If you want to check with other color combinations, try the [Color Contrast Checker](#).

Android 4290022803 Background



This preview shows how black text looks on a background with the Android color 4290022803.



This preview shows how white text looks on a background with the Android color 4290022803.

Color Blindness Simulation

Color vision deficiency is a very complex topic, and I could not describe the different causes any better than Wikipedia does, so if you want to learn more, you should check out their [article about color blindness](#).

Dichromacy



Trichromacy



Original Color
4290022803

Protanomaly
4288910230

Deuteranomaly
4289499282

Tritanomaly
4290088086

Monochromacy



Original Color
4290022803

Achromatopsia
4288256409

Achromatomaly
4288910743

CSS Examples

Text

The CSS property to change the color of the text to Android 4290022803 is called "color". The color property can be set on classes, ids or directly on the HTML element.

This example shows how text in the color `rgb(180, 141, 147)` looks like.

```
.text, #text, p{  
    color:rgb(180, 141, 147)  
}
```

If you want to add a text shadow in that color use the text-shadow property, you can generate a text shadow directly with our [CSS Text Shadow Generator](#).

Here you see how black text with a 4 pixel rgb(180, 141, 147) colored shadow looks like.

```
.shadow{ text-shadow: 4px 4px 2px rgb(180, 141, 147) }
```

Border

The CSS property to change the border of an element to Android 4290022803 is called "border". The border property can be set on classes, ids or directly on the HTML element.

This example shows the color as border, it can be applied via the CSS property "border" or "border-color".

```
.border, #border, table{ border:4px solid rgb(180, 141, 147) }
```

If only the border color should be changed use the property `border-color`.

```
.border{ border-color:rgb(180, 141, 147) }
```

If you want to add a box shadow in that color use:

Here you see how a box with a 4 pixel `rgb(180, 141, 147)` colored shadow looks like.

```
.boxshadow{ -moz-box-shadow:4px 4px 4px  
4px rgb(180, 141, 147); -webkit-box-  
shadow:4px 4px 4px 4px rgb(180, 141, 147);  
box-shadow:4px 4px 4px 4px rgb(180, 141,  
147) }
```

Background

The CSS property to change the background color of an element to Android 4290022803 is called "background". The background property can be set on classes, ids or directly on the HTML element.

```
.background, #background, body{  
background: rgb(180, 141, 147) }
```

If only the background color should be changed can be used:

```
.background{ background-color: rgb(180,  
141, 147) }
```

This example shows the color as background, it is applied via the CSS property "background".

To optimize and compress your CSS code, you can use our [online CSS compressor and optimizer](#) based on csstidy. If you want to create a linear or radial gradient as background or border, check our [CSS Gradient Generator](#).

Hey! You found this booklet interesting? Support Converting Colors with the new Membership Option!

The pro membership hides all ads, plus gives you double the colors in the color bucket, and more awesome pro features!

[Learn more, Memberships starting at \\$2.50/m!](#)

**Follow me
on Twitter!**

@ConvertingColor