

Converting Colors

Android(4290024081)

Have a look what the booklet for
Android(4290024081) contains.

Android(4290024081)	3
<i>Conversions</i>	4
<i>Details</i>	6
<i>Harmonies</i>	11
<i>Previews</i>	23
<i>Color Blindness Simulation</i>	26
<i>CSS Examples</i>	29

Color

Android(4290024081)

Conversions

Conversions Part 1

Format	Color
Hex	B49291
RGB	180, 146, 145
RGB Percent	71%, 57%, 57%
CMY	0.2941, 0.4275, 0.4314
CMYK	0.00, 0.19, 0.19, 0.29
HSL	2°, 19%, 64%
HSV	2°, 19%, 71%
XYZ	34.2121, 32.3054, 31.2205
YIQ	156.0520, 20.5850, 6.8970

Conversions

Conversions Part 2

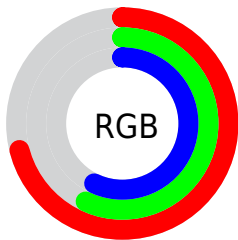
Format	Color
R_{YB}	180, 146, 145
Decimal	11834001
CIE _{Lab}	63.59, 12.59, 5.35
CIE _{LCh}	64, 13.682, 23.012
Yxy	32.3054, 0.3500, 0.3305
Android (android.graphics.Color)	4290024081 (0xFFB49291)
YUV	156.0520, -5.4486, 21.0024
Hunter-Lab	56.8378, 7.9774, 7.2191

Details

The Android color `4290024081` is a light color, and the websafe version is hex `CC9999`. A complement of this color would be `4287738804`, and the grayscale version is `4288453788`.

A 20% lighter version of the original color is `4293707975`, and `4286537567` is the 20% darker color. If you saturate the color by 10%, you get `4290019711`, and if you desaturate by 10%, it is `4290028451`.

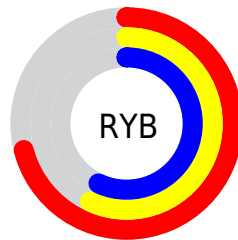
Distribution



Red (71%)

Green (57%)

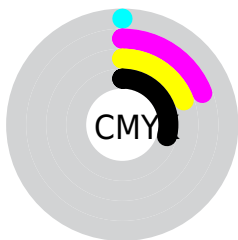
Blue (57%)



Red (71%)

Yellow (57%)

Blue (57%)

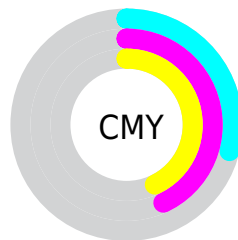


Cyan (0%)

Magenta (19%)

Yellow (19%)

Black (29%)



Cyan (29%)

Magenta (43%)

Yellow (43%)

Brightness & Saturation Gradients

These gradients show how the Android color 4290024081 changes by changing the brightness by 10 percent. The first figure shows a shift by +10% for each color and the second figure -10%.

Similar to the brightness gradients but the following saturation gradients show a change of the Android color 4290024081 by changing the saturation by 10% instead.

 4290024081

 4290024081


4294967295

 4288247927

 4293707975

 4286537567

 4294960355

 4284827719

 4283248945

 4281670684

 4280419073

 4278190080

 4290024081

 4290024081

 4290019711

 4290028451

 4290015085

 4290033077

 4290010715

 4290037447

 4290006089

 4290042073

 4290001719

 4290046443

 4289997093

 4290051069

 4289992723

 4290052095

 4289988097

 4289987840

Harmonies

Analogous

The Analogous color harmony consists of three colors that are next to each other on the color wheel.



4289827485



4290024081



4289762439

Triad

The Triadic color harmony groups three colors that are evenly spaced from another and form a triangle on the color wheel.



4290024081



4287405963



4287208626

Complementary

The Complementary color scheme is a pair of colors which are on the opposite of each other on the color wheel.



4290024081



4287738804

Split Complementary

Split-complementary colors differ from the complementary color scheme. The scheme consists of three colors, the original color and two neighbors of the complement color.



4286488493



4290024081



4286620055

Square

The Square scheme is like the rectangle color scheme, but the four colors are evenly spaced on the color wheel.



4290024081



4288322692



4286226851



4288256176

Rectangle

The Rectangle color scheme consists of four colors that form a rectangle on the color wheel.



4290024081



4289369987



4286226851



4286946737

Sweetspot

The Sweet Spot groups the original color and five complimentary colors.



4290024081



4293647837



4290023859



4285885805



4294309365



4285887861

Same Dimension

The Same Dimension uses a secret algorithm to generate beautiful new colors.



4290024081



4293637813



4290028433



4284043600



4288218112



4279894272

Inverse Universe

The Inverse Universe completely reimagines the original color for something new.



4287738804



4290111979



4287734452



4283455833



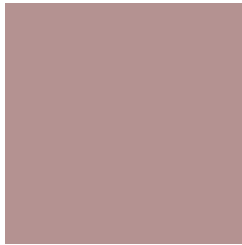
4278228377



4278196506

Previews

White Background



This preview shows how the Android color 4290024081 looks on a white background.

Color Contrast Check

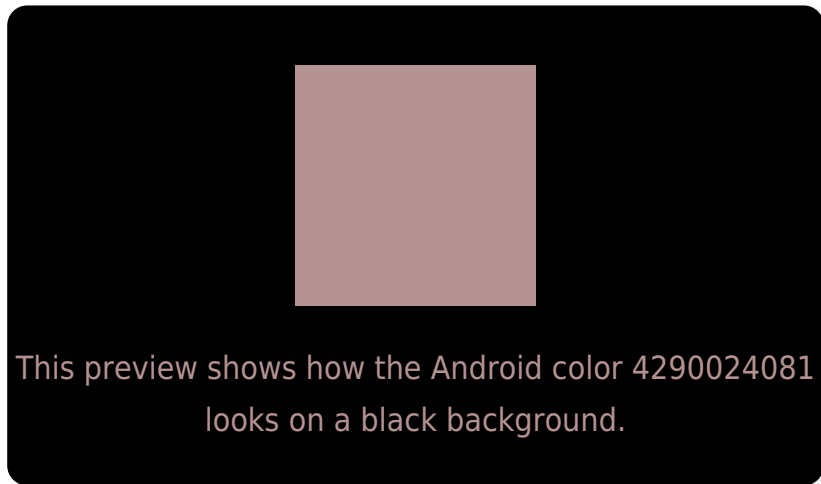
Large Text (above 18pt) WCAG AA × Fail

Any Text WCAG AA × Fail

Large Text (above 18pt) WCAG AAA × Fail

Any Text WCAG AAA × Fail

Black Background



Color Contrast Check

Large Text (above 18pt) WCAG AA ✓ Pass

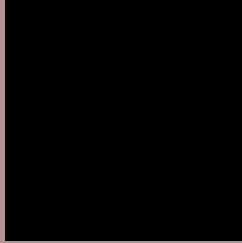
Any Text WCAG AA ✓ Pass

Large Text (above 18pt) WCAG AAA ✓ Pass

Any Text WCAG AAA ✓ Pass

If you want to check with other color combinations, try the [Color Contrast Checker](#).

Android 4290024081 Background



This preview shows how black text looks on a background with the Android color 4290024081.



This preview shows how white text looks on a background with the Android color 4290024081.

Color Blindness Simulation

Color vision deficiency is a very complex topic, and I could not describe the different causes any better than Wikipedia does, so if you want to learn more, you should check out their [article about color blindness](#).

Dichromacy



Original Color
4290024081

Protanopia
4288584341

Deuteranopia
4289566096



Tritanopia
4290089116

Trichromacy



Original Color
4290024081

Protanomaly
4289107860

Deuteranomaly
4289762448

Tritanomaly
4290089368

Monochromacy



Original Color
4290024081

Achromatopsia
4288453788

Achromatomaly
4289042584

CSS Examples

Text

The CSS property to change the color of the text to Android 4290024081 is called "color". The color property can be set on classes, ids or directly on the HTML element.

This example shows how text in the color `rgb(180, 146, 145)` looks like.

```
.text, #text, p{  
    color:rgb(180, 146, 145)  
}
```

If you want to add a text shadow in that color use the text-shadow property, you can generate a text shadow directly with our [CSS Text Shadow Generator](#).

Here you see how black text with a 4 pixel rgb(180, 146, 145) colored shadow looks like.

```
.shadow{ text-shadow: 4px 4px 2px rgb(180, 146, 145) }
```

Border

The CSS property to change the border of an element to Android 4290024081 is called "border". The border property can be set on classes, ids or directly on the HTML element.

This example shows the color as border, it can be applied via the CSS property "border" or "border-color".

```
.border, #border, table{ border:4px solid rgb(180, 146, 145) }
```

If only the border color should be changed use the property `border-color`.

```
.border{ border-color:rgb(180, 146, 145) }
```

If you want to add a box shadow in that color use:

Here you see how a box with a 4 pixel `rgb(180, 146, 145)` colored shadow looks like.

```
.boxshadow{ -moz-box-shadow:4px 4px 4px  
4px rgb(180, 146, 145); -webkit-box-  
shadow:4px 4px 4px 4px rgb(180, 146, 145);  
box-shadow:4px 4px 4px 4px rgb(180, 146,  
145) }
```

Background

The CSS property to change the background color of an element to Android 4290024081 is called "background". The background property can be set on classes, ids or directly on the HTML element.

```
.background, #background, body{  
background: rgb(180, 146, 145) }
```

If only the background color should be changed can be used:

```
.background{ background-color: rgb(180,  
146, 145) }
```

This example shows the color as background, it is applied via the CSS property "background".

To optimize and compress your CSS code, you can use our [online CSS compressor and optimizer](#) based on csstidy. If you want to create a linear or radial gradient as background or border, check our [CSS Gradient Generator](#).

Hey! You found this booklet interesting? Support Converting Colors with the new Membership Option!

The pro membership hides all ads, plus gives you double the colors in the color bucket, and more awesome pro features!

[Learn more, Memberships starting at \\$2.50/m!](#)

**Follow me
on Twitter!**

@ConvertingColor