

# Converting Colors

Android(4290026142)

Have a look what the booklet for  
Android(4290026142) contains.

<b>Android(4290026142)</b> .....	3
<i><b>Conversions</b></i> .....	4
<i><b>Details</b></i> .....	6
<i><b>Harmonies</b></i> .....	11
<i><b>Previews</b></i> .....	23
<i><b>Color Blindness Simulation</b></i> .....	26
<i><b>CSS Examples</b></i> .....	29

# **Color**

**Android(4290026142)**

# Conversions

## Conversions Part 1

Format	Color
Hex	B49A9E
RGB	180, 154, 158
RGB Percent	71%, 60%, 62%
CMY	0.2941, 0.3961, 0.3804
CMYK	0.00, 0.14, 0.12, 0.29
HSL	351°, 15%, 65%
HSV	351°, 14%, 71%
XYZ	36.5495, 35.2831, 37.2317
YIQ	162.2300, 14.2120, 6.7560

# Conversions

## Conversions Part 2

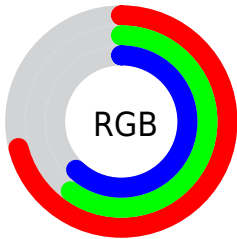
Format	Color
<a href="#">RYB</a>	<a href="#">180, 154, 158</a>
Decimal	<a href="#">11836062</a>
CIELab	<a href="#">65.97, 10.28, 1.47</a>
CIELCh	<a href="#">66, 10.387, 8.131</a>
Yxy	<a href="#">35.2831, 0.3351, 0.3235</a>
Android (android.graphics.Color)	<a href="#">4290026142</a> ( <a href="#">0xFFB49A9E</a> )
YUV	<a href="#">162.2300, -2.0854, 15.5843</a>
Hunter-Lab	<a href="#">59.3996, 5.8847, 4.4167</a>

# Details

The Android color `4290026142` is a light color, and the websafe version is hex `999999`. A complement of this color would be `4288328880`, and the grayscale version is `4288848546`.

A 20% lighter version of the original color is `4293710037`, and `4286539627` is the 20% darker color. If you saturate the color by 10%, you get `4290021519`, and if you desaturate by 10%, it is `4290030765`.

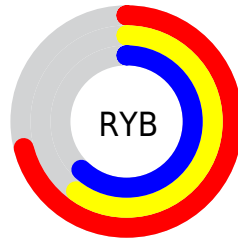
# Distribution



Red (71%)

Green (60%)

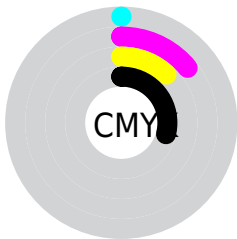
Blue (62%)



Red (71%)

Yellow (60%)

Blue (62%)

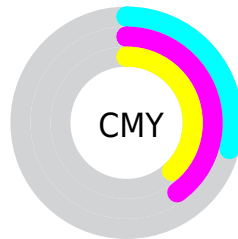


Cyan (0%)

Magenta (14%)

Yellow (12%)

Black (29%)



Cyan (29%)

Magenta (40%)

Yellow (38%)

# Brightness & Saturation Gradients

These gradients show how the Android color 4290026142 changes by changing the brightness by 10 percent. The first figure shows a shift by +10% for each color and the second figure -10%.

Similar to the brightness gradients but the following saturation gradients show a change of the Android color 4290026142 by changing the saturation by 10% instead.



 4290026142

 4290026142

4294967295

 4288249988

 4293710037

 4286539627

 4294962673

 4284895059

 4283316284

 4281737766

 4280356113

 4278190080

 4290026142

 4290026142

 4290021519

 4290030765

 4290016896

 4290035388

 4290012272

 4290040012

 4290007649

 4290044635

 4290003026

 4290049258

 4289998403

 4290052089

 4289993779

 4290052095

 4289989156

 4289986588

# Harmonies

## Analogous

The Analogous color harmony consists of three colors that are next to each other on the color wheel.



4289698727



4290026142



4290026389

# Triad

The Triadic color harmony groups three colors that are evenly spaced from another and form a triangle on the color wheel.



4290026142



4288390034



4287603633

# Complementary

The Complementary color scheme is a pair of colors which are on the opposite of each other on the color wheel.



4290026142



4288328880

# Split Complementary

Split-complementary colors differ from the complementary color scheme. The scheme consists of three colors, the original color and two neighbors of the complement color.



4287210923



4290026142



4287735193

# Square

The Square scheme is like the rectangle color scheme, but the four colors are evenly spaced on the color wheel.



4290026142



4289044622



4287276707



4288323763

# Rectangle

The Rectangle color scheme consists of four colors that form a rectangle on the color wheel.



4290026142



4289830033



4287276707



4287472816



# Sweetspot

The Sweet Spot groups the original color and five complimentary colors.



4290026142



4293648867



4289764020



4285886320



4294309365



4285887861



# Same Dimension

The Same Dimension uses a secret algorithm to generate beautiful new colors.



4290026142



4293641161



4290028442



4284043346



4288217112



4279894020



# Inverse Universe

The Inverse Universe completely reimagines the original color for something new.



4290026142



4293641161



4288326580



4284043346



4288217112

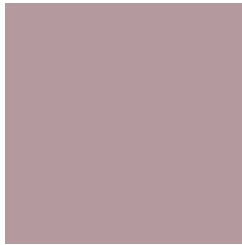


4279894020



# Previews

## White Background



This preview shows how the Android color 4290026142 looks on a white background.

## Color Contrast Check

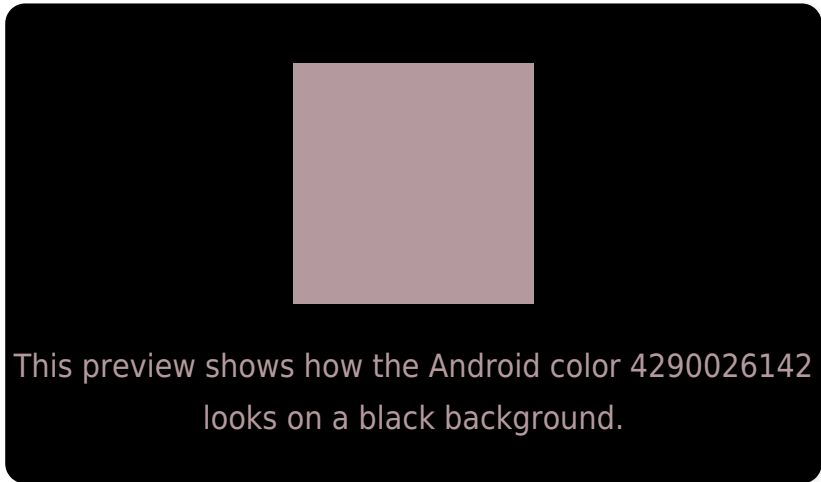
Large Text (above 18pt) WCAG AA × Fail

Any Text WCAG AA × Fail

Large Text (above 18pt) WCAG AAA × Fail

Any Text WCAG AAA × Fail

# Black Background



## Color Contrast Check

Large Text (above 18pt) WCAG AA ✓ Pass

Any Text WCAG AA ✓ Pass

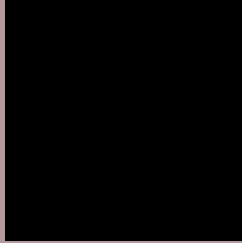
Large Text (above 18pt) WCAG AAA ✓ Pass

Any Text WCAG AAA ✓ Pass

If you want to check with other color combinations, try the [Color Contrast Checker](#).



# Android 4290026142 Background



This preview shows how black text looks on a background with the Android color 4290026142.



This preview shows how white text looks on a background with the Android color 4290026142.

# Color Blindness Simulation

Color vision deficiency is a very complex topic, and I could not describe the different causes any better than Wikipedia does, so if you want to learn more, you should check out their [article about color blindness](#).

## Dichromacy



**Original Color**

4290026142

**Protanopia**

4288913569

**Deuteranopia**

4289829790



**Tritanopia**  
4290091429

# Trichromacy



**Original Color**

4290026142

**Protanomaly**

4289306272

**Deuteranomaly**

4289895326

**Tritanomaly**

4290091426

# Monochromacy



**Original Color**

4290026142

**Achromatopsia**

4288848546

**Achromatomaly**

4289306529

# CSS Examples

## Text

The CSS property to change the color of the text to Android 4290026142 is called "color". The color property can be set on classes, ids or directly on the HTML element.

This example shows how text in the color `rgb(180, 154, 158)` looks like.

```
.text, #text, p{  
    color:rgb(180, 154, 158)  
}
```

If you want to add a text shadow in that color use the text-shadow property, you can generate a text shadow directly with our [CSS Text Shadow Generator](#).

Here you see how black text with a 4 pixel rgb(180, 154, 158) colored shadow looks like.

```
.shadow{ text-shadow: 4px 4px 2px rgb(180, 154, 158) }
```

## Border

The CSS property to change the border of an element to Android 4290026142 is called "border". The border property can be set on classes, ids or directly on the HTML element.

This example shows the color as border, it can be applied via the CSS property "border" or "border-color".

```
.border, #border, table{ border:4px solid rgb(180, 154, 158) }
```

If only the border color should be changed use the property `border-color`.

```
.border{ border-color:rgb(180, 154, 158) }
```

If you want to add a box shadow in that color use:

Here you see how a box with a 4 pixel `rgb(180, 154, 158)` colored shadow looks like.

```
.boxshadow{ -moz-box-shadow:4px 4px 4px  
4px rgb(180, 154, 158); -webkit-box-  
shadow:4px 4px 4px 4px rgb(180, 154, 158);  
box-shadow:4px 4px 4px 4px rgb(180, 154,  
158) }
```

# Background

The CSS property to change the background color of an element to Android 4290026142 is called "background". The background property can be set on classes, ids or directly on the HTML element.

```
.background, #background, body{  
background: rgb(180, 154, 158) }
```

If only the background color should be changed can be used:

```
.background{ background-color: rgb(180,  
154, 158) }
```

This example shows the color as background, it is applied via the CSS property "background".

To optimize and compress your CSS code, you can use our [online CSS compressor and optimizer](#) based on csstidy. If you want to create a linear or radial gradient as background or border, check our [CSS Gradient Generator](#).



Hey! You found this booklet interesting? Support Converting Colors with the new Membership Option!

The pro membership hides all ads, plus gives you double the colors in the color bucket, and more awesome pro features!

**[Learn more, Memberships starting at \\$2.50/m!](#)**

**Follow me  
on Twitter!**

@ConvertingColor