

Converting Colors

Android(4290027144)

Have a look what the booklet for
Android(4290027144) contains.

Android(4290027144)	3
<i>Conversions</i>	4
<i>Details</i>	6
<i>Harmonies</i>	11
<i>Previews</i>	23
<i>Color Blindness Simulation</i>	26
<i>CSS Examples</i>	29

Color

Android(4290027144)

Conversions

Conversions Part 1

Format	Color
Hex	B49E88
RGB	180, 158, 136
RGB Percent	71%, 62%, 53%
CMY	0.2941, 0.3804, 0.4667
CMYK	0.00, 0.12, 0.24, 0.29
HSL	30°, 23%, 62%
HSV	30°, 24%, 71%
XYZ	35.4932, 35.9346, 28.3579
YIQ	162.0700, 20.1740, -2.1780

Conversions

Conversions Part 2

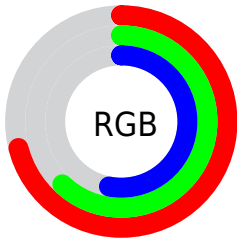
Format	Color
RYB	180, 180, 136
Decimal	11837064
CIELab	66.47, 4.58, 14.47
CIElCh	66, 15.176, 72.419
Yxy	35.9346, 0.3557, 0.3601
Android (android.graphics.Color)	4290027144 (0xFFB49E88)
YUV	162.0700, -12.8525, 15.7246
Hunter-Lab	59.9455, 0.7837, 13.9140

Details

The Android color `4290027144` is a light color, and the websafe version is hex `999999`. A complement of this color would be `4287143604`, and the grayscale version is `4288848546`.

A 20% lighter version of the original color is `4293711293`, and `4286540630` is the 20% darker color. If you saturate the color by 10%, you get `4290024822`, and if you desaturate by 10%, it is `4290029466`.

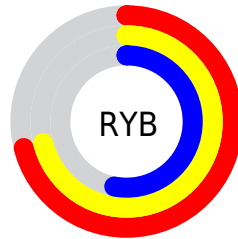
Distribution



Red (71%)

Green (62%)

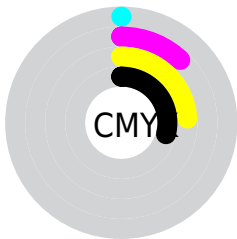
Blue (53%)



Red (71%)

Yellow (71%)

Blue (53%)

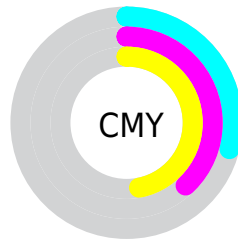


Cyan (0%)

Magenta (12%)

Yellow (24%)

Black (29%)



Cyan (29%)

Magenta (38%)

Yellow (47%)

Brightness & Saturation Gradients

These gradients show how the Android color 4290027144 changes by changing the brightness by 10 percent. The first figure shows a shift by +10% for each color and the second figure -10%.

Similar to the brightness gradients but the following saturation gradients show a change of the Android color 4290027144 by changing the saturation by 10% instead.



4290027144



4290027144

4294967295



4288250991



4293711293



4286540630



4294963673



4284830527



4294967286



4283251753



4281673236



4280291584



4278190080



4290027144



4290027144



4290024822



4290029466

 4290022500

 4290031788

 4290020178

 4290034110

 4290017856

 4290036432

 4290015534

 4290038754

 4290013212

 4290041076

 4290010890

 4290043391

 4290009600

 4290045695

 4290047999

Harmonies

Analogous

The Analogous color harmony consists of three colors that are next to each other on the color wheel.



4290615952



4290027144



4289176455

Triad

The Triadic color harmony groups three colors that are evenly spaced from another and form a triangle on the color wheel.



4290027144



4286556839



4289436854

Complementary

The Complementary color scheme is a pair of colors which are on the opposite of each other on the color wheel.



4290027144



4287143604

Split Complementary

Split-complementary colors differ from the complementary color scheme. The scheme consists of three colors, the original color and two neighbors of the complement color.



4288324028



4290027144



4286556339

Square

The Square scheme is like the rectangle color scheme, but the four colors are evenly spaced on the color wheel.



4290027144



4287146393



4287210939



4290288042

Rectangle

The Rectangle color scheme consists of four colors that form a rectangle on the color wheel.



4290027144



4288456074



4287210939



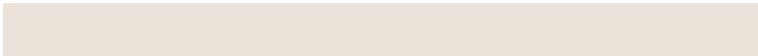
4289109689

Sweetspot

The Sweet Spot groups the original color and five complimentary colors.



4290027144



4293649114



4290021534



4285886828



4294309365



4285887861

Same Dimension

The Same Dimension uses a secret algorithm to generate beautiful new colors.



4290027144



4293642663



4290032776



4284044624



4288236800



4279897344

Inverse Universe

The Inverse Universe completely reimagines the original color for something new.



4287143604



4289186283



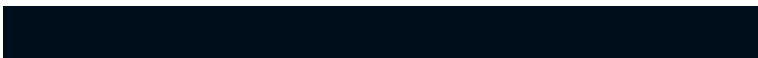
4287137972



4283454809



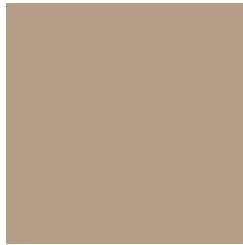
4278209945



4278193434

Previews

White Background



This preview shows how the Android color 4290027144 looks on a white background.

Color Contrast Check

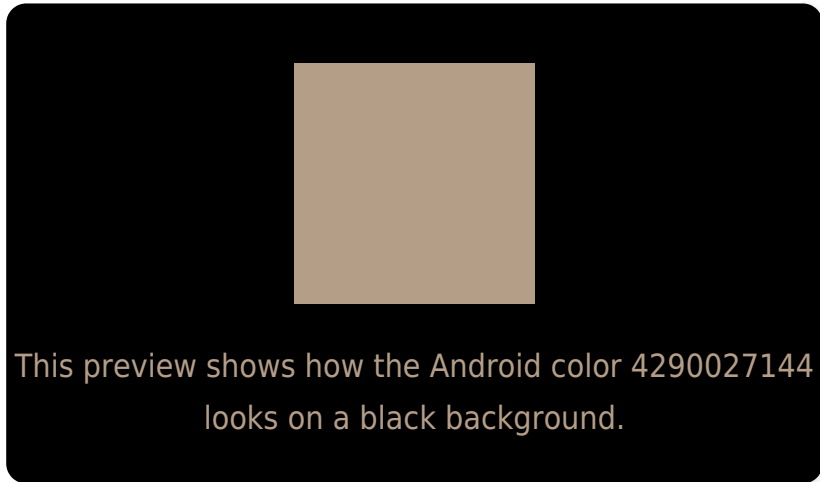
Large Text (above 18pt) WCAG AA × Fail

Any Text WCAG AA × Fail

Large Text (above 18pt) WCAG AAA × Fail

Any Text WCAG AAA × Fail

Black Background



Color Contrast Check

Large Text (above 18pt) WCAG AA ✓ Pass

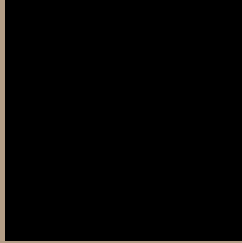
Any Text WCAG AA ✓ Pass

Large Text (above 18pt) WCAG AAA ✓ Pass

Any Text WCAG AAA ✓ Pass

If you want to check with other color combinations, try the [Color Contrast Checker](#).

Android 4290027144 Background



This preview shows how black text looks on a background with the Android color 4290027144.



This preview shows how white text looks on a background with the Android color 4290027144.

Color Blindness Simulation

Color vision deficiency is a very complex topic, and I could not describe the different causes any better than Wikipedia does, so if you want to learn more, you should check out their [article about color blindness](#).

Dichromacy



Original Color
4290027144

Protanopia
4289372554

Deuteranopia
4290419848



Tritanopia
4290288294

Trichromacy



Original Color
4290027144

Protanomaly
4289634441

Deuteranomaly
4290289032

Tritanomaly
4290223003

Monochromacy



Original Color
4290027144

Achromatopsia
4288848546

Achromatomaly
4289307033

CSS Examples

Text

The CSS property to change the color of the text to Android 4290027144 is called "color". The color property can be set on classes, ids or directly on the HTML element.

This example shows how text in the color `rgb(180, 158, 136)` looks like.

```
.text, #text, p{  
    color:rgb(180, 158, 136)  
}
```

If you want to add a text shadow in that color use the text-shadow property, you can generate a text shadow directly with our [CSS Text Shadow Generator](#).

Here you see how black text with a 4 pixel rgb(180, 158, 136) colored shadow looks like.

```
.shadow{ text-shadow: 4px 4px 2px rgb(180, 158, 136) }
```

Border

The CSS property to change the border of an element to Android 4290027144 is called "border". The border property can be set on classes, ids or directly on the HTML element.

This example shows the color as border, it can be applied via the CSS property "border" or "border-color".

```
.border, #border, table{ border:4px solid rgb(180, 158, 136) }
```

If only the border color should be changed use the property `border-color`.

```
.border{ border-color:rgb(180, 158, 136) }
```

If you want to add a box shadow in that color use:

Here you see how a box with a 4 pixel `rgb(180, 158, 136)` colored shadow looks like.

```
.boxshadow{ -moz-box-shadow:4px 4px 4px  
4px rgb(180, 158, 136); -webkit-box-  
shadow:4px 4px 4px 4px rgb(180, 158, 136);  
box-shadow:4px 4px 4px 4px rgb(180, 158,  
136) }
```

Background

The CSS property to change the background color of an element to Android 4290027144 is called "background". The background property can be set on classes, ids or directly on the HTML element.

```
.background, #background, body{  
background: rgb(180, 158, 136) }
```

If only the background color should be changed can be used:

```
.background{ background-color: rgb(180,  
158, 136) }
```

This example shows the color as background, it is applied via the CSS property "background".

To optimize and compress your CSS code, you can use our [online CSS compressor and optimizer](#) based on csstidy. If you want to create a linear or radial gradient as background or border, check our [CSS Gradient Generator](#).

Hey! You found this booklet interesting? Support Converting Colors with the new Membership Option!

The pro membership hides all ads, plus gives you double the colors in the color bucket, and more awesome pro features!

[Learn more, Memberships starting at \\$2.50/m!](#)

**Follow me
on Twitter!**

@ConvertingColor