

Converting Colors

Android(4290080627)

Have a look what the booklet for
Android(4290080627) contains.

Android(4290080627)	3
<i>Conversions</i>	4
<i>Details</i>	6
<i>Harmonies</i>	11
<i>Previews</i>	23
<i>Color Blindness Simulation</i>	26
<i>CSS Examples</i>	29

Color

Android(4290080627)

Conversions

Conversions Part 1

Format	Color
Hex	B56F73
RGB	181, 111, 115
RGB Percent	71%, 44%, 45%
CMY	0.2902, 0.5647, 0.5490
CMYK	0.00, 0.39, 0.36, 0.29
HSL	357°, 32%, 57%
HSV	357°, 39%, 71%
XYZ	27.8350, 22.4304, 19.0821
YIQ	132.3860, 40.4360, 16.0840

Conversions

Conversions Part 2

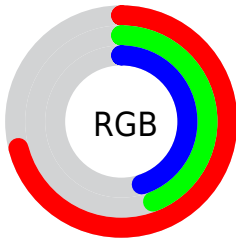
Format	Color
R_{YB}	181, 111, 115
Decimal	11890547
CIE _{Lab}	54.48, 28.24, 9.60
CIE _{LCh}	54, 29.827, 18.766
Yxy	22.4304, 0.4014, 0.3234
Android (android.graphics.Color)	4290080627 (0xFFB56F73)
YUV	132.3860, -8.5713, 42.6345
Hunter-Lab	47.3608, 22.0271, 9.2641

Details

The Android color **4290080627** is a dark color, and the websafe version is hex **996666**. A complement of this color would be **4285511089**, and the grayscale version is **4286874756**.

A 20% lighter version of the original color is **4293895335**, and **4286463555** is the 20% darker color. If you saturate the color by 10%, you get **4290076002**, and if you desaturate by 10%, it is **4290085252**.

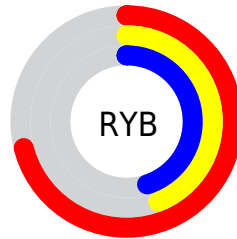
Distribution



Red (71%)

Green (44%)

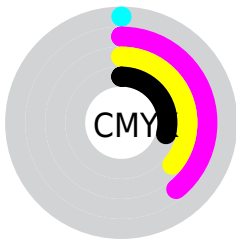
Blue (45%)



Red (71%)

Yellow (44%)

Blue (45%)

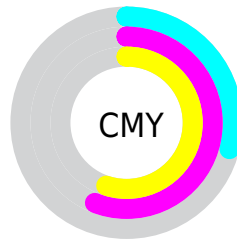


Cyan (0%)

Magenta (39%)

Yellow (36%)

Black (29%)



Cyan (29%)

Magenta (56%)

Yellow (55%)

Brightness & Saturation Gradients

These gradients show how the Android color 4290080627 changes by changing the brightness by 10 percent. The first figure shows a shift by +10% for each color and the second figure -10%.

Similar to the brightness gradients but the following saturation gradients show a change of the Android color 4290080627 by changing the saturation by 10% instead.

 4290080627

 4290080627


4294967295

 4288239194

 4293895335

 4286463555

 4294950850

 4284687917

 4294958046

 4282977817

 4294965498

 4281466880

 4278976512

 4278190080

 4290080627

 4290080627

 4290076002

 4290085252

 4290071377

 4290089877

 4290066752

 4290094502

 4290062127

 4290099127

 4290057502

 4290104008

 4290052621

 4290108633

 4290052106

 4290113258

 4290117628

 4290117631

Harmonies

Analogous

The Analogous color harmony consists of three colors that are next to each other on the color wheel.



4289621901



4290080627



4289623389

Triad

The Triadic color harmony groups three colors that are evenly spaced from another and form a triangle on the color wheel.



4290080627



4284910688



4283271348

Complementary

The Complementary color scheme is a pair of colors which are on the opposite of each other on the color wheel.



4290080627



4285511089

Split Complementary

Split-complementary colors differ from the complementary color scheme. The scheme consists of three colors, the original color and two neighbors of the complement color.



4280585896



4290080627



4282749047

Square

The Square scheme is like the rectangle color scheme, but the four colors are evenly spaced on the color wheel.



4290080627



4286809681



4280586386



4286021555

Rectangle

The Rectangle color scheme consists of four colors that form a rectangle on the color wheel.



4290080627



4288903763



4280586386



4282354354

Sweetspot

The Sweet Spot groups the original color and five complimentary colors.



4290080627



4293643984



4289753013



4285883750



4294309365



4285887861

Same Dimension

The Same Dimension uses a secret algorithm to generate beautiful new colors.



4290080627



4293623685



4290088303



4284043345



4288217097



4279894017

Inverse Universe

The Inverse Universe completely reimagines the original color for something new.



4290080627



4293623685



4285503413



4284043345



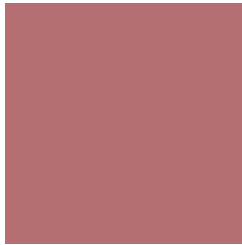
4288217097



4279894017

Previews

White Background



This preview shows how the Android color 4290080627 looks on a white background.

Color Contrast Check

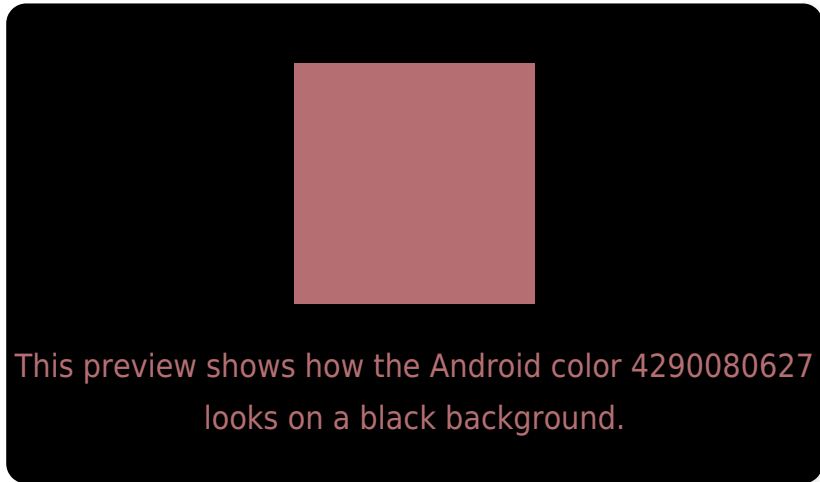
Large Text (above 18pt) WCAG AA ✓ Pass

Any Text WCAG AA × Fail

Large Text (above 18pt) WCAG AAA × Fail

Any Text WCAG AAA × Fail

Black Background



Color Contrast Check

Large Text (above 18pt) WCAG AA ✓ Pass

Any Text WCAG AA ✓ Pass

Large Text (above 18pt) WCAG AAA ✓ Pass

Any Text WCAG AAA × Fail

If you want to check with other color combinations, try the [Color Contrast Checker](#).

Android 4290080627 Background



This preview shows how black text looks on a background with the Android color 4290080627.



This preview shows how white text looks on a background with the Android color 4290080627.

Color Blindness Simulation

Color vision deficiency is a very complex topic, and I could not describe the different causes any better than Wikipedia does, so if you want to learn more, you should check out their [article about color blindness](#).

Dichromacy



Original Color
4290080627

Protanopia
4287005309

Deuteranopia
4288052848

Trichromacy



Original Color
4290080627

Protanomaly
4288117625

Deuteranomaly
4288772465

Tritanomaly
4290080374

Monochromacy



Original Color
4290080627

Achromatopsia
4286874756

Achromatomaly
4288052350

CSS Examples

Text

The CSS property to change the color of the text to Android 4290080627 is called "color". The color property can be set on classes, ids or directly on the HTML element.

This example shows how text in the color `rgb(181, 111, 115)` looks like.

```
.text, #text, p{  
    color:rgb(181, 111, 115)  
}
```

If you want to add a text shadow in that color use the text-shadow property, you can generate a text shadow directly with our [CSS Text Shadow Generator](#).

Here you see how black text with a 4 pixel rgb(181, 111, 115) colored shadow looks like.

```
.shadow{ text-shadow: 4px 4px 2px rgb(181, 111, 115) }
```

Border

The CSS property to change the border of an element to Android 4290080627 is called "border". The border property can be set on classes, ids or directly on the HTML element.

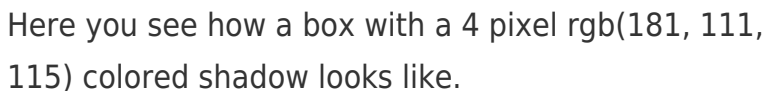
This example shows the color as border, it can be applied via the CSS property "border" or "border-color".

```
.border, #border, table{ border:4px solid rgb(181, 111, 115) }
```

If only the border color should be changed use the property `border-color`.

```
.border{ border-color:rgb(181, 111, 115) }
```

If you want to add a box shadow in that color use:



Here you see how a box with a 4 pixel `rgb(181, 111, 115)` colored shadow looks like.

```
.boxshadow{ -moz-box-shadow:4px 4px 4px 4px rgb(181, 111, 115); -webkit-box-shadow:4px 4px 4px 4px rgb(181, 111, 115); box-shadow:4px 4px 4px 4px rgb(181, 111, 115) }
```

Background

The CSS property to change the background color of an element to Android 4290080627 is called "background". The background property can be set on classes, ids or directly on the HTML element.

```
.background, #background, body{  
background: rgb(181, 111, 115) }
```

If only the background color should be changed can be used:

```
.background{ background-color: rgb(181,  
111, 115) }
```

This example shows the color as background, it is applied via the CSS property "background".

To optimize and compress your CSS code, you can use our [online CSS compressor and optimizer](#) based on csstidy. If you want to create a linear or radial gradient as background or border, check our [CSS Gradient Generator](#).

Hey! You found this booklet interesting? Support Converting Colors with the new Membership Option!

The pro membership hides all ads, plus gives you double the colors in the color bucket, and more awesome pro features!

[Learn more, Memberships starting at \\$2.50/m!](#)

**Follow me
on Twitter!**

@ConvertingColor