

Converting Colors

Android(4290084221)

Have a look what the booklet for
Android(4290084221) contains.

Android(4290084221)	3
<i>Conversions</i>	4
<i>Details</i>	6
<i>Harmonies</i>	11
<i>Previews</i>	23
<i>Color Blindness Simulation</i>	26
<i>CSS Examples</i>	29

Color

Android(4290084221)

Conversions

Conversions Part 1

Format	Color
Hex	B57D7D
RGB	181, 125, 125
RGB Percent	71%, 49%, 49%
CMY	0.2902, 0.5098, 0.5098
CMYK	0.00, 0.31, 0.31, 0.29
HSL	0°, 27%, 60%
HSV	0°, 31%, 71%
XYZ	30.0913, 25.9717, 22.8291
YIQ	141.7440, 33.3760, 11.8720

Conversions

Conversions Part 2

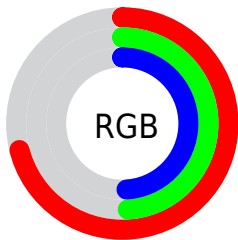
Format	Color
R_{YB}	181, 125, 125
Decimal	11894141
CIE Lab	58.01, 21.77, 8.79
CIE LCh	58, 23.475, 21.985
Yxy	25.9717, 0.3814, 0.3292
Android (android.graphics.Color)	4290084221 (0xFFB57D7D)
YUV	141.7440, -8.2548, 34.4275
Hunter-Lab	50.9624, 16.2132, 9.1142

Details

The Android color `4290084221` is a dark color, and the websafe version is hex `996666`. A complement of this color would be `4286428597`, and the grayscale version is `4287532686`.

A 20% lighter version of the original color is `4293833394`, and `4286532428` is the 20% darker color. If you saturate the color by 10%, you get `4290079595`, and if you desaturate by 10%, it is `4290088847`.

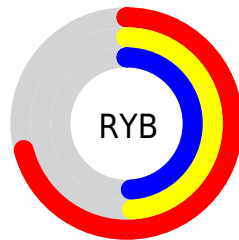
Distribution



Red (71%)

Green (49%)

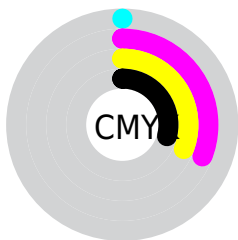
Blue (49%)



Red (71%)

Yellow (49%)

Blue (49%)

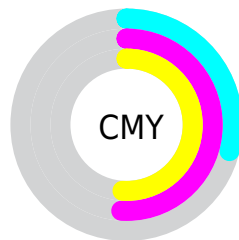


Cyan (0%)

Magenta (31%)

Yellow (31%)

Black (29%)



Cyan (29%)

Magenta (51%)

Yellow (51%)

Brightness & Saturation Gradients

These gradients show how the Android color 4290084221 changes by changing the brightness by 10 percent. The first figure shows a shift by +10% for each color and the second figure -10%.

Similar to the brightness gradients but the following saturation gradients show a change of the Android color 4290084221 by changing the saturation by 10% instead.

 4290084221

 4290084221

4294967295

 4288242788

 4293833394

 4286532428

 4294954701

 4284757046

 4294961897

 4283112992

 4281534473

 4279894017

 4278190080

 4290084221

 4290084221

 4290079595

 4290088847

 4290074969

 4290093473

 4290070343

 4290098099

 4290065717

 4290102725

 4290061091

 4290107608

 4290056208

 4290112234

 4290052096

 4290116860

 4290117631

Harmonies

Analogous

The Analogous color harmony consists of three colors that are next to each other on the color wheel.



4289756562



4290084221



4289692012

Triad

The Triadic color harmony groups three colors that are evenly spaced from another and form a triangle on the color wheel.



4290084221



4285764722



4285173684

Complementary

The Complementary color scheme is a pair of colors which are on the opposite of each other on the color wheel.



4290084221



4286428597

Split Complementary

Split-complementary colors differ from the complementary color scheme. The scheme consists of three colors, the original color and two neighbors of the complement color.



4283602091



4290084221



4284258181

Square

The Square scheme is like the rectangle color scheme, but the four colors are evenly spaced on the color wheel.



4290084221



4287270757



4283340698



4287072433

Rectangle

The Rectangle color scheme consists of four colors that form a rectangle on the color wheel.



4290084221



4289037925



4283340698



4284584370

Sweetspot

The Sweet Spot groups the original color and five complimentary colors.



4290084221



4293645781



4290084277



4285884520



4294309365



4285887861

Same Dimension

The Same Dimension uses a secret algorithm to generate beautiful new colors.



4290084221



4293629076



4290091389



4284043344



4288217088



4279894016

Inverse Universe

The Inverse Universe completely reimagines the original color for something new.



4286428597



4287949803



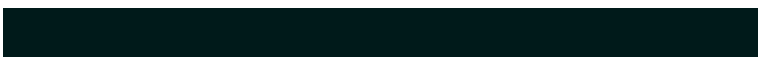
4286421429



4283455833



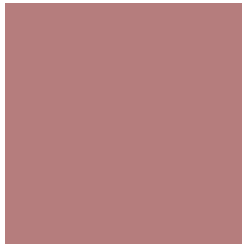
4278229401



4278196762

Previews

White Background



This preview shows how the Android color 4290084221 looks on a white background.

Color Contrast Check

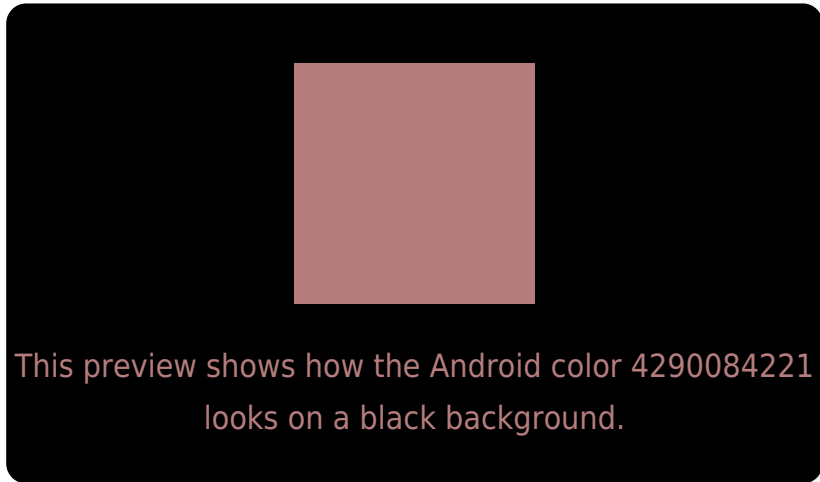
Large Text (above 18pt) WCAG AA ✓ Pass

Any Text WCAG AA ✗ Fail

Large Text (above 18pt) WCAG AAA ✗ Fail

Any Text WCAG AAA ✗ Fail

Black Background



Color Contrast Check

Large Text (above 18pt) WCAG AA ✓ Pass

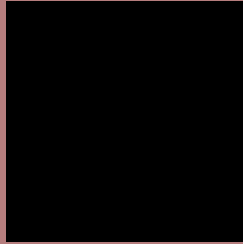
Any Text WCAG AA ✓ Pass

Large Text (above 18pt) WCAG AAA ✓ Pass

Any Text WCAG AAA × Fail

If you want to check with other color combinations, try the [Color Contrast Checker](#).

Android 4290084221 Background



This preview shows how black text looks on a background with the Android color 4290084221.



This preview shows how white text looks on a background with the Android color 4290084221.

Color Blindness Simulation

Color vision deficiency is a very complex topic, and I could not describe the different causes any better than Wikipedia does, so if you want to learn more, you should check out their [article about color blindness](#).

Dichromacy



Original Color


4290084221

Protanopia

4287662981

Deuteranopia

4288644987



Tritanopia
4290149509

Trichromacy



Original Color
4290084221

Protanomaly
4288513666

Deuteranomaly
4289168252

Tritanomaly
4290149506

Monochromacy



Original Color
4290084221

Achromatopsia
4287532686

Achromatomaly
4288448648

CSS Examples

Text

The CSS property to change the color of the text to Android 4290084221 is called "color". The color property can be set on classes, ids or directly on the HTML element.

This example shows how text in the color `rgb(181, 125, 125)` looks like.

```
.text, #text, p{  
    color:rgb(181, 125, 125)  
}
```

If you want to add a text shadow in that color use the text-shadow property, you can generate a text shadow directly with our [CSS Text Shadow Generator](#).

Here you see how black text with a 4 pixel rgb(181, 125, 125) colored shadow looks like.

```
.shadow{ text-shadow: 4px 4px 2px rgb(181, 125, 125) }
```

Border

The CSS property to change the border of an element to Android 4290084221 is called "border". The border property can be set on classes, ids or directly on the HTML element.

This example shows the color as border, it can be applied via the CSS property "border" or "border-color".

```
.border, #border, table{ border:4px solid rgb(181, 125, 125) }
```

If only the border color should be changed use the property `border-color`.

```
.border{ border-color:rgb(181, 125, 125) }
```

If you want to add a box shadow in that color use:

Here you see how a box with a 4 pixel `rgb(181, 125, 125)` colored shadow looks like.

```
.boxshadow{ -moz-box-shadow:4px 4px 4px  
4px rgb(181, 125, 125); -webkit-box-  
shadow:4px 4px 4px 4px rgb(181, 125, 125);  
box-shadow:4px 4px 4px 4px rgb(181, 125,  
125) }
```

Background

The CSS property to change the background color of an element to Android 4290084221 is called "background". The background property can be set on classes, ids or directly on the HTML element.

```
.background, #background, body{  
background: rgb(181, 125, 125) }
```

If only the background color should be changed can be used:

```
.background{ background-color: rgb(181,  
125, 125) }
```

This example shows the color as background, it is applied via the CSS property "background".

To optimize and compress your CSS code, you can use our [online CSS compressor and optimizer](#) based on csstidy. If you want to create a linear or radial gradient as background or border, check our [CSS Gradient Generator](#).

Hey! You found this booklet interesting? Support Converting Colors with the new Membership Option!

The pro membership hides all ads, plus gives you double the colors in the color bucket, and more awesome pro features!

[Learn more, Memberships starting at \\$2.50/m!](#)

**Follow me
on Twitter!**

@ConvertingColor