

Converting Colors

Android(4290085244)

Have a look what the booklet for
Android(4290085244) contains.

Android(4290085244)	3
<i>Conversions</i>	4
<i>Details</i>	6
<i>Harmonies</i>	11
<i>Previews</i>	23
<i>Color Blindness Simulation</i>	26
<i>CSS Examples</i>	29

Color

Android(4290085244)

Conversions

Conversions Part 1

Format	Color
Hex	B5817C
RGB	181, 129, 124
RGB Percent	71%, 51%, 49%
CMY	0.2902, 0.4941, 0.5137
CMYK	0.00, 0.29, 0.31, 0.29
HSL	5°, 28%, 60%
HSV	5°, 31%, 71%
XYZ	30.5444, 26.9795, 22.6665
YIQ	143.9780, 32.5970, 9.4690

Conversions

Conversions Part 2

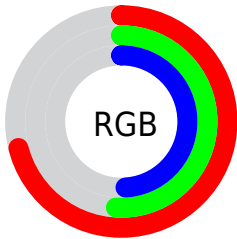
Format	Color
R_{YB}	181, 129, 124
Decimal	11895164
CIE _{Lab}	58.96, 19.40, 10.70
CIE _{LCh}	59, 22.152, 28.885
Yxy	26.9795, 0.3809, 0.3364
Android (android.graphics.Color)	4290085244 (0xFFB5817C)
YUV	143.9780, -9.8492, 32.4683
Hunter-Lab	51.9418, 14.0689, 10.4862

Details

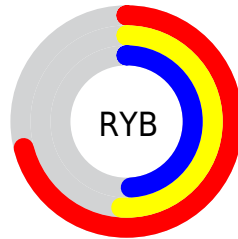
The Android color `4290085244` is a dark color, and the websafe version is hex `CC9999`. A complement of this color would be `4286361781`, and the grayscale version is `4287664272`.

A 20% lighter version of the original color is `4293834416`, and `4286533451` is the 20% darker color. If you saturate the color by 10%, you get `4290080874`, and if you desaturate by 10%, it is `4290089614`.

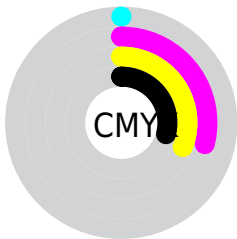
Distribution



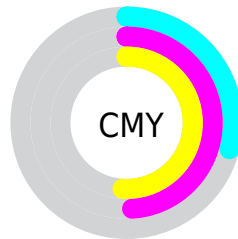
- Red (71%)
- Green (51%)
- Blue (49%)



- Red (71%)
- Yellow (51%)
- Blue (49%)



- Cyan (0%)
- Magenta (29%)
- Yellow (31%)
- Black (29%)



- Cyan (29%)
- Magenta (49%)
- Yellow (51%)

Brightness & Saturation Gradients

These gradients show how the Android color 4290085244 changes by changing the brightness by 10 percent. The first figure shows a shift by +10% for each color and the second figure -10%.

Similar to the brightness gradients but the following saturation gradients show a change of the Android color 4290085244 by changing the saturation by 10% instead.



4290085244



4290085244

4294967295



4288243811



4293834416



4286533451



4294955724



4284823605



4294962920



4283114015



4281535496



4280025089



4278190080



4290085244



4290085244



4290080874



4290089614

 4290076760

 4290093728

 4290072390

 4290098098

 4290068276

 4290102212

 4290063905

 4290106583

 4290059791

 4290110697

 4290056192

 4290115067

 4290117631

Harmonies

Analogous

The Analogous color harmony consists of three colors that are next to each other on the color wheel.



4289953935



4290085244



4289562221

Triad

The Triadic color harmony groups three colors that are evenly spaced from another and form a triangle on the color wheel.



4290085244



4285699961



4285894836

Complementary

The Complementary color scheme is a pair of colors which are on the opposite of each other on the color wheel.



4290085244



4286361781

Split Complementary

Split-complementary colors differ from the complementary color scheme. The scheme consists of three colors, the original color and two neighbors of the complement color.



4284323247



4290085244



4284389772

Square

The Square scheme is like the rectangle color scheme, but the four colors are evenly spaced on the color wheel.



4290085244



4287140460



4283734176



4287662512

Rectangle

The Rectangle color scheme consists of four colors that form a rectangle on the color wheel.



4290085244



4288907880



4283734176



4285305524

Sweetspot

The Sweet Spot groups the original color and five complimentary colors.



4290085244



4293646293



4290084016



4285885032



4294309365



4285887861

Same Dimension

The Same Dimension uses a secret algorithm to generate beautiful new colors.



4290085244



4293630353



4290092412



4284043600



4288220416



4279894528

Inverse Universe

The Inverse Universe completely reimagines the original color for something new.



4286361781



4287751147



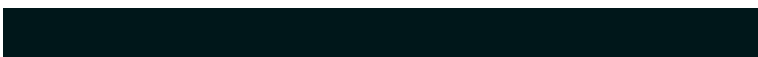
4286354613



4283455577



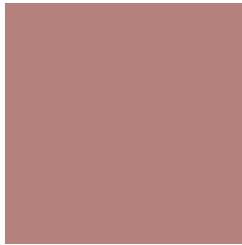
4278226073



4278195994

Previews

White Background



This preview shows how the Android color 4290085244 looks on a white background.

Color Contrast Check

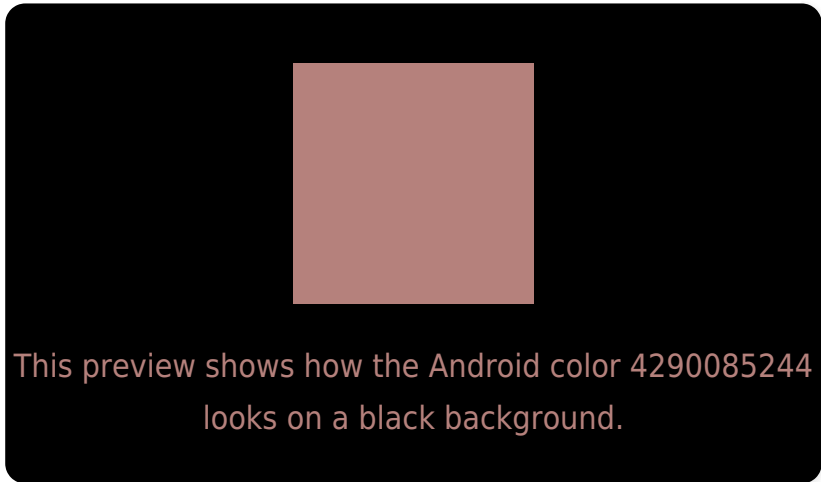
Large Text (above 18pt) WCAG AA ✓ Pass

Any Text WCAG AA ✗ Fail

Large Text (above 18pt) WCAG AAA ✗ Fail

Any Text WCAG AAA ✗ Fail

Black Background



Color Contrast Check

Large Text (above 18pt) WCAG AA ✓ Pass

Any Text WCAG AA ✓ Pass

Large Text (above 18pt) WCAG AAA ✓ Pass

Any Text WCAG AAA × Fail

If you want to check with other color combinations, try the [Color Contrast Checker](#).

Android 4290085244 Background



This preview shows how black text looks on a background with the Android color 4290085244.



This preview shows how white text looks on a background with the Android color 4290085244.

Color Blindness Simulation

Color vision deficiency is a very complex topic, and I could not describe the different causes any better than Wikipedia does, so if you want to learn more, you should check out their [article about color blindness](#).

Dichromacy





Tritanopia
4290150281

Trichromacy



Original Color
4290085244

Protanomaly
4288645504

Deuteranomaly
4289365627

Tritanomaly
4290150532

Monochromacy



Original Color
4290085244

Achromatopsia
4287664272

Achromatomaly
4288514953

CSS Examples

Text

The CSS property to change the color of the text to Android 4290085244 is called "color". The color property can be set on classes, ids or directly on the HTML element.

This example shows how text in the color `rgb(181, 129, 124)` looks like.

```
.text, #text, p{  
    color:rgb(181, 129, 124)  
}
```

If you want to add a text shadow in that color use the text-shadow property, you can generate a text shadow directly with our [CSS Text Shadow Generator](#).

Here you see how black text with a 4 pixel rgb(181, 129, 124) colored shadow looks like.

```
.shadow{ text-shadow: 4px 4px 2px rgb(181, 129, 124) }
```

Border

The CSS property to change the border of an element to Android 4290085244 is called "border". The border property can be set on classes, ids or directly on the HTML element.

This example shows the color as border, it can be applied via the CSS property "border" or "border-color".

```
.border, #border, table{ border:4px solid rgb(181, 129, 124) }
```

If only the border color should be changed use the property border-color.

```
.border{ border-color:rgb(181, 129, 124) }
```

If you want to add a box shadow in that color use:

Here you see how a box with a 4 pixel rgb(181, 129, 124) colored shadow looks like.

```
.boxshadow{ -moz-box-shadow:4px 4px 4px  
4px rgb(181, 129, 124); -webkit-box-  
shadow:4px 4px 4px 4px rgb(181, 129, 124);  
box-shadow:4px 4px 4px 4px rgb(181, 129,  
124) }
```

Background

The CSS property to change the background color of an element to Android 4290085244 is called "background". The background property can be set on classes, ids or directly on the HTML element.

```
.background, #background, body{  
background: rgb(181, 129, 124) }
```

If only the background color should be changed can be used:

```
.background{ background-color: rgb(181,  
129, 124) }
```

This example shows the color as background, it is applied via the CSS property "background".

To optimize and compress your CSS code, you can use our [online CSS compressor and optimizer](#) based on csstidy. If you want to create a linear or radial gradient as background or border, check our [CSS Gradient Generator](#).

Hey! You found this booklet interesting? Support Converting Colors with the new Membership Option!

The pro membership hides all ads, plus gives you double the colors in the color bucket, and more awesome pro features!

[Learn more, Memberships starting at \\$2.50/m!](#)

**Follow me
on Twitter!**

@ConvertingColor