

Converting Colors

Android(4290087048)

Have a look what the booklet for
Android(4290087048) contains.

| | |
|--|----|
| Android(4290087048) | 3 |
| <i>Conversions</i> | 4 |
| <i>Details</i> | 6 |
| <i>Harmonies</i> | 11 |
| <i>Previews</i> | 23 |
| <i>Color Blindness Simulation</i> | 26 |
| <i>CSS Examples</i> | 29 |

Color

Android(4290087048)

Conversions

Conversions Part 1

| Format | Color |
|-------------|---------------------------|
| Hex | B58888 |
| RGB | 181, 136, 136 |
| RGB Percent | 71%, 53%, 53% |
| CMY | 0.2902, 0.4667, 0.4667 |
| CMYK | 0.00, 0.25, 0.25, 0.29 |
| HSL | 0°, 23%, 62% |
| HSV | 0°, 25%, 71% |
| XYZ | 32.3041, 29.2096, 27.2280 |
| YIQ | 149.4550, 26.8200, 9.5400 |

Conversions

Conversions Part 2

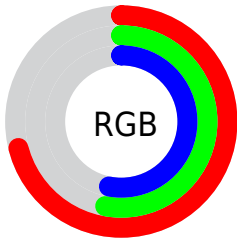
| Format | Color |
|-------------------------------------|-------------------------------|
| RYB | 181, 136, 136 |
| Decimal | 11896968 |
| CIELab | 60.97, 17.18, 6.70 |
| CIElCh | 61, 18.442, 21.293 |
| Yxy | 29.2096, 0.3640, 0.3292 |
| Android (android.graphics.Color) | 4290087048 (0xFFB58888) |
| YUV | 149.4550, -6.6333, 27.6650 |
| Hunter-Lab | 54.0460, 12.1120, 7.9623 |

Details

The Android color `4290087048` is a light color, and the websafe version is hex `CC9999`. A complement of this color would be `4287149493`, and the grayscale version is `4288059030`.

A 20% lighter version of the original color is `4293836477`, and `4286535254` is the 20% darker color. If you saturate the color by 10%, you get `4290082422`, and if you desaturate by 10%, it is `4290091674`.

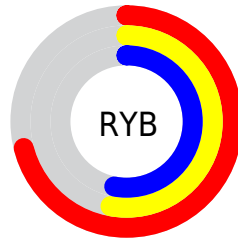
Distribution



Red (71%)

Green (53%)

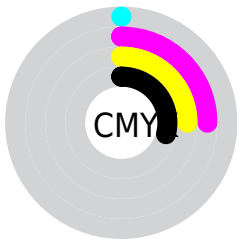
Blue (53%)



Red (71%)

Yellow (53%)

Blue (53%)

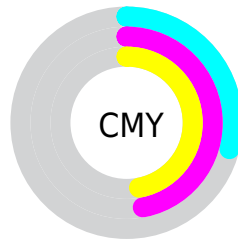


Cyan (0%)

Magenta (25%)

Yellow (25%)

Black (29%)



Cyan (29%)

Magenta (47%)

Yellow (47%)

Brightness & Saturation Gradients

These gradients show how the Android color 4290087048 changes by changing the brightness by 10 percent. The first figure shows a shift by +10% for each color and the second figure -10%.

Similar to the brightness gradients but the following saturation gradients show a change of the Android color 4290087048 by changing the saturation by 10% instead.

 4290087048

 4290087048

4294967295

 4288310895

 4293836477

 4286535254

 4294957529

 4284825151

 4294964981

 4283181097

 4281602837

 4280352768

 4278190080

 4290087048

 4290087048

 4290082422

 4290091674

 4290077796

 4290096300

 4290073170

 4290100926

 4290068544

 4290105552

 4290063661

 4290110435

 4290059035

 4290115061

 4290054409

 4290117631

 4290052096

Harmonies

Analogous

The Analogous color harmony consists of three colors that are next to each other on the color wheel.



4289824921



4290087048



4289760122

Triad

The Triadic color harmony groups three colors that are evenly spaced from another and form a triangle on the color wheel.



4290087048



4286683774



4286224051

Complementary

The Complementary color scheme is a pair of colors which are on the opposite of each other on the color wheel.



4290087048



4287149493

Split Complementary

Split-complementary colors differ from the complementary color scheme. The scheme consists of three colors, the original color and two neighbors of the complement color.



4285176492



4290087048



4285570190

Square

The Square scheme is like the rectangle color scheme, but the four colors are evenly spaced on the color wheel.



4290087048



4287862389



4284914846



4287664561

Rectangle

The Rectangle color scheme consists of four colors that form a rectangle on the color wheel.



4290087048



4289302389



4284914846



4285831345

Sweetspot

The Sweet Spot groups the original color and five complimentary colors.



4290087048



4293647066



4290087093



4285885548



4294309365



4285887861

Same Dimension

The Same Dimension uses a secret algorithm to generate beautiful new colors.



4290087048



4293633188



4290092936



4284043344



4288217088



4279894016

Inverse Universe

The Inverse Universe completely reimagines the original color for something new.



4287149493



4288998379



4287143861



4283455833



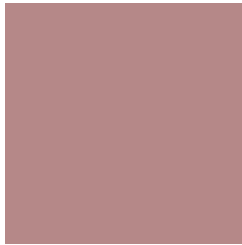
4278229401



4278196762

Previews

White Background



This preview shows how the Android color 4290087048 looks on a white background.

Color Contrast Check

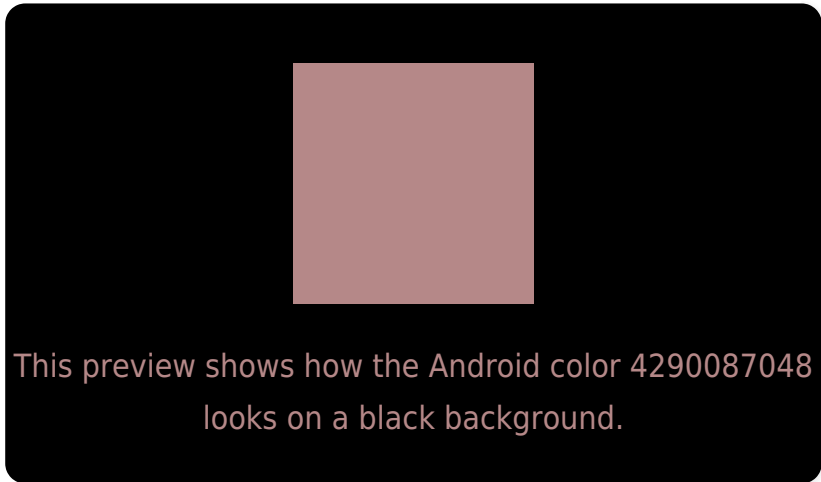
Large Text (above 18pt) WCAG AA ✓ Pass

Any Text WCAG AA ✗ Fail

Large Text (above 18pt) WCAG AAA ✗ Fail

Any Text WCAG AAA ✗ Fail

Black Background



Color Contrast Check

Large Text (above 18pt) WCAG AA ✓ Pass

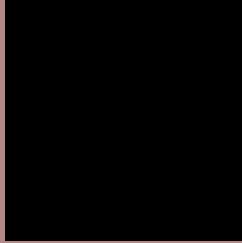
Any Text WCAG AA ✓ Pass

Large Text (above 18pt) WCAG AAA ✓ Pass

Any Text WCAG AAA × Fail

If you want to check with other color combinations, try the [Color Contrast Checker](#).

Android 4290087048 Background



This preview shows how black text looks on a background with the Android color 4290087048.




This preview shows how white text looks on a background with the Android color 4290087048.

Color Blindness Simulation

Color vision deficiency is a very complex topic, and I could not describe the different causes any better than Wikipedia does, so if you want to learn more, you should check out their [article about color blindness](#).

Dichromacy





Tritanopia
4290152337

Trichromacy



Original Color
4290087048

Protanomaly
4288843660

Deuteranomaly
4289432711

Tritanomaly
4290152334

Monochromacy



Original Color
4290087048

Achromatopsia
4287993237

Achromatomaly
4288778384

CSS Examples

Text

The CSS property to change the color of the text to Android 4290087048 is called "color". The color property can be set on classes, ids or directly on the HTML element.

This example shows how text in the color `rgb(181, 136, 136)` looks like.

```
.text, #text, p{  
    color:rgb(181, 136, 136)  
}
```

If you want to add a text shadow in that color use the text-shadow property, you can generate a text shadow directly with our [CSS Text Shadow Generator](#).

Here you see how black text with a 4 pixel rgb(181, 136, 136) colored shadow looks like.

```
.shadow{ text-shadow: 4px 4px 2px rgb(181, 136, 136) }
```

Border

The CSS property to change the border of an element to Android 4290087048 is called "border". The border property can be set on classes, ids or directly on the HTML element.

This example shows the color as border, it can be applied via the CSS property "border" or "border-color".

```
.border, #border, table{ border:4px solid rgb(181, 136, 136) }
```

If only the border color should be changed use the property `border-color`.

```
.border{ border-color:rgb(181, 136, 136) }
```

If you want to add a box shadow in that color use:

Here you see how a box with a 4 pixel `rgb(181, 136, 136)` colored shadow looks like.

```
.boxshadow{ -moz-box-shadow:4px 4px 4px 4px rgb(181, 136, 136); -webkit-box-shadow:4px 4px 4px 4px rgb(181, 136, 136); box-shadow:4px 4px 4px 4px rgb(181, 136, 136) }
```

Background

The CSS property to change the background color of an element to Android 4290087048 is called "background". The background property can be set on classes, ids or directly on the HTML element.

```
.background, #background, body{  
background: rgb(181, 136, 136) }
```

If only the background color should be changed can be used:

```
.background{ background-color: rgb(181,  
136, 136) }
```

This example shows the color as background, it is applied via the CSS property "background".

To optimize and compress your CSS code, you can use our [online CSS compressor and optimizer](#) based on csstidy. If you want to create a linear or radial gradient as background or border, check our [CSS Gradient Generator](#).

Hey! You found this booklet interesting? Support Converting Colors with the new Membership Option!

The pro membership hides all ads, plus gives you double the colors in the color bucket, and more awesome pro features!

[Learn more, Memberships starting at \\$2.50/m!](#)

**Follow me
on Twitter!**

@ConvertingColor