

# Converting Colors

Android(4290090652)

Have a look what the booklet for  
Android(4290090652) contains.

<b>Android(4290090652)</b> .....	3
<b><i>Conversions</i></b> .....	4
<b><i>Details</i></b> .....	6
<b><i>Harmonies</i></b> .....	11
<b><i>Previews</i></b> .....	23
<b><i>Color Blindness Simulation</i></b> .....	26
<b><i>CSS Examples</i></b> .....	29

# **Color**

**Android(4290090652)**

# Conversions

## Conversions Part 1

Format	Color
Hex	B5969C
RGB	181, 150, 156
RGB Percent	71%, 59%, 61%
CMY	0.2902, 0.4118, 0.3882
CMYK	0.00, 0.17, 0.14, 0.29
HSL	348°, 17%, 65%
HSV	348°, 17%, 71%
XYZ	35.9632, 34.0367, 36.1268
YIQ	159.9530, 16.5500, 8.4380

# Conversions

## Conversions Part 2

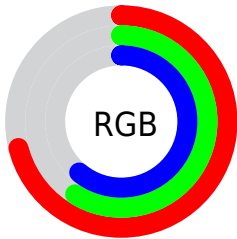
Format	Color
<a href="#">RYB</a>	<a href="#">181, 150, 156</a>
Decimal	<a href="#">11900572</a>
CIELab	<a href="#">64.99, 12.54, 1.18</a>
CIELCh	<a href="#">65, 12.593, 5.387</a>
Yxy	<a href="#">34.0367, 0.3389, 0.3207</a>
Android (android.graphics.Color)	<a href="#">4290090652</a> ( <a href="#">0xFFB5969C</a> )
YUV	<a href="#">159.9530, -1.9488, 18.4582</a>
Hunter-Lab	<a href="#">58.3410, 7.9359, 4.1243</a>

# Details

The Android color `4290090652` is a light color, and the websafe version is hex `CC9999`. A complement of this color would be `4288066991`, and the grayscale version is `4288716960`.

A 20% lighter version of the original color is `4293774546`, and `4286604137` is the 20% darker color. If you saturate the color by 10%, you get `4290086029`, and if you desaturate by 10%, it is `4290095275`.

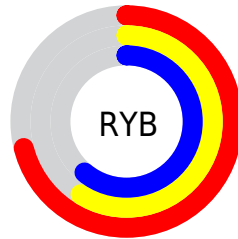
# Distribution



Red (71%)

Green (59%)

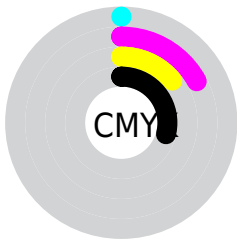
Blue (61%)



Red (71%)

Yellow (59%)

Blue (61%)

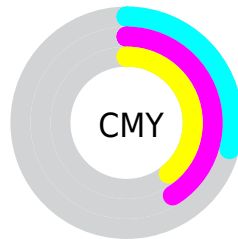


Cyan (0%)

Magenta (17%)

Yellow (14%)

Black (29%)



Cyan (29%)

Magenta (41%)

Yellow (39%)

# Brightness & Saturation Gradients

These gradients show how the Android color 4290090652 changes by changing the brightness by 10 percent. The first figure shows a shift by +10% for each color and the second figure -10%.

Similar to the brightness gradients but the following saturation gradients show a change of the Android color 4290090652 by changing the saturation by 10% instead.



 4290090652

 4290090652

4294967295

 4288314498

 4293774546

 4286604137

 4294961391

 4284894033

 4283315258

 4281802532

 4280420367

 4278190080

 4290090652

 4290090652

 4290086029

 4290095275

 4290081407

 4290099897

 4290076784

 4290104520

 4290072162

 4290109142

 4290067539

 4290114021

 4290062660

 4290117620

 4290058038

 4290117631

 4290053415

 4290052131

# Harmonies

## Analogous

The Analogous color harmony consists of three colors that are next to each other on the color wheel.



4289632167



4290090652



4290090897

# Triad

The Triadic color harmony groups three colors that are evenly spaced from another and form a triangle on the color wheel.



4290090652



4288192907



4287144370

# Complementary

The Complementary color scheme is a pair of colors which are on the opposite of each other on the color wheel.



4290090652



4288066991

# Split Complementary

Split-complementary colors differ from the complementary color scheme. The scheme consists of three colors, the original color and two neighbors of the complement color.



4286686378



4290090652



4287406996

# Square

The Square scheme is like the rectangle color scheme, but the four colors are evenly spaced on the color wheel.



4290090652



4289044103



4286817439



4287930036

# Rectangle

The Rectangle color scheme consists of four colors that form a rectangle on the color wheel.



4290090652



4289894796



4286817439



4286948016



# Sweetspot

The Sweet Spot groups the original color and five complimentary colors.



4290090652



4293648353



4289697461



4285886064



4294309365



4285887861



# Same Dimension

The Same Dimension uses a secret algorithm to generate beautiful new colors.



4290090652



4293638595



4290092950



4284043346



4288217118



4279894021



# Inverse Universe

The Inverse Universe completely reimagines the original color for something new.



4290090652



4293638595



4288064693



4284043346



4288217118

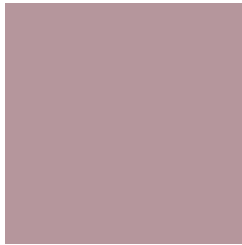


4279894021



# Previews

## White Background



This preview shows how the Android color 4290090652 looks on a white background.

## Color Contrast Check

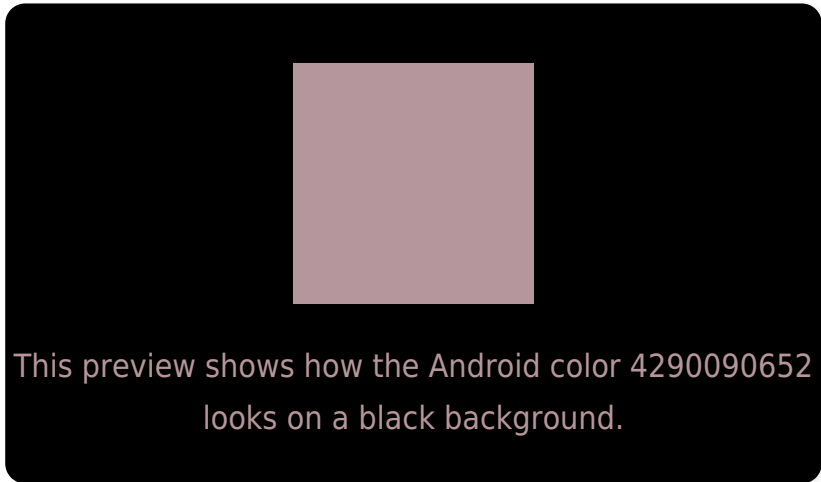
Large Text (above 18pt) WCAG AA × Fail

Any Text WCAG AA × Fail

Large Text (above 18pt) WCAG AAA × Fail

Any Text WCAG AAA × Fail

# Black Background



## Color Contrast Check

Large Text (above 18pt) WCAG AA ✓ Pass

Any Text WCAG AA ✓ Pass

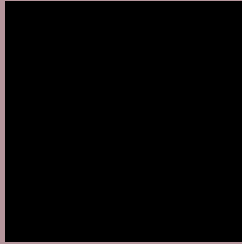
Large Text (above 18pt) WCAG AAA ✓ Pass

Any Text WCAG AAA ✓ Pass

If you want to check with other color combinations, try the [Color Contrast Checker](#).



# Android 4290090652 Background



This preview shows how black text looks on a background with the Android color 4290090652.



This preview shows how white text looks on a background with the Android color 4290090652.

# Color Blindness Simulation

Color vision deficiency is a very complex topic, and I could not describe the different causes any better than Wikipedia does, so if you want to learn more, you should check out their [article about color blindness](#).

## Dichromacy



**Original Color**


[4290090652](#)

**Protanopia**

[4288716192](#)

**Deuteranopia**

[4289632667](#)



**Tritanopia**  
4290155937

# Trichromacy



**Original Color**  
4290090652

**Protanomaly**  
4289239711

**Deuteranomaly**  
4289829019

**Tritanomaly**  
4290155935

# Monochromacy



**Original Color**  
4290090652

**Achromatopsia**  
4288716960

**Achromatomaly**  
4289240223

# CSS Examples

## Text

The CSS property to change the color of the text to Android 4290090652 is called "color". The color property can be set on classes, ids or directly on the HTML element.

This example shows how text in the color `rgb(181, 150, 156)` looks like.

```
.text, #text, p{  
    color:rgb(181, 150, 156)  
}
```

If you want to add a text shadow in that color use the text-shadow property, you can generate a text shadow directly with our [CSS Text Shadow Generator](#).

Here you see how black text with a 4 pixel rgb(181, 150, 156) colored shadow looks like.

```
.shadow{ text-shadow: 4px 4px 2px rgb(181, 150, 156) }
```

## Border

The CSS property to change the border of an element to Android 4290090652 is called "border". The border property can be set on classes, ids or directly on the HTML element.

This example shows the color as border, it can be applied via the CSS property "border" or "border-color".

```
.border, #border, table{ border:4px solid rgb(181, 150, 156) }
```

If only the border color should be changed use the property `border-color`.

```
.border{ border-color:rgb(181, 150, 156) }
```

If you want to add a box shadow in that color use:

Here you see how a box with a 4 pixel `rgb(181, 150, 156)` colored shadow looks like.

```
.boxshadow{ -moz-box-shadow:4px 4px 4px  
4px rgb(181, 150, 156); -webkit-box-  
shadow:4px 4px 4px 4px rgb(181, 150, 156);  
box-shadow:4px 4px 4px 4px rgb(181, 150,  
156) }
```

# Background

The CSS property to change the background color of an element to Android 4290090652 is called "background". The background property can be set on classes, ids or directly on the HTML element.

```
.background, #background, body{  
background: rgb(181, 150, 156) }
```

If only the background color should be changed can be used:

```
.background{ background-color: rgb(181,  
150, 156) }
```

This example shows the color as background, it is applied via the CSS property "background".

To optimize and compress your CSS code, you can use our [online CSS compressor and optimizer](#) based on csstidy. If you want to create a linear or radial gradient as background or border, check our [CSS Gradient Generator](#).



Hey! You found this booklet interesting? Support Converting Colors with the new Membership Option!

The pro membership hides all ads, plus gives you double the colors in the color bucket, and more awesome pro features!

**[Learn more, Memberships starting at \\$2.50/m!](#)**

**Follow me  
on Twitter!**

@ConvertingColor