

Converting Colors

Android(4290091164)

Have a look what the booklet for
Android(4290091164) contains.

Android(4290091164)	3
<i>Conversions</i>	4
<i>Details</i>	6
<i>Harmonies</i>	11
<i>Previews</i>	23
<i>Color Blindness Simulation</i>	26
<i>CSS Examples</i>	29

Color

Android(4290091164)

Conversions

Conversions Part 1

Format	Color
Hex	B5989C
RGB	181, 152, 156
RGB Percent	71%, 60%, 61%
CMY	0.2902, 0.4039, 0.3882
CMYK	0.00, 0.16, 0.14, 0.29
HSL	352°, 16%, 65%
HSV	352°, 16%, 71%
XYZ	36.2850, 34.6805, 36.2341
YIQ	161.1270, 16.0000, 7.3920

Conversions

Conversions Part 2

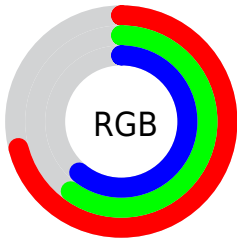
Format	Color
RYB	181, 152, 156
Decimal	11901084
CIELab	65.50, 11.43, 1.92
CIElCh	65, 11.586, 9.540
Yxy	34.6805, 0.3385, 0.3235
Android (android.graphics.Color)	4290091164 (0xFFB5989C)
YUV	161.1270, -2.5276, 17.4286
Hunter-Lab	58.8902, 6.9245, 4.7430

Details

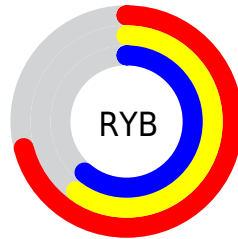
The Android color `4290091164` is a light color, and the websafe version is hex `CC9999`. A complement of this color would be `4288198065`, and the grayscale version is `4288782753`.

A 20% lighter version of the original color is `4293775058`, and `4286604649` is the 20% darker color. If you saturate the color by 10%, you get `4290086540`, and if you desaturate by 10%, it is `4290095788`.

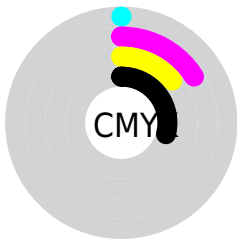
Distribution



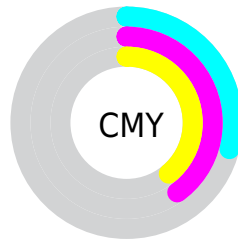
- Red (71%)
- Green (60%)
- Blue (61%)



- Red (71%)
- Yellow (60%)
- Blue (61%)



- Cyan (0%)
- Magenta (16%)
- Yellow (14%)
- Black (29%)



- Cyan (29%)
- Magenta (40%)
- Yellow (39%)

Brightness & Saturation Gradients

These gradients show how the Android color 4290091164 changes by changing the brightness by 10 percent. The first figure shows a shift by +10% for each color and the second figure -10%.

Similar to the brightness gradients but the following saturation gradients show a change of the Android color 4290091164 by changing the saturation by 10% instead.

 4290091164

 4290091164

4294967295

 4288315010

 4293775058

 4286604649

 4294962159

 4284960081

 4283315770

 4281803044

 4280421135

 4278190080

 4290091164

 4290091164

 4290086540

 4290095788

 4290081917

 4290100411

 4290077293

 4290105035

 4290072670

 4290109658

 4290067790

 4290114538

 4290063166

 4290117626

 4290058543

 4290117631

 4290053919

 4290052121

Harmonies

Analogous

The Analogous color harmony consists of three colors that are next to each other on the color wheel.



4289763751



4290091164



4290025874

Triad

The Triadic color harmony groups three colors that are evenly spaced from another and form a triangle on the color wheel.



4290091164



4288193167



4287406770

Complementary

The Complementary color scheme is a pair of colors which are on the opposite of each other on the color wheel.



4290091164



4288198065

Split Complementary

Split-complementary colors differ from the complementary color scheme. The scheme consists of three colors, the original color and two neighbors of the complement color.



4286948524



4290091164



4287473047

Square

The Square scheme is like the rectangle color scheme, but the four colors are evenly spaced on the color wheel.



4290091164



4288978827



4287014306



4288192435

Rectangle

The Rectangle color scheme consists of four colors that form a rectangle on the color wheel.



4290091164



4289829774



4287014306



4287210417

Sweetspot

The Sweet Spot groups the original color and five complimentary colors.



4290091164



4293648352



4289829045



4285886063



4294309365



4285887861

Same Dimension

The Same Dimension uses a secret algorithm to generate beautiful new colors.



4290091164



4293639876



4290093720



4284043346



4288217109



4279894020

Inverse Universe

The Inverse Universe completely reimagines the original color for something new.



4290091164



4293639876



4288195509



4284043346



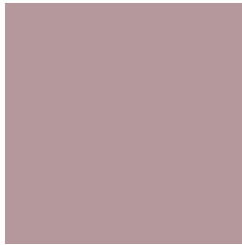
4288217109



4279894020

Previews

White Background



This preview shows how the Android color 4290091164 looks on a white background.

Color Contrast Check

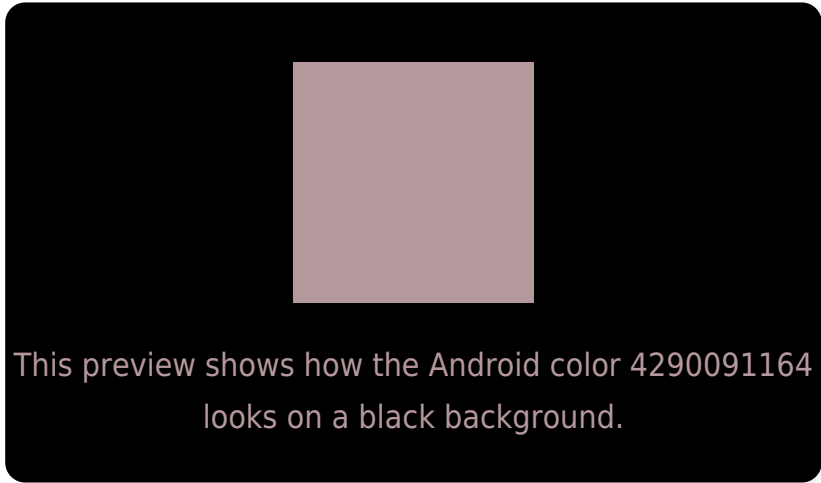
Large Text (above 18pt) WCAG AA × Fail

Any Text WCAG AA × Fail

Large Text (above 18pt) WCAG AAA × Fail

Any Text WCAG AAA × Fail

Black Background



Color Contrast Check

Large Text (above 18pt) WCAG AA ✓ Pass

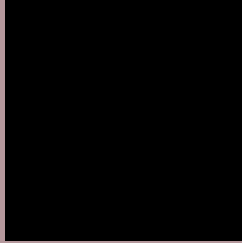
Any Text WCAG AA ✓ Pass

Large Text (above 18pt) WCAG AAA ✓ Pass

Any Text WCAG AAA ✓ Pass

If you want to check with other color combinations, try the [Color Contrast Checker](#).

Android 4290091164 Background



This preview shows how black text looks on a background with the Android color 4290091164.



This preview shows how white text looks on a background with the Android color 4290091164.

Color Blindness Simulation

Color vision deficiency is a very complex topic, and I could not describe the different causes any better than Wikipedia does, so if you want to learn more, you should check out their [article about color blindness](#).


Dichromacy



Original Color
4290091164

Protanopia
4288847520

Deuteranopia
4289763996



Tritanopia
4290156451

Trichromacy



Original Color
4290091164

Protanomaly
4289305759

Deuteranomaly
4289894812

Tritanomaly
4290156448

Monochromacy



Original Color
4290091164

Achromatopsia
4288782753

Achromatomaly
4289240735

CSS Examples

Text

The CSS property to change the color of the text to Android 4290091164 is called "color". The color property can be set on classes, ids or directly on the HTML element.

This example shows how text in the color `rgb(181, 152, 156)` looks like.

```
.text, #text, p{  
    color:rgb(181, 152, 156)  
}
```

If you want to add a text shadow in that color use the text-shadow property, you can generate a text shadow directly with our [CSS Text Shadow Generator](#).

Here you see how black text with a 4 pixel rgb(181, 152, 156) colored shadow looks like.

```
.shadow{ text-shadow: 4px 4px 2px rgb(181, 152, 156) }
```

Border

The CSS property to change the border of an element to Android 4290091164 is called "border". The border property can be set on classes, ids or directly on the HTML element.

This example shows the color as border, it can be applied via the CSS property "border" or "border-color".

```
.border, #border, table{ border:4px solid rgb(181, 152, 156) }
```

If only the border color should be changed use the property `border-color`.

```
.border{ border-color:rgb(181, 152, 156) }
```

If you want to add a box shadow in that color use:

Here you see how a box with a 4 pixel `rgb(181, 152, 156)` colored shadow looks like.

```
.boxshadow{ -moz-box-shadow:4px 4px 4px  
4px rgb(181, 152, 156); -webkit-box-  
shadow:4px 4px 4px 4px rgb(181, 152, 156);  
box-shadow:4px 4px 4px 4px rgb(181, 152,  
156) }
```

Background

The CSS property to change the background color of an element to Android 4290091164 is called "background". The background property can be set on classes, ids or directly on the HTML element.

```
.background, #background, body{  
background: rgb(181, 152, 156) }
```

If only the background color should be changed can be used:

```
.background{ background-color: rgb(181,  
152, 156) }
```

This example shows the color as background, it is applied via the CSS property "background".

To optimize and compress your CSS code, you can use our [online CSS compressor and optimizer](#) based on csstidy. If you want to create a linear or radial gradient as background or border, check our [CSS Gradient Generator](#).

Hey! You found this booklet interesting? Support Converting Colors with the new Membership Option!

The pro membership hides all ads, plus gives you double the colors in the color bucket, and more awesome pro features!

[Learn more, Memberships starting at \\$2.50/m!](#)

**Follow me
on Twitter!**

@ConvertingColor